

COMMUNITY HEALTH NEEDS ASSESSMENT (CHA) & NAPA OLDER ADULT ASSESSMENT (NOAA)

Board of Supervisors - April 23, 2024

Jennifer Yasumoto
Director
Health & Human
Services Agency

Christine Wu, MD MPH
Deputy Director of
HHSA – Public Health
Public Health Officer

Dana Codron, RN MPH
Sr Director Community
Health Investment
Providence

B.J. Bischoff
Project Manager
Bischoff
Consulting

Celine Regalia
Executive Director
Providence Adult Day
Health



NAPA COUNTY
Health & Human
Services Agency




OVERVIEW




- **Community Health Needs Assessment (CHA)**
 - Purpose and Process
 - Community Health Themes
- Napa Older Adult Assessment (NOAA)
- Community Health Improvement Plan (CHIP) & Our Operational Strategy for Collective Impact

2023

COMMUNITY HEALTH NEEDS ASSESSMENT

Napa County, California



A Tradition of Stewardship
A Commitment to Service

NAPA COUNTY
Health & Human
Services Agency

To provide feedback on this CHNA or obtain a printed copy free of charge, please email Jennifer Henn, PhD, at jennifer.henn@countyofnapa.org or Teresa Smith at Teresa.Smith@Providence.org.

NAPA COUNTY CHNA—2023



NAPA COUNTY
Health & Human
Services Agency



PURPOSE AND PROCESS

- A CHA or CHNA is a comprehensive assessment that establishes the foundation for sustainable health improvements for Napa County
 - Performed every 3-5 years (includes both quantitative and qualitative data)
 - Focuses both on traditional measures of health (e.g., rates of disease) and on the **Social Determinants or Drivers of Health (SDoH)**
 - SDoH are the non-medical factors that influence health (such as the conditions of the places where people live, learn, work, and play that affect a wide range of health outcomes)
 - Establishes priority areas for community health improvement
- Link to CHA: [2023 Napa County Community Health Assessment](#)



2023 CHA/CHNA JOINT PROCESS

Napa County HHSA and Providence QVMC partnered to produce a joint health assessment in 2023

- A Human-Centered Design process was utilized to understand the personal, lived experiences of community members.
- Engagement focused on communities whose voices are often underrepresented or unheard in public discourse and with community leaders working in both paid and unpaid capacities.
- Listening sessions and key informant interviews included 137 individuals from across Napa County: American Canyon, Calistoga, Napa, St. Helena, and Yountville



Projective exercises and interactive activities were used to help participants delve deeper



NAPA COUNTY
Health & Human
Services Agency



COMMUNITY HEALTH THEMES



FOUNDATIONS



RACIAL EQUITY
& LGBTQ INCLUSION



HOUSING



BEHAVIORAL
HEALTH



ECONOMIC
STABILITY



FOOD
ACCESS



ACCESS TO
HEALTH SERVICES

BARRIERS



CHILDCARE



LANGUAGE
ACCESS



TRANSPORTATION



EDUCATION /
DIGITAL INCLUSION



NAPA COUNTY
Health & Human
Services Agency



5 NEEDS IDENTIFIED

In selecting priority areas for focus, community partners were asked to consider the magnitude of the problem, the ability to have an impact, and alignment with existing priorities, including an equity lens.

Housing
Behavioral Health
Access to Health Services
Racial Equity & LGBTQ Inclusion
Economic Stability



HOUSING



BEHAVIORAL
HEALTH



ACCESS TO
HEALTH SERVICES



RACIAL EQUITY
& LGBTQ INCLUSION

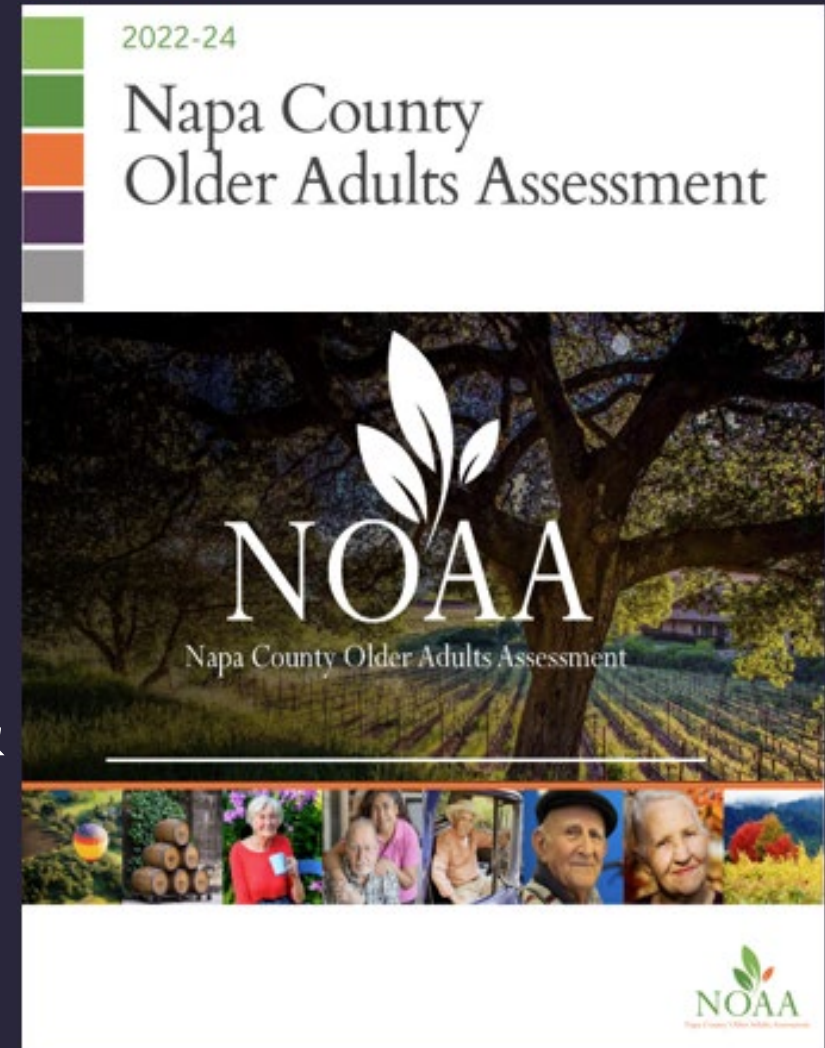


ECONOMIC
STABILITY



OVERVIEW

- Community Health Needs Assessment (CHA)
 - Purpose and Process
 - Community Health Themes
- Napa Older Adult Assessment (NOAA)
- Community Health Improvement Plan (CHIP) & Our Operational Strategy for Collective Impact



NAPA COUNTY
Health & Human
Services Agency



NAPA COUNTY OLDER ADULTS ASSESSMENT

Methodology

1530
surveys

21
interviews

76
focus group
participants

Between March and October 2023, the NOAA project management team, advised by the NOAA Steering Committee, collected data to inform the Needs Assessment by conducting an online and in-person non-scientific survey, focus groups, and Key Informant Interviews (KII) to obtain the opinions of older adults (60 and up) who live in or serve as a caregiver in Napa County.



NAPA COUNTY
Health & Human
Services Agency





OUR OLDER ADULT COMMUNITY

- Older adults make up **28%** of Napa County and are the most rapidly growing population.
- Over **68%** of NOAA participants have lived in Napa County more than 20 years.

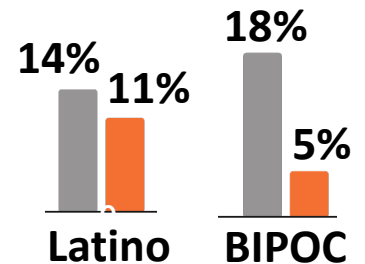
Participants represent all Napa County communities



75% 78%



Participants proportionally represent Napa County's **White and Latino/a/e** communities.



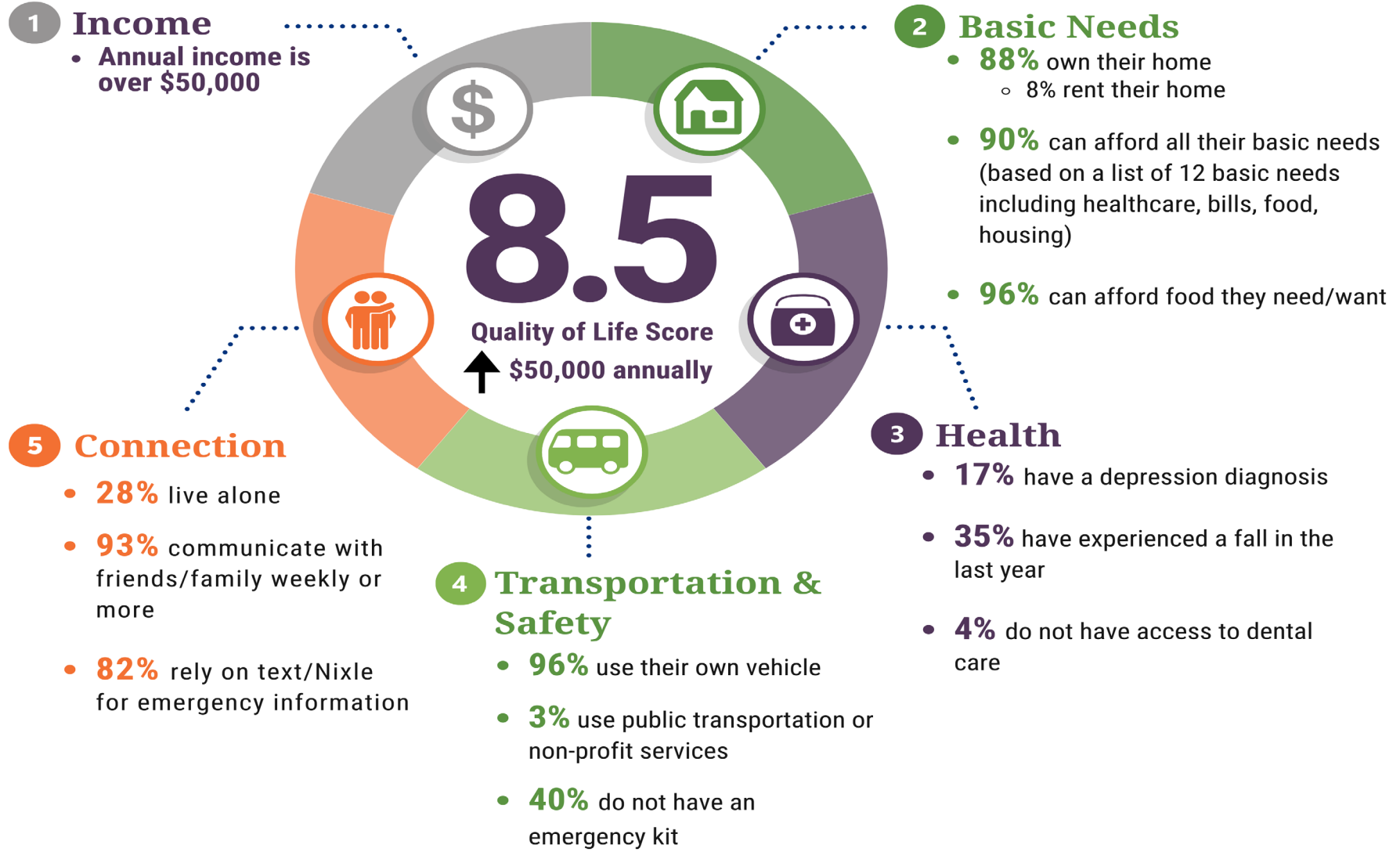
● Census
● Survey





Demographics

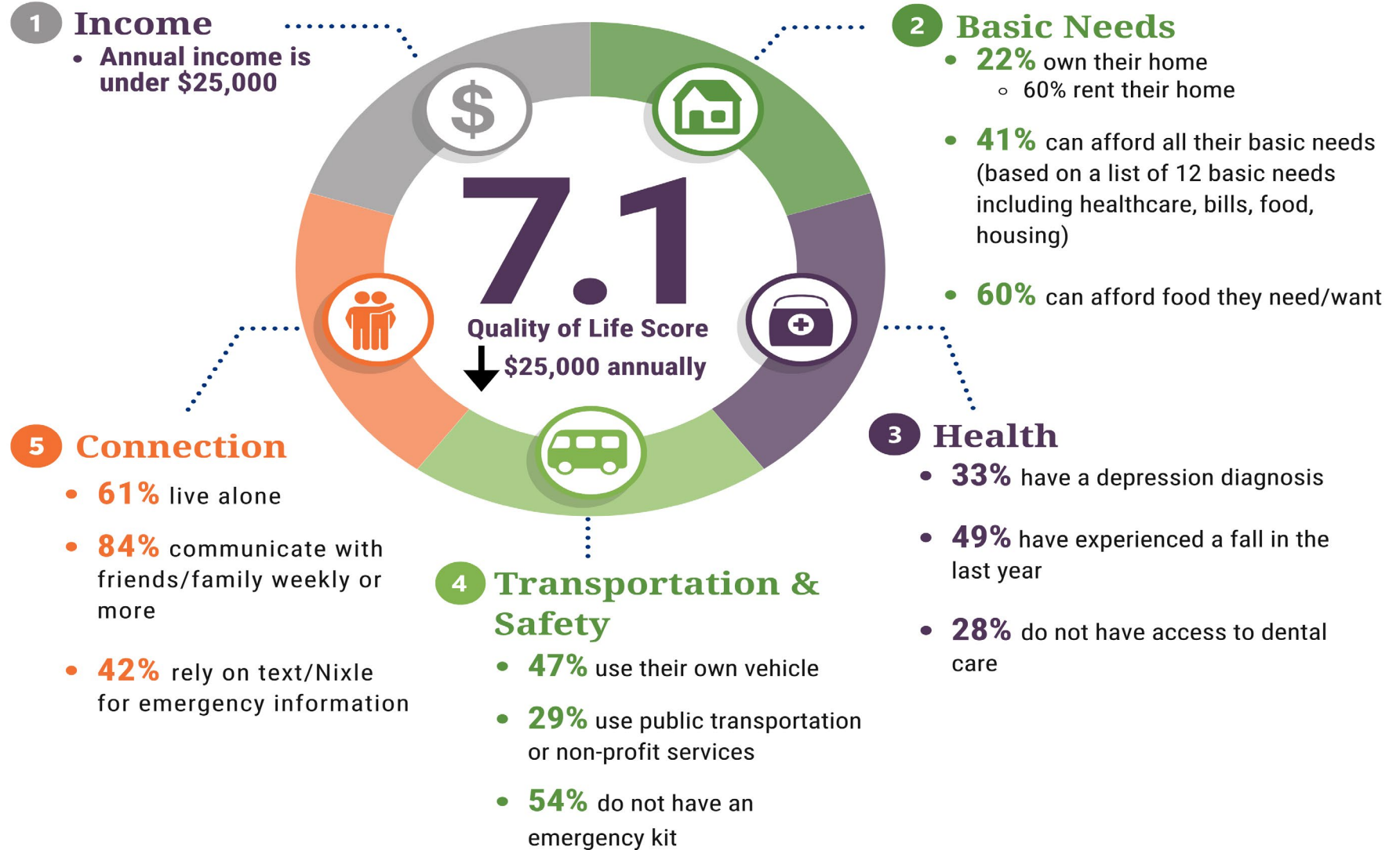
- 88% of respondents with an annual income over \$50K are **White**
- 66% of all **White** respondents have an annual income of \$50K or more





Demographics

- 34% of respondents with an annual income under \$25K are Latino/a/e
- 66% of all Latino/a/e respondents have an annual income under \$25K



OVERVIEW

- Community Health Needs Assessment (CHA)
 - Purpose and Process
 - Community Health Themes
- Napa Older Adult Assessment (NOAA)
- Community Health Improvement Plan (CHIP) & Our Operational Strategy for Collective Impact

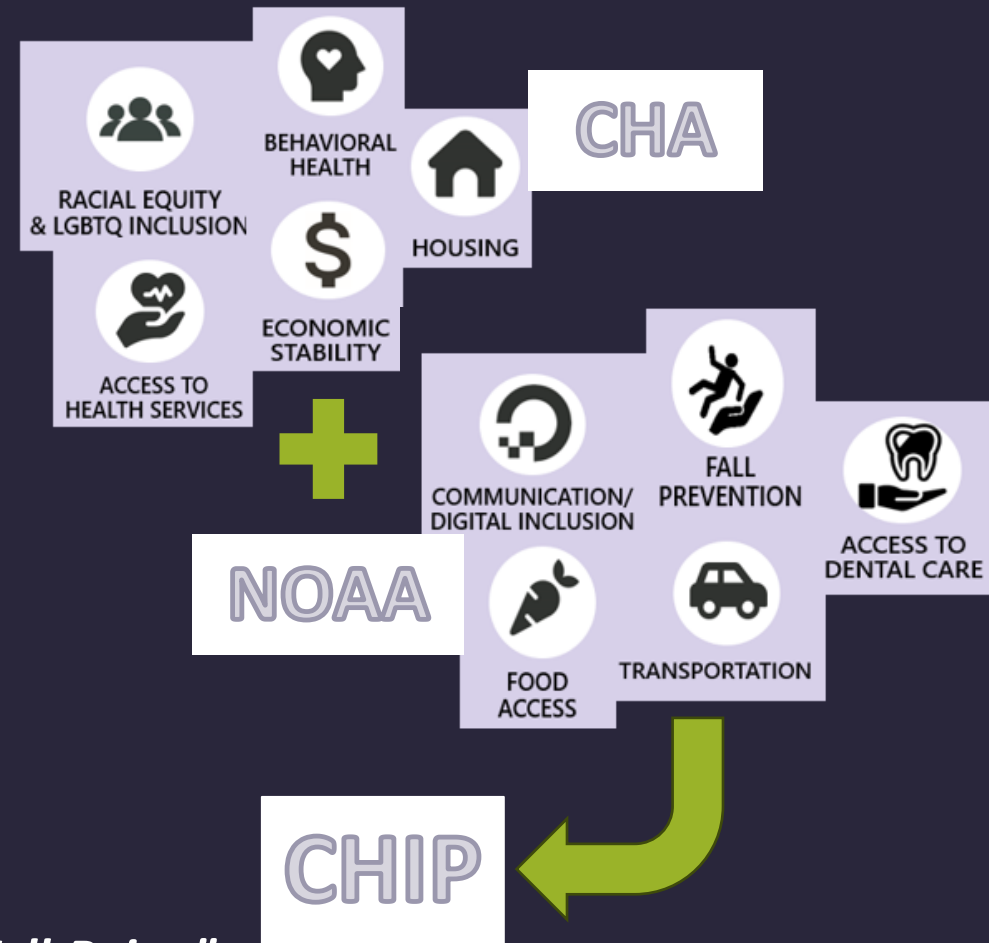


NAPA COUNTY
Health & Human
Services Agency



COMMUNITY HEALTH IMPROVEMENT PLAN (CHIP)

Priority areas identified through the CHA – and the NOAA – drive the Goals, Objectives, and Strategies that form our CHIP → Our roadmap to coordinating resources and targeting efforts for *“Collective Impact to enhance Community Health and Well-Being”*



HHS's Mission:

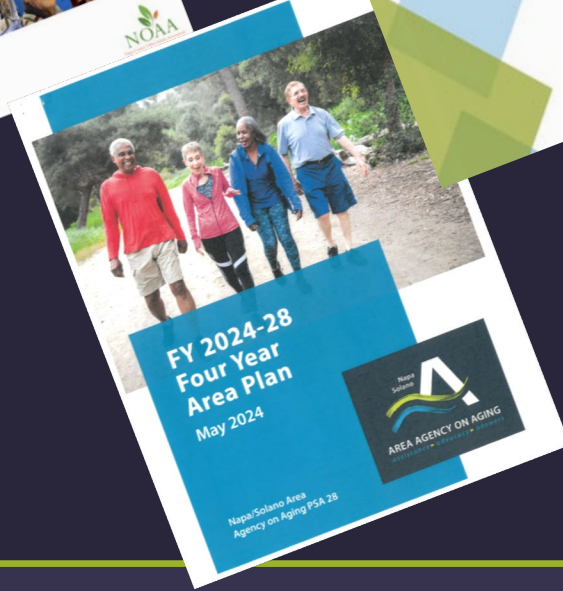
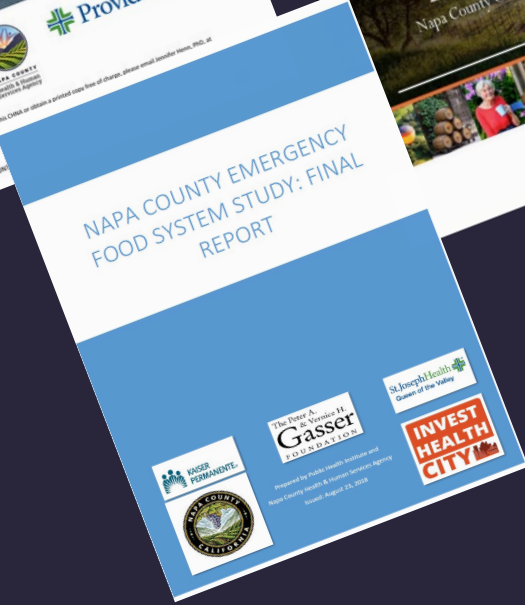
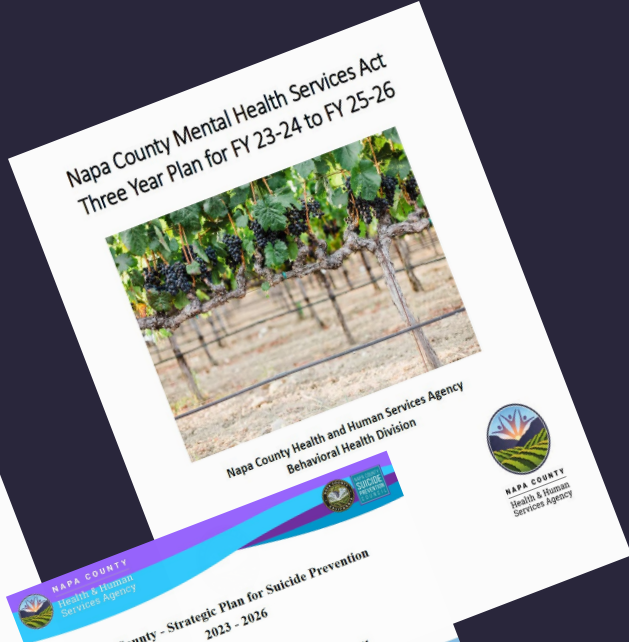
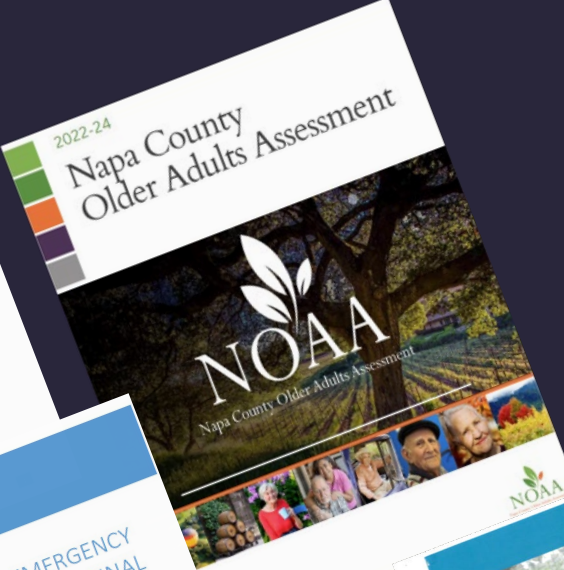
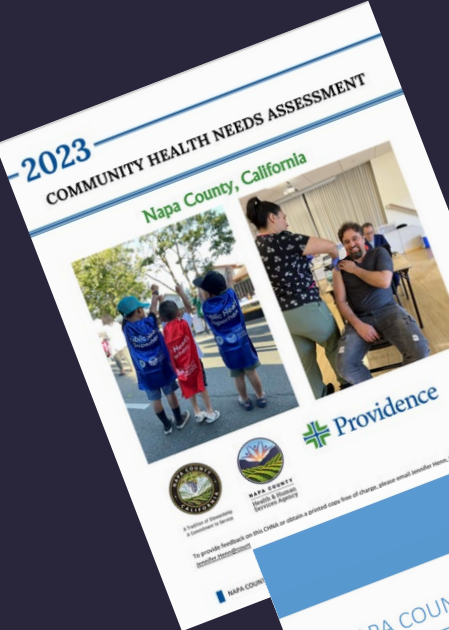
“To Serve our Community & Support its Health and Well-Being”



NAPA COUNTY
Health & Human
Services Agency



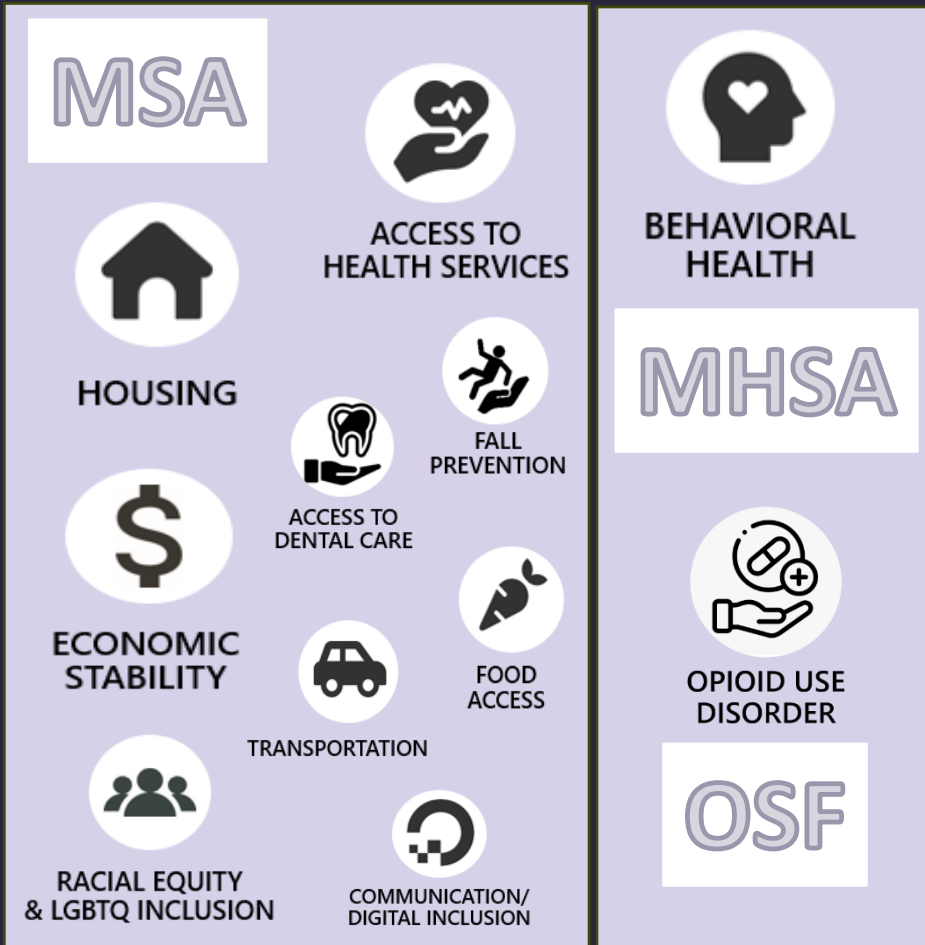
COLLECTIVE IMPACT: ALIGN PRIORITIES



NAPA COUNTY
Health & Human
Services Agency



COLLECTIVE IMPACT: ALIGN PRIORITIES + LEVERAGE FUNDING



- Master Settlement Agreement (**MSA**) Grant Award → targets needs identified in CHA/NOAA Priority Areas: 1) Access to Health Services; 2) Housing; 3) Economic Stability; and 4) Racial Equity & LGBTQ Inclusion
- Mental Health Services Act (**MHSA**) RFP → targets Behavioral Health Priority Area (Mental Health) identified in CHA/NOAA; aligns with MHSA 3-Year Plan
- Opioid Settlement Funds (**OSF**) RFP → targets Behavioral Health Priority Area (Opioid Disorders) identified in CHA; aligns with Napa Opioid Safety Coalition (NOSC) Strategic Plan
- Funded Programs/Services = **CHIP Strategies**



OUR STRATEGIC PLAN IN ACTION: “COLLECTIVE IMPACT TO ENHANCE COMMUNITY HEALTH AND WELL-BEING”



GOAL 3

Collaborate with Community Partners to Maximize our Reach and Collective Impact to Enhance Community Health and Well-Being

- **Objective 1:** Align and leverage community assessments and action plans in conjunction with community partners and internally across HHSAs's divisions.
- **Objective 2:** Leverage funding to create opportunities for coordinated care in alignment with community assessments that aim to address service gaps.
- **Objective 3:** Enhance bi-directional communication, information sharing, and coordination of service delivery, both internally and externally.
- **Objective 4:** Maximize partnerships with population and service-based advisory boards, councils, and coalitions.



THANK YOU



NAPA COUNTY
Health & Human
Services Agency

