

# CREATING A WILDFIRE RESILIENT FUTURE



SHARING THE RESPONSIBILITY

Community + Cities + County

[www.napafirewise.org](http://www.napafirewise.org)

# MAJOR MILESTONES AND PROGRESS

- 2017- NCCFF launches Countywide Community Wildfire Protection Plan (CWPP) initiative
- 2020 – Countywide CWPP is completed - Board of Supervisors adopts the CWPP with a commitment to fund initial 5-year priority roadside fuel reduction plan
- 2021 – Napa Firewise Defines the complete project portfolio of fuel reduction, Defensible Space assistance, outreach and education.
- Napa Firewise Launches Napa County Wildfire Resilience Action Program to deliver the complete Countywide CWPP over 10/+ years
- Highlights of NCCFF and Napa County accomplishments to date:
  - Projects completed - 58
  - Homes Evaluated and or with improved Defensible Space – Approx 500
  - Miles of roads completed – 75 and 120 additional miles funded
  - Acres of fuel reduction – 796 and 2566 additional funded
  - FSC Community organizations active 21 including 5 with NFPA Firewise and 9 planned
- Napa Firewise has been a funding “force multiplier”

# Efficient Execution

Hazardous Fuels Reduction  
Defensible Space  
Ignition Resistant Construction

## Total Portfolio

- Identified Priorities 384+/-
- Ranked Based on Fire Science and Values at Risk
- Aligned to Likely Funding Sources

## Projects Completed '21/22

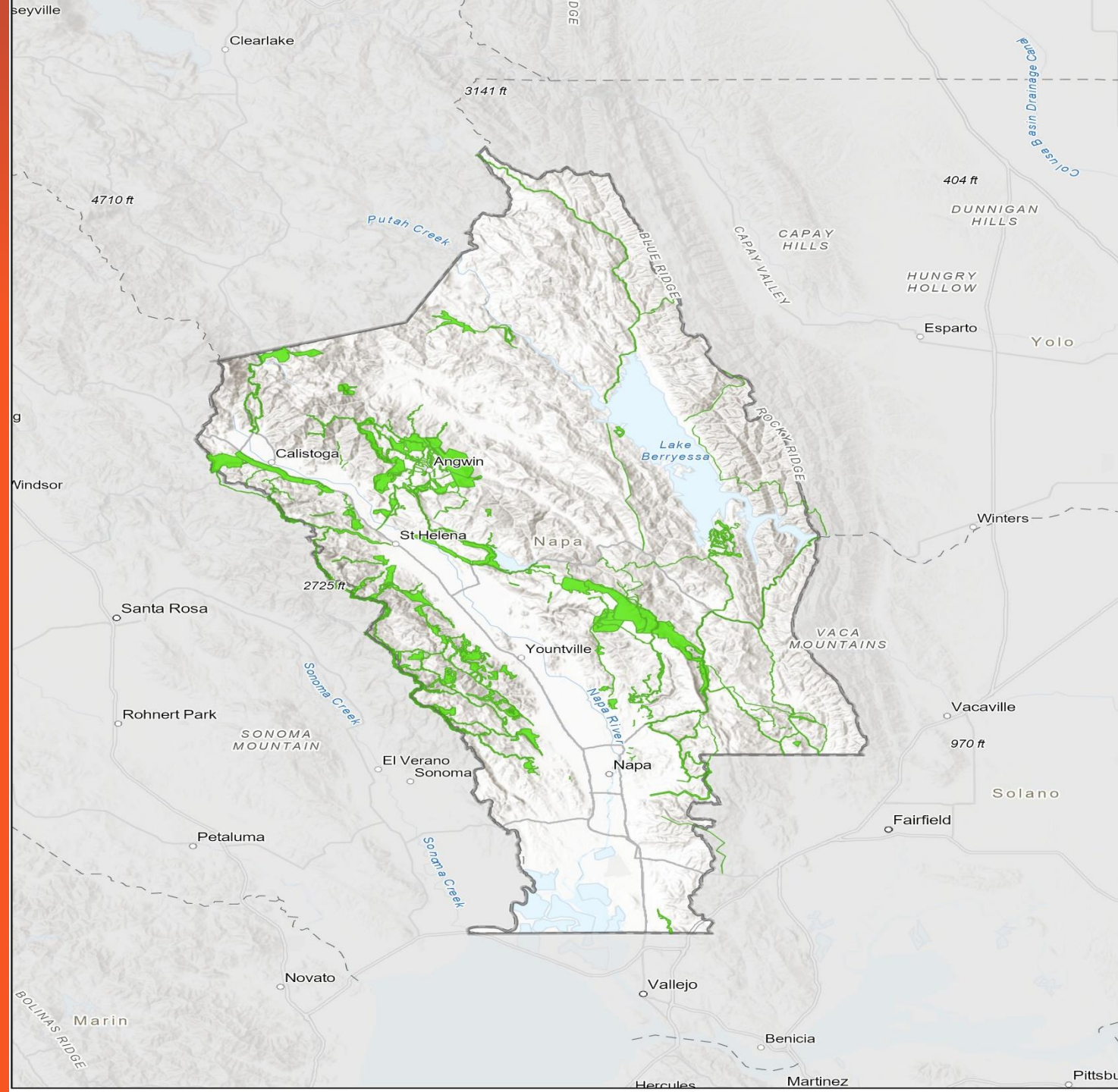
- Priority Access Roads for Evacuation and Response
- Key Ridge Lines and Community perimeters for Containment
- Defensible Space Direct and Cost Share

## Funded Projects Currently Underway

- Dozer Trails
- Large Landscape Level Projects
- Forest Health
- Ridgeline Containment
- Private Access Roads
- Defensible Space Cost Share
- 1000 Reflective Address Signs

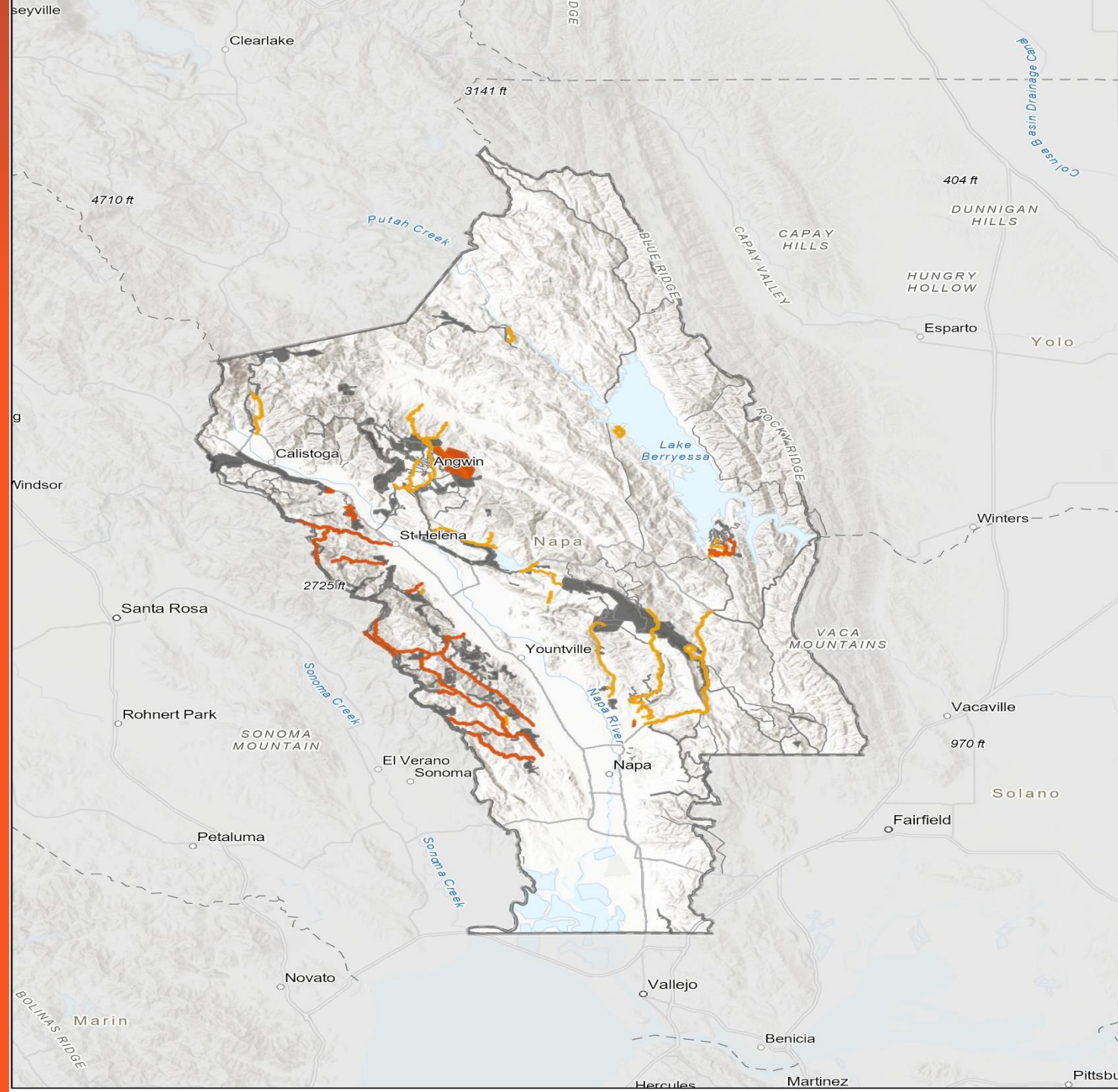
# NCFF CWPP ALL PROJECTS

- 384+/- Projects
- All Priorities
- 10-year/+ Implementation
- Large Landscape
- Evacuation Routes
- Critical Infrastructure
- Community Perimeter Fire Breaks
- Shift to Maintenance
- Total Cost and Responsibility TBD



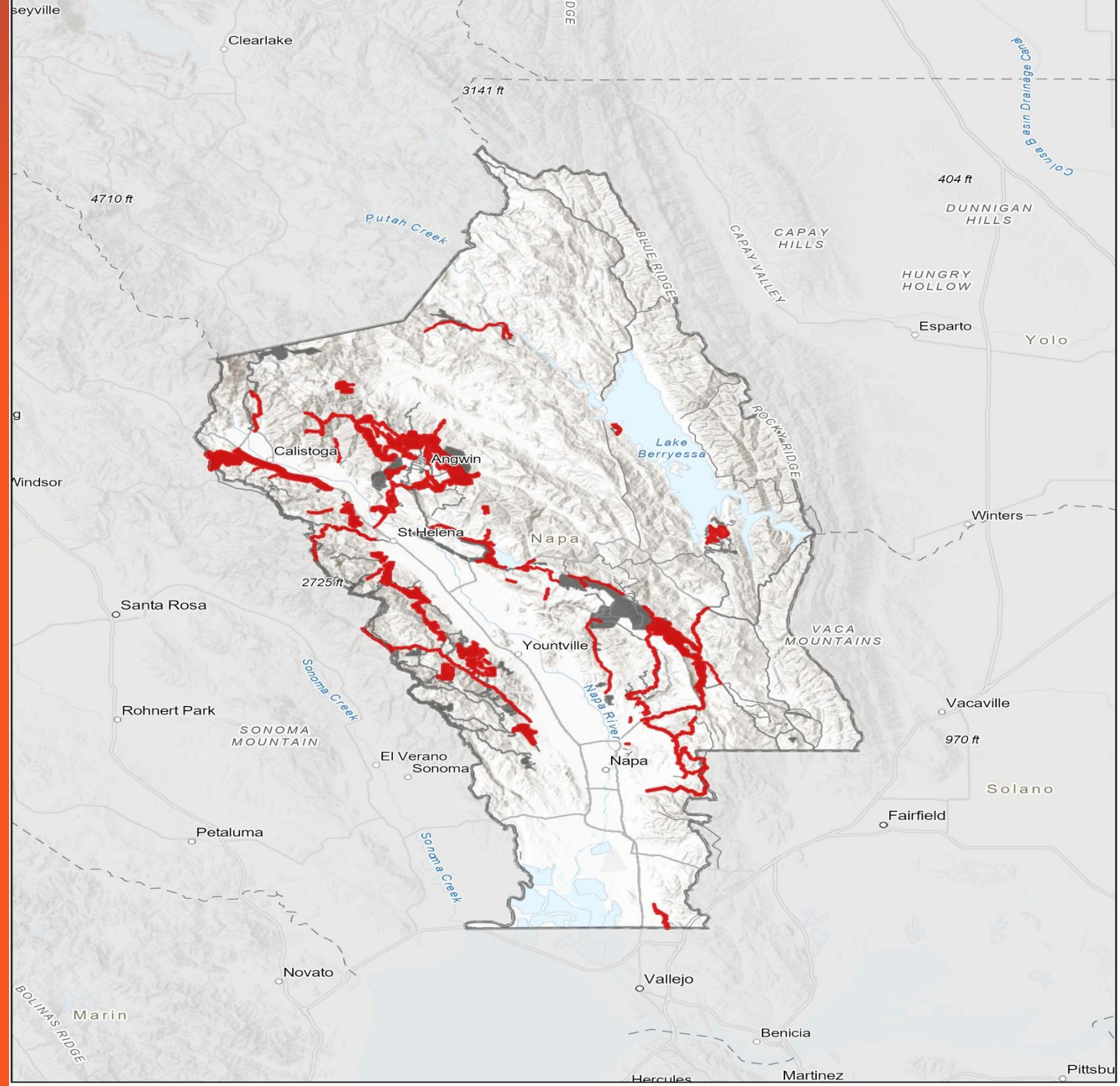
# NCFF CWPP 2021-23 (PRESENT) PROJECTS

- Successfully Implemented 58 Projects
- Critical access and egress routes and community fuel breaks
- 796 Acres of fuel reduction
- 75 Miles of Fuel Treatments



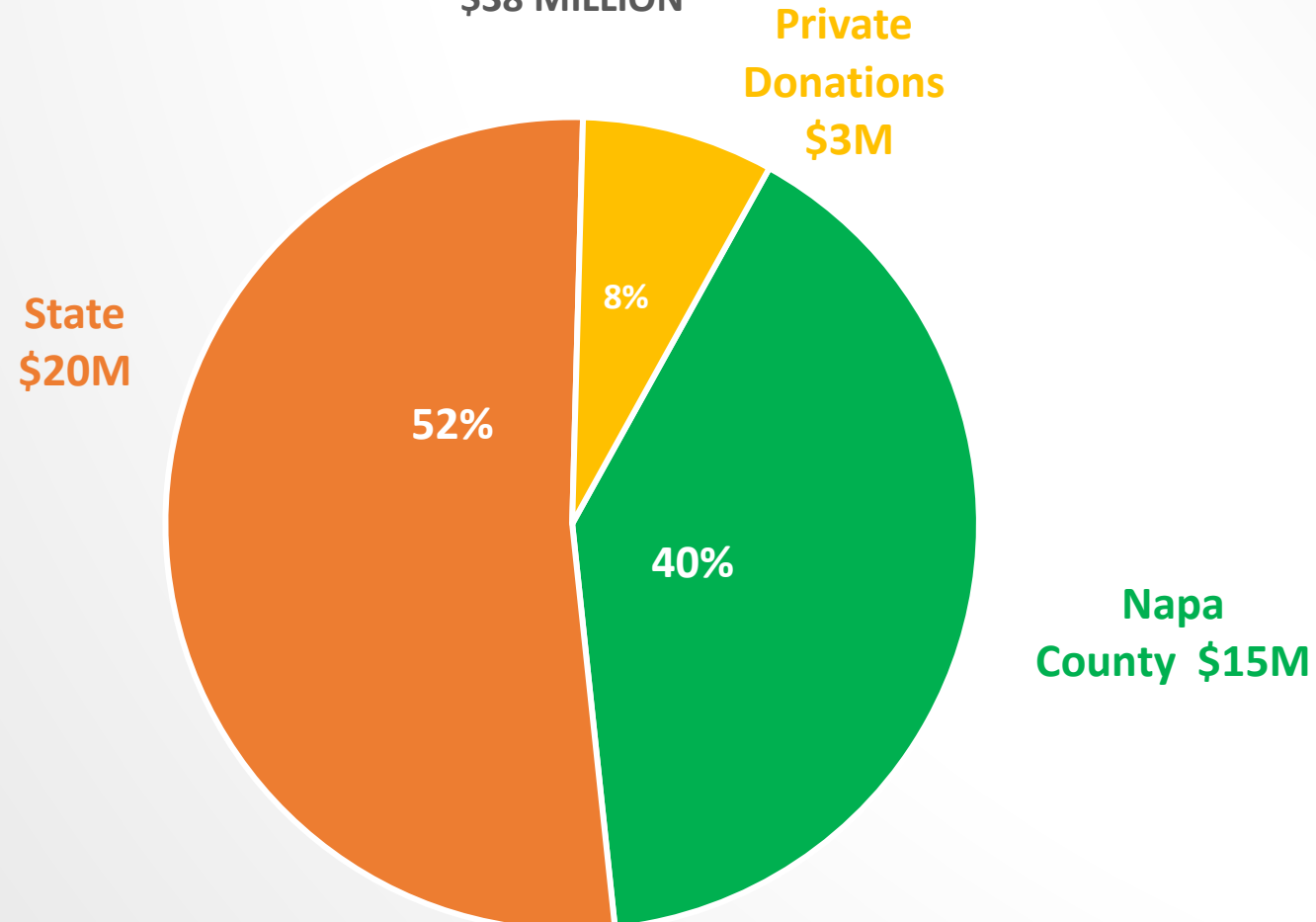
# NCFF CWPP 2023-25 AWARDED AND PENDING PROJECTS

- Critical water infrastructure
- Major access and egress corridors in every district
- Critical Ridgetop fire breaks in every district
- 175/+ Miles of Roads and Dozer Trails
- Two Forest Health Resiliency Projects at 800/+Acres each protecting Angwin/PUC and the Vets Home/Enchanted Hills



# FUNDS AWARDED BY SOURCE

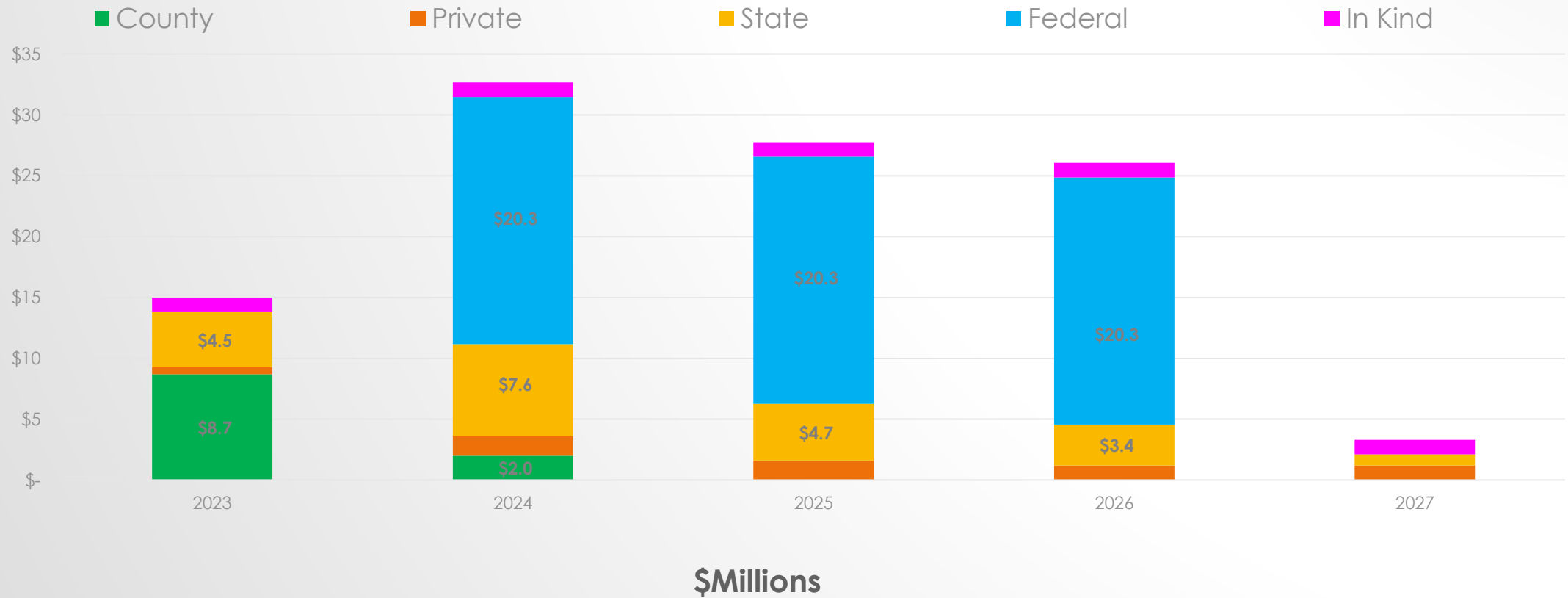
GRANTS AWARDED  
\$38 MILLION




2020 - 2023 April

# FUNDING HORIZON

GRANTS TO DEPLOY  
\$112 AWARDED & PENDING







**IMPLEMENTATION  
NAPA COUNTY  
WILDFIRE RESILIENCE ACTION PROGRAM  
(NCWRAP)**

---

# BIG CHALLENGES REQUIRE BIG TABLES AND BIG THINKING

## Approach

- Large, complex and expensive challenge that will require diverse coalitions with close partnership and coordination.
- Funding will involve individual residents, community action, industry (vintner/hospitality), grant sources and county funds
- Rigorous measurement of progress and effectiveness

## Benefits and outcomes

- Continued reinvigoration of tourism and hospitality industry
- Continued growth and resilience of wine industry
- Continued improvement of the insurance and carrier coverage markets
- More resilient and fire adapted Napa County

# NAPA FIREWISE STRATEGIC RESILIENCE SERVICES PLATFORM

Building a Strong Partnerships with Napa County, Napa County Fire, CAL FIRE, PG&E and Fire Safe Councils

## **Pillar 1 Adaptation Outreach and Education**

- Landowner and Resident Engagement
- Landowner Release and Permission
- Community Evaluations
- Fire Risk Assessments
- Community Wildfire Protection Plans
- 21 Fire Safe Councils
- NFPA Firewise Certification

## **Pillar 2 Defensible Space and Ignition Resistant Construction**

- Landowner and Resident Engagement
- Home Evaluations and Assessments
- Prescription Roadmaps
- Cost Share for Defensible Space
- Cost Share for Home Hardening
- Reflective Address Signs

## **Pillar 3 Hazardous Fuels Reduction Project Portfolio**

- Project Identification
- Project Prioritization
- Landowner and Resident Engagement
- Environmental Compliance
- Vendor Selection
- Project Implementation
- Project Maintenance

# NEW PROJECTS FUNDED NC '23 BUDGET REQUEST

VEGETATION MANAGEMENT PROJECTS		\$ 7,430,000	
	NEW PROJECTS		\$ 3,925,000
	American Canyon Eastern Fuel Break		\$ 200,000
	Friesen Drive to Lookout Point Roadside		\$ 100,000
	College Avenue Roadside Expanded		\$ 100,000
	White Cottage Roadside		\$ 200,000
	Petrified Forest Roadside Expanded		\$ 300,000
	Glass Mountain Roadside Expanded		\$ 60,000
	Kortum Canyon Road Expanded		\$ 200,000
	Diamond Mt Roadside Upper Expanded Pachateau & South Fork Diamond		\$ 300,000
	Hospital Defensible Space and Evacuation		\$ 300,000
	Hospital WUI		\$ 500,000
	Hospital Water Supply Protection Roadside Expanded Fuel Break		\$ 200,000
	Crystal Springs Roadside		\$ 140,000
	Lake Hennessey Water Treatment Plant Protection		\$ 400,000
	Partrick Roadside Expanded		\$ 275,000
	Atlas Peak to Circle Oaks		\$ 350,000
	Steele Canyon Roadside Expanded		\$ 300,000

# MAINTENANCE PROJECTS NC '23 BUDGET REQUEST

MAINTENANCE PROJECTS			\$ 3,505,000
	Ink Grade Roadside Expanded		\$ 500,000
	Rancho LaJota and Linda Falls - Mastication		\$ 50,000
	Napa Open Space Berryessa Estates Maintenance		\$ 300,000
	Berryessa Highlands Fuel Breaks Maintenance		\$ 300,000
	Berryessa Pines Subdivision Fuel Break Maintenance		\$ 150,000
	Circle Oaks Perimeter Fuel Break		\$ 350,000
	Continuum to Land Trust to Atlas Peak Dozer 2023		\$ 25,000
	Continuum to Oakville Ranch Dozer 2023		\$ 30,000
	HWY 121 Monticello Roadside Expanded (Vichy to Circle Oaks)		\$ 700,000
	Soda Canyon Roadside Expanded		\$ 400,000
	Spring Mt. Road Expanded		\$ 300,000
	Langtry Road		\$ 100,000
	Bale Mill Entrance Roadside - Bothe State Park		\$ 50,000
	Bothe Tucker Acres		\$ 100,000
	Silverado Community Fuel Break Maintenance		\$ 150,000

# NAPA FIREWISE AND NAPA COUNTY ENGAGED AND DEFINED RELATIONSHIP

## Napa Firewise

- Community Engagement to maintain vigilance and access
- Emphasis on deliberate and transparent action
- Commitment to continued multi-source funding
- True partnership and understanding that Napa County faces many competing priorities related to the costs of climate resilience

## Napa County Fire Administrator

- Welcome sustained County engagement and relationship with Firewise
- Aligned expectations about size of the challenge and the approach to solve it
- Continued partnership in the pursuit of Federal Funds from FEMA and Congressionally Directed Spending



**THANK YOU**

---