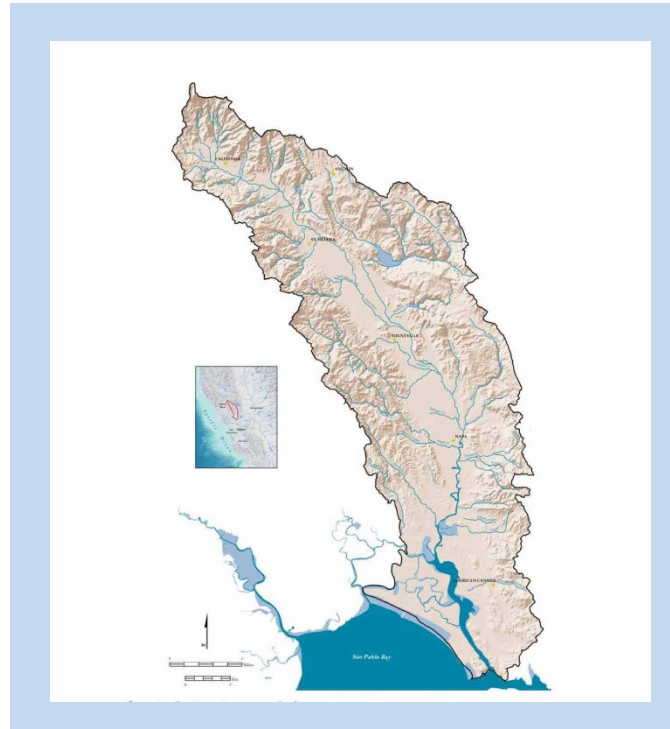


# Watershed & Stream Maintenance Programs Joint Zone Project 96-1

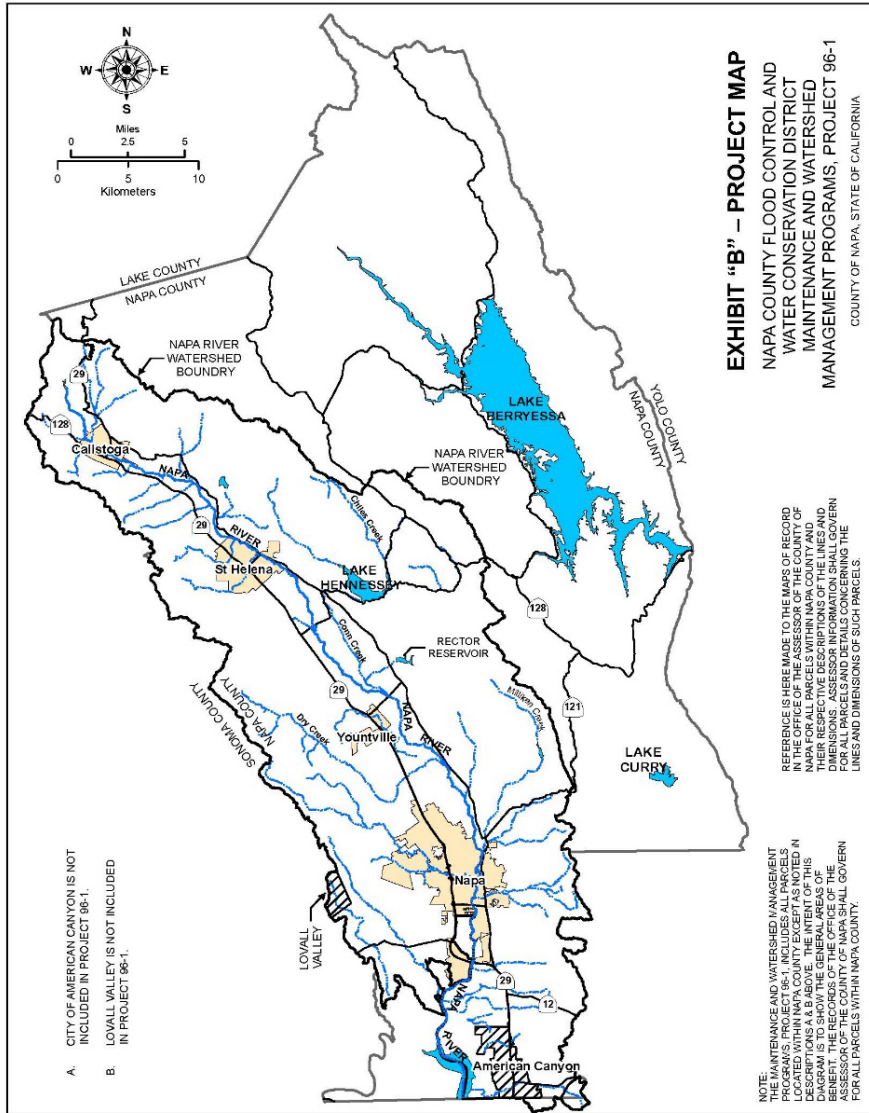


## Napa County Flood Control & Water Conservation District



A Tradition of Stewardship  
A Commitment to Service

# Watershed Maintenance Funding



## District Benefit Zones

- Napa River Watershed - \$1,223,700
- District Wide - \$358,057
- City of American Canyon *Not included*

## Other Funding

- Rutherford Assessment District - \$98,160
- OVOK Community Facilities District - \$111,995
- Grants – special projects

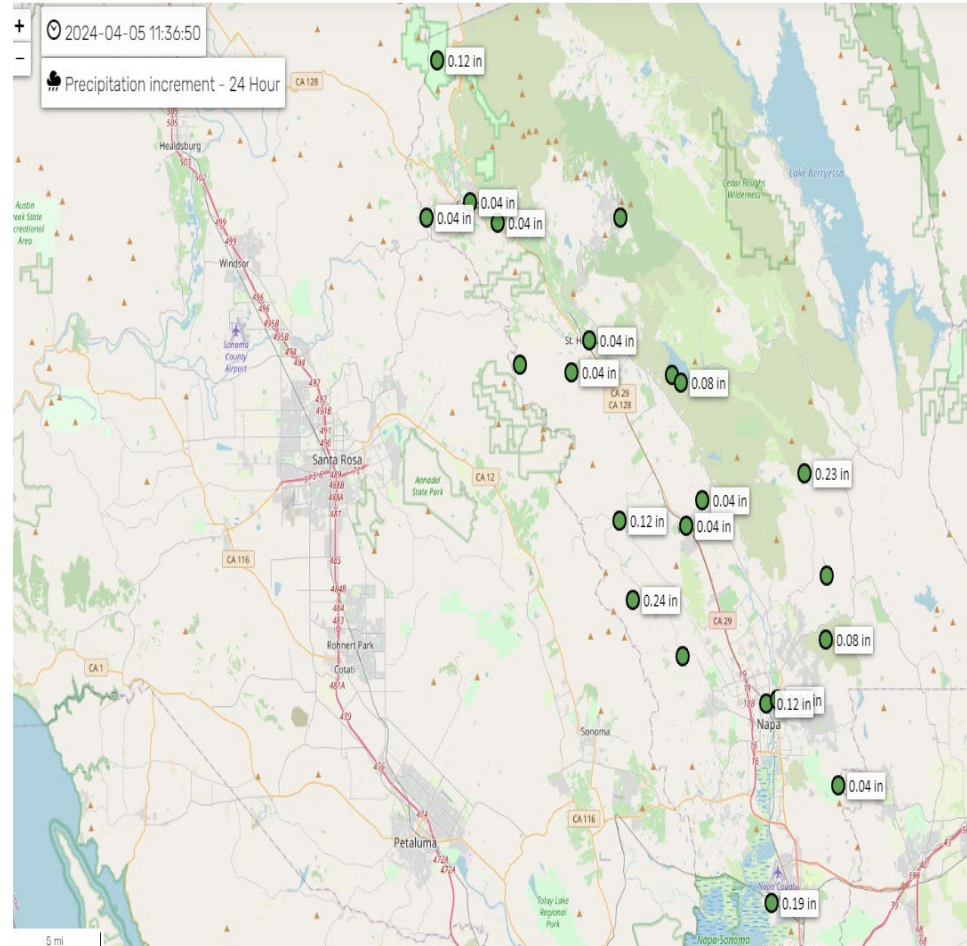
# Countywide Stream and Rainfall Monitoring (ALERT System)



Home Map Sites Bookmarks

2024-04-05 11:36:50

Precipitation increment - 24 Hour



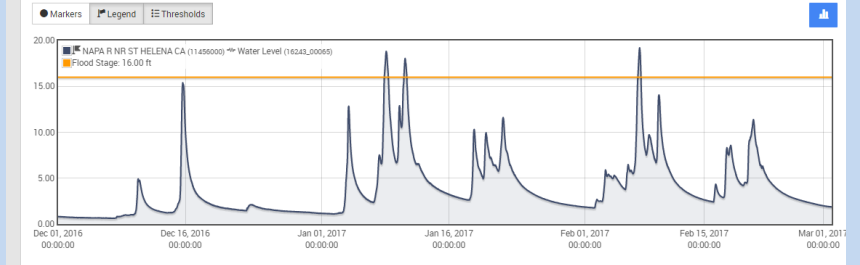
[napa.onerain.com](http://napa.onerain.com)

## Water Level (16243\_00065)

NAPA R NR ST HELENA CA (11456000)

December 1, 2016 - March 1, 2017

2.18 ft 26 minutes ago



### Notes

These data are reproduced from [waterdata.usgs.gov](http://waterdata.usgs.gov) for convenience and real-time use. This is a record of raw data, it does not include quality control or corrections made subsequently by USGS. For maintained and accurate historical stage and discharge datasets for this station, visit the USGS NWIS webpage: [http://waterdata.usgs.gov/ca/nwis/uv/?site\\_no=11456000&agency\\_cd=USGS](http://waterdata.usgs.gov/ca/nwis/uv/?site_no=11456000&agency_cd=USGS)

### Thresholds

Flood Stage

16.00 ft

Site	Group	Last Report	Current Level	Monitor Stage	Flood Stage	Record High
Browns Valley Creek at McCormick Ln	All	about 3 hour ago	0.35	10.00	12.00	10.06
Dry Creek at Hwy 20	All	17 minutes ago	0.61	9.00	14.00	15.00
Garnett Creek at Greenwood Ave	All	about an hour ago	1.08	7.00	9.00	9.92
Hopper Creek at Hwy 29	All	about 10 hour ago	0.32	9.00	6.00	16.62
Lake Hemsway	All	13 minutes ago	308.57	-	-	-
Milken Creek at Adas Peak Rd	All	about 3 hour ago	1.57	7.00	9.00	-
Milken Reservoir	All	8 minutes ago	891.69	910.00	924.00	-
Napa Creek at Hwy 29	All	about an hour ago	3.17	11.10	14.50	16.70
NAPA R NR NAPA CA	All	27 minutes ago	5.27	22.00	25.00	-
NAPA R NR ST HELENA CA	All	27 minutes ago	2.18	-	16.00	-
Napa River at Berry St	All	about an hour ago	2.01	-	-	-
Napa River at Dunaway Ln	All	about an hour ago	2.49	14.00	17.00	14.95
Napa River at Lincoln Ave (Napa)	All	15 minutes ago	-3.96	16.50	18.50	22.84
Napa River at Lodi Ln	All	about 5 hour ago	0.80	9.00	11.00	12.58
Napa River at Youville Cross Rd	All	15 minutes ago	2.74	18.00	20.00	25.35
Redwood Creek at Forest Dr	All	44 minutes ago	0.93	6.00	8.00	11.09
Redwood Creek at St Vaaker Rd	All	8 months ago	0.00	6.00	6.00	10.16
Salvador Channel at Big Ranch Rd	All	about an hour ago	1.17	7.50	10.00	12.76
SODA CR NR NAPA	All	42 minutes ago	0.82	-	-	-
Subhur Creek at Pope St	All	28 minutes ago	1.24	8.00	10.00	10.84
Subhur Creek at White Sulphur Springs Rd	All	about 6 hour ago	4.08	8.00	10.00	9.62
Tulayuk Creek at Shortwell Ave	All	about an hour ago	1.22	6.00	8.00	7.70
York Creek at Hwy 29	All	15 minutes ago	1.07	3.00	4.50	4.11

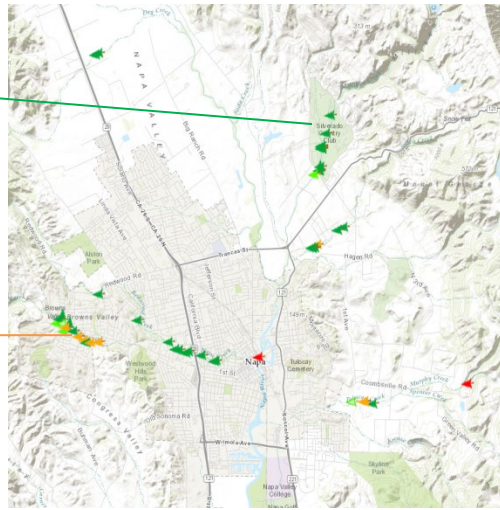
# Stream and Channel Maintenance throughout the County including collaboration with Cities of Calistoga, St. Helena, Yountville, Napa

## Activities

- Vegetation and Invasive Plant Management
- Downed Tree Management & LWD Recruitment
- Streambank Erosion/Biotechnical Stabilization
- Sediment Management
- Riparian and Stream Enhancement
- Fish Passage Barrier Removal
- Trash and Debris Removal

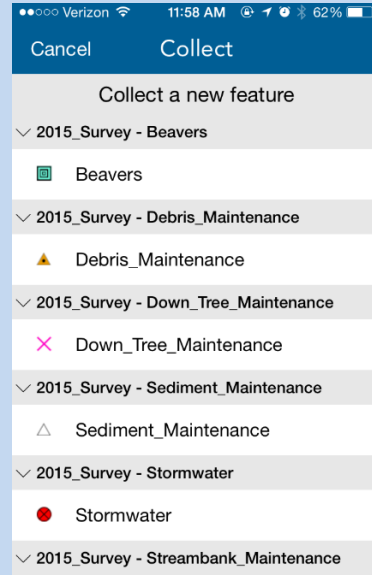
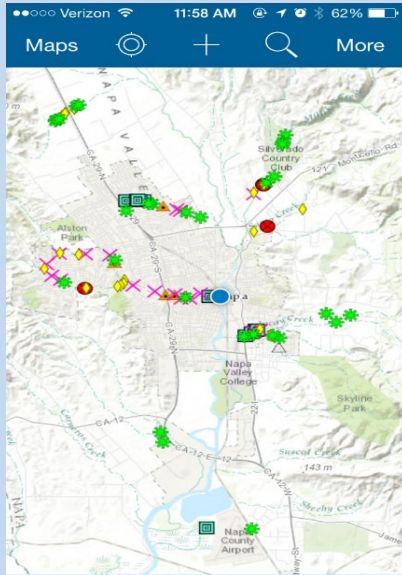


## LWD Management & Monitoring

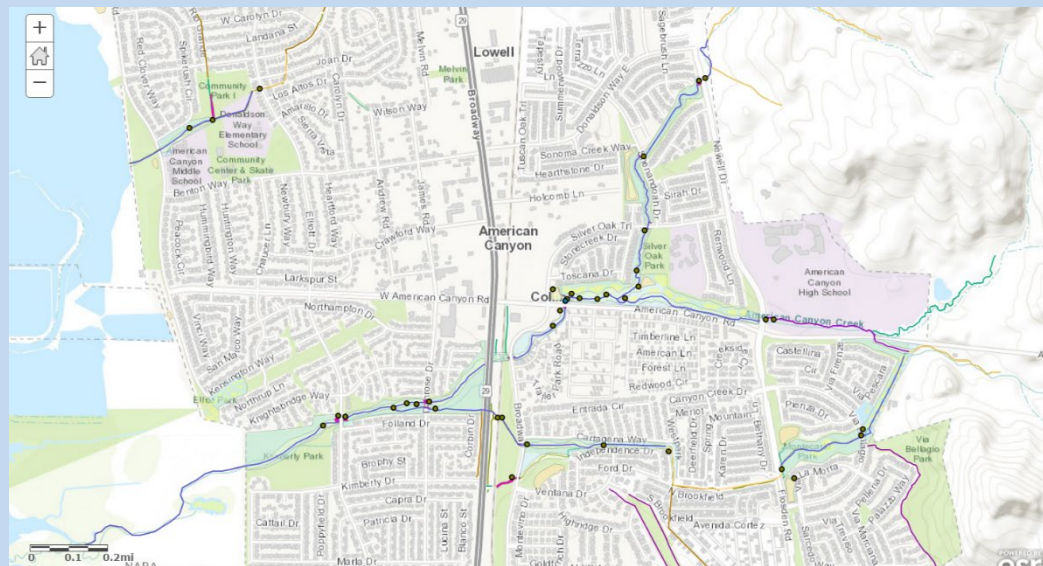


# Stream Maintenance Program (SMP)

## Annual Stream Surveys

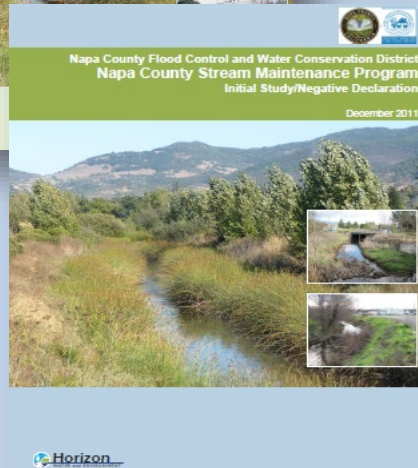


# City of American Canyon Collaborative Maintenance Program

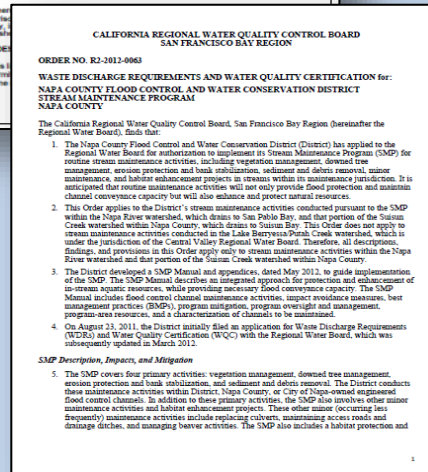
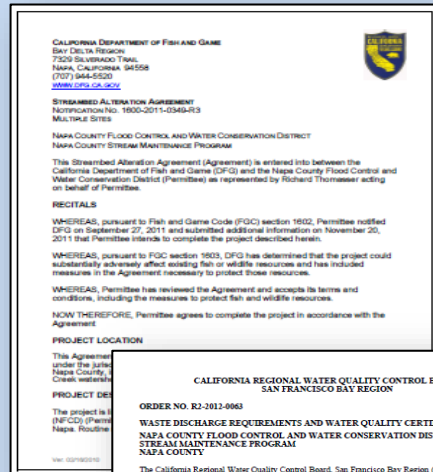


# Stream Maintenance Program Documents/Permits State and Federal Regulations

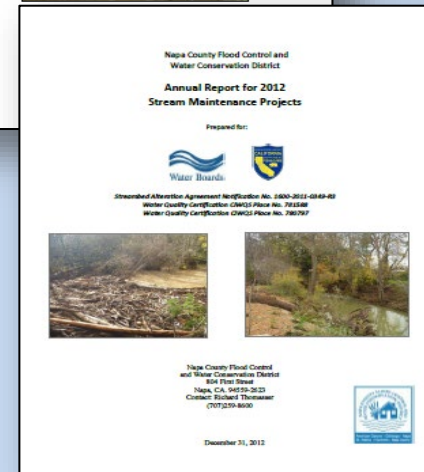
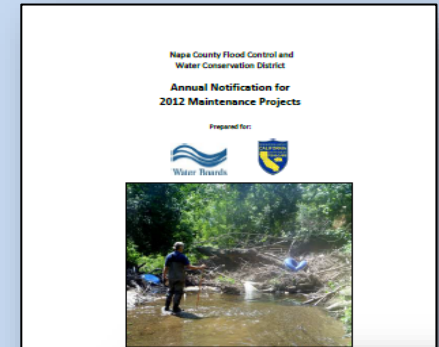
## Stream Maintenance Manual & California Environmental Quality Act (CEQA)



## Permits- CDFW, RWQCB, Corps



## Annual Notification & Reports

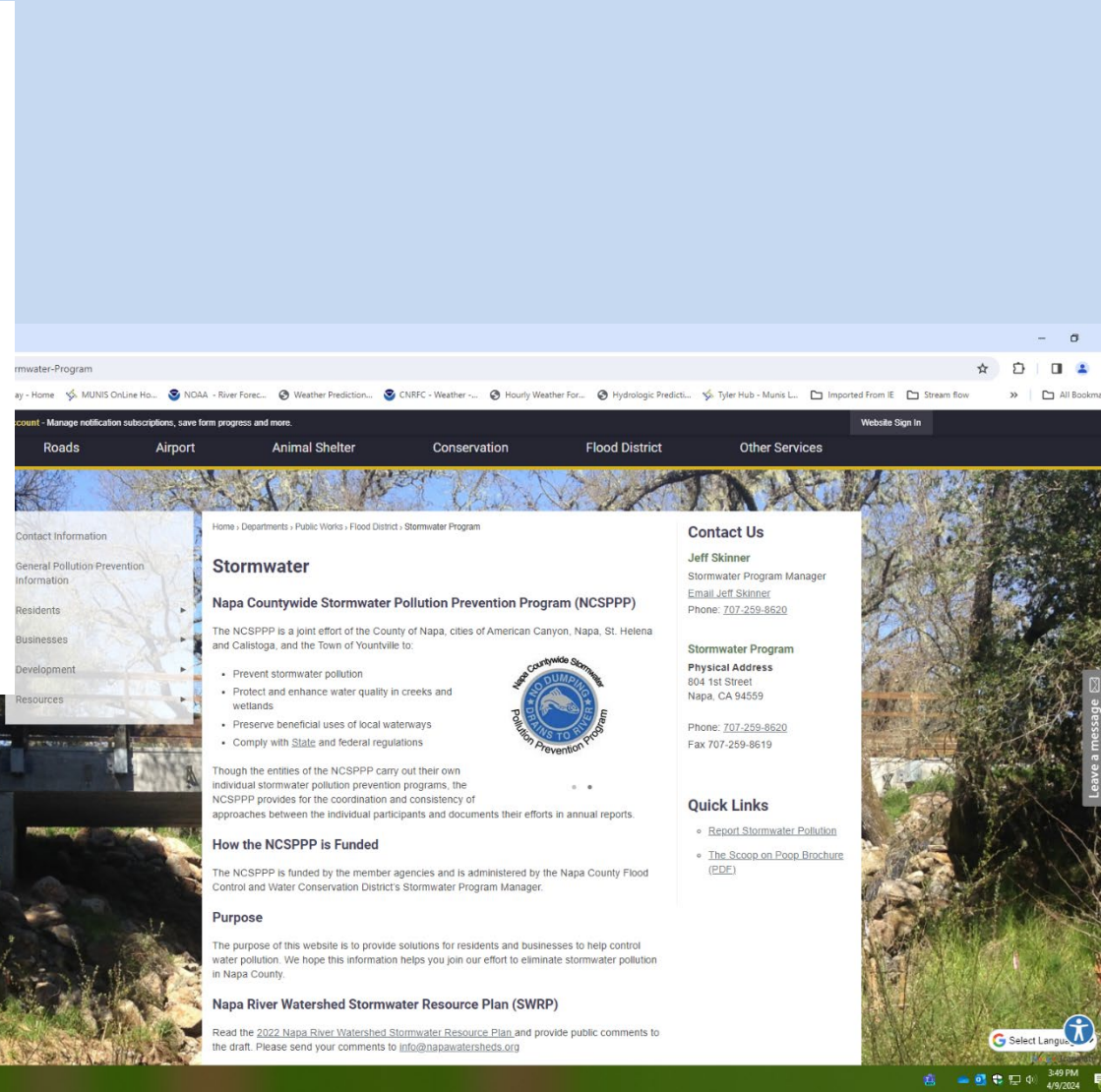


# Napa Countywide Stormwater Pollution Prevention Program (NCSPPP)

The Napa Countywide Stormwater Pollution Prevention Program is a joint effort (JPA) of the County of Napa, cities of American Canyon, Napa, St. Helena and Calistoga, and the Town of Yountville designed to:

- Prevent stormwater pollution
- Protect and enhance water quality in creeks
- Preserve beneficial uses of local waterways
- Comply with state and federal regulations

Flood District staff oversees compliance of these entities with the NPDES Permit





# Groundwater Monitoring



SECTION 2. PLAN AREA

## NAPA VALLEY SUBBASIN

GROUNDWATER SUSTAINABILITY PLAN

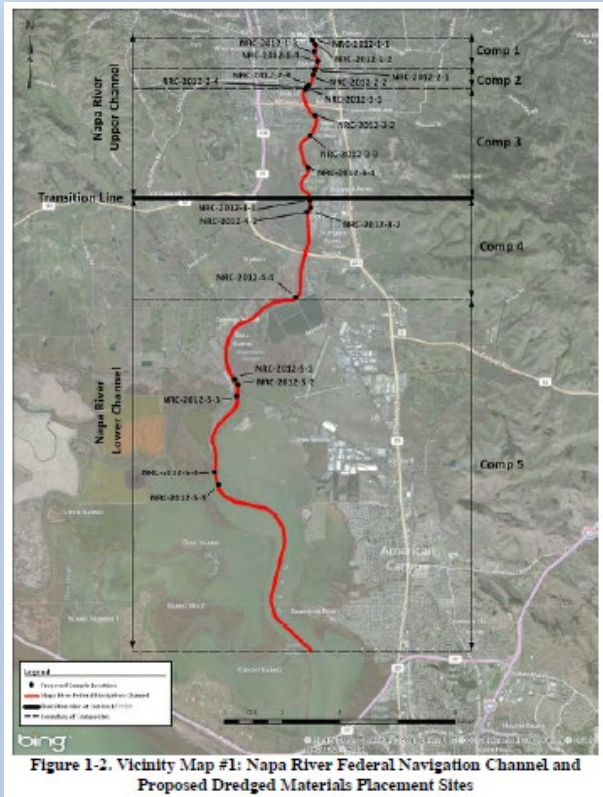
January 2022



District assists with monitoring of groundwater wells throughout Napa Valley



# Napa River Navigational Dredge Site Maintenance



# Napa River Restoration-Rutherford Project Assessment District



Expanded Riparian Corridor

Setback Berms

Floodplain Benches

Tributary Alcove

Instream Structures

3,054 Feet of Secondary Channels Created

31 Acres of Riparian Forest Enhanced

17 Acres of Slow Water Aquatic Habitat Created

2.5 Miles of Channel Widened

147 Instream Habitat Structures Installed


3.25 Acres of *Arundo donax* Eradicated

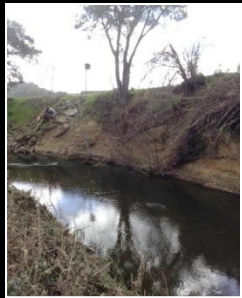
29 Landowners Participating and Funding Ongoing Monitoring and Maintenance Through an Assessment District



# Napa River Restoration-Oakville to Oak Knoll Project Community Facilities District



 Expanded Riparian Corridor  Setback Berms  Floodplain Benches  Tributary Alcove  Instream Structures



1,000 Feet of Secondary Channels Created

56 Acres of Riparian Forest Enhanced

2.4 miles of Channel widening along the 9 miles OVOK Reach

200 Instream Habitat Structures Installed

5 Acres of *Arundo donax* Eradicated

15 Landowners Participating and Funding Ongoing Monitoring and Maintenance Through a Community Facilities District



# Long Term Monitoring and Maintenance of Restoration Projects

