

**From:** [Ryan Gregory](#)  
**To:** [Ringel, Matthew](#)  
**Cc:** [Kevin Teague](#); [Richard Mendelson](#)  
**Subject:** Vineyard House Winery - Public Comment  
**Date:** Wednesday, August 27, 2025 4:03:49 PM  
**Attachments:** [250825 Entry Road REVS.pdf](#)

---

[External Email - Use Caution]

Hi Matthew. I am writing about some neighbor concerns (I am working for Bill Harlan) on the entry road work for this project. We have some suggestions to minimize environmental impacts per NC 18.108.010 and achieve similar practical effect. These are shown on the attached PDF. We have run these by the Applicant's engineer and he is agreeable to make the changes.

We are hoping this can be presented as a viable alternative to the Planning Commission on Sept 3, and can be recommended as a condition of approval so long as staff determines it to be feasible during building permit/engineering plan check.

Thanks, and let me know if you have any questions.

**Ryan Gregory, P.E.**  
Associate Principal

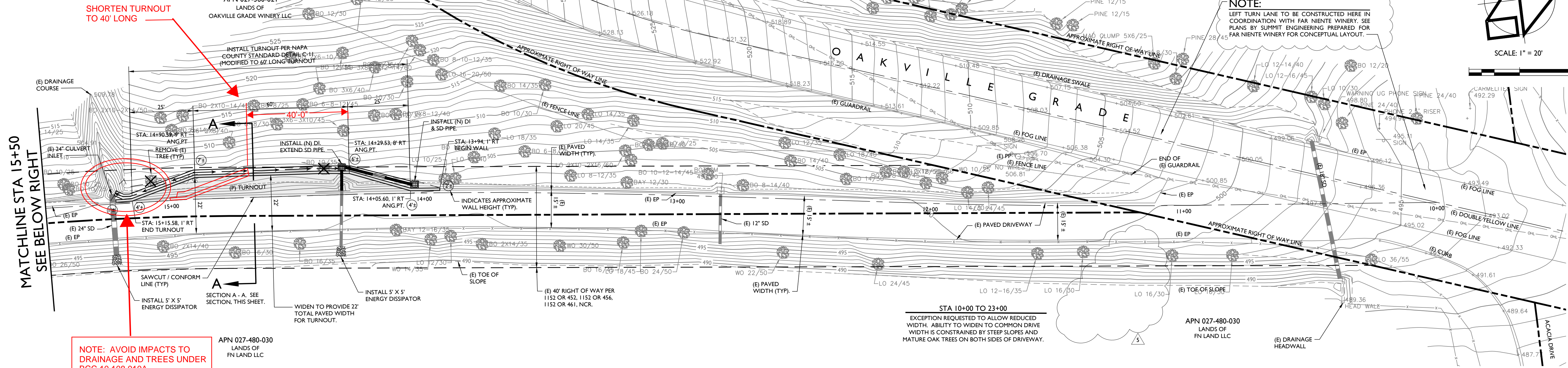
**SHERWOOD DESIGN ENGINEERS**

1665 2nd Street, Napa, CA 94559

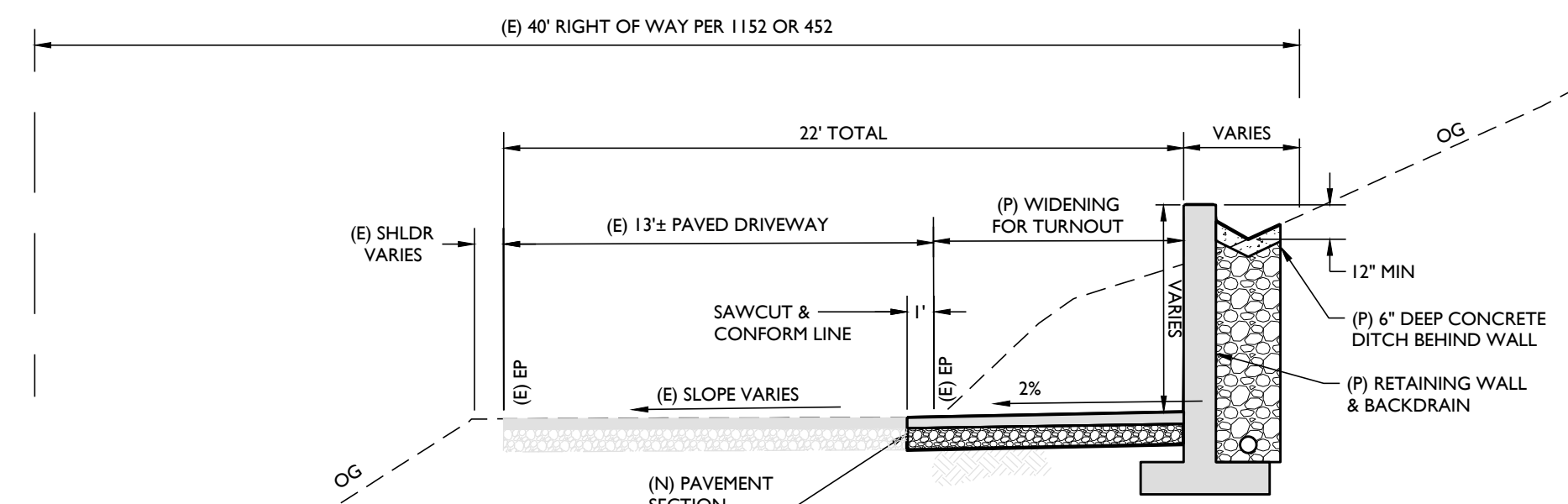
Main: 415.677.7300 x428 | Direct: 707.722.4987 | Cell: 707.337.4962  
[rgregory@sherwoodengineers.com](mailto:rgregory@sherwoodengineers.com) | [www.sherwoodengineers.com](http://www.sherwoodengineers.com)

Follow us: [Blog](#) | [Twitter](#) | [Facebook](#) | [LinkedIn](#) | [Instagram](#)

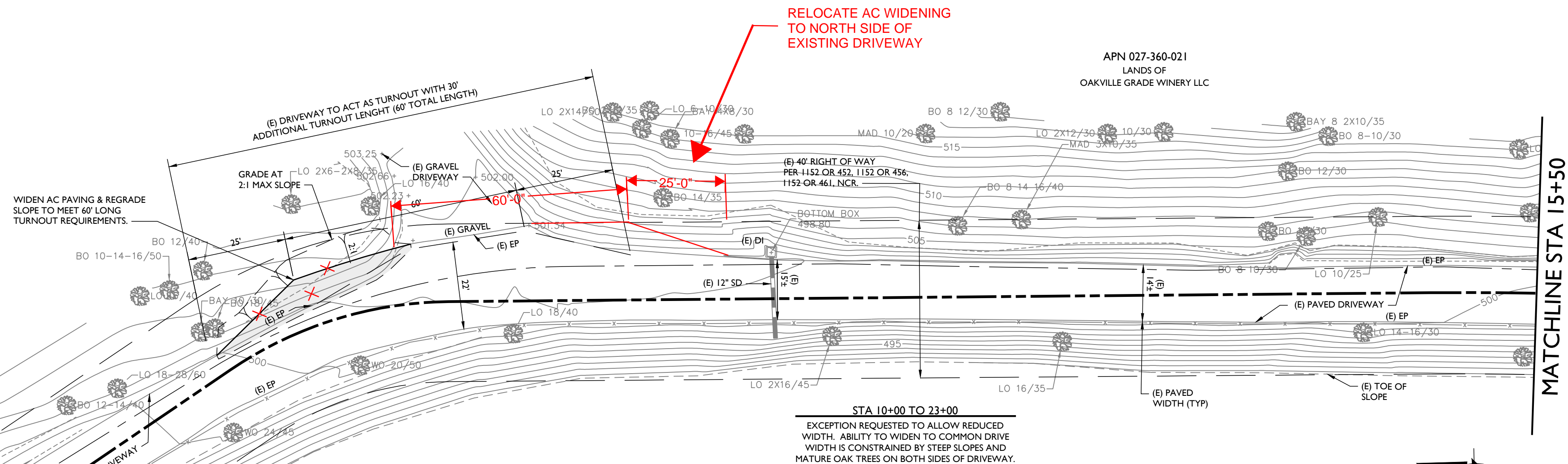




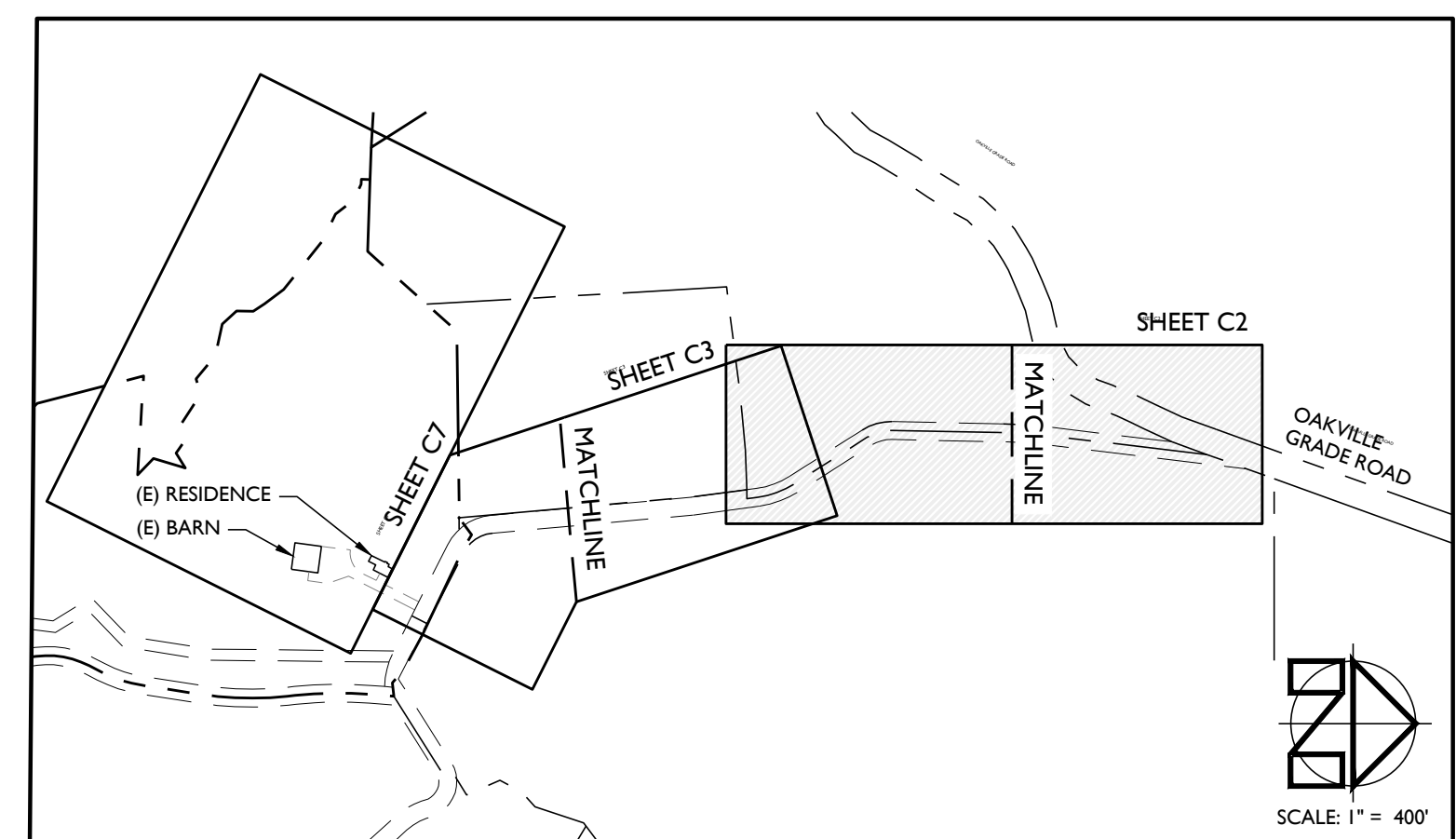
DRIVEWAY PLAN  
STA 10+00 TO STA 15+50  
SCALE: 1" = 20'



SECTION A - A  
TYPICAL DRIVEWAY WIDENING  
SCALE: 1" = 5'



DRIVEWAY PLAN  
STA 15+50 TO STA 22+00  
SCALE: 1" = 20'



KEY MAP  
SCALE: 1" = 400'



DRAWN BY:	SMI
CHECKED BY:	MRM
DATE:	MAY 31, 2022
REVISIONS:	BY:
1	8/30/2019 RESPONSE TO COMMENTS SMI
2	5/15/2021 PROJECT REVISIONS SMI
3	11/29/2021 PROJECT REVISIONS SMI
4	6/29/2022 PROJECT REVISIONS SMI
5	5/31/23 REVISIONS PER COUNTY COMMENTS SMI

JOB NUMBER:	10-130
FILE:	10-130CONC_DWY.DWG
ORIGINAL SIZE:	24" X 36"
SHEET NUMBER:	