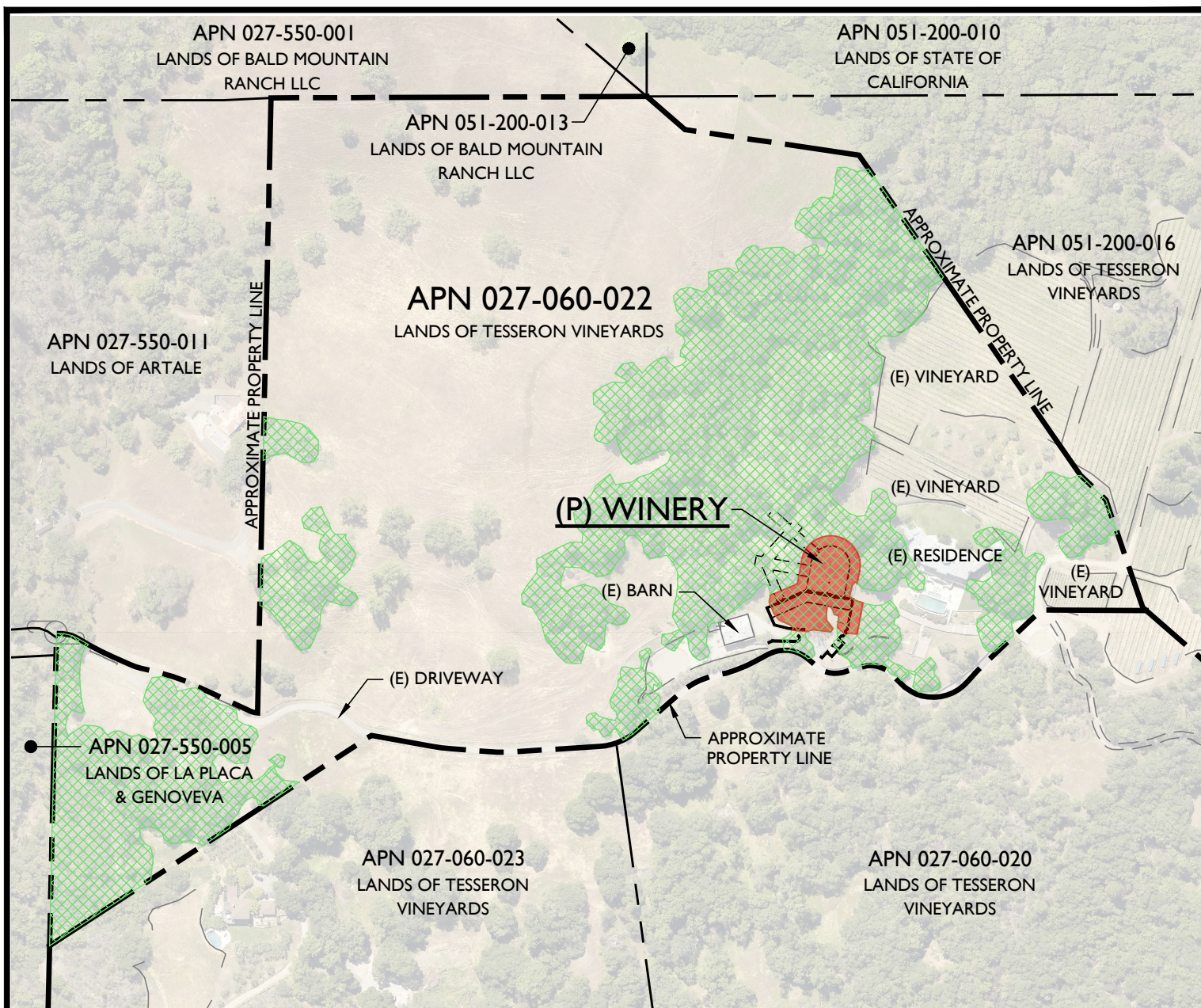


“H.2”

Vegetation Retention Analysis

Tesseron Winery P22-00309
Planning Commission Hearing Date
July 2, 2025



RETENTION SUMMARY

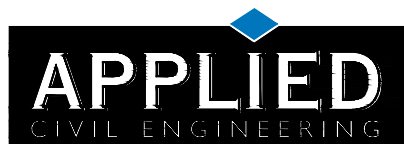
(E) VEGETATION CANOPY COVER	TOTAL
OAK WOODLAND & CONIFER FOREST	14.6 ± ACRES
TO BE REMOVED	0.5 ± ACRES
PERCENTAGE RETAINED	96% ±

AERIAL PHOTO SOURCE:

AERIAL PHOTOGRAPHS WERE OBTAINED FROM THE NAPA COUNTY GEOGRAPHIC INFORMATION SYSTEM (GIS) DATABASE, TAKEN APRIL TO JUNE 2018 AND MAY NOT REPRESENT CURRENT CONDITIONS.

VEGETATION RETENTION ANALYSIS EXHIBIT

SCALE: 1" = 300'



2160 Jefferson Street, Suite 230
Napa, CA 94559
(707) 320-4968 | www.appliedcivil.com

TESSERON VINEYARDS WINERY

1000 WALL ROAD
NAPA, CA 94558
APN 027-060-022



JOB NO. 17-108

JANUARY 2023