

Attachment E

Conservation Regulations Table and Graphic

Planning Commission Approval

Rutherford Ranch Winery
 Use Permit Major Modification P19-00126 and
 Use Permit Exception to the Conservation Regulations P23-00145
 Planning Commission Approved Actions

COMPONENTS NECESSARY TO REMEDY EXISTING CONSERVATION REGULATIONS VIOLATIONS			
Item		Applicant Proposal	PC Approval
1	Water tank #1	Remove	Remove
2	Water tank #2	Remove	Remove
3	Water tank #3 (to be relocated)	Remove	Remove
4	Water tank #4 (to be relocated)	Remove	Remove
5	Pergola	Remove	Remove
6	Greenhouse	Remove	Remove
7	Concrete pad - Partial (east side near parking area)	Remove	Remove
8	Tool Shed	Remove	Remove
9	Insulated container	Remove	Remove
10	Pump house	Keep	Keep
11	Surge tank	Keep	Remove
12	Wastewater transfer pump house	Keep	Remove
13	Concrete pad and retaining wall – south side of stream	Keep	Remove
14	Paved access drive to parking area	Keep	Remove
15	Fence (portion within setback)	Keep	Remove
16	Northern Parking area (portion within setback)	Keep	Remove
NEW PROPOSED WORK IN THE STREAM SETBACK			
17	Relocate water tanks (#3 and #4)	Relocate	Relocate
18	Remove unpermitted structures # 1-9 above	Remove	Remove
19	Restoration Plan	Proposed	Approve
20	Staff recommended removal of items #11-16 and restoration	Agreed to Staff's Recommendation	Remove items
ITEMS LEGALLY ESTABLISHED OR PRIOR TO CONSERVATION REGULATIONS			
	Outdoor work area north of the winery building		No PC Action
	Transformer located north of the outdoor work area		No PC Action
	Two (2) fire protection water storage tanks on the north side of the stream		No PC Action
	Fire protection storage pipes		No PC Action
	Residence (to be converted to winery offices)		No PC Action
	Outdoor patios between the winery building and residence		No PC Action
	Parking areas in front of the winery building and north of the lawn adjacent to the residence		No PC Action

Existing Site Development
Planning Commission
Approved Actions

Existing Development
Pre-Con Regs - No Action

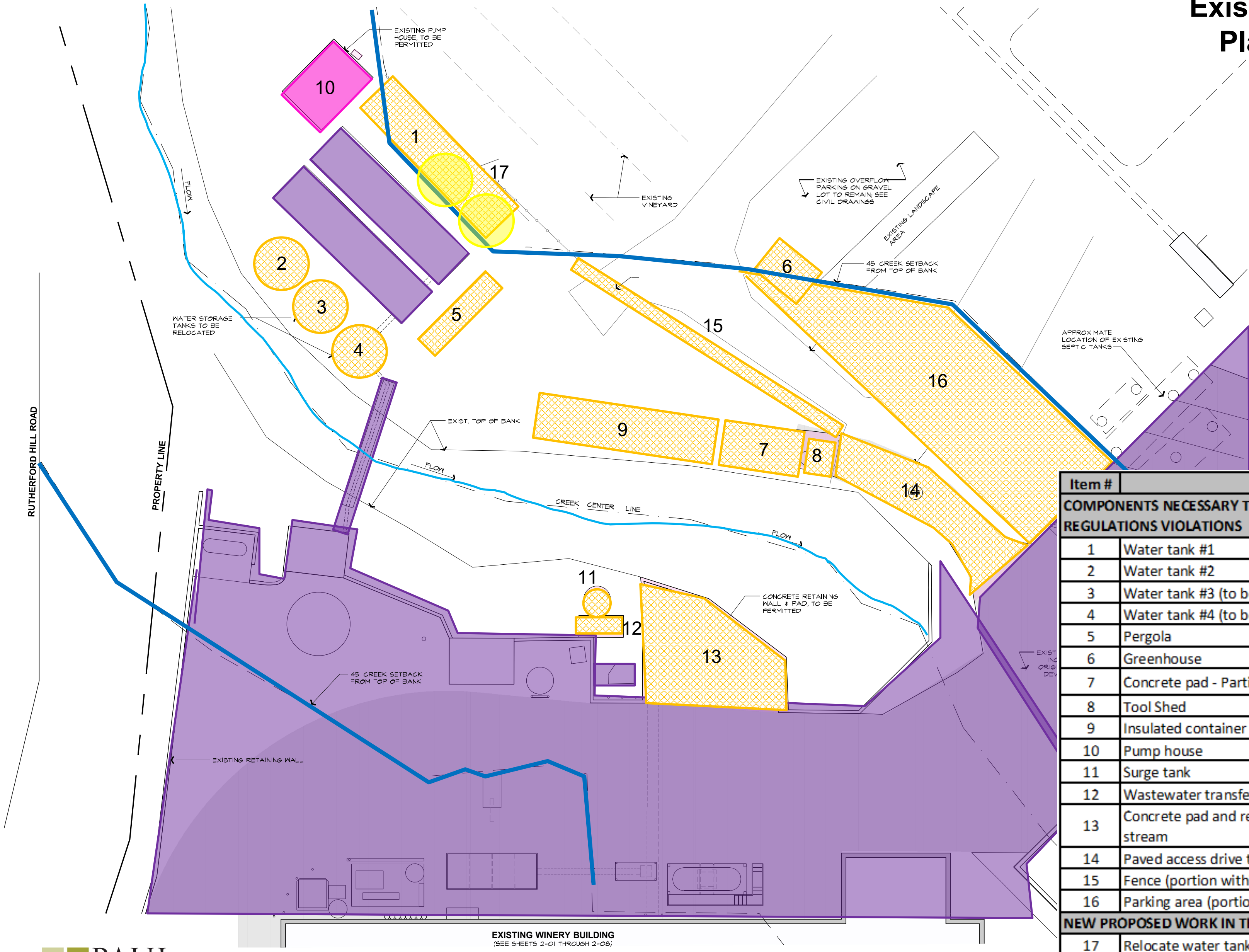
Remove

Remain

Relocate

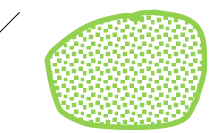




Stream Centerline

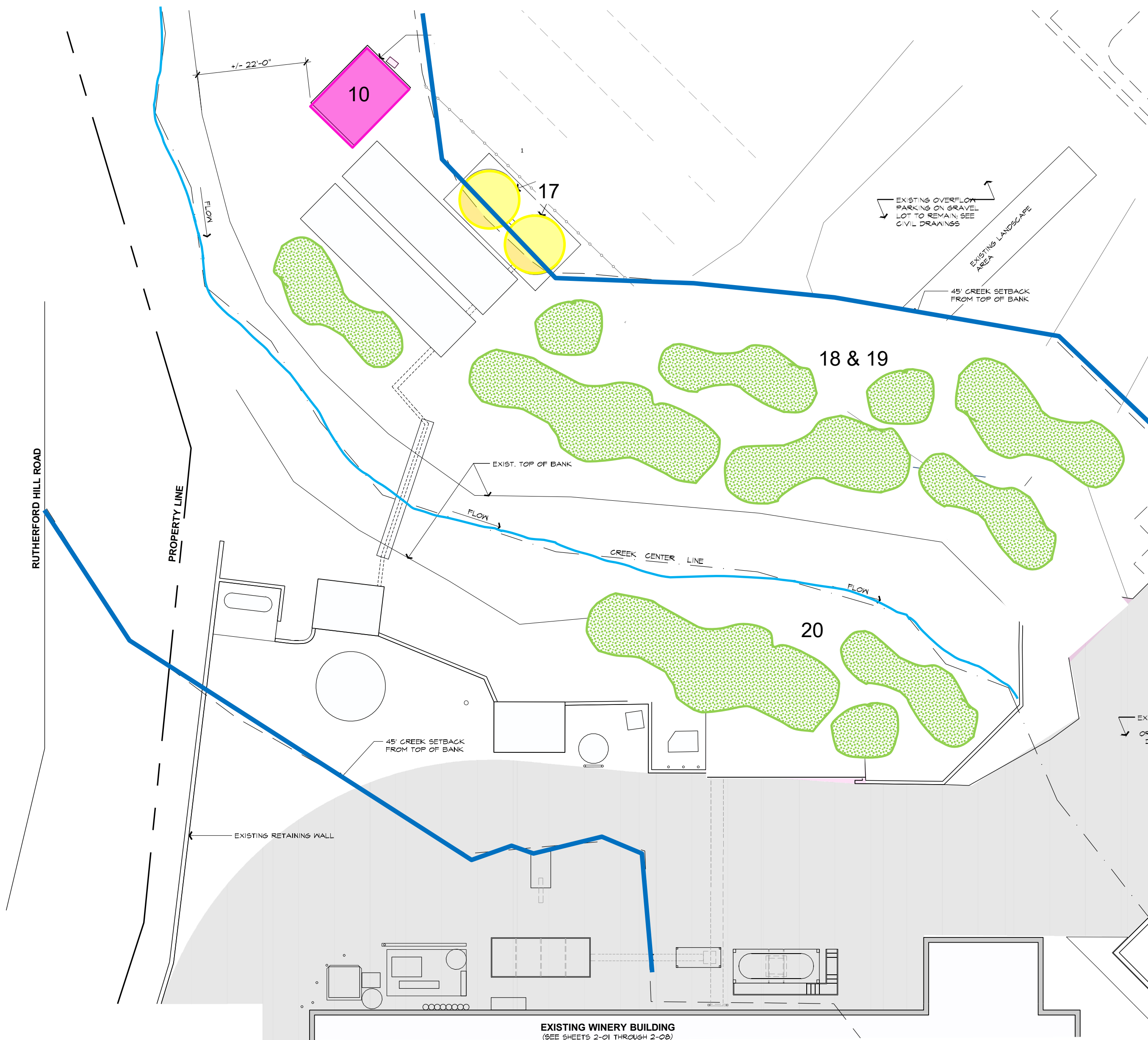
45-foot Stream Setback



Item #	Item	PC Approval
COMPONENTS NECESSARY TO REMEDY EXISTING CONSERVATION REGULATIONS VIOLATIONS		
1	Water tank #1	Remove
2	Water tank #2	Remove
3	Water tank #3 (to be relocated)	Remove
4	Water tank #4 (to be relocated)	Remove
5	Pergola	Remove
6	Greenhouse	Remove
7	Concrete pad - Partial (east side near parking area)	Remove
8	Tool Shed	Remove
9	Insulated container	Remove
10	Pump house	Keep
11	Surge tank	Remove
12	Wastewater transfer pump house	Remove
13	Concrete pad and retaining wall – south side of stream	Remove
14	Paved access drive to parking area	Remove
15	Fence (portion within setback)	Remove
16	Parking area (portion within setback)	Remove
NEW PROPOSED WORK IN THE STREAM SETBACK		
17	Relocate water tanks (#3 and #4)	Relocate
18	Remove unpermitted structures # 1-9 above	Remove
19	Restoration Plan	Approve
20	Staff recommended removal of items #11-16 and restoration	Remove items

Planning Commission Approved Plan

-  Restoration Plan
-  Remain
-  Relocated tanks
-  Stream Centerline
-  45-foot Stream Setback



Item #	Item	PC Approval
COMPONENTS NECESSARY TO REMEDY EXISTING CONSERVATION REGULATIONS VIOLATIONS		
1	Water tank #1	Remove
2	Water tank #2	Remove
3	Water tank #3 (to be relocated)	Remove
4	Water tank #4 (to be relocated)	Remove
5	Pergola	Remove
6	Greenhouse	Remove
7	Concrete pad - Partial (east side near parking area)	Remove
8	Tool Shed	Remove
9	Insulated container	Remove
10	Pump house	Keep
11	Surge tank	Remove
12	Wastewater transfer pump house	Remove
13	Concrete pad and retaining wall – south side of stream	Remove
14	Paved access drive to parking area	Remove
15	Fence (portion within setback)	Remove
16	Parking area (portion within setback)	Remove
NEW PROPOSED WORK IN THE STREAM SETBACK		
17	Relocate water tanks (#3 and #4)	Relocate
18	Remove unpermitted structures # 1-9 above	Remove
19	Restoration Plan	Approve
20	Staff recommended removal of items #11-16 and restoration	Remove items