

The background of the slide is a satellite map of Napa County, California. It shows the Napa River winding through the landscape, connecting the inland areas to the San Francisco Bay. The terrain is a mix of brownish hills, green agricultural fields, and urban areas with grey buildings. The bay is visible on the left side of the image.

Regional Shoreline Adaptation Plan

An implementing project of **BAY ADAPT**

Resilient Napa Shoreline: The Role of Regional Shoreline Adaptation Plans

Napa County Climate Action
Committee

2/3 of California's sea level rise impacts will be felt in the Bay Area

- Already seen: + 8 inches SLR*
- Projected by 2050: 0.8 ft SLR**
- End of Century: 3.1 – 6.6 ft SLR?

** Past sea level rise as measured by NOAA tidal datums for the San Francisco Bay*

***Projections based on 2024 State of California Sea Level Rise Guidance*

Photo: Levee Breach near Highway 37 (February 26, 2019)
Photo courtesy of Ghilotti Construction Company



**Regional Shoreline
Adaptation Plan**
An implementing project of **BAY ADAPT**





What's at risk?*

- **20,000** acres of wetlands habitat
- **5 million** daily vehicle trips
- **60,000** daily rail commuters
- **13,000** existing housing units
- **70,000** new planned housing units
- **104,000** existing jobs
- **85,000** new planned jobs
- **28,000** socially vulnerable residents
- *ART Bay Area, 2020. Risks at 4' SLR

Cost of inaction**

- **\$230 billion** in damages
- **Funding and Investment Framework, 2023, costs include assessed property values and select transportation infrastructure at 4.9' SLR



Regional Shoreline
Adaptation Plan
An implementing project of BAY ADAPT



Photo by Sergio Ruiz courtesy of California King Tides project.

How Much Will it Cost?

Adaptation Needs

\$110 billion¹

Estimated cost of sea level rise adaptation through 2050 (in Year of Expenditure dollars)

- **\$52 billion:** Estimated cost for known or planned projects
- **\$54 billion:** Estimated placeholder cost for areas with adaptation needs
- **\$3 billion:** Estimated additional sediment management needs³

Cost of Inaction

\$230+ billion²

Estimated value of a subset of assets at risk through 2050

**The cost of inaction is far higher than the cost of adaptation.
We stand to lose much more if we do not act**

¹ In year of expenditure (YOE) dollars. ² In 2022 dollars. ³ Estimate developed by BCDC and SFEI analysis.

Napa County Highlights

American Canyon Wetlands Restoration Project



Estimated median cost: \$36.9 million
Project type: Green
Adaptation types: Restoration/Rehabilitation/Enhancement
Protective to 4.9 ft. TWL: N/A
Project status: Planning/Scoping

- Project Type
- Grey
 - Hybrid
 - Green
 - Placeholders

Napa Projects (by cost)

SR 37 Corridor

Petaluma River Baylands Strategy

Novato Baylands

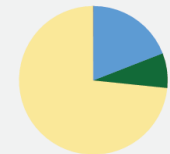
American Canyon Wetlands Restoration Project

The Grand Byway

Ederly Island Prioritized Alternative: Groundwater Well and Wastewater System Floodproofing

Napa River Flood Protection Project

Napa
\$5 B



What are cities and counties required to do to plan for sea level rise adaptation?

- SB 272 (Laird, 2023) mandates that **local governments within BCDC's jurisdiction must complete a Subregional Shoreline Adaptation Plan** by January 2034
- BCDC is charged with developing the guidelines for these Subregional Plans by December 2024 – **Subregional Plan Guidelines are included in the RSAP**
- Local governments will submit completed plans to BCDC **for review and approval**
- Local governments are eligible for **SB1 funding to complete plans** and completed plans unlock implementation dollars

Lots of flexibility to use and build upon what you've already done

Cities and Counties in BCDC's jurisdiction

*Local government not in BCDC's jurisdiction but impacted by near-term coastal flood hazards

Lots of flexibility in how to create your plans with and across jurisdictions

Counties with BCDC Jurisdiction

Cities with BCDC Jurisdiction or impacted by near-term coastal hazards

Alameda

Alameda
Albany
Berkeley
Emeryville
Fremont

Hayward
Newark
Oakland
San Leandro
Union City

Contra Costa

Concord*
El Cerrito*
Hercules
Martinez

Pinole
Pittsburg*
Pleasant Hill*
Richmond

Marin

Belvedere
Corte Madera
Larkspur
Mill Valley
Novato

Ross*
San Rafael
Sausalito
Tiburon

Napa

American Canyon*

Napa*

San Francisco

San Francisco

San Mateo

Belmont
Brisbane
Burlingame
East Palo Alto
Foster City
Menlo Park

Millbrae
Redwood City
San Bruno
San Carlos
San Mateo
South San Francisco

Santa Clara

Milpitas
Mountain View
Palo Alto

San Jose
Santa Clara*
Sunnyvale

Solano

Benicia
Fairfield*

Suisun City
Vallejo

Sonoma

Petaluma

- **Coordinated** adaptation
- Priority resources to **frontline communities**
- Long-term **health of wetlands**
- **Strategic** implementation
- Common **standards and methods**
- Advance priority **projects** and **funding**
- Track and **measure progress**

Why do we need a regional approach to adaptation planning?

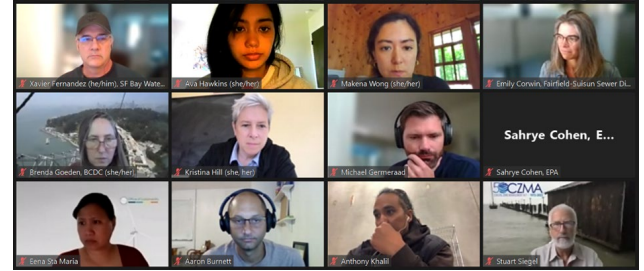


Regional Shoreline Adaptation Plan

An implementing project of **BAY ADAPT**



Communities have shaped this draft



- **10** Community events
- **5** Advisory Group meetings
- **15+** Subcommittee meetings
- **1** Public workshop
- **5** Local workshops
- **1** Practitioner workshop
- **3** Conferences
- **1** Online survey
- **9-County** local elected official road show

Bottom three photos by Karl Nielson.



Napa County Electeds Engaged with BCDC

Commissioners and Alternates

- **Belia Ramos**, Napa County Board of Supervisors (Commissioner)
- **Joelle Gallagher**, Napa County Board of Supervisors (Alternate)

Local Electeds Task Force

- **Mark Joseph**, City of American Canyon

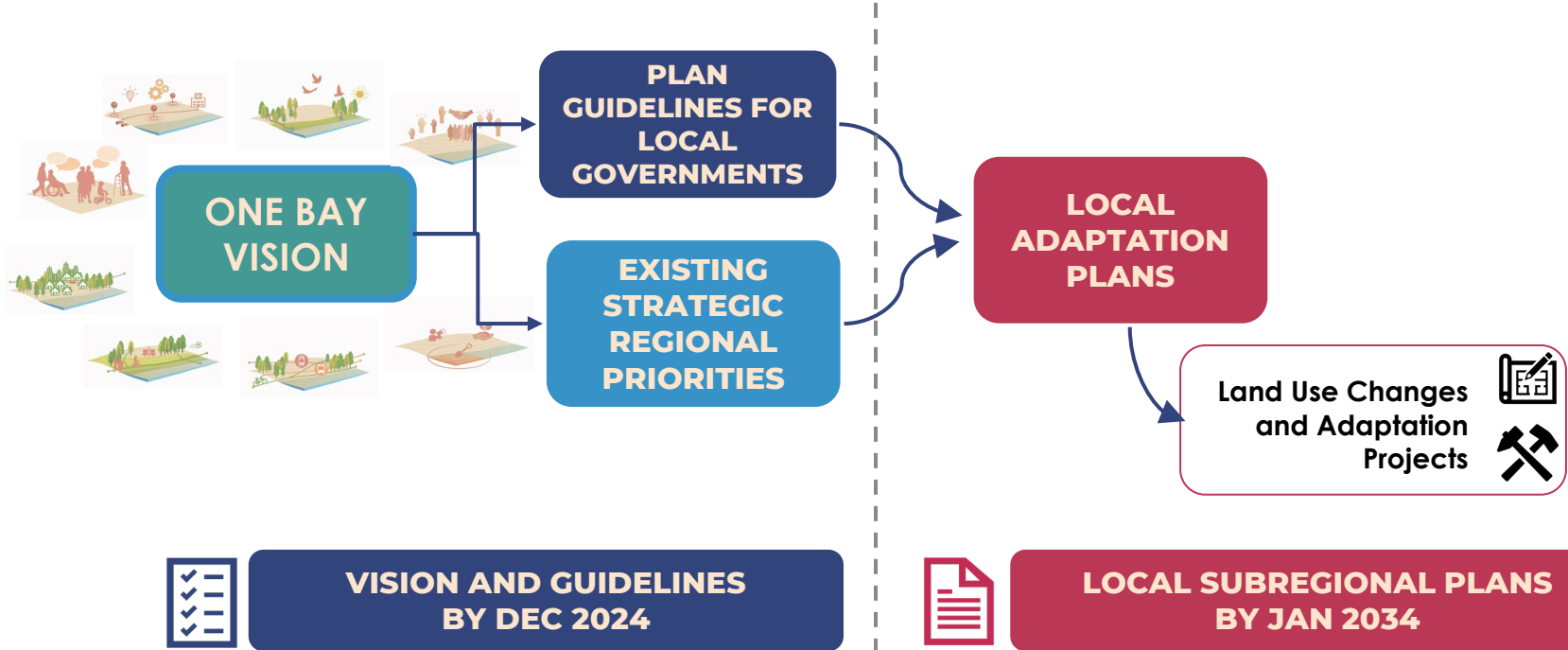
How do we start developing guidelines?



What Constitutes The Regional Shoreline Adaptation Plan?



**REGIONAL
ADAPTATION
ONLINE MAP**



**VISION AND GUIDELINES
BY DEC 2024**



**LOCAL SUBREGIONAL PLANS
BY JAN 2034**

Where are we now?

WHAT IS A SUBREGIONAL PLAN?

Possible Scale and Leads

- County Plan
- Single Jurisdiction Local Plan
- Multi-Jurisdictional Local Plan
- Combo

Plan Contents

- Vulnerability Assessment
- Adaptation Pathways
- Project List
- Land Use Plan
- Implementation Plan

Submission and Adoption

- Submit to BCDC for approval
- Local adoption
- Incorporated into local plans
- Eligible for prioritized funding for projects after adoption

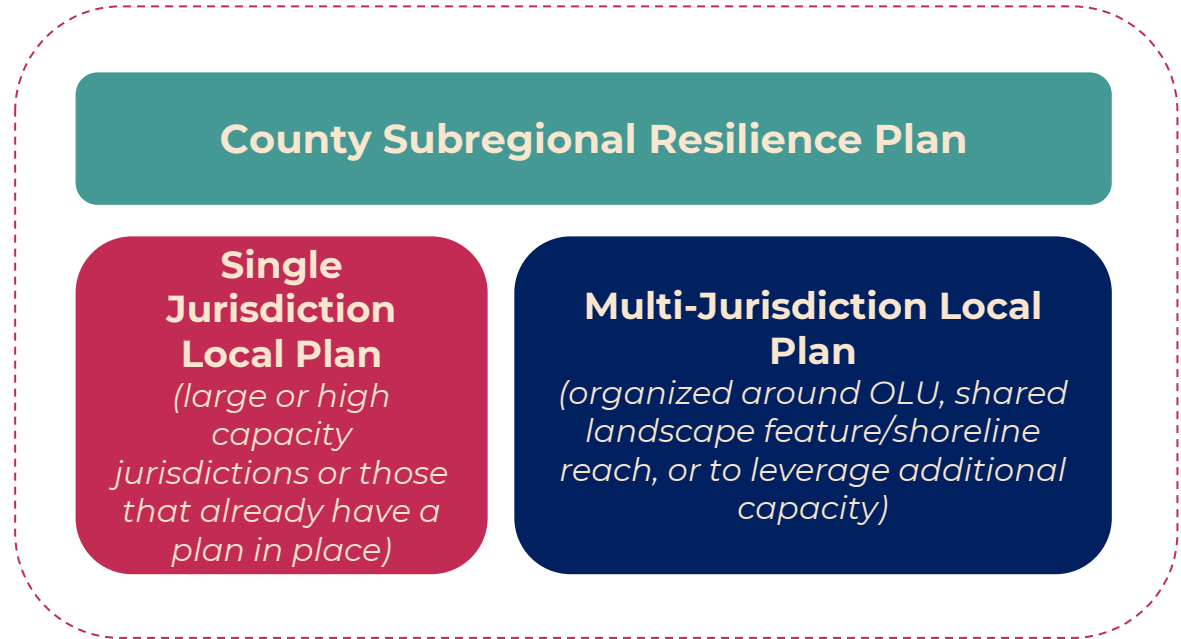
Subregional Plan Requirements Key Concepts

County Plan

- Covers unincorporated parts of the county
- Coordinates and organizes local plans

Local Plans

- Jurisdictions may submit **either** a single jurisdiction local plan or partner with their neighbors to submit a multi-jurisdiction local plan



Subregional Shoreline Resiliency Plan

How can the RSAP assist local governments?

- ✓ **Reduce uncertainty** surrounding climate change adaptation plans and projects
- ✓ Provide **needed resources** for planning and projects
- ✓ Plan in an **integrated way**
- ✓ **Prioritize** EJ communities, local and regionally-significant infrastructure, habitats, and areas most at risk into a cohesive planning process
- ✓ Require **collaboration** for multi-benefit and multi-jurisdictional adaptation projects



RSAP – What’s Next

- Sea Level Rise **Planning Grants available now** from Ocean Protection Council!
- **Local Electeds Task Force** meeting
- Launching a **Shoreline Leadership Academy** to build capacity for community-driven planning
- **Public review and Commission approval** of RSAP guidelines in December 2024
- **Technical and policy assistance** program to help plans get developed in 2025
- Long-term **funding strategy** – how will the region pay for this and decide what to fund first?
- **Aligning permitting** with innovative planning



Stay Involved

Learn more & sign up for our newsletter at

www.bayadapt.org

Larry Goldzband

Executive Director

Larry.Goldzband@bcdc.ca.gov

Dana Brechwald

Assistant Planning Director for Climate Adaptation

Dana.Brechwald@bcdc.ca.gov