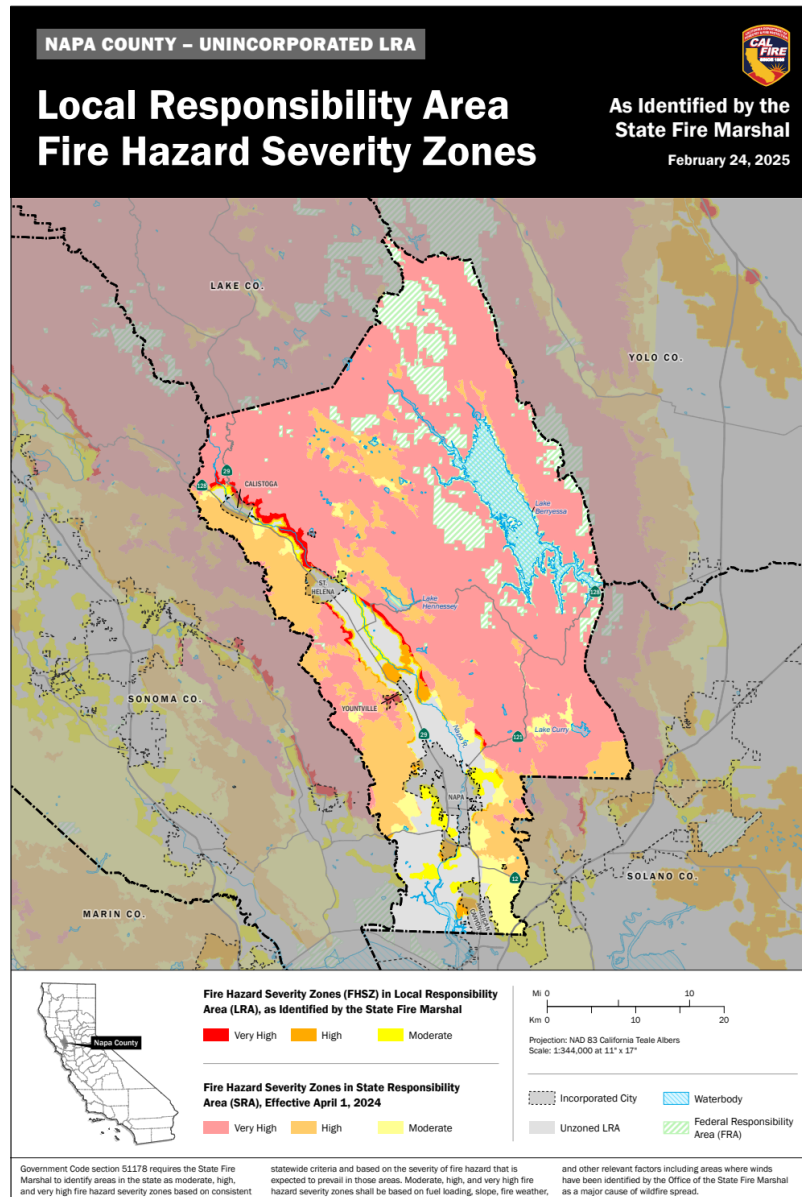




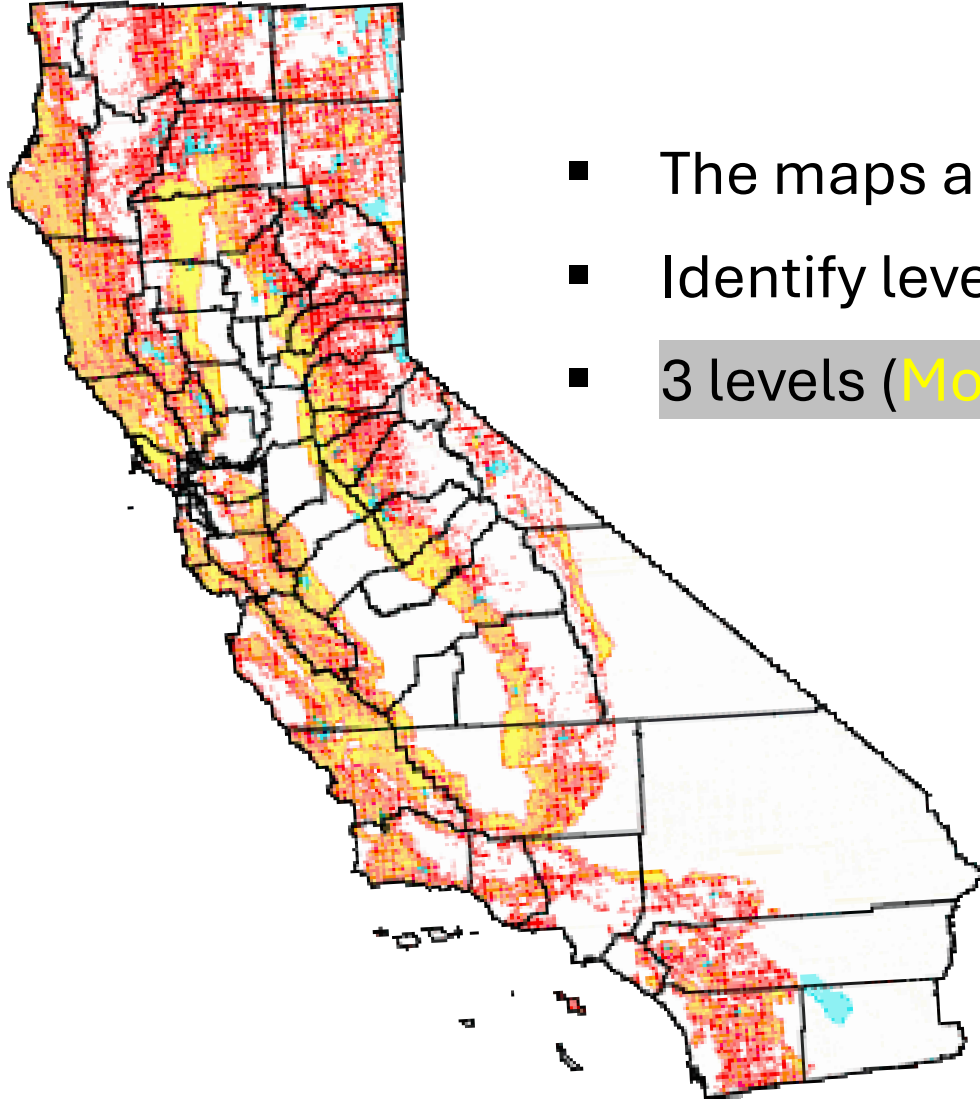
Local Responsibility Area Fire Hazard Severity Zone

Map Adoption

May 6th, 2025

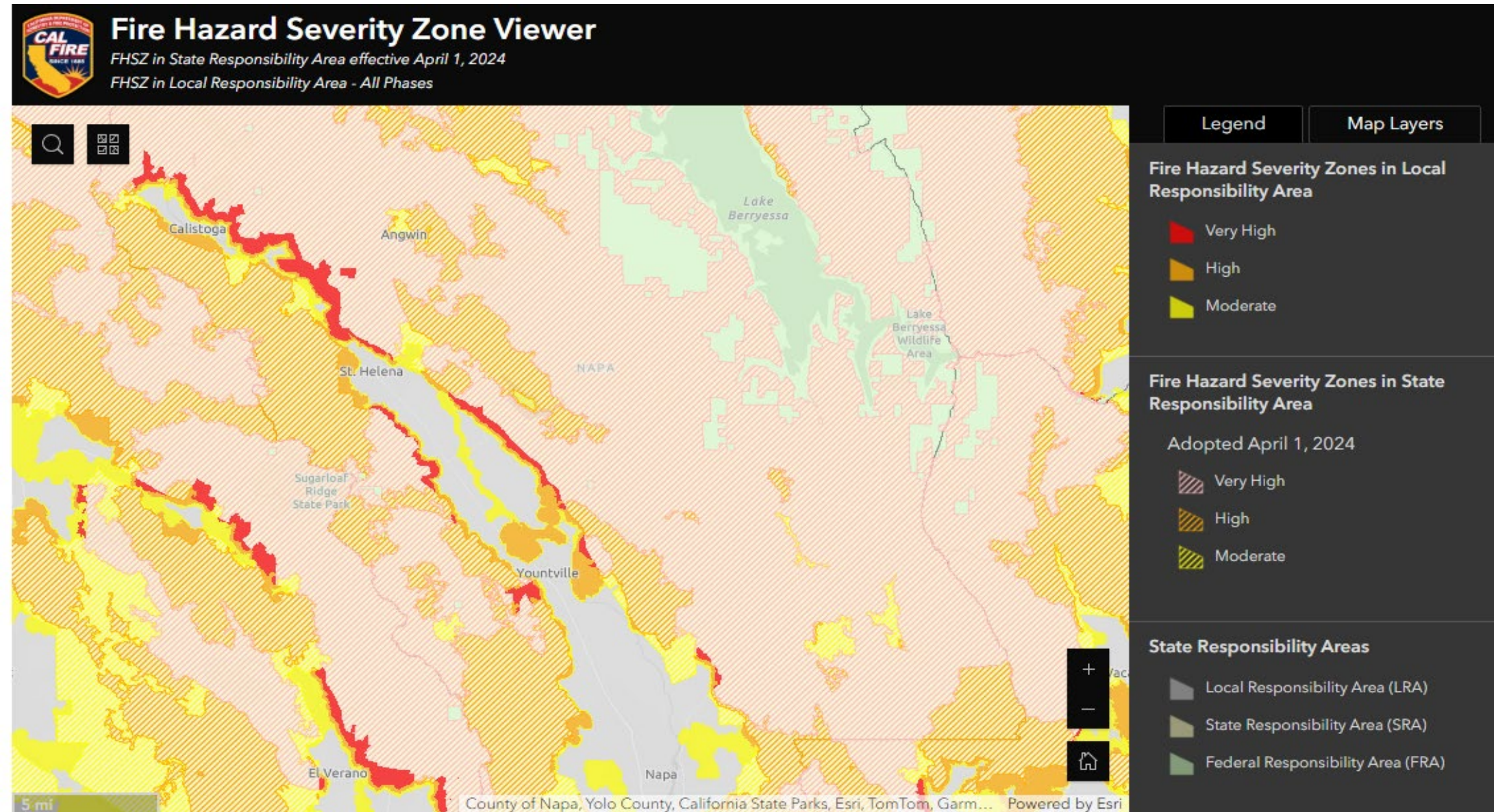


Fire Hazard Severity Zones - Facts



- The maps are required by Government Code 51178 & 51179
- Identify levels of fire hazard
- 3 levels (Moderate, High, & Very High)
- CAL FIRE used the best available science and data to develop, and field test a model that served as the basis of zone assignments. The model evaluated the probability of the area burning and potential fire behavior in the area.
- Factors: fire history, vegetation, flame length, blowing embers, proximity to wildland, terrain, and weather

Napa County LRA Maps



How will these Maps be used by Napa County?



- Building standards for new construction in the Wildland-Urban Interface (California Building Code Chapter 7A)
- Property development standards such as road widths, water supply and signage (Fire Safe Regulations)
- Defensible Space Requirements (Government Code 51182)
- Natural hazard real estate disclosure (AB 38 Inspections)

What's Impacted.....

