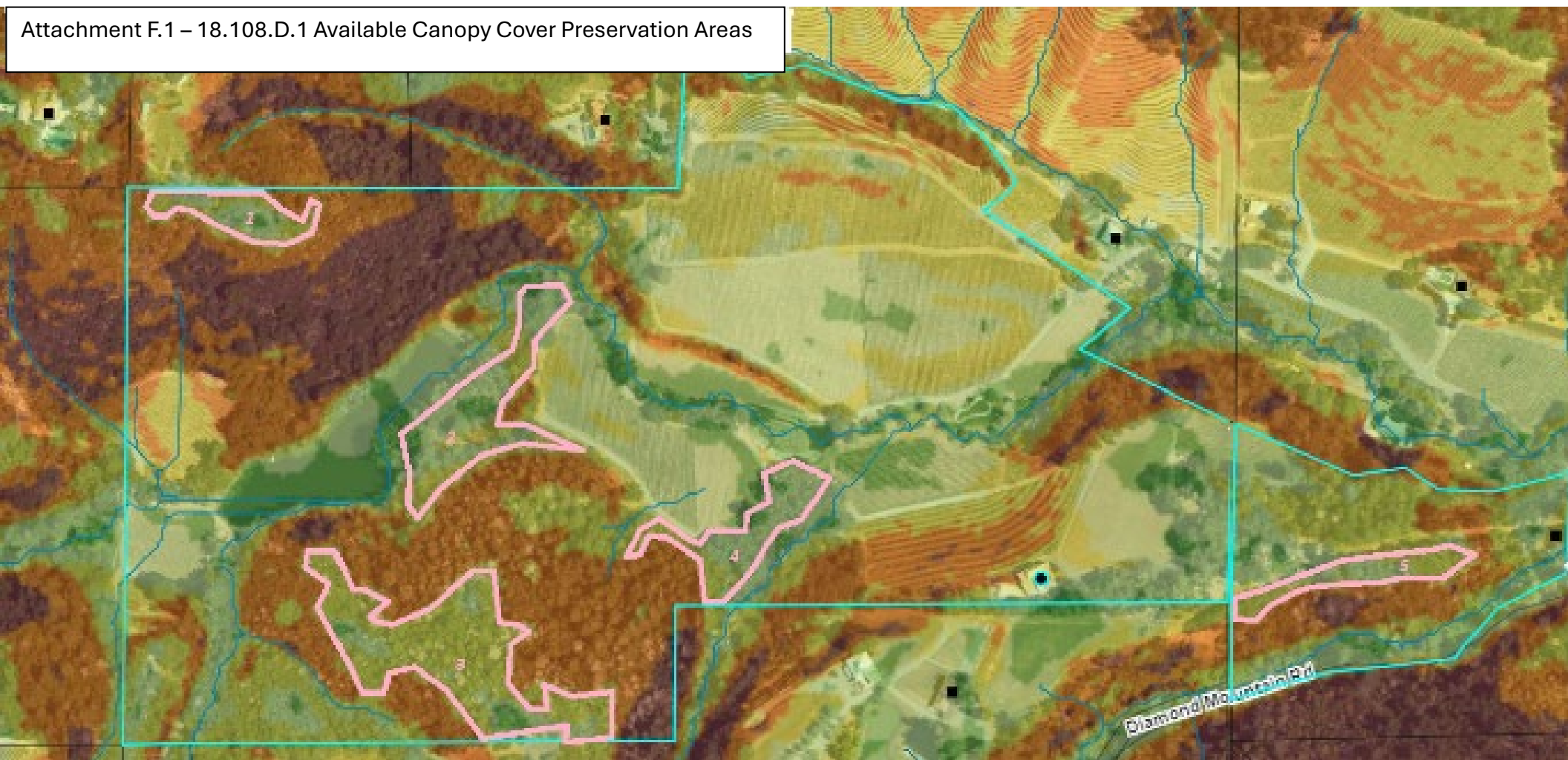


“J-1”

Potential Canopy Preservation Areas



✓ Slope (2007)



Potential Canopy Mitigation Areas - 18.108.020.D.1:

- Area 1: ~ 0.82 acres
- Area 2: ~ 1.78 acres
- Area 3 : ~ 3.2 acres
- Area 4: ~ 1.11 acres
- Area 5: ~ 0.73 acres

Total Available Acreage: 7.64