

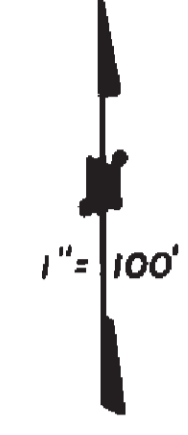
# COUNTY ASSESSOR'S PARCEL MAP

## PTN. NAPA RANCHO

44-30

Tax Area Code  
2003, 2001  
2000

44-18

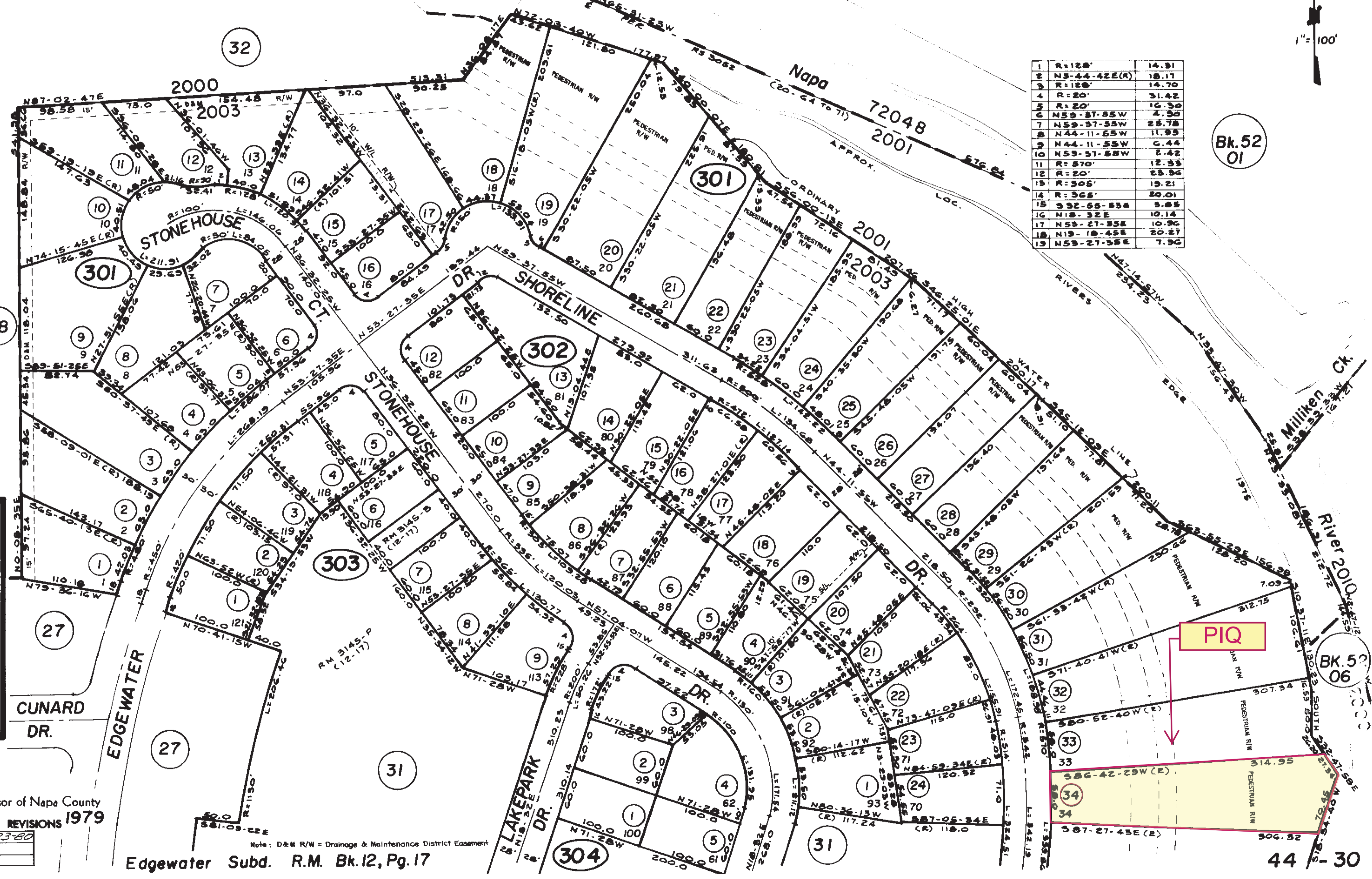


1	R=128'	14.91
2	N5-44-42E(R)	18.17
3	R=128'	14.70
4	R=20'	31.42
5	R=20'	16.30
6	N59-37-55W	4.30
7	N59-37-55W	25.78
8	N44-11-55W	11.99
9	N44-11-55W	6.44
10	N59-37-55W	2.42
11	R=570'	12.33
12	R=20'	23.36
13	R=306'	19.21
14	R=366'	20.01
15	S92-55-53E	3.85
16	N18-32E	10.14
17	N53-27-35E	10.96
18	N19-18-45E	20.27
19	N53-27-35E	7.96

Bk. 52  
01

**NOTE:** This Map Was Prepared For Assessment Purposes Only, No Liability Is Assumed For The Accuracy Of The Data Delineated Hereon.

Assessor of Napa County  
REVISIONS 1979  
6-23-80



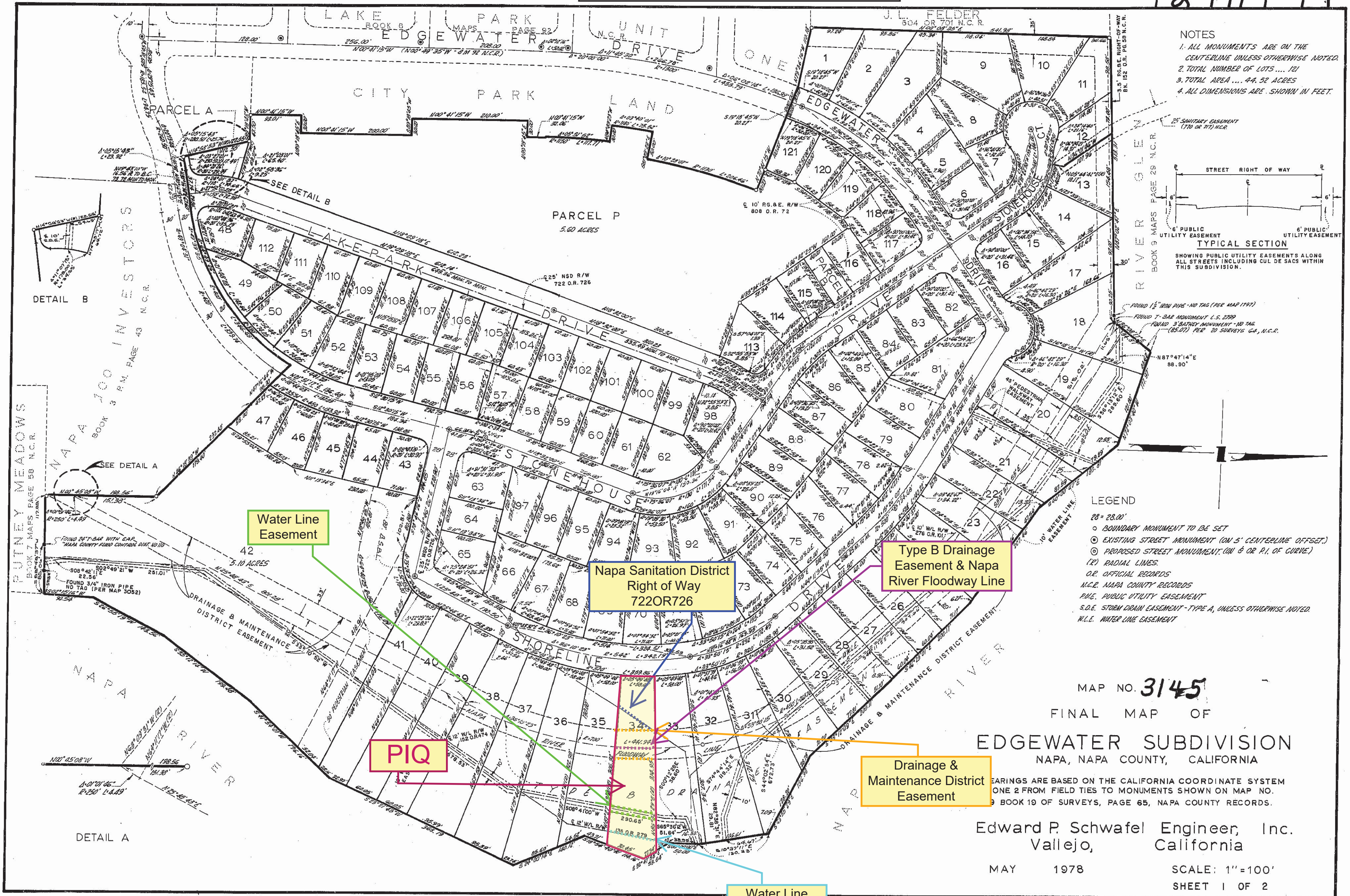
Edgewater Subd. R.M. Bk. 12, Pg. 17

BK. 52  
06

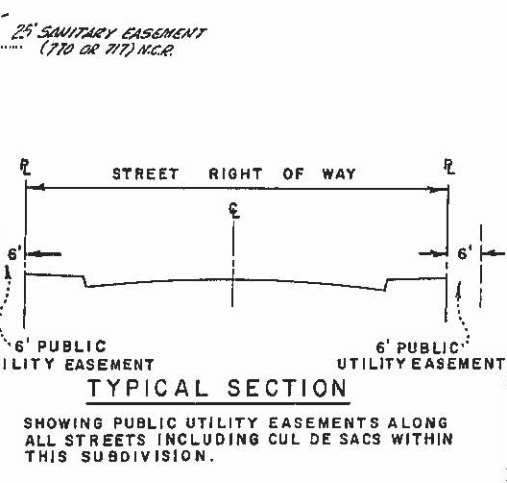
44-30

THIS MAP MAY OR MAY NOT BE A SURVEY OF THE LAND DEPICTED HEREON. YOU SHOULD NOT RELY UPON IT FOR ANY PURPOSE OTHER THAN ORIENTATION TO THE GENERAL LOCATION OF THE PARCEL OR PARCELS DEPICTED, FIRST AMERICAN TITLE COMPANY OF NAPA EXPRESSLY DISCLAIMS ANY LIABILITY FOR ALLEGED LOSS OR DAMAGE WHICH MAY RESULT FROM RELIANCE UPON THIS MAP.

12 RM 17



- NOTES
1. ALL MONUMENTS ARE ON THE CENTERLINE UNLESS OTHERWISE NOTED.
  2. TOTAL NUMBER OF LOTS ... 121
  3. TOTAL AREA ... 44.52 ACRES
  4. ALL DIMENSIONS ARE SHOWN IN FEET.



- LEGEND
- 28' = 28.00'
  - BOUNDARY MONUMENT TO BE SET
  - ⊙ EXISTING STREET MONUMENT (ON 5' CENTERLINE OFFSET)
  - ⊙ PROPOSED STREET MONUMENT (ON & OR P.I. OF CURVE)
  - (R) RADIAL LINES
  - O.R. OFFICIAL RECORDS
  - M.C.R. NAPA COUNTY RECORDS
  - P.U.E. PUBLIC UTILITY EASEMENT
  - S.D.E. STORM DRAIN EASEMENT - TYPE A, UNLESS OTHERWISE NOTED
  - W.L.E. WATER LINE EASEMENT

MAP NO. 3145  
 FINAL MAP OF  
 EDGEWATER SUBDIVISION  
 NAPA, NAPA COUNTY, CALIFORNIA

BEARINGS ARE BASED ON THE CALIFORNIA COORDINATE SYSTEM  
 ONE 2 FROM FIELD TIES TO MONUMENTS SHOWN ON MAP NO.  
 9 BOOK 19 OF SURVEYS, PAGE 65, NAPA COUNTY RECORDS.

Edward P. Schwafel Engineer, Inc.  
 Vallejo, California

MAY 1978 SCALE: 1" = 100'  
 SHEET 1 OF 2