

COUNTY ASSESSOR'S PARCEL MAP

PTN. NAPA RANCHO

44-30

Tax Area Code
2003, 2001
2000

44-18



1	R=120'	14.31
2	N5-44-42E(R)	18.17
3	R=120'	14.70
4	R=20'	31.42
5	R=20'	16.30
6	N59-37-55W	4.30
7	N59-37-55W	25.78
8	N44-11-55W	11.93
9	N44-11-55W	6.44
10	N59-37-55W	2.42
11	R=570'	12.33
12	R=20'	23.36
13	R=306'	19.21
14	R=366'	20.01
15	S92-55-53E	3.55
16	N18-32E	10.14
17	N53-27-55E	10.96
18	N13-18-45E	20.27
19	N53-27-55E	7.96

Bk. 52
01

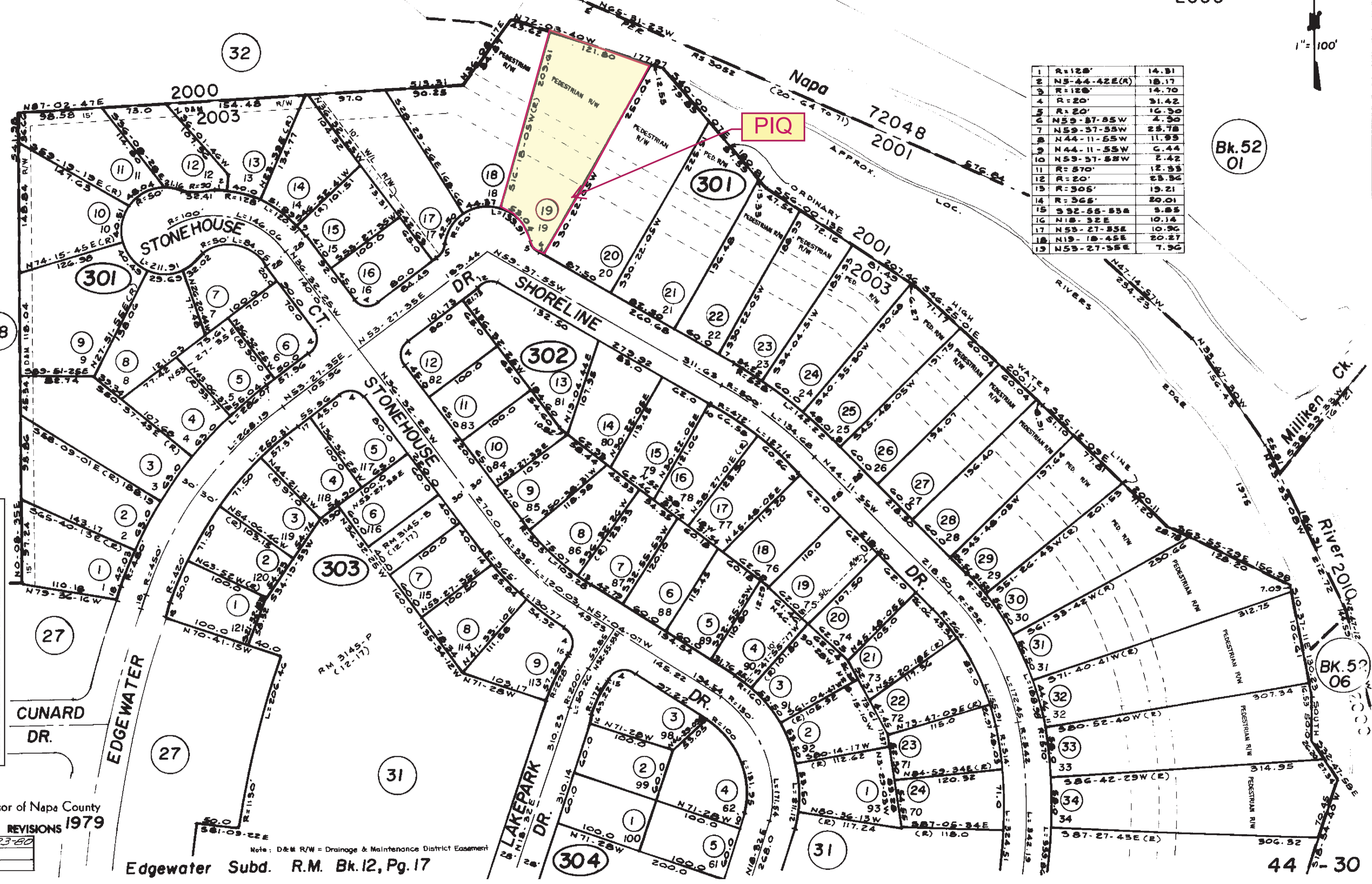
THIS MAP OR MAY NOT BE A SURVEY OF THE LAND DEPICTED HEREON. YOU SHOULD NOT RELY UPON IT FOR ANY PURPOSE OTHER THAN ORIENTATION TO THE GENERAL LOCATION OF THE PARCEL OR PARCELS DEPICTED, FIRST AMERICAN TITLE COMPANY OF NAPA EXPRESSLY DISCLAIMS ANY LIABILITY FOR ALLEGED LOSS OR DAMAGE WHICH MAY RESULT FROM RELIANCE UPON THIS MAP.

Assessor of Napa County
REVISIONS 1979

6-23-80

Note: D&M R/W = Drainage & Maintenance District Easement

Edgewater Subd. R.M. Bk. 12, Pg. 17

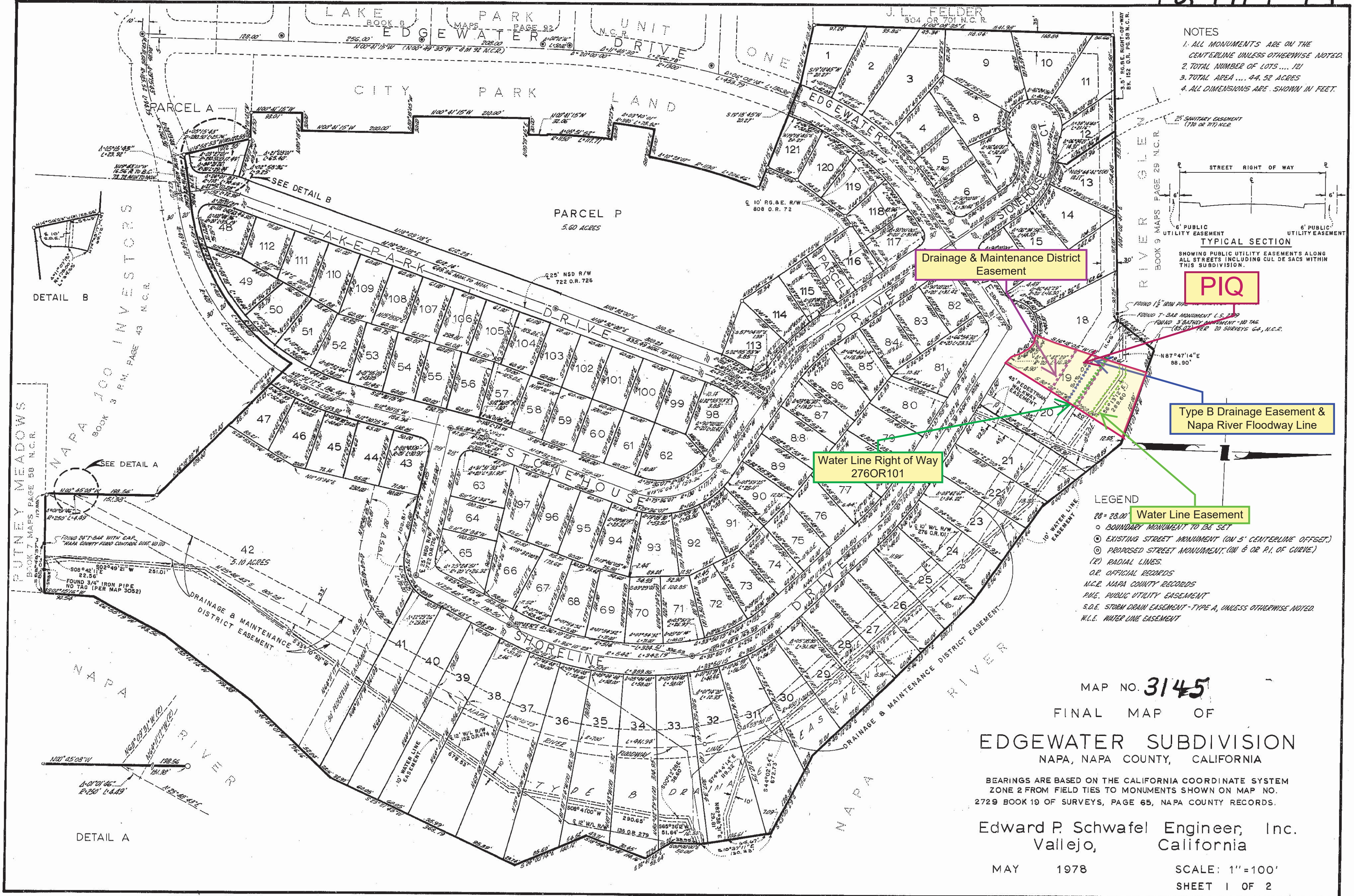


BK. 52
06

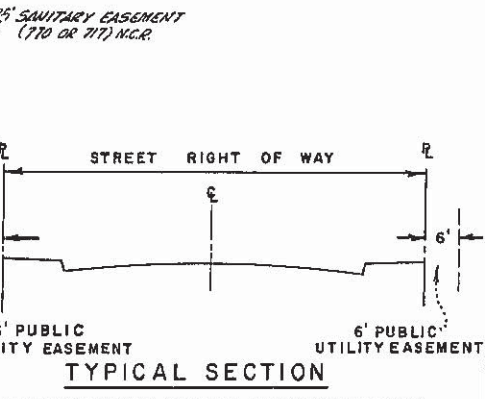
44-30

THIS MAP MAY OR MAY NOT BE A SURVEY OF THE LAND DEPICTED HEREON. YOU SHOULD NOT RELY UPON IT FOR ANY PURPOSE OTHER THAN ORIENTATION TO THE GENERAL LOCATION OF THE PARCEL OR PARCELS DEPICTED, FIRST AMERICAN TITLE COMPANY OF NAPA EXPRESSLY DISCLAIMS ANY LIABILITY FOR ALLEGED LOSS OR DAMAGE WHICH MAY RESULT FROM RELIANCE UPON THIS MAP.

12 RM 17



- NOTES
1. ALL MONUMENTS ARE ON THE CENTERLINE UNLESS OTHERWISE NOTED.
 2. TOTAL NUMBER OF LOTS 121
 3. TOTAL AREA 44.52 ACRES
 4. ALL DIMENSIONS ARE SHOWN IN FEET.



PIQ

Type B Drainage Easement & Napa River Floodway Line

Water Line Right of Way 276OR101

Drainage & Maintenance District Easement

- LEGEND
- 28 = 28.00'
 - BOUNDARY MONUMENT TO BE SET
 - ⊙ EXISTING STREET MONUMENT (ON 5' CENTERLINE OFFSET)
 - ⊙ PROPOSED STREET MONUMENT (ON 6' OR P.I. OF CURVE)
 - (R) RADIAL LINES
 - O.R. OFFICIAL RECORDS
 - N.C.R. NAPA COUNTY RECORDS
 - P.U.E. PUBLIC UTILITY EASEMENT
 - S.D.E. STORM DRAIN EASEMENT - TYPE A, UNLESS OTHERWISE NOTED
 - W.L.E. WATER LINE EASEMENT

MAP NO. 3145

FINAL MAP OF
EDGEWATER SUBDIVISION
NAPA, NAPA COUNTY, CALIFORNIA

BEARINGS ARE BASED ON THE CALIFORNIA COORDINATE SYSTEM ZONE 2 FROM FIELD TIES TO MONUMENTS SHOWN ON MAP NO. 2729 BOOK 19 OF SURVEYS, PAGE 65, NAPA COUNTY RECORDS.

Edward P. Schwafel Engineer, Inc.
Vallejo, California

MAY 1978

SCALE: 1" = 100'
SHEET 1 OF 2