



## CAL FIRE/Napa County Fire Board of Supervisors Presentation



# Chipper Program



[www.countyofnapa.org/firemarshal](http://www.countyofnapa.org/firemarshal)

(707)299-1464



# NAPA COUNTY DEFENSIBLE SPACE FUEL MAPPER

## Napa County Wildfire Fuel Mapper Parcel Report

### Report Contents

This report contains fire hazard related information for the parcel, including maps of the parcel's streams, physical geography, and modeled flame length. Each map provides insight into landscape characteristics that can help assess fuel and fire hazards and can be used to aid in planning fuel treatments and natural resource management. This report is provided for informational purposes only and may not have been prepared for, or be suitable for legal, engineering, or surveying purposes. This report is not intended to replace a formal physical inspection of the parcel, its structures, and surrounds.

### Defensible Space Zones and Vegetation



**LEGEND**     Parcel of Interest     Defensible Space

Napa County Code chapter 8.36 and the Napa County Defensible Space Guidelines set forth defensible space requirements for properties in the unincorporated areas of Napa County and Town of Yountville. The defensible space requirements apply to structures, infrastructure and undeveloped lots and declare that parcels that do not meet the requirements constitute a public nuisance and are subject to penalties.

### Contact Information

Questions or comments? Please contact Napa County Fire Marshal's Office Defensible Space Program (707)-299-1464, [firemarshal@countyofnapa.org](mailto:firemarshal@countyofnapa.org) (<https://www.countyofnapa.org/3134/Defensible-Space-Chipper-Program>)

APN	039-320-015-000
Current Address	1820 MONTICELLO RD
Acres	1.74
Structure Count	2

"Defensible space" is the area around a structure within a minimum of 100-foot radius or to the property line, whichever is less, in which combustible vegetation and other prohibited materials must be treated, cleared, or reduced to slow the spread of fire to and from the structure. Distances can be increased depending on fuel load, fuel type and topography.

There are 3 types of defensible space that are summarized in this report:

1. Defensible space on the parcel of interest associated with structures within the parcel (**Category 1**)
2. Defensible space on the parcel of interest associated with structures on adjacent parcels (**Category 2**)
3. Defensible space on adjacent parcels associated with structures within the parcel of interest (**Category 3**)

**Property owners are responsible for the first two categories.** For example, if a neighboring parcel has structures with a 100-foot buffer that radiates into your property, you are responsible for clearing that defensible space as well as the defensible space around structures within your property. If you have structures on your property whose 100-foot buffer extends into adjacent parcels, your neighbors are responsible for clearing that defensible space on their parcel.

*Note that the structures included in this report are from the data collected between 2019-2020. Some structures may have been affected by recent wildfires and/or construction. Lidar data was collected in 2018.*

Acres of Category 1 Defensible Space	Acres of Category 2 Defensible Space	Acres of Category 3 Defensible Space
1.2 acres	0.0 acres	0.0 acres
Total acres of Defensible Space within 039-320-015-000 (Category 1+2): 1.2 acres		

Defensible Space Within Parcel by 2018 lidar Height Above Ground		
Acres by Height Above Ground	% Total Defensible Space	Example Treatment Recommendation (see resources)
0.17 acres of vegetation >15 ft	14.1% of defensible space	Trees are generally greater than 15 feet in height. Single trees should be well spaced 10 feet apart and limbed up to create 6 feet of vertical clearance from the ground.
0.15 acres of vegetation 1-15 ft	12.1% of defensible space	Shrubs are generally 1-15 feet in height. This stratum also includes tall grasses and short trees. Shrubs and other plants should be a minimum of 4 feet below the bottom of the tree canopy.
0.88 acres <1 ft	73.7% of defensible space	Grass is generally below 1 foot in height. This stratum also includes short shrubs and unvegetated areas. Cut and maintain all annual grasses to 4 inches or less in height.



<https://www.countyofnapa.org/3134/Defensible-Space-Chipper-Program>

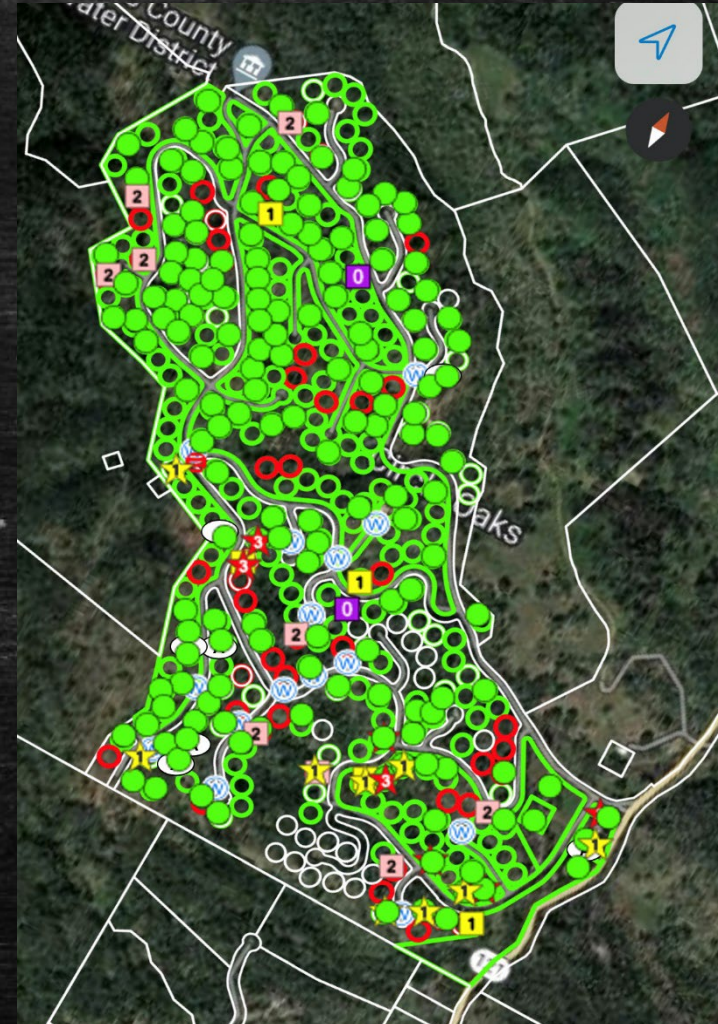
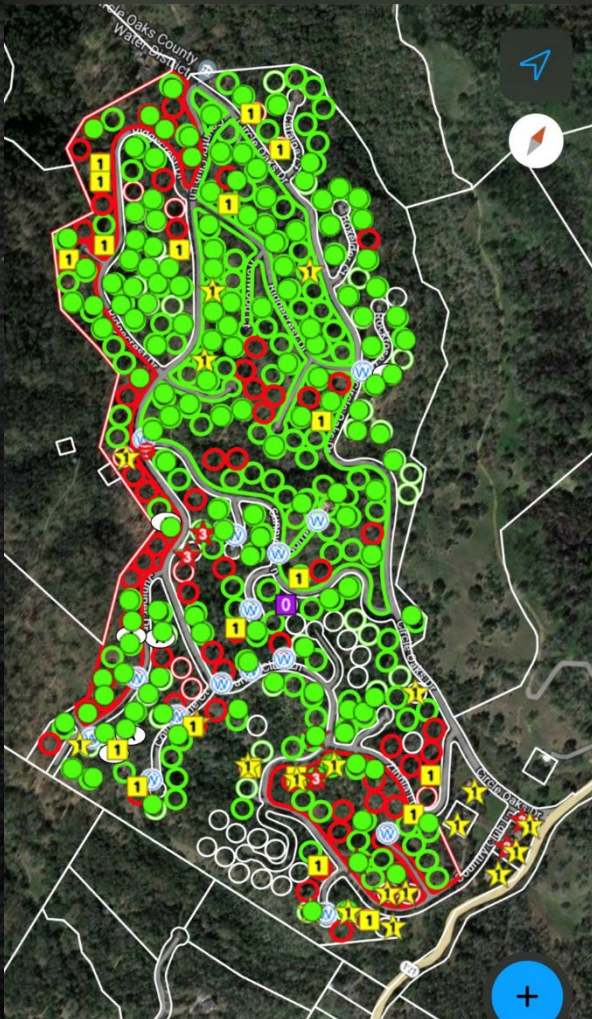


# DEFENSIBLE SPACE INSPECTIONS

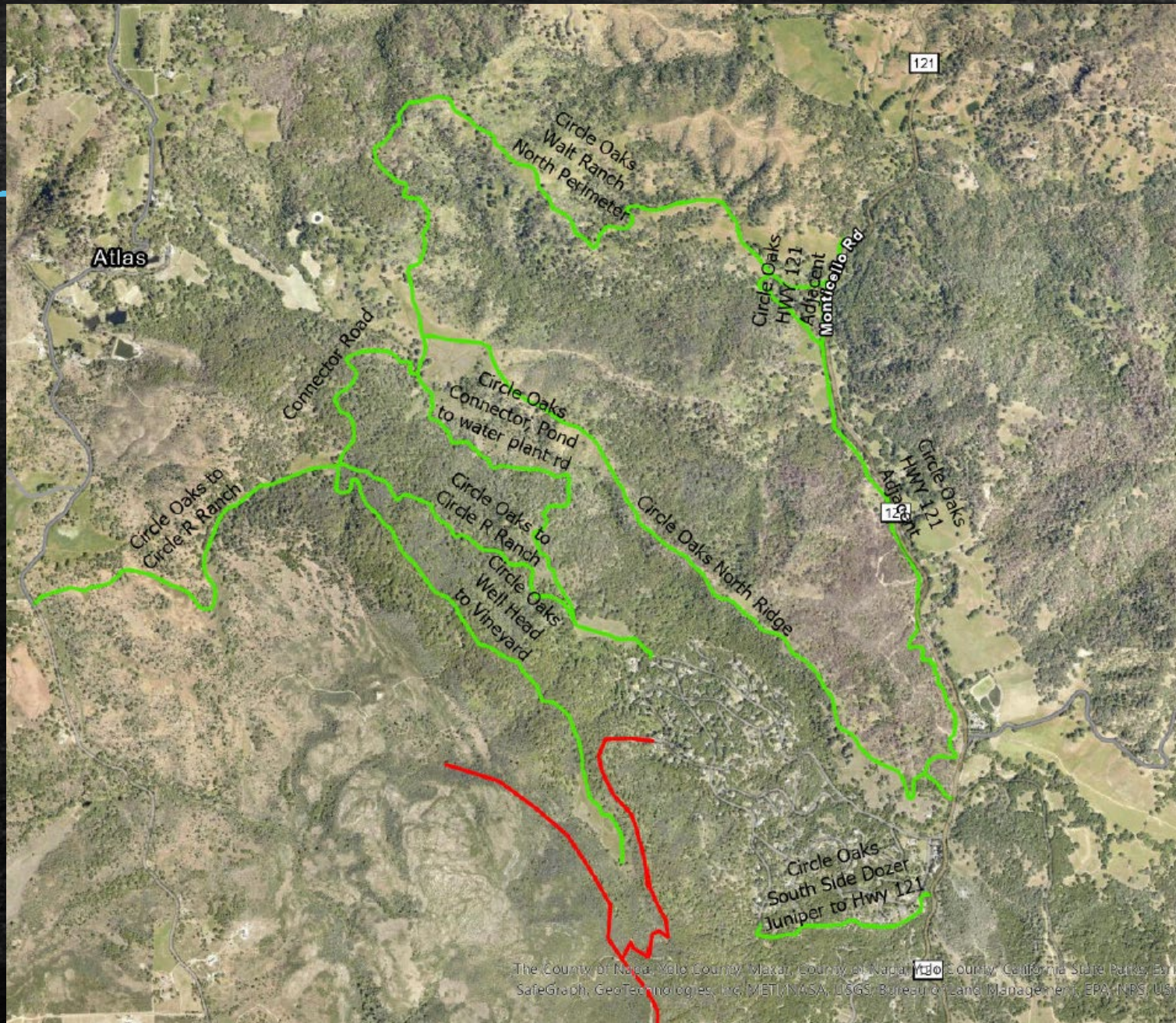




# BUILDING FIRE RESILIENT COMMUNITIES









# BUILDING FIRE RESILIENT COMMUNITIES

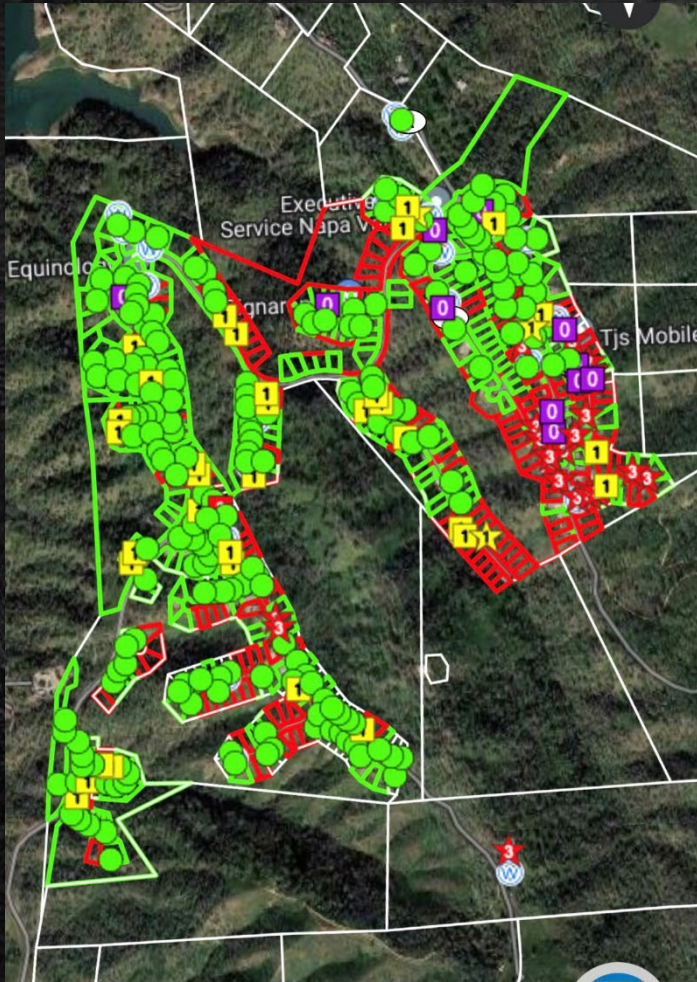




Figure 1. The effect of the number of trials on the number of correct responses. The number of correct responses was significantly higher for the 10-trial condition than for the 5-trial condition. Error bars represent the standard error of the mean.





# TRAINING

---









# EVENTS





# NATIONAL PREPAREDNESS MONTH



It is important that you are prepared **before** wildfire strikes. In an emergency it is easy to become confused or panicked.

Getting Set requires three main preparation actions:

- Creating a Wildfire Action Plan
- Creating an Emergency Supply Kit
- Creating a Family Communication Plan

Preparing these items in advance will help keep you focused and able to act quickly when evacuation is anticipated or needed.

Use this guide to complete these actions to prepare in advance of wildfire.

## READY FOR WILDFIRE INCIDENT APP

Scan the QR code below to access accurate updates about active wildfires near you with our web-based Ready for Wildfire Incident App.

