

# **Vegetation Management**

## **NAPA COUNTY BOARD OF SUPERVISORS**

**December 7, 2021**



# Safety



# Meeting Purpose and Discussion Topics

## MEETING PURPOSE

- Share progress on important vegetation management work in Napa County
- Communicate our customer engagement strategy as we head into 2022

## DISCUSSION TOPICS:

- ✓ **VEGETATION MANAGEMENT  
PROGRESS TO DATE**
- ✓ **CUSTOMER ENGAGEMENT**
- ✓ **RESOURCES**
- ✓ **QUESTIONS**

# 2021 Vegetation Management Progress

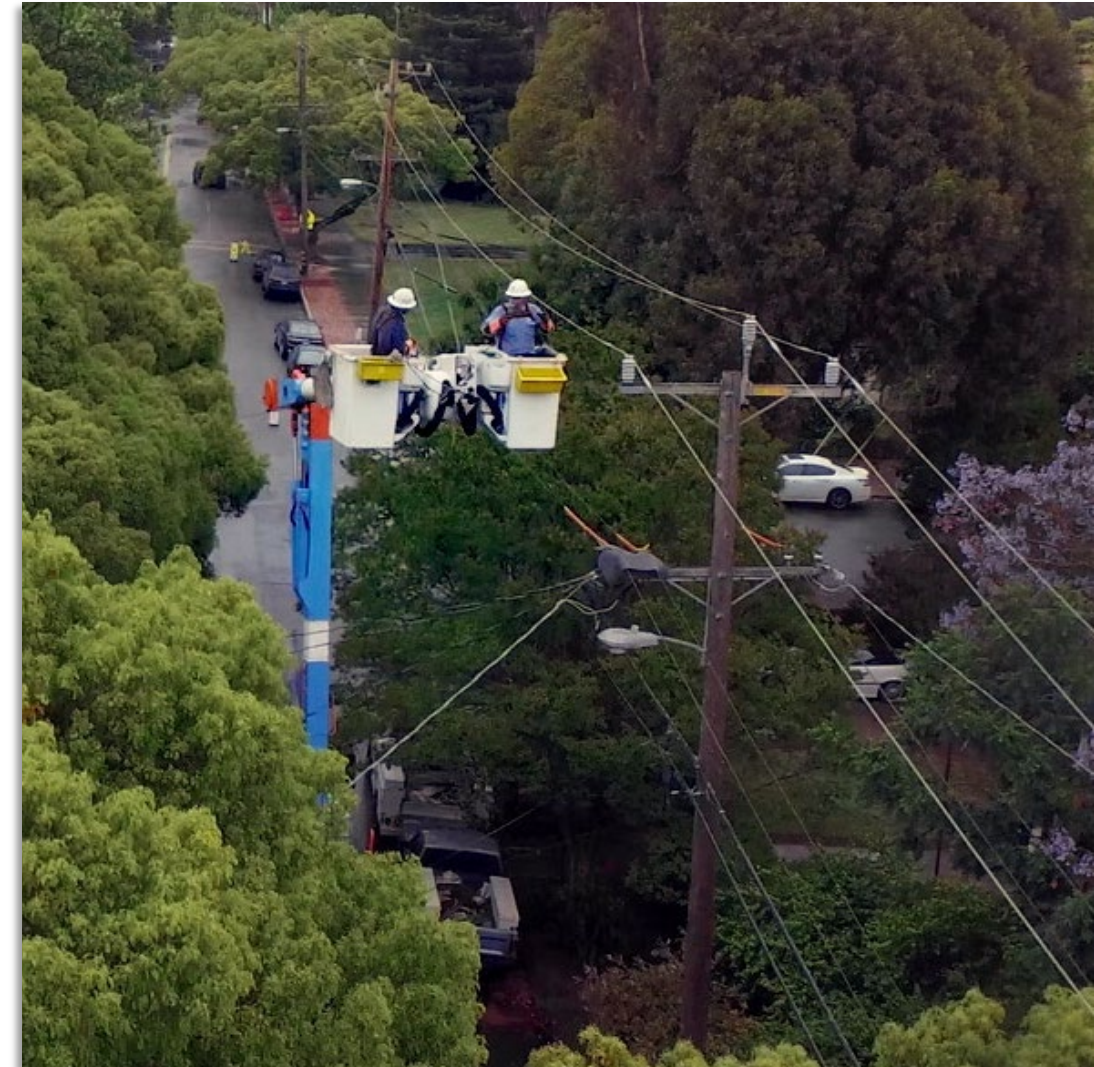


# Vegetation Management

As part of our vegetation management program, we are working with customers and communities to **manage trees and other vegetation located near powerlines that could cause a wildfire or power outage.**

## PG&E's vegetation management program:

- Inspects **approximately 100,000 miles** of overhead powerlines every year
- Prunes or removes **more than 1 million trees** annually
- **Addresses dead, diseased, dying and defective trees** in areas affected by drought and bark beetles





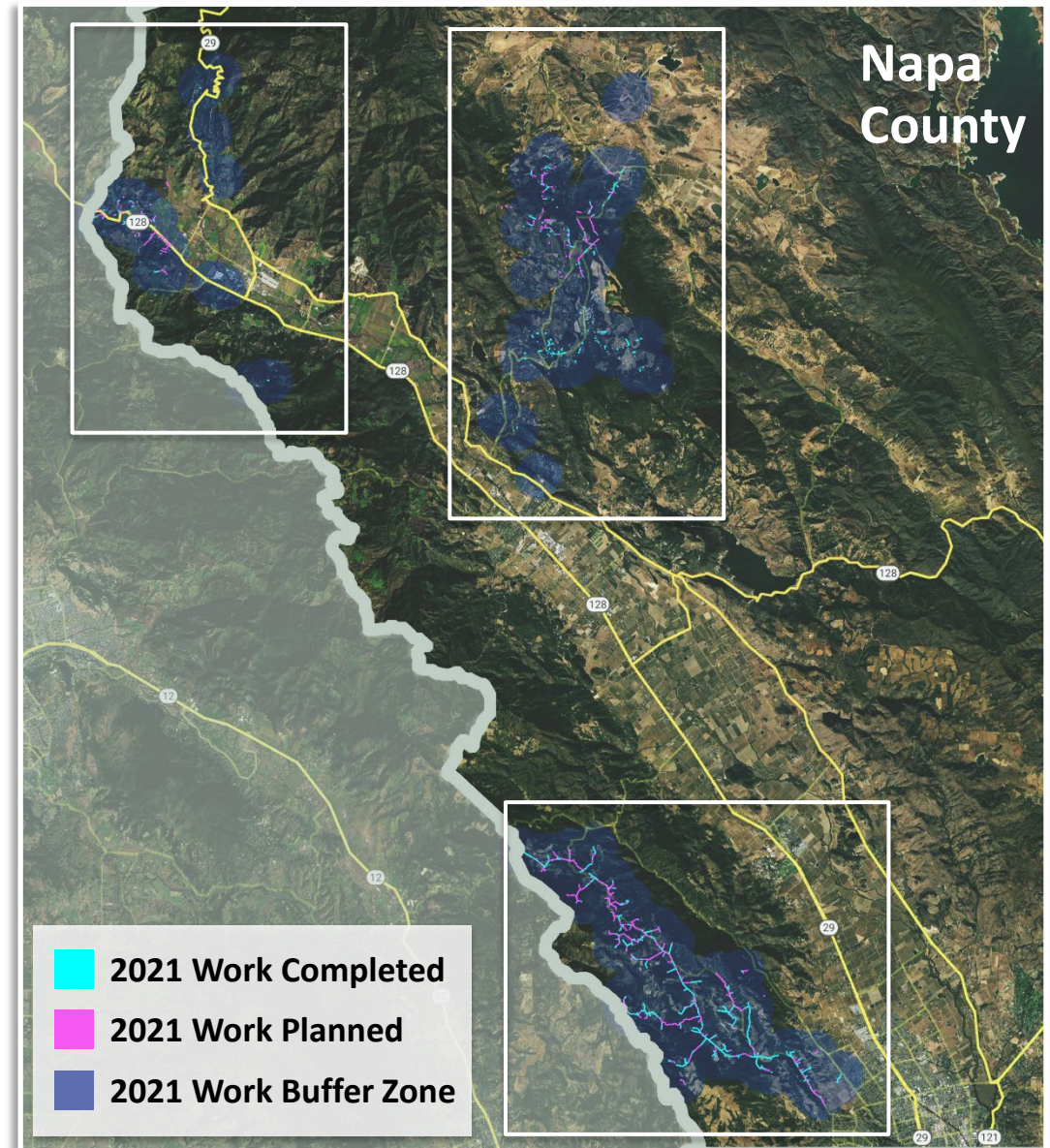
# Enhanced Vegetation Work in Napa County

 **2021 PLANNED** **27 LINE MILES**

 **2021 COMPLETED** **23 LINE MILES**

Data rounded; through 11/21/2021

**We are exceeding state vegetation and fire safety standards** by addressing vegetation that poses a higher potential for wildfire risk to maximize the safety of our customers and communities.



# Customer Engagement



It's important that our **customers and communities are informed** about our important vegetation management work.

We are committed to informing customers **before, during and after the work** beginning in 2022.







# Customer Engagement Materials In Progress

## General Materials

- ✓ Mailer

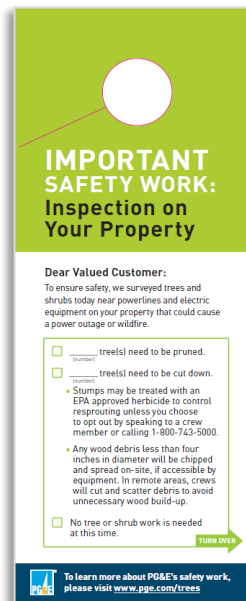
## Pre-Inspection Materials

- ✓ Door Hangers
- ✓ Automated Calls
- ✓ Postcards

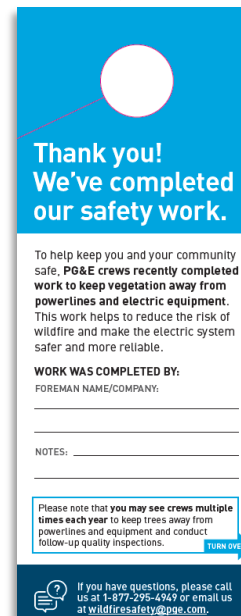
## Work In-Progress/ Work Completed Materials

- ✓ A-Frame Signage
- ✓ Door Hangers
- ✓ Automated Calls
- ✓ Postcards

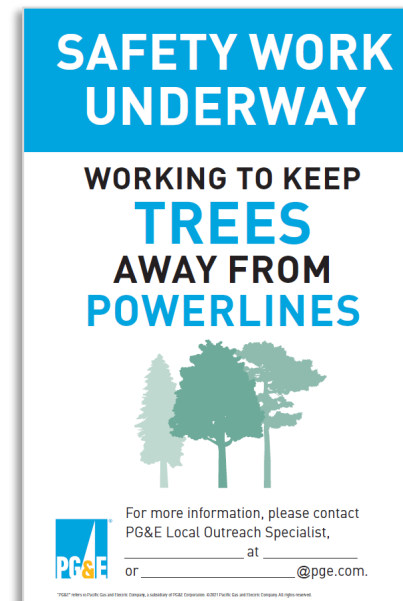
### Pre-Inspection Door Hanger



### Tree Work Complete Door Hanger



### A-Frame Signage



### Tree Work Postcard



### Tri-Fold Mailer



# Resources

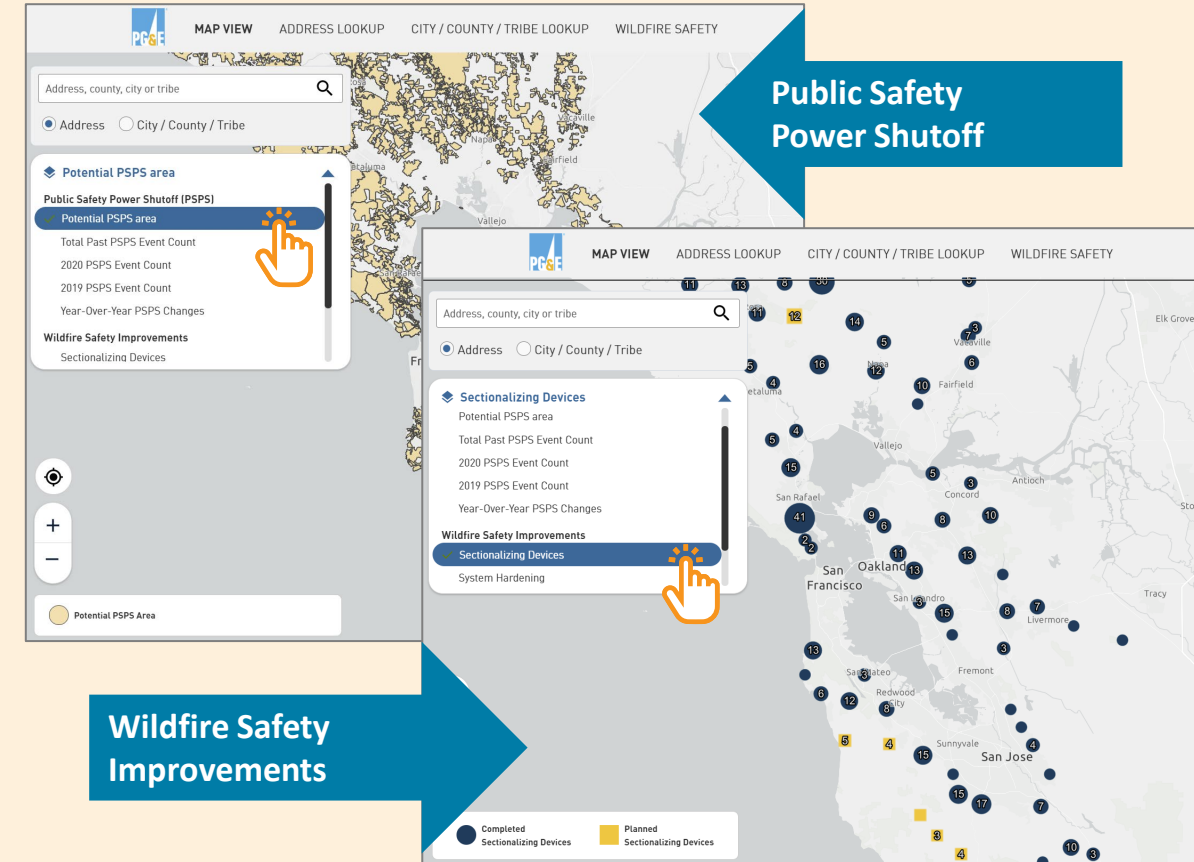




Encourage customers to  
**contact us directly** with  
questions at  
[wildfiresafety@pge.com](mailto:wildfiresafety@pge.com)  
or **1-877-295-4949**

**NEW**

**See system  
improvements  
in YOUR  
community**



Available at: [pge.com/customerpspsplanningmaps](https://pge.com/customerpspsplanningmaps)

# Questions

