

Planning, Building & Environmental Services



Napa County General Plan Update (GPU)

Board of Supervisors Hearing | April 14, 2026

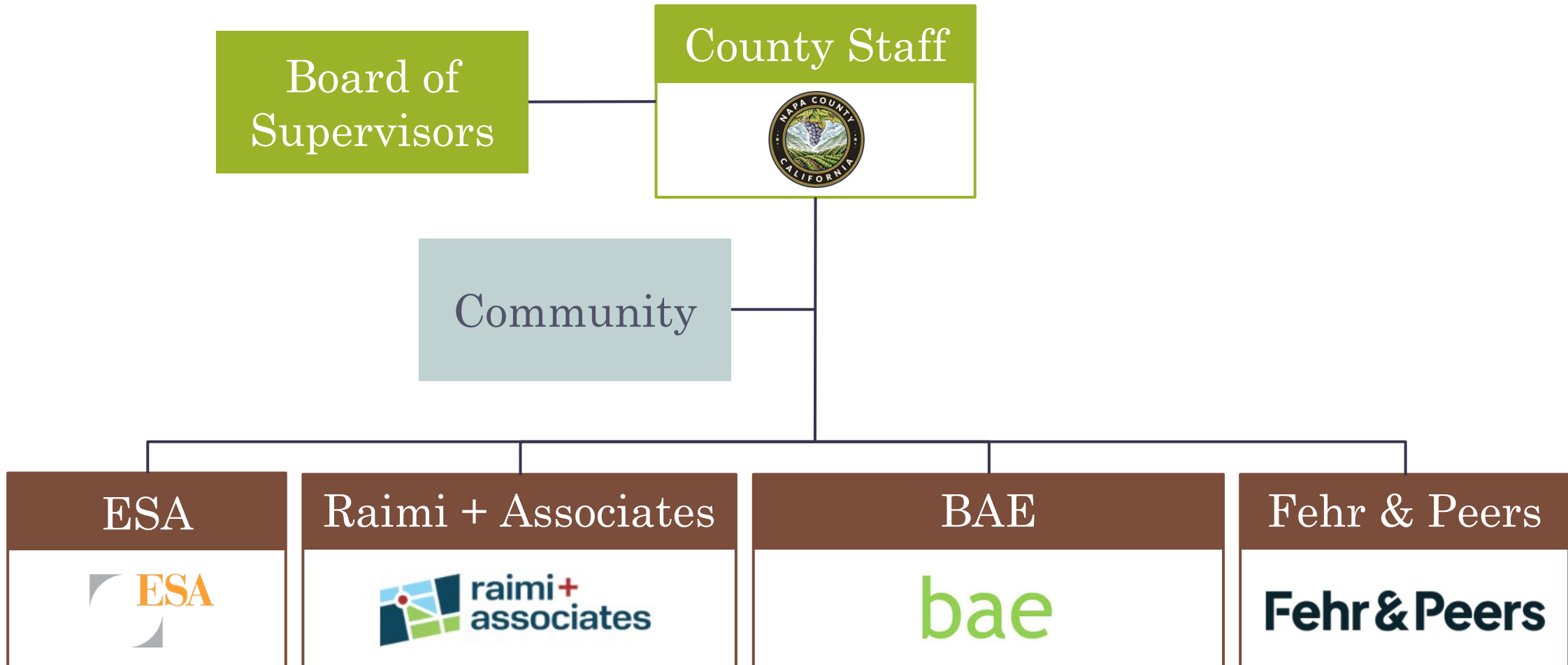


Agenda

- Provide background and Baseline Data Report status update
- Review what we heard and the direction from the Board in December
- Summarize how the scope responds to Board direction as well as highlight major milestones within the process
- Request approval of contract amendment to initiate General Plan Update (GPU)



General Plan Team



Background and BDR Status Update

- **Baseline Data Report (BDR) began February 2025**
 - Provides a comprehensive assessment of existing conditions and regulations in the County
 - Incorporates new scientific data, community insights, and best-practice methodologies
- **Status Update**
 - Public Review comment period ended April 10th
 - Currently preparing Final BDR and Executive Summary
 - Will return to Board in June 2026 for Final BDR presentation and adoption



General Plan Update | Board Direction

At the December 16 Board Meeting, the project team gave an overview of the scope and approach to the General Plan update. The Board provided the following direction:

- Provide **inclusive and accessible community engagement**
- Integrate **health and equity** throughout the GPU
- Coordinate with **regional planning** efforts
- Provide **flexibility and innovation** in process and plan structure





How Scope Responds to Board Direction



Emphasis on Inclusive and Accessible Engagement

- 🎯 Early, targeted outreach
- ♿️ Publicly accessible activities
- 💬 Spanish interpretation
- 💬 Other languages as needed
- 📍 Social Pinpoint
- 🏠 Broad and Focused Engagement
- 👂 Emphasis on listening
- ⚙️ Professional facilitation
- 👥 Smaller group formats
- 👥 Flexible meeting structures



New Task 2.5: Initial Outreach and Engagement

- Focuses on meeting people where they are:
 - Town halls in each Supervisorial District
 - Group stakeholder meetings
 - Participation in community events
 - Direct outreach to residents, businesses, etc.
- Purpose-driven with focus on community values:
 - Vision for the future
 - Community challenges
 - Community priorities



New Topic-Specific Workshops (TSWs)

- New TSWs replace Thematic Advisory Groups (TAGs)
- Broadens participation and enhances transparency
- Aims for inclusivity and avoids barriers to participation
- Retains focused, informed, topical discussion
- Engages both experts and interested participants
- Structured to welcome diverse perspectives



Community-Wide Workshops (CWWs)

- Designed to provide accessible workshops for community members who do not participate in TSWs
- Focus on broader community perspectives and values
- Will help inform GPU vision and priorities



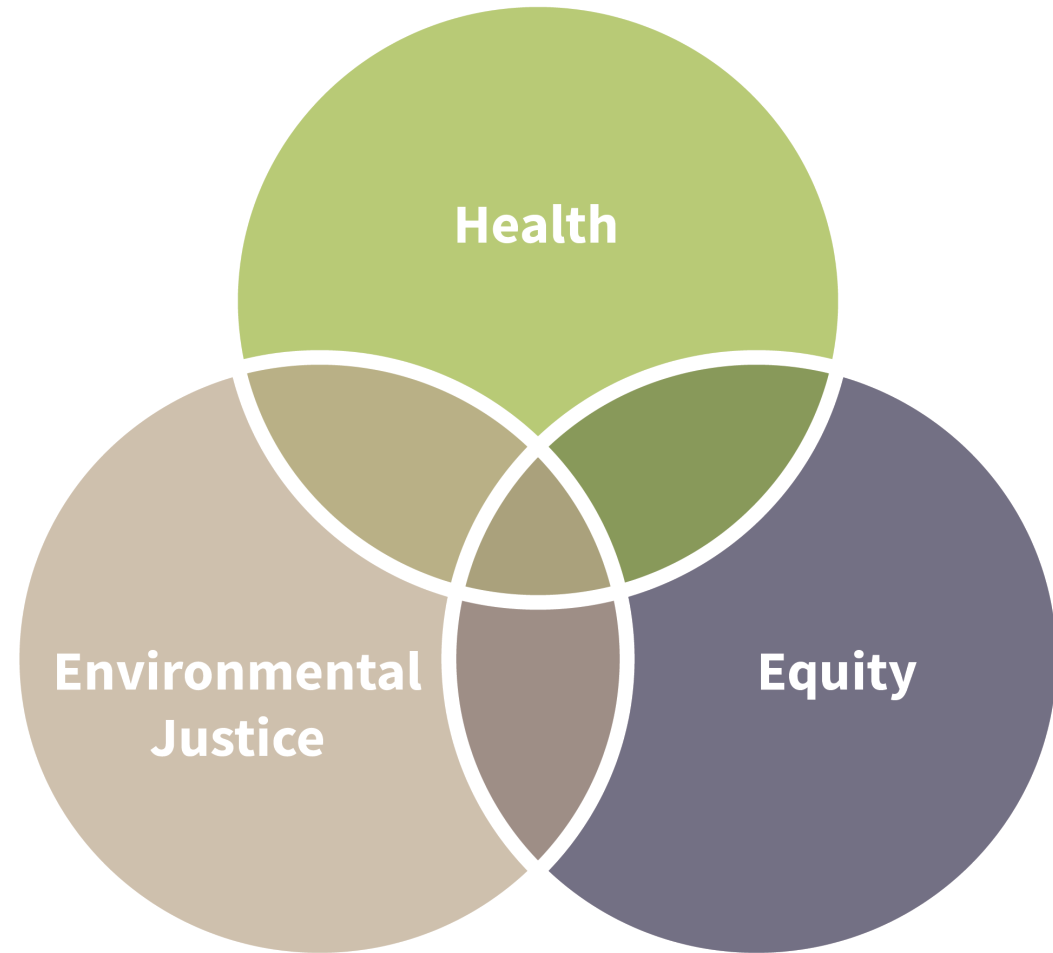
Public Agency Working Group (PAWG)

- Complements public workshop engagement
- Ensures that technical and interagency considerations are addressed
- Consists of County staff and representatives from other public agencies
- Enables agency input at key milestones



Health and Equity Global Framework

- New Health in all Policies (HiaP) approach
- Holistic and cross-cutting approach to governance and decision-making
- County Public Health support and involvement



Regional and Resource Planning Coordination

- **Baseline Planning Considerations:**
 - Climate variability
 - Wildfire risk
 - Water security and resilience
 - Economic transition
- **Alignment with County and regional initiatives, such as:**
 - Regional Climate Action and Adaptation Plan (RCAAP)
 - Groundwater Sustainability Plan (GSP)
 - Adjacent habitat conservation
 - Shoreline adaptation planning initiatives



Flexibility and Innovation

- Flexibility in organization and naming of Elements with Board Discussion at the Visioning Stage
- Innovative engagement tools
- Technology investments to support forward-thinking, community-driven GPU

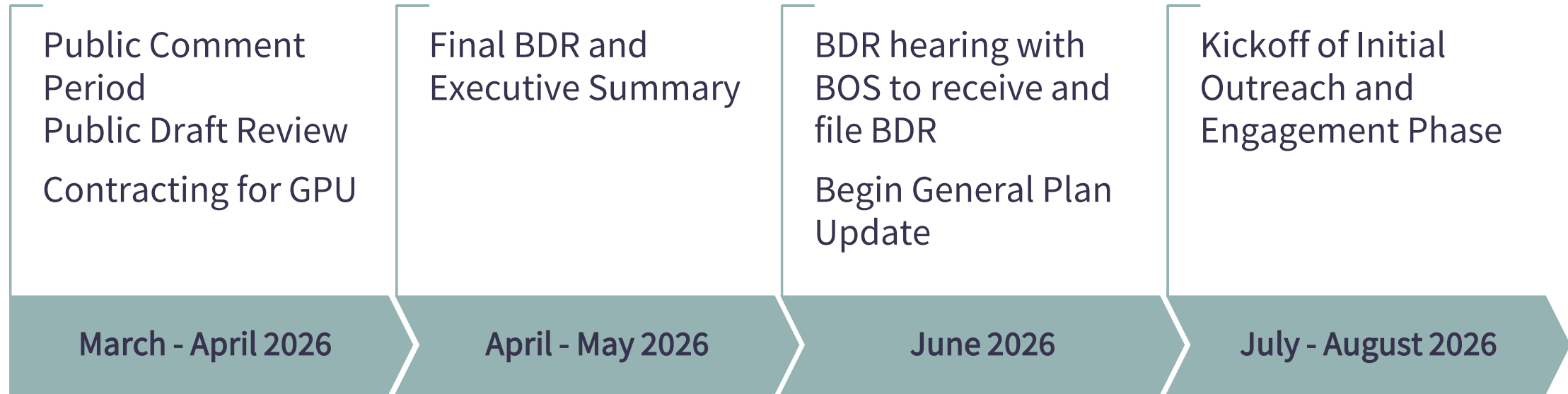




Next Steps



Next Steps for BDR and GPU





Requested Action for Board



Requested Action

Approve and authorize Amendment No. 1 to Agreement No. 250315B with Environmental Science Associates (ESA) to add the scope of work for the General Plan Update and related Environmental Impact Report for the amount of \$4,800,110 with an effective date of April 14, 2026, with work anticipated to commence in summer 2026 upon completion of the BDR.



Thank you



@countyofnapa

