

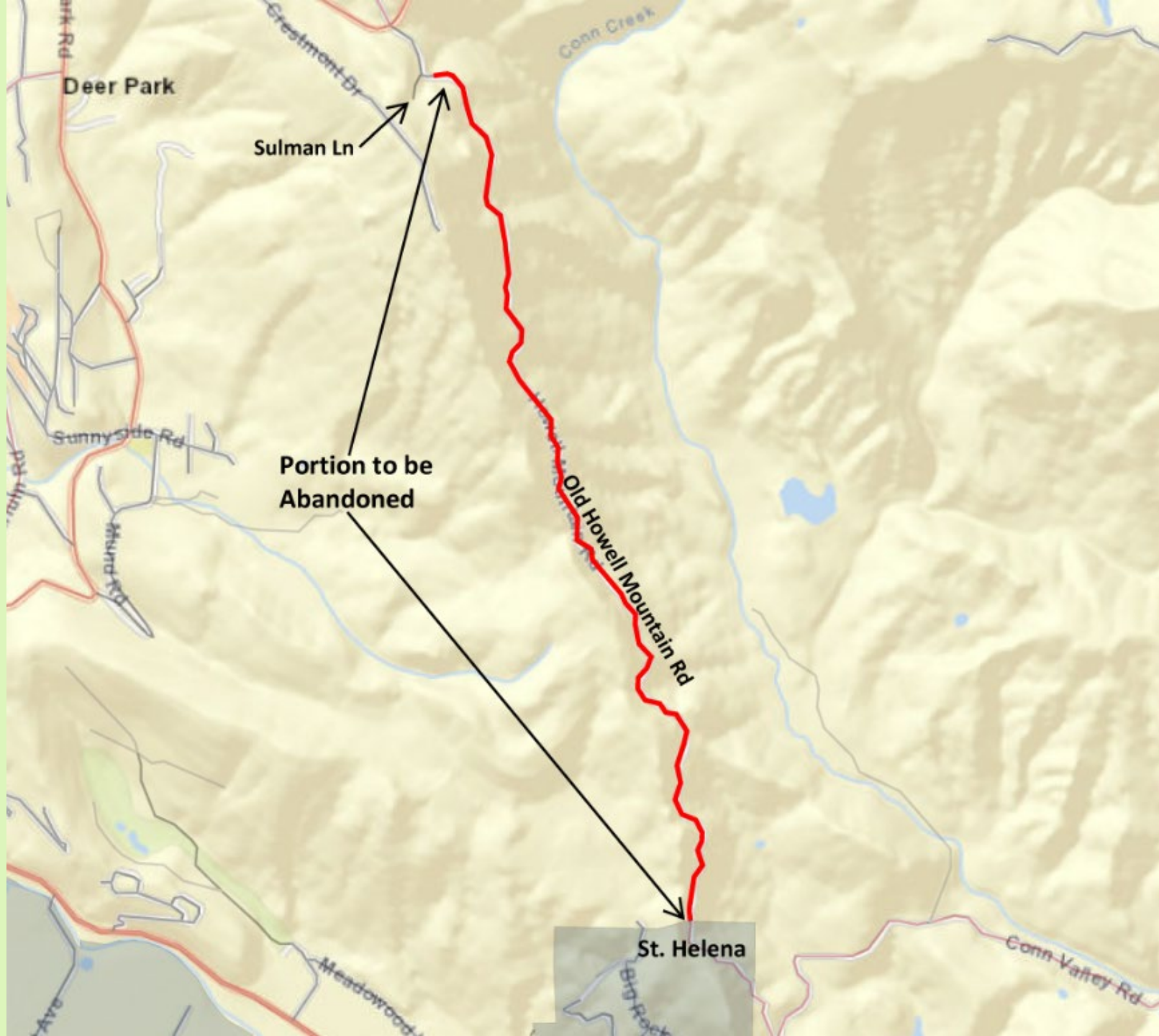
A topographic map of the Old Howell Mountain area, showing contour lines, roads, and landmarks. The map is overlaid with a grid of red dashed lines. A central text box contains the following information:

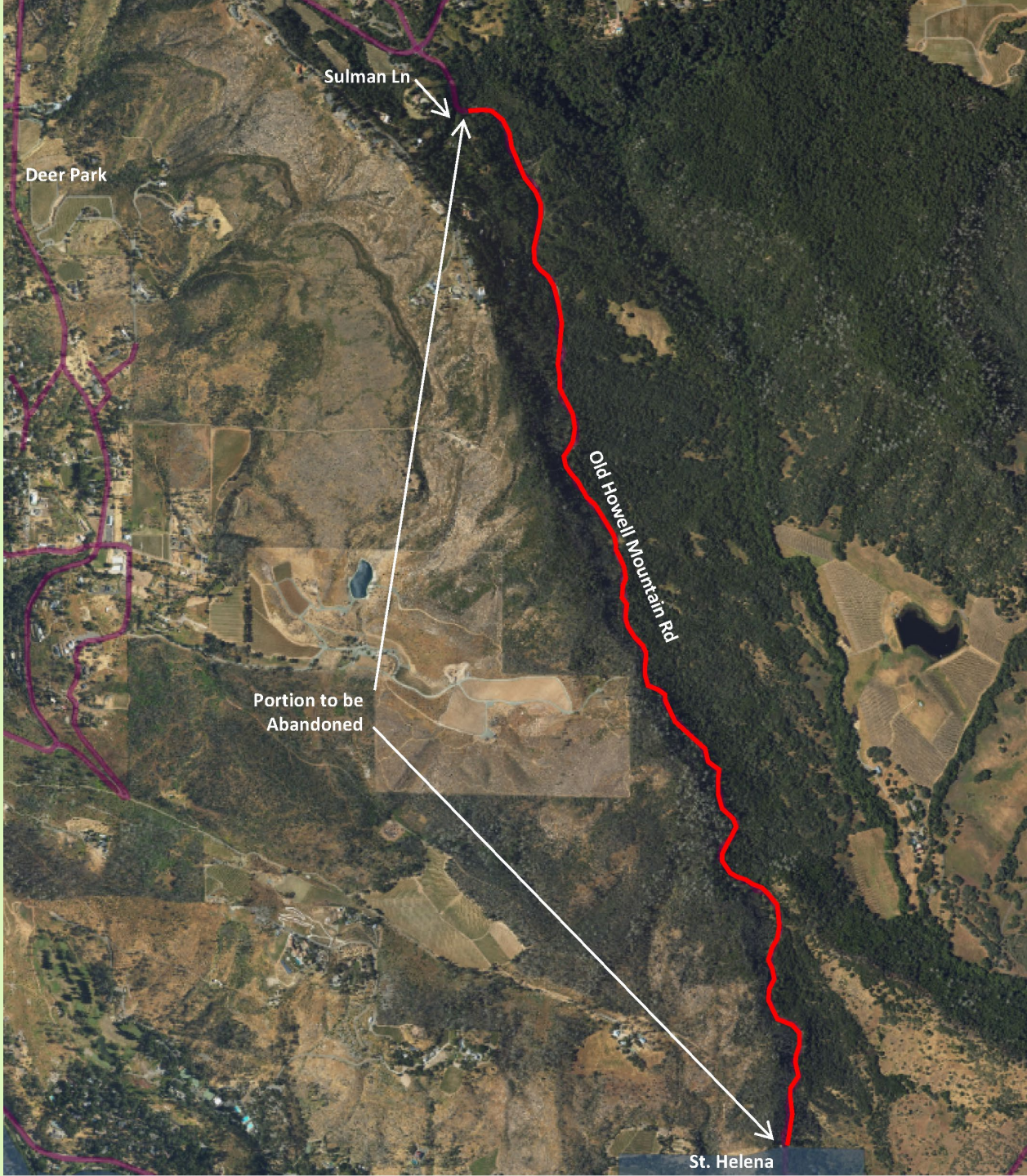
-Public Hearing- Old Howell Mountain Road Abandonment

September 23, 2025

Department of Public Works

Steve Lederer, Director





Sulman Ln

Deer Park

Portion to be Abandoned

Old Howell Mountain Rd

St. Helena