

NAPA COUNTY'S TOBACCO MASTER SETTLEMENT AGREEMENT (MSA) FUNDING RECOMMENDATIONS

Board of Supervisors

June 4, 2024



NAPA COUNTY
Health & Human
Services Agency



MSA BACKGROUND

- For over two decades, the Board of Supervisors (Board) has made the County's MSA funding available to community-based providers to help support community health and our safety-net services
- Management of the MSA Grant process has been delegated to Health and Human Services Agency (HHS) since 2006
- Priority to leverage, braid, and maximize available funding in strategically meeting our community health priorities (e.g., over last two years, found other funding for historically MSA-funded services and ran a parallel MSA/MHSA process expanding MSA availability)



MSA GRANT FUNDING: ALIGN WITH CHA & NOAA PRIORITY AREAS

- Community Health Assessment (CHA) and the County and HHSA sponsored Napa Older Adults Assessment (NOAA)
- Unique opportunity to align, braid, leverage funding to address the emerging priorities from our CHA and NOAA
- Projects/Programs/Services funded through MSA (as well as Mental Health Services Act (MHSA) and Opioid Settlement Funds (OSF) = Strategies for our 3-year Community Health Improvement Plan (CHIP)



COMMUNITY HEALTH ASSESSMENT (CHA) PRIORITY AREAS

Recap from April 23, 2024

Housing
Access to Health Services
Racial Equity & LGBTQ Inclusion
Economic Stability
Behavioral Health



HOUSING



ACCESS TO
HEALTH SERVICES



ECONOMIC
STABILITY



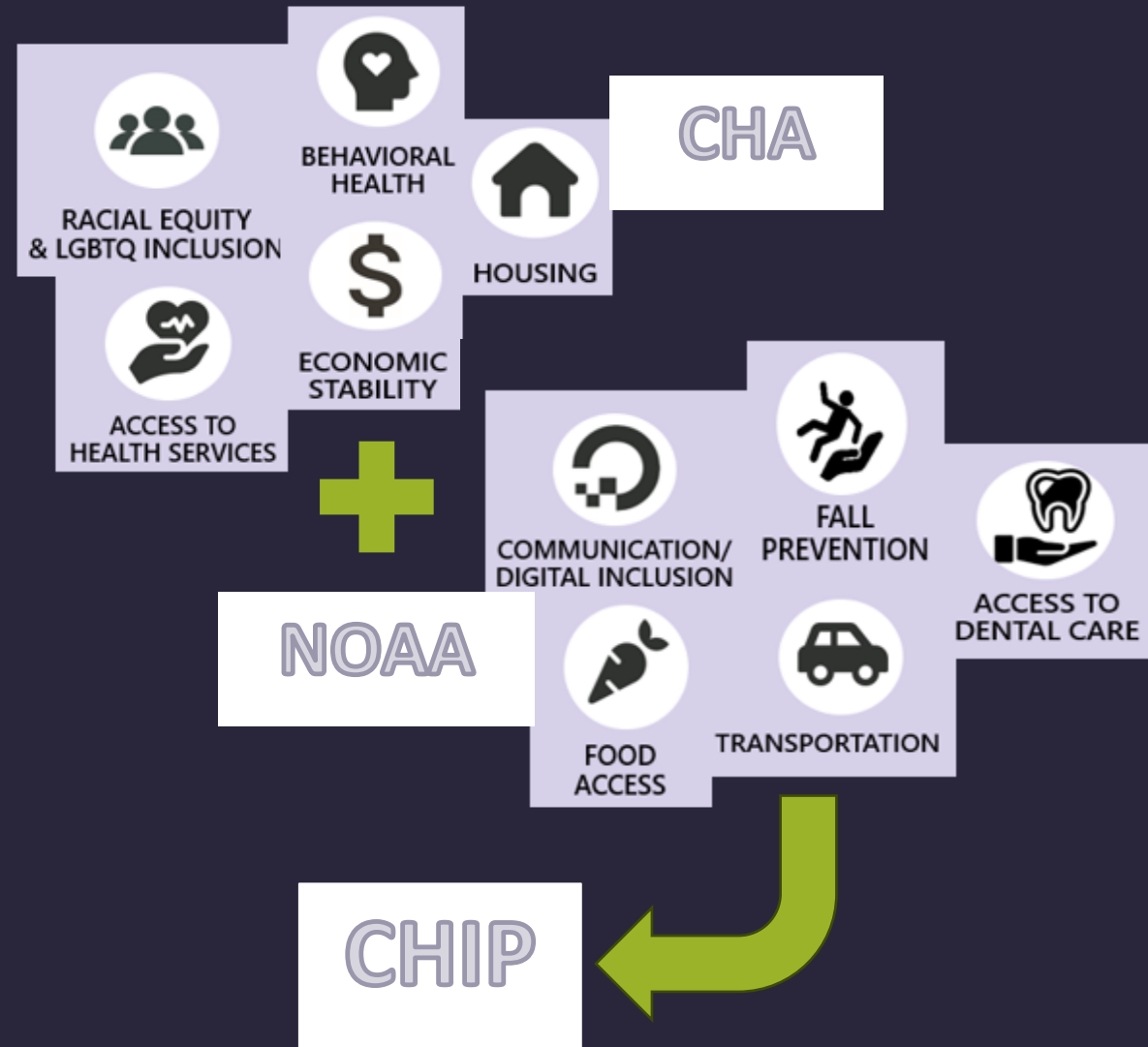
RACIAL EQUITY
& LGBTQ INCLUSION



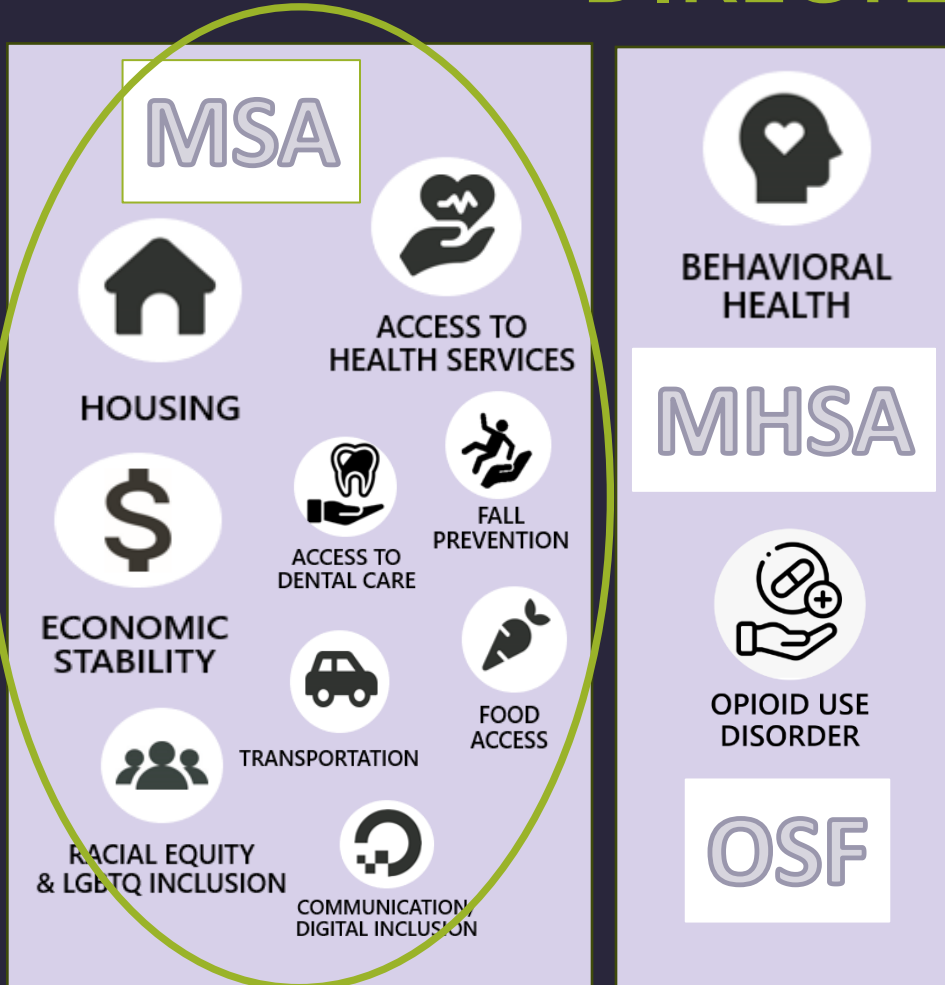
BEHAVIORAL
HEALTH



CHA & NOAA PRIORITY AREAS → DRIVE OUR COMMUNITY HEALTH IMPROVEMENT PLAN (CHIP) OBJECTIVES



MSA GRANT FUNDING: DIRECTED @CHIP OBJECTIVES



- \$5M in MSA Grant Awards → Targets our CHIP Objectives in 4 of the 5 Priority Areas: 1) Access to Health Services; 2) Housing; 3) Economic Stability; and 4) Racial Equity & LGBTQ Inclusion

- PLUS \$4M in Mental Health Services Act (MHSA) and \$840K in Opioid Settlement Funds (OSF) RFPs → targets our CHIP Objectives in the Behavioral Health Priority Area (also aligns with the MHSA 3-Year Plan and Napa Opioid Safety Coalition (NOSC) Strategic Plan)

- Funded Programs/Services = CHIP Strategies



MSA GRANT FUNDING: DIRECTED @CHIP OBJECTIVES

HOUSING

- Increase housing stability and affordability for Napa County residents and workers.
- Increase access to stable housing and a range of support services for those experiencing homelessness and those who are insecurely housed.
- Increase both the availability and appeal of senior living communities as an option for cost-effective and supportive housing for older adults.
- Increase the feasibility of aging in place for older adults living in Napa County.

ACCESS TO HEALTH SERVICES

- Increase dental care access with a focus on low-income community members who identify as Black, Indigenous, People of Color (BIPOC), including children and older adults.
- Develop approaches to fall prevention education among older adults that reduce access to barriers and increase opportunities for developing social supports.
- Develop policies and programs that expand infrastructure to bring more medical professionals and related health services to Napa County.
- Assess and identify transgender care service gaps, and specific service needs, in order to increase access to local transgender care.
- Increase health and social service system navigation support, with a focus on undocumented individuals and mixed status households.

RACE EQUITY & LGBTQ INCLUSION

- Increase access to information and services by reducing language and cultural barriers.
- Identify and amplify opportunities for staff diversity training across sectors.
- Increase inclusion and belonging among the Napa County LGBTQ Community.
- Increase inclusion and belonging among older adults who identify as low income and/or Black, Indigenous, People of Color (BIPOC).
- Identify and amplify tools for system analysis to determine if policies and programs result in disparate outcomes for community members who identify as Black, Indigenous, People of Color (BIPOC).

ECONOMIC STABILITY

- Increase access to fresh, nutritious, and culturally and/or medically appropriate food among low-income and Latine residents of Napa County following recommendations from the 2018 Emergency Food System Study.
- Develop a food systems initiative with a backbone agency with authority and funding to connect resources.
- Identify and amplify non-traditional methods of consistent follow-up for community members accessing emergency food systems that allow for warm hand-offs to other services as needed.
- Address transportation issues that create barriers to accessing food, healthcare, employment, education, and other basic needs, especially for older adults, youth, and community members who identify as low income, and/or Black, Indigenous, People of Color (BIPOC).
- Increase economic stability for community members experiencing life transitions, such as those exiting foster care, transitioning to a fixed income, or becoming new parents.



NON-MSA GRANT FUNDING – MHSA & OSF: DIRECTED @5TH CHIP OBJECTIVE

BEHAVIORAL HEALTH

Suicide prevention and early intervention services

- *Collect, review, and share data to better understand and address the problem and impact of suicide in our county.*
- *Increase early identification of suicide risk and connection to services for youth and older adults.*

Prevent and effectively treat substance use disorders

- *Increase access to prevention and treatment resources for opioid use disorder.*
- *Increase understanding of the risks of substance use, especially among youth.*
- *Provide education and assistance in implementing policies that reduce exposure to tobacco products and secondhand smoke.*
- *Provide education and assistance in implementing policies and programs that increase safe medication storage and disposal.*

Mental health and wellbeing

- *Increase mental wellbeing among Latine, BIPOC, and low-income older adults with an approach that encompasses culturally competent strategies to support mental, physical, financial, and social wellbeing.*
- *Increase mental wellbeing and enhance access to mental health services, particularly bilingual and bicultural services, for children and their families, youth, and older adults in Napa County.*
- *Identify and amplify non-traditional methods of mental wellness support, that address mental health needs and reduce stigma around accessing services.*



MSA GRANT FUNDING RECOMMENDATIONS

- 27 applications totaling \$12.6M in requests for \$5M available
- Result = 17 proposals recommended out of 27
 - @95% – 70% – 50% of funding requested
- Distribution across 4 of the 5 CHA priority areas
- “New” MSA awards = \$5M over 3 years (Exhibit A):
 - FY 24-25 = \$1.4M
 - FY 25-26 = \$1.8M
 - FY 26-27 = \$1.8M



ACCESS TO HEALTH SERVICES

ECONOMIC STABILITY

RACE EQUITY & LGBTQ INCLUSION

HOUSING

BEHAVIORAL HEALTH

1	COMMUNICARE OLE HEALTH Dental Access Program NOAA	\$309,270
10	NAPA VALLEY EDUCATION FOUNDATION Newcomers Pathway Program	\$255,000
14	PROVIDENCE COMMUNITY HEALTH Information & Assistance NOAA	\$375,000
16	SHARE THE CARE NOAA Yvonne's Front Porch & Transitional Fall Prevention	\$157,500
Requested		\$ 3,716,885
Recommended		\$ 1,096,770

2	CANV Food Bank & Meals on Wheels NOAA	\$300,000
3	COMMUNITY RESOURCES FOR CHILDREN Economic Stability for Childcare Providers	\$454,830
4	NAPA FARMERS MARKET Local Food Systems Initiative NOAA	\$244,238
5	FEEDING IT FORWARD Food Recovery Program NOAA	\$460,985
7	MOLLY'S ANGELS Molly's Angel's Transportation NOAA	\$307,148
8	ParentsCAN Family Stability Program	\$173,263
15	PUERTAS ABIERTAS NOAA Feeding our Families	\$57,000
Requested		\$4,503,520
Recommended		\$1,997,464

9	NAPA VALLEY COMMUNITY ORGANIZATIONS ACTIVE IN DISASTER (COAD) Community Liaisons and Cultural Hubs to Promote Language Inclusion & Belonging NOAA	\$254,965
12	ON THE MOVE LGBTQ School Support Program	\$356,775
Requested		\$1,295,089
Recommended		\$611,741

6	GREATER NAPA VALLEY FAIR HOUSING CENTER Displacement & Homelessness Prevention NOAA	\$237,500
11	NEWS Domestic Violence Housing First NOAA	\$525,000
13	ON THE MOVE Napa Housing Stabilization Program NOAA	\$187,205
17	UP VALLEY FAMILY CENTERS Increasing Housing Stability & Preventing Homelessness in UpValley NOAA	\$344,050
Requested		\$3,064,527
Recommended		\$1,293,755

ALDEA	\$500,800
COPE FAMILY CENTER	\$1,023,589
MENTIS	\$940,522
MICHAEL LEONARDI FOUNDATION	\$254,820
MOLLY'S ANGELS	\$288,000
NAPA VALLEY EDUCATION FOUNDATION	\$180,000
ON THE MOVE	\$411,318
ParentsCAN	\$133,466
PLANNED PARENTHOOD NORTHERN CA	\$305,536
PROVIDENCE QUEEN OF THE VALLEY	\$555,327
UP VALLEY FAMILY CENTERS	\$271,590
Opioid Settlement Funds (OSF)	\$840,000
Mental Health Services Act (MHSA)	\$4,024,967



PRIOR-YEAR MSA GRANT AWARDS

(THAT CONTINUE FOR
FISCAL YEARS 24/25
AND 25/26)

= \$1.8M TOTAL

MSA PRIOR YEAR (EXISTING) GRANT AWARDS			
Organization	Program	FY 24/25	FY 25/26
Catholic Charities	Jefferson Supportive Housing	\$34,180	
Catholic Charities	Rainbow House Family Shelter	\$35,241	
Catholic Charities	Napa Nightingale	\$68,235	\$52,712
Providence Community Health	Community-Based Health Home	\$144,765	
Providence Community Health	Information & Assistance*	\$138,664	
Cope Family Center	Feeding Families	\$37,500	\$37,500
Molly's Angels	Senior Services Transport/Care Calls*	\$87,582	
NEWS	Domestic Violence Housing First *	\$185,297	
OLE Health	Dental Care Coordination*	\$71,734	\$71,734
On The Move	Income for Foster Youth	\$130,000	
Planned Parenthood	Increasing Access to STI Care	\$96,328	\$96,282
Puertas Abiertas	Feeding our Families*	\$42,750	
Providence QVMC	Care Manager for ECM Clients	\$114,944	
St. Helena Hospital	Food Distribution/Senior Well-Being	\$90,000	\$90,000
Share the Care	Donation Center*	\$50,000	
UpValley Family Center	Up Valley Homeless Prevention*	\$108,500	
TOTAL		\$1,435,720	\$358,228



CONCLUSION

Questions/Comments

Requested Action → Approve MSA Grant Funding Recommendations
#s 1 through 17
(Exhibit A)



CONCLUSION

Thank you to the Napa County Board of Supervisors
for the Sustained Commitment of Discretionary Funding to Support
Health and Well-Being in our Community

Thank you to the HHSA Staff, Review Panels,
and our Community Partners



NAPA COUNTY
Health & Human
Services Agency

