

The background of the slide is a satellite map of Napa County, California. It shows the Napa River winding through the landscape, connecting the inland hills to the San Francisco Bay. The terrain is a mix of brownish hills, green agricultural fields, and urban areas. The bay is visible on the left side of the image.

Regional Shoreline Adaptation Plan

An implementing project of **BAY ADAPT**

Resilient Napa Shoreline: The Role of Regional Shoreline Adaptation Plans

Summer 2024

No matter where you live, shoreline flooding will impact everyone in the Bay Area

What's at risk? (40-100 years)

5 million
daily highway
vehicle trips

60,000 daily
rail commuters

28,000 socially
vulnerable
residents

13,000 existing
housing units

104,000
existing jobs

20,000 acres
of depressional
wetlands,
lagoon and tidal
marsh habitat

70,000 new,
planned housing
units

85,000 new,
planned jobs

12 wastewater
treatment plants



**2/3 of
California's sea
level rise
impacts will
be felt in the
Bay Area**

No matter where you live,
shoreline flooding will
impact everyone in the
Bay Area

How Much Will it Cost?

Adaptation Needs

\$110 billion¹

Estimated cost of sea level rise adaptation through 2050 (in Year of Expenditure dollars)

- **\$52 billion:** Estimated cost for known or planned projects
- **\$54 billion:** Estimated placeholder cost for areas with adaptation needs
- **\$3 billion:** Estimated additional sediment management needs³

Cost of Inaction

\$230+ billion²

Estimated value of a subset of assets at risk through 2050

**The cost of inaction is far higher than the cost of adaptation.
We stand to lose much more if we do not act**

¹ In year of expenditure (YOE) dollars. ² In 2022 dollars. ³ Estimate developed by BCDC and SFEI analysis.

Napa County Highlights

American Canyon Wetlands Restoration Project



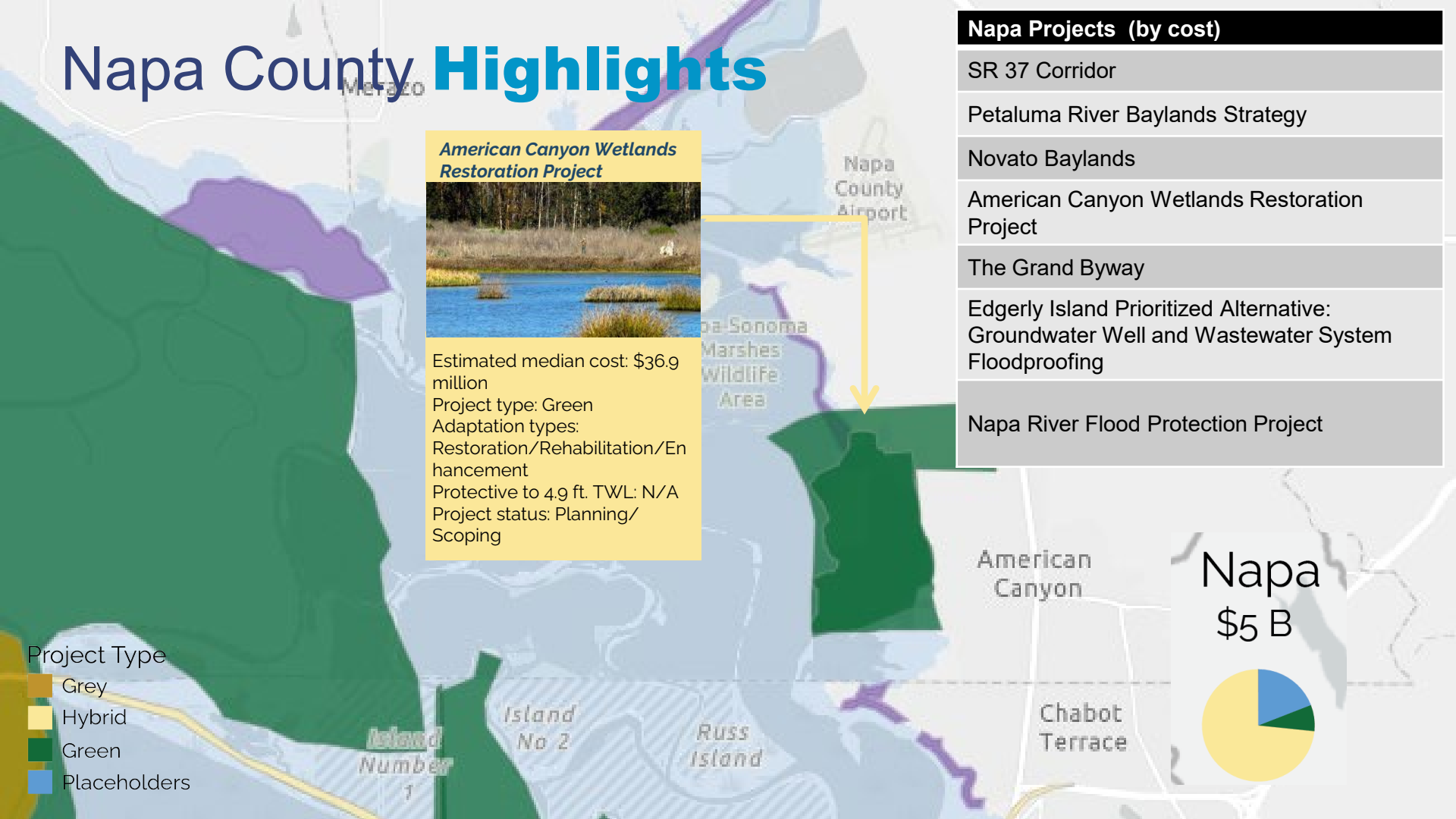
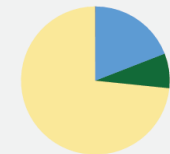
Estimated median cost: \$36.9 million
 Project type: Green
 Adaptation types: Restoration/Rehabilitation/Enhancement
 Protective to 4.9 ft. TWL: N/A
 Project status: Planning/Scoping

Napa Projects (by cost)

- SR 37 Corridor
- Petaluma River Baylands Strategy
- Novato Baylands
- American Canyon Wetlands Restoration Project
- The Grand Byway
- Edgerly Island Prioritized Alternative: Groundwater Well and Wastewater System Floodproofing
- Napa River Flood Protection Project

- Project Type
- Grey
 - Hybrid
 - Green
 - Placeholders

Napa
\$5 B

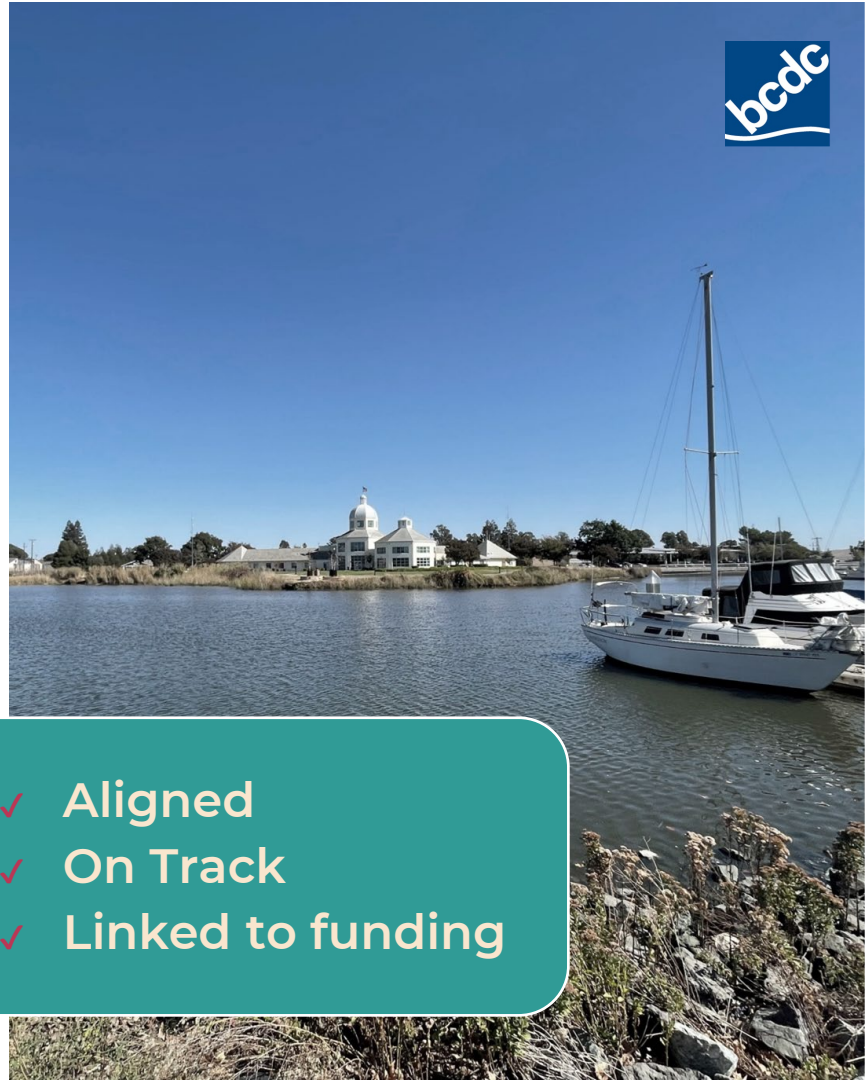


New legislation to support sea level rise adaptation (SB 272, 2023)

- Mandates local jurisdictions to develop **subregional resiliency plans** and for BCDC to develop guidelines that those plans must follow
- Requires BCDC to review - and **approve or deny** - plans based on consistency with guidelines
- **Prioritizes State funding** to create plans and for projects in approved plan jurisdictions
- Guidelines to be adopted by BCDC by **12/31/2024**



- ✓ Aligned
- ✓ On Track
- ✓ Linked to funding



Why do we need a Regional Shoreline Adaptation Plan?

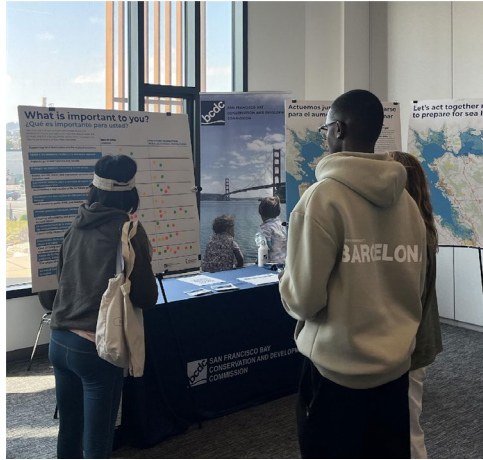
- **Coordinated** adaptation
- Priority resources to **frontline communities**
- Long-term **health of wetlands**
- **Strategic** implementation
- Common **standards and methods**
- Pipeline of **funding**
- Track and **measure progress**



**Regional Shoreline
Adaptation Plan**

An implementing project of **BAY ADAPT**

Working With And Listening To The Region



Napa County Electeds Engaged with BCDC

Commissioners and Alternates

- **Belia Ramos**, Napa County Board of Supervisors (Commissioner)
- **Joelle Gallagher**, Napa County Board of Supervisors (Alternate)

Local Electeds Task Force

- **Mark Joseph**, City of American Canyon

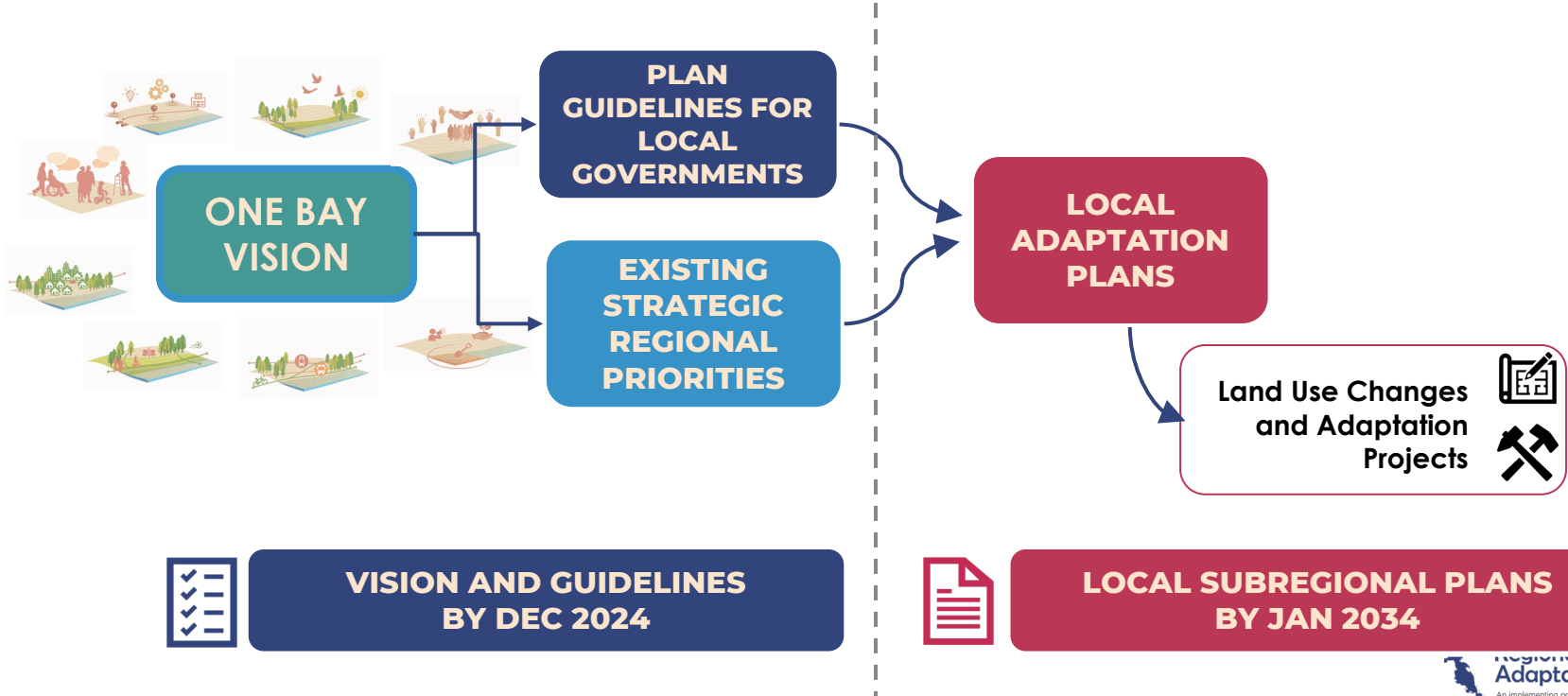
How do we start developing guidelines?



What Constitutes The Regional Shoreline Adaptation Plan?



**REGIONAL
ADAPTATION
ONLINE MAP**



**VISION AND GUIDELINES
BY DEC 2024**



**LOCAL SUBREGIONAL PLANS
BY JAN 2034**

Where are we now?

WHAT IS A SUBREGIONAL PLAN?

Possible Scale and Leads

- County Plan
- Single Jurisdiction Local Plan
- Multi-Jurisdictional Local Plan
- Combo

Plan Contents

- Vulnerability Assessment
- Adaptation Pathways
- Project List
- Land Use Plan
- Implementation Plan

Submission and Adoption

- Submit to BCDC for approval
- Local adoption
- Incorporated into local plans
- Eligible for prioritized funding for projects after adoption

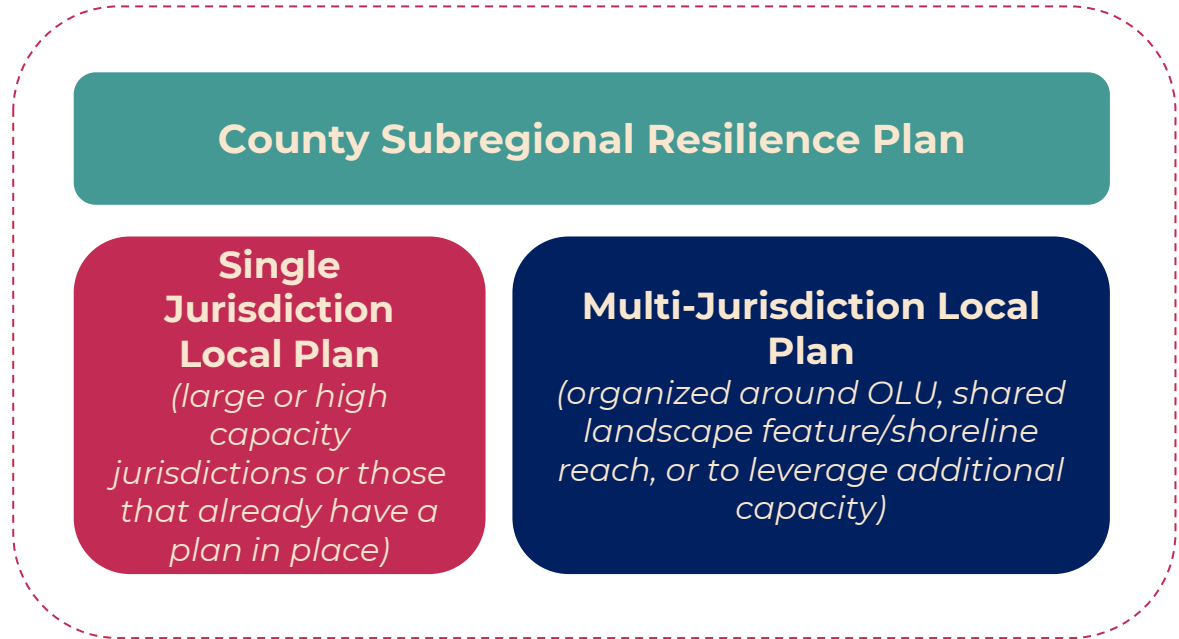
Subregional Plan Requirements Key Concepts

County Plan

- Covers unincorporated parts of the county
- Coordinates and organizes local plans

Local Plans

- Jurisdictions may submit **either** a single jurisdiction local plan or partner with their neighbors to submit a multi-jurisdiction local plan



Subregional Shoreline Resiliency Plan

Draft Guidelines Key Elements

Plan Element Guidelines

1. Element A: Overview of Planning Process
2. Element B: Existing Conditions
3. Element C: Vulnerability Assessment
4. Element D: Adaptation Strategies and Pathways
5. Element E: Project List
6. Element F: Land Use Plan
7. Element G: Implementation Plan

Minimum Standards and Considerations

1. Equitable Engagement and Participation Standards
2. Time Horizons Standards
3. Flood Hazard Standards
4. Minimum Assessment Categories
5. Vulnerability Assessment Standards
6. Adaptation Strategy Standards

How can the RSAP assist local governments?

- ✓ **Reduce uncertainty** surrounding climate change adaptation plans and projects
- ✓ Provide **needed resources** for planning and projects
- ✓ Plan in an **integrated way**
- ✓ **Prioritize** EJ communities, local and regionally-significant infrastructure, habitats, and areas most at risk into a cohesive planning process
- ✓ Require **collaboration** for multi-benefit and multi-jurisdictional adaptation projects



RSAP – What’s Next

- Sea Level Rise **Planning Grants available now** from Ocean Protection Council!
- **Local Electeds Task Force** meeting
- Launching a **Shoreline Leadership Academy** to build capacity for community-driven planning
- **Public review and Commission approval** of RSAP guidelines in December 2024
- **Technical and policy assistance** program to help plans get developed in 2025
- Long-term **funding strategy** – how will the region pay for this and decide what to fund first?
- **Aligning permitting** with innovative planning



Stay Involved

Learn more & sign up for our newsletter at

www.bayadapt.org

Larry Goldzband

Executive Director

Larry.Goldzband@bcdc.ca.gov

Dana Brechwald

Assistant Planning Director for Climate Adaptation

Dana.Brechwald@bcdc.ca.gov