

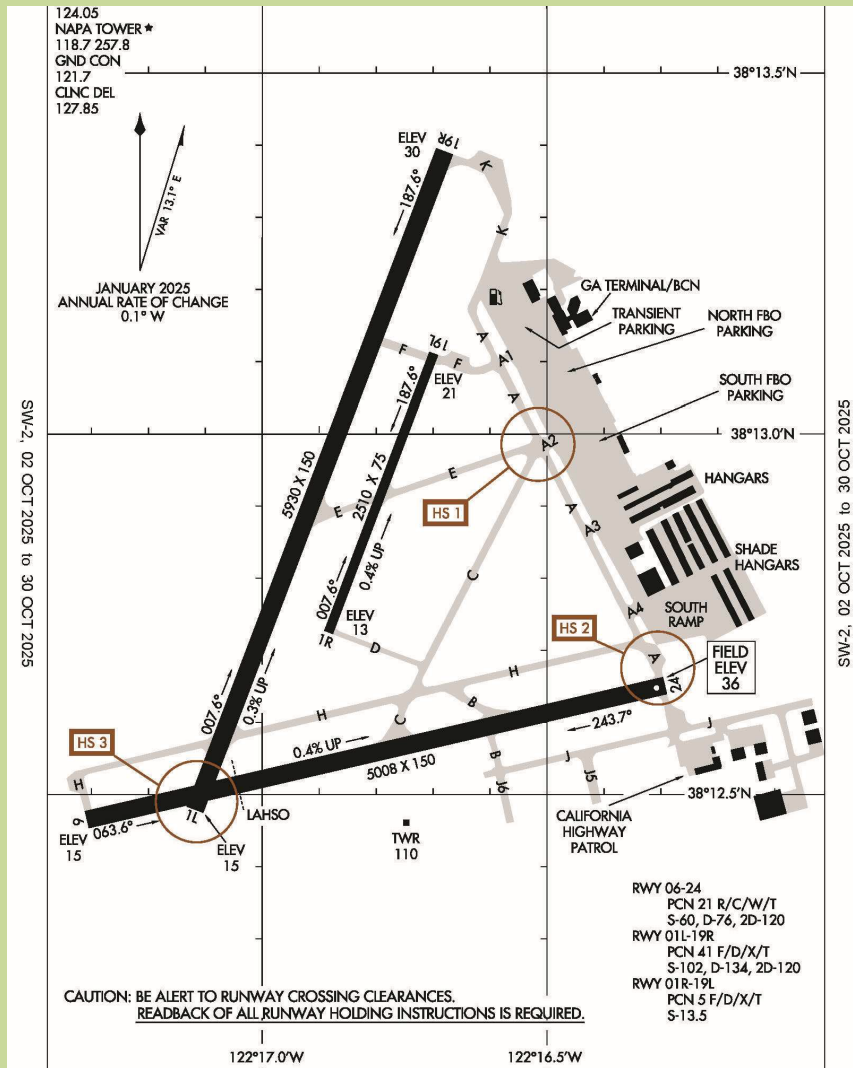
COMMUNITY CONCERNS ABOUT NOISE AND OVERFLIGHTS



AGENDA

- Background
- Airport operations data
- Complaint mapping
- Tasks and schedule

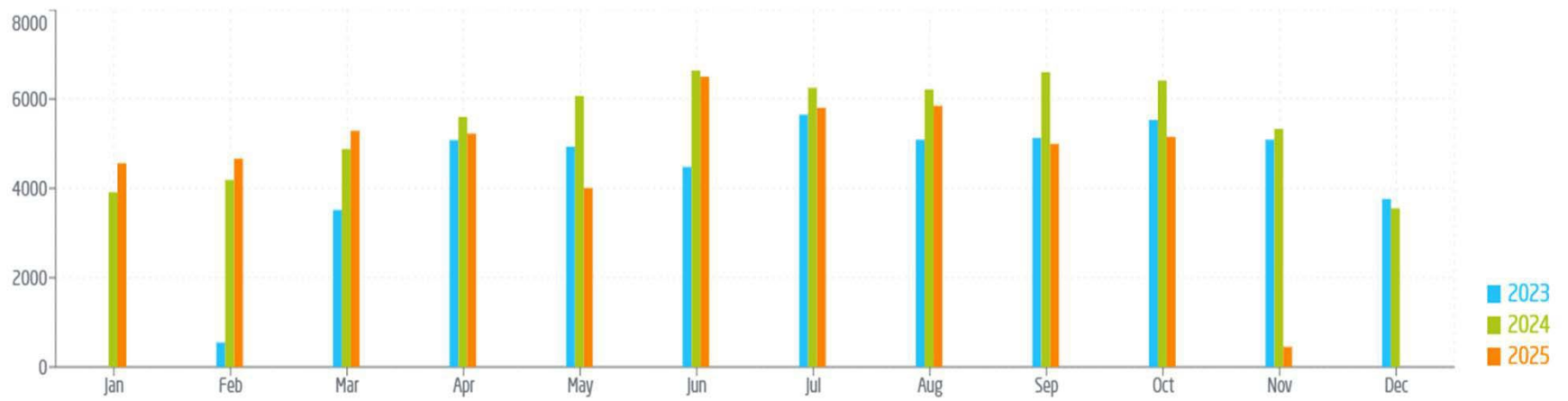




NAPA COUNTY AIRPORT

- GENERAL AVIATION RELIEVER
- NO AIRLINE FLIGHTS
- 3 RUNWAYS
- #1 OPS - FLIGHT TRAINING
- INSTRUMENT LANDING SYSTEM
APPROACH TO RWY 1L
- GPS APPROACH TO RWY 19R

Landings & Takeoffs





AIRPORT OPERATIONS HIGHLIGHTS

- Traffic generally is similar day to day with weekdays slightly higher.
- Piston-propellor aircraft are predominant.
- Jets are about 17% of operational traffic
- Most of the airport's operations are during the workday, which is consistent with single-engine flight training.
- 62% of landings are to Runway 19R.

FAA RWY 19R GPS/RNAV APPROACH

BACKGROUND INFORMATION

The Federal Aviation Administration (FAA) manages all airspace, including traffic control, safety, and efficiency for crewed and uncrewed (drone) aircraft.

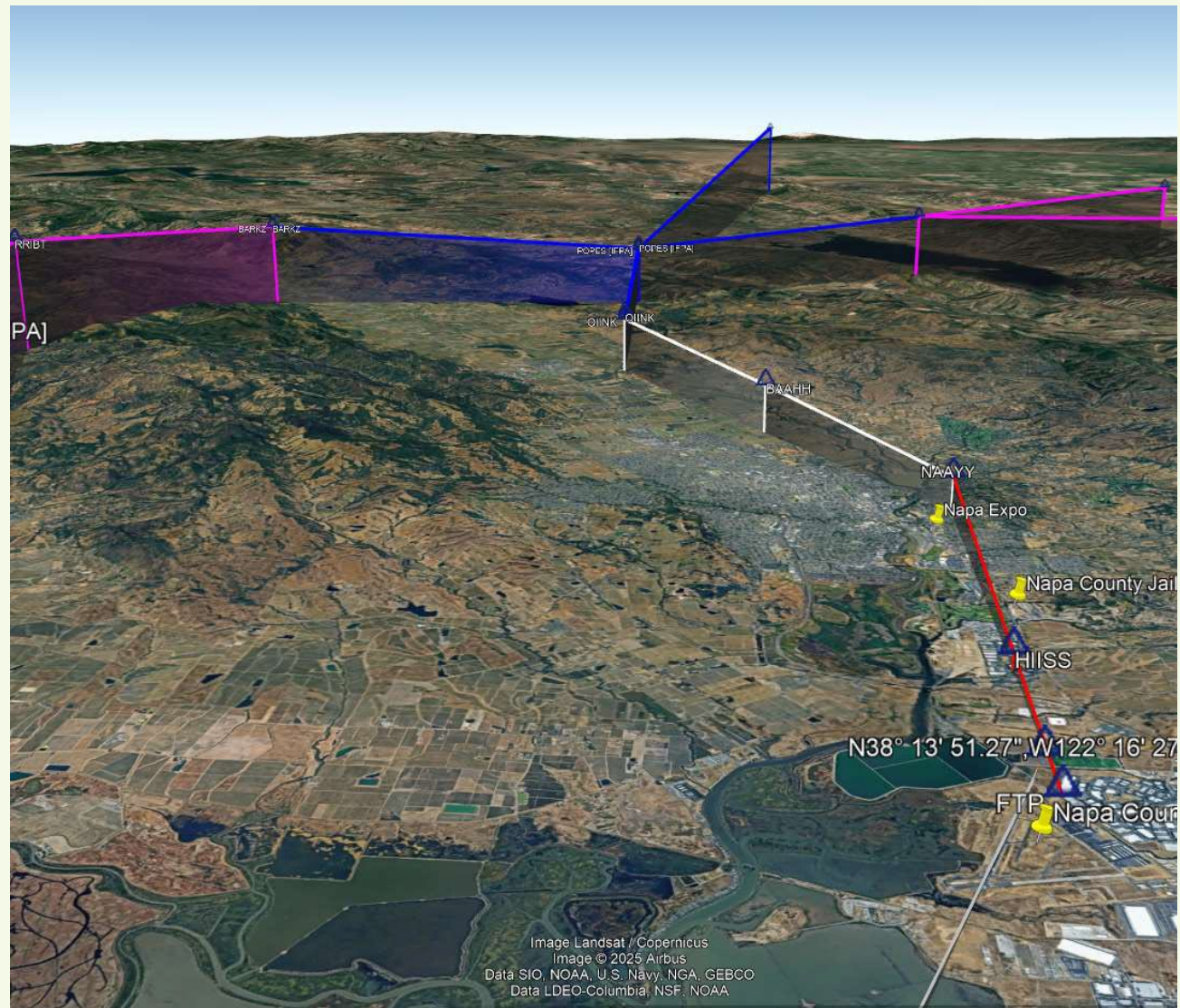
FAA published a GPS/RNAV approach to Runway 19R in September 2024. It was one of several approaches published in the region.

FAA had worked on this approach for several years. It was created for flight safety and air traffic management improvements.

An environmental review was conducted in accordance with DOT Order 5610.1C, Procedures for Considering Environmental Impacts, and FAA Order 1050.1F, Environmental Impacts: Policies and Procedures.

The FAA also owns and operates an Air Traffic Control located at Napa County Airport from 7 a.m. to 8 p.m. daily.

GPS APPROACH TRACK



GPS APPROACH TRACK

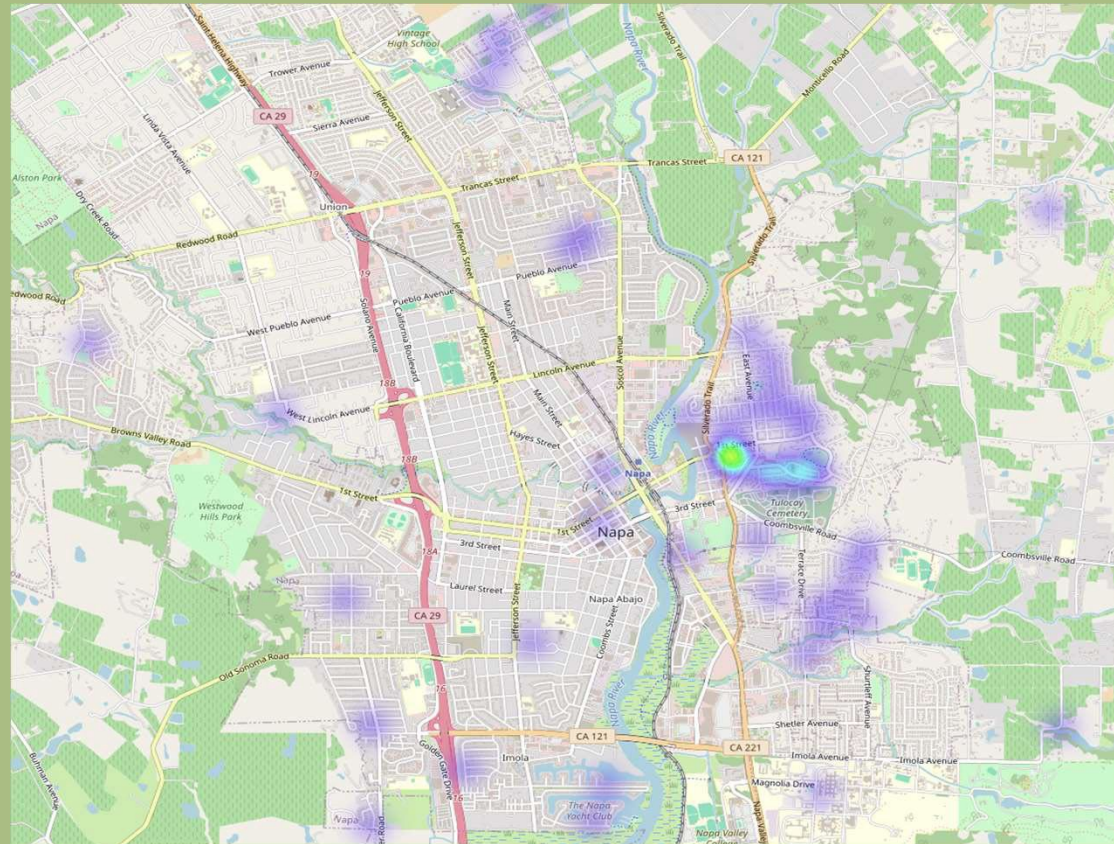


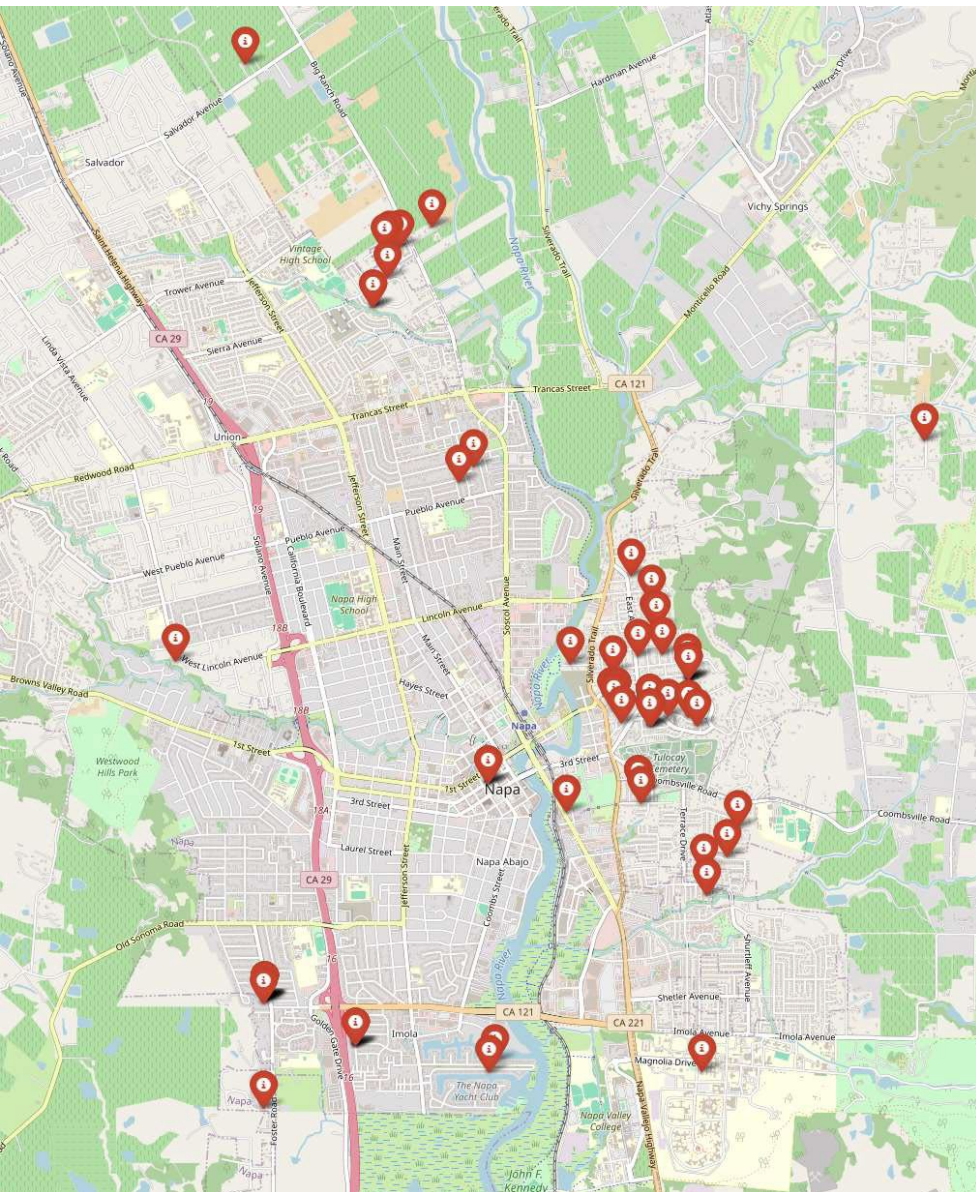
19R GPS APPROACH LOG FOR JET AIRCRAFT

For the month of October 2025:

- 175 – corporate jets have flown in or near the approach to Runway 19R. This compares to 177 in September
- 6 average daily jet arrivals; but busy days have as many as a dozen.
- Aircraft are flying at the prescribed altitude or higher.

Noise Complaints Heat Map





NOISE COMPLAINTS PINPOINT MAP

NOISE REPORT FORM

Airport



News

[Regional air carrier JSX to debut Napa County flights to Orange County and Burbank starting July 3, 2025. Learn more...](#)



Construction

Phase 1 of the Terminal Redevelopment Project has been completed! Current projects include Taxiway K Reconstruction, and the two FBO Redevelopment Projects. For detailed information, please visit our [Construction](#) page.

Instrument Approach to Runway 19R from the North

Airport Staff have worked with the Noise Working Group and the Federal Aviation Administration (FAA) on an improved approach to the airport's Runway 19R which is safe, higher over the valley, and utilizes modern navigational aids to be more accurate. The Airport Noise Working Group is a subcommittee of the Napa County Airport Advisory Commission.

[Federal Aviation Administration Informational Handout](#)

[Runway 19R Approach graphic](#)

A local pilot flew the new approach from the north end of the valley along the indicated course at the prescribed altitudes descending at the prescribed angle of descent. You are welcome to review the video and see the improved conditions to make the airport safe and neighborly.

Mark Witsoe

Airport Manager, A.A.E/CAE
Accredited Airport Executive
Phone: [707-253-4665](tel:707-253-4665)

Airport

[Email the Napa County Airport](#)

Physical Address

[View Map](#)

2000 Airport Road
Napa, CA 94558

[Directions](#)

Phone: [707-253-4300](tel:707-253-4300)

Noise Hotline [707-253-4333](tel:707-253-4333)

[Pay now](#) on the Napa County
Airport Fee Payment Site.



Report Noise

NAPA COUNTY AIRPORT



NOISE COMPLAINT REPORT FORM

Napa County Airport Noise Concern Form

When you submit this form, it will not automatically collect your details like name and email address unless you provide it yourself.

* Required

1. FULL NAME *

Enter your answer


2. ADDRESS OF NOISE OCCURRENCE *

Enter your answer

3. YOUR EMAIL OR PHONE NUMBER *

Enter your answer

4. DATE OF NOISE OCCURRENCE *

Please input date (M/d/yyyy) 

5. APPROXIMATE TIME OF NOISE OCCURRENCE (AM/PM) *

Enter your answer

6. AIRCRAFT TYPE *

☐ BUSINESS JET

☐ SINGLE ENGINE

☐ HELICOPTER

7. NATURE OF NOISE OCCURRENCE *

☐ FREQUENCY OF AIRCRAFT

☐ EARLY MORNING OR LATE NIGHT

☐ LOW FLYING AIRCRAFT

☐ EXCESSIVE NOISE

☐ Other

8. BRIEF DESCRIPTION OF NOISE OCCURRENCE

Enter your answer

Submit

RESPONSE TO COMMUNITY CONCERNS

The airport embarked on a multi-tasked effort to identify, track, and mitigate community concerns.

DESCRIPTION	Completion Schedule	STATUS
Log 19R GPS Jet traffic	ongoing	ongoing
Log complaints on a web-based form	completed	ongoing
Create web-based FAQ	completed	Posted
Communicate Graphically	ongoing	V1.0
Aircraft event notifications on NextDoor	ongoing	ongoing
Study feasibility of a new visual approach	ongoing	ongoing

RESPONSE TO COMMUNITY CONCERNS

The airport embarked on a multi-tasked effort to identify, track, and mitigate community concerns.

DESCRIPTION	Completion Schedule	STATUS
Redesign Website with Community Noise Page	TDB	In works
Request FAA review GPS approach with data	TBD	In works
Create 'Fly neighborly Program'	TBD	Next NWG Agenda
Contact A/C operators 'flying unneighborly'	TBD	Prerequisite program

Proposed Actions

Proposed planning, and environmental services work by our existing contracted consultants to:

- Amend the contract - adding \$220,000 and one year of term for a total of \$300,000.
- Negotiate a task order (\$185,000 est.)
 - to evaluate the feasibility of additional flight approach procedures.
 - Conduct public engagement on any new course of action
 - Perform any required environmental review for the County recommending a flight procedure to the FAA.

Proposed Actions

Proposed planning, and environmental services work by our existing contracted consultants to:

- Negotiate a task order (\$35,000 est.) to secure an initial environmental determination under NEPA/CEQA for rehabilitating Taxiway C in phases.

Amend the Airport Operating Budget:

- Increase appropriation by \$220,000 in the Consulting Services account in the Airport Operations budget (Fund 5010, Subdivision 5010000, Account 52310) from available Airport Enterprise Fund Balance.

Important Caveats

- No guarantee that FAA will approve a new procedure recommended by the County.
- FAA cannot require pilots to fly a visual procedure.
- Usage will be voluntary, even if the County requests that it be used.
- Aircraft will continue to arrive using the existing instrument approach, if they prefer, without penalty.

Mark Witsoe, A.A.E./CAE
Airport Manager
mark.witsoe@countyofnapa.org

