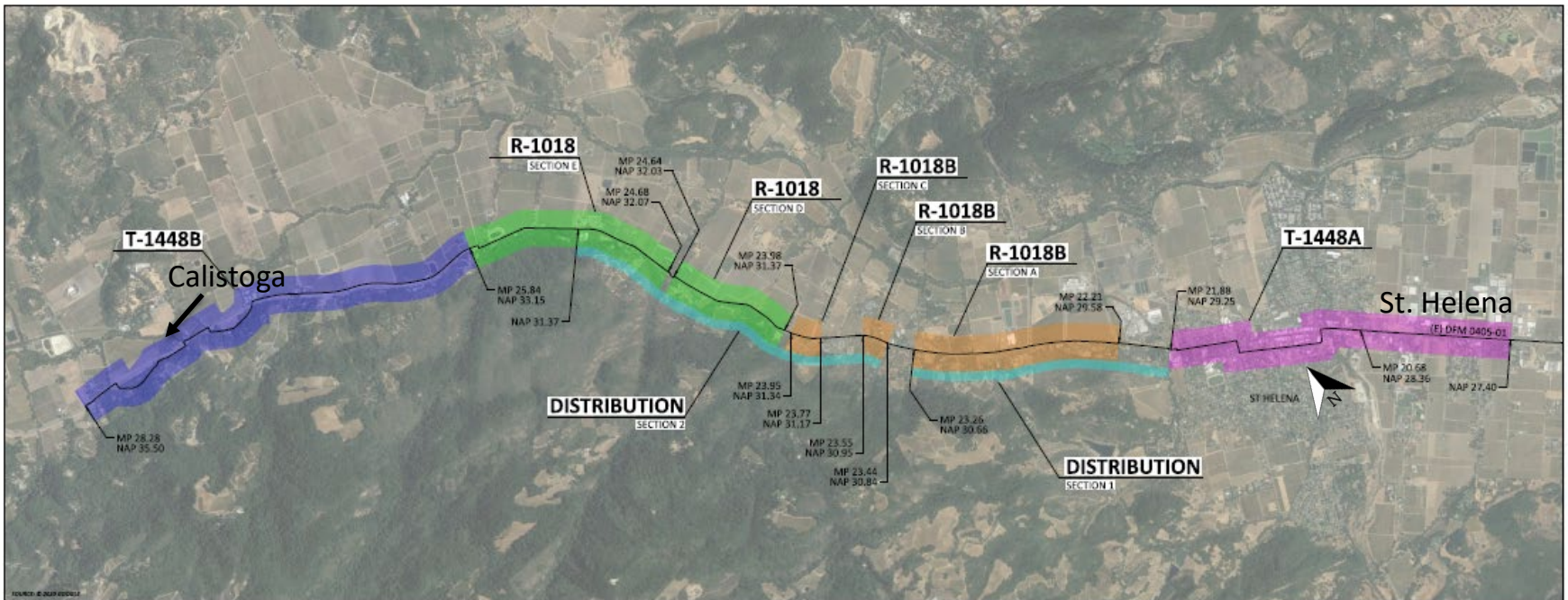


# Napa Bundle Northern Corridor Gas Pipeline Maintenance Program Project Update 2023



St. Helena to Calistoga  
State Route 29 | Napa County | Post Miles 27.4-35.5





**NAPA BUNDLE STRENGTH TEST & REPLACEMENT PROJECT MAP**  
**DFM 0405-01 MP 20.68 - 28.28**  
**ST HELENA HIGHWAY (ROUTE 29)**

T = Testing  
 R = Replacement



# PG&E Gas Distribution & Transmission Pipeline Upgrade

- Project along 7 miles of gas pipeline between St. Helena and Calistoga
  - Transmission Line Replacement
  - Distribution System Installation
- Work will occur both within and adjacent to SR 29
- Continued coordination and NVRTA projects.
- Purpose
  - Safety
  - Reliability
  - Meeting Capacity
  - Replace Vintage Pipe

## CONSTRUCTION SCHEDULE January 2023– September 2023

- **Caltrans Permit**
  - Work Hours: 9 pm to 6 am Sunday Night to Friday Morning
  - Day time work and traffic control limited to shoulder closers.
  - Mitchel Lane close between Oak and Main St. –Nighttime
  - Sidewalk between Sunshine Market and Mitchel closed 24 hr. per day.
  - Moratorium on work 1 day before, during and 1 day after holiday periods.
  - Shut down during Bottle Rock
  - CEQA Requirements
- **City of St. Helena Encroachment Permit.**
- **City of St. Helena Noise Permit.**
- **City of St. Helena Discharge Permit. Fountain Street**
- **County of Napa Encroachment Permit.**



# Napa Bundle Northern Corridor Gas Pipeline Maintenance Program Update

## Project Status

### Strength Tests

- T-1448A (St Helena):
  - Test postponed to 2026
  - New distribution pipe installed beneath Sulphur Creek –In service
  - New Transmission pipe installed beneath Sulphur Creek – not in service
- T-1448B – Madrigal Winery to Dunaweal Ln.
  - Complete
- **Replacement Projects (R-1018/R-1018B/Distribution service work)**
  - 40,000 feet of distribution main and transmission main installed
  - Mains are not in service
  - 70% of Service work completed

## February 2023- September 2023

- **2023 Project Activities:**
  - Place the transmission pipe in service .
  - Retire existing pipe
  - Remove pipe from bridge
  - All excavation between Gotts and Sunshine Market on Hwy 29 and Mitchell Drive



## January 2023 to August 2023

- **Location:** Install pipeline adjacent to and/or within SR 29
  - R-1018B: Pratt Ave to Ehlers Lane
  - R-1018: Ehlers Lane to Larkmead Lane
- **2023 Project Activities:**
  - Complete distribution service work
  - Transfer customers to new distribution main
  - Place into service new transmission and distribution mains
  - Clean and abandon existing transmission lines.



# 2023 Pipeline Replacement – Work Areas

## Main Work Areas – Lane Closure (Night work)

- Pratt Ave
- North End of Elm Tunnel
- Bird Hill Lane
- Ehlers Lane
- Mill Creek Bridge
- Big Tree Road

## Work Areas – Day Time Shoulder Closures

- Coordinated between Caltrans and NVTA Bike Trail
- Individual locations for distribution service connections



# Temporary Gas Supply During Transition to New Pipe

- Transition Customer Services : typically less than 30 minutes. May occur where:
  - Gas meter replaced
  - Safety issues within the customer owned gas system
  - Portable Gas tanks
- When placing the new transmission pipe in service liquefied natural gas (LNG) will be injected into the pipeline system at Dunaweal Lane.



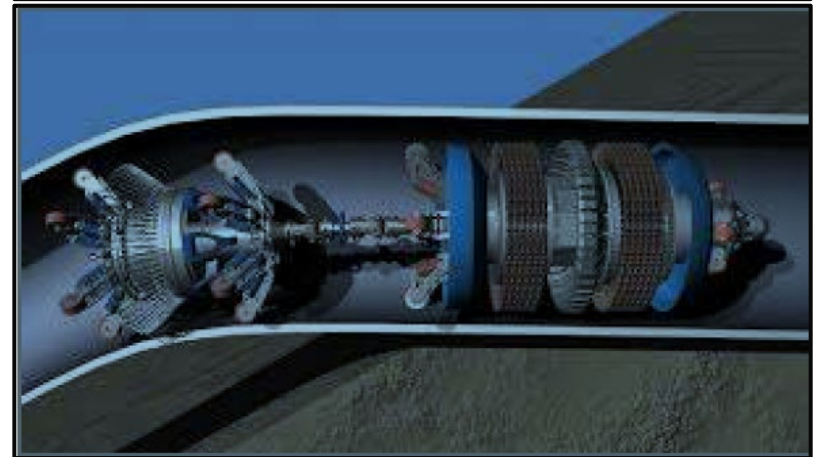
**PG&E**

**DFM 0405-01 In-Line-Inspection  
(ILI) Pigging Operations  
Napa County**



## Background

- What is in-line (interior) inspection?
- Safety element – why is it necessary?
- Why is an in-line inspection tool referred to as a “pig”?



In-line inspection tool

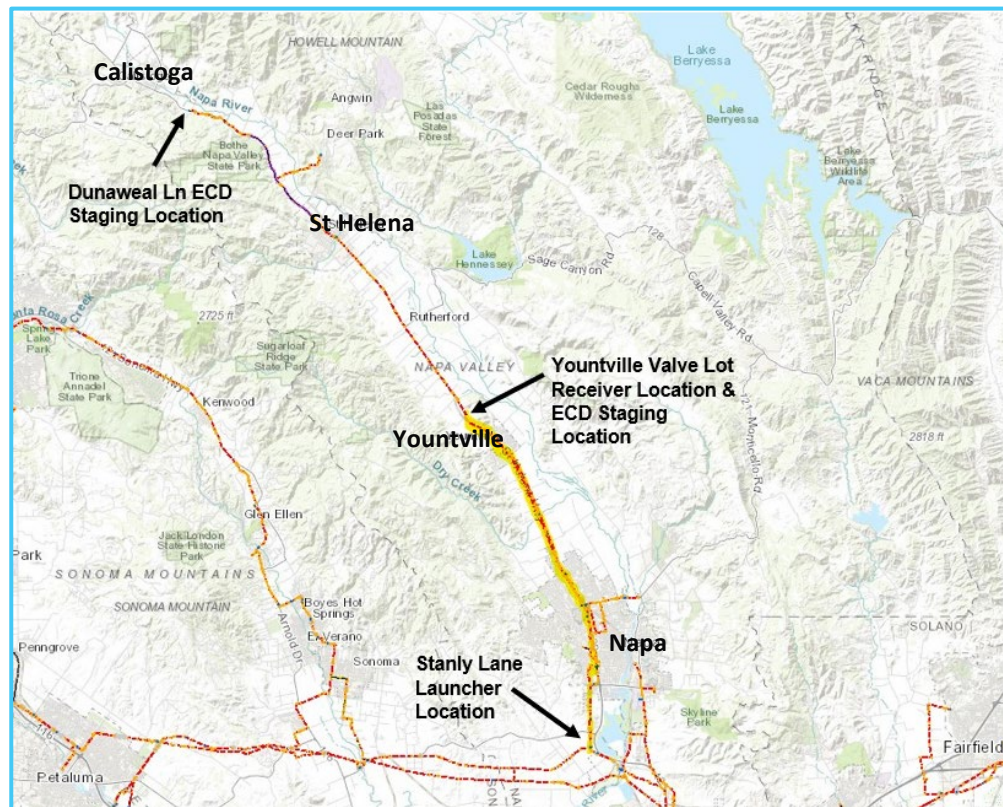
## DFM 0405-01 Traditional In-Line-Inspection Napa to Yountville

### • Scope

- Traditional ILI on approximately 13-miles of 8" and 10" pipeline.
- Project Compliance due date is 12/31/2023
- Run 8"x10" Smart Pigs / ILI Tools
- Permanent Launcher (Stanly Ln Station) to Permanent Receiver (Yountville Valve Lot)
- Enclosed Combustion Devices (ECDs) will be hooked up at receiver as well as downstream of the receiver to artificially create demand needed to pull the pigs during inspection

### • Schedule

- Construction Mob – January 2023
- ECD Delivery – April 2023
- ILI Inspection/Tool Run – Beginning of May 2023
- Construction Demob – Beginning of June 2023



## Customer Reliability Contingency Plan

- During the ILI:

- Customers between Napa & Yountville will be back fed from another pipeline or temporarily fed with CNG
- Pressures and flows will be monitored upstream and downstream of the tools

- In the event of a stuck tool:

- Contingency LNG will be staged in Yountville at Caltrans turn out ready to inject/feed customers downstream
- Pipeline section will be safely isolated to remove stuck tool



# Enclosed Combustion Devices (ECDs)

## What is an Enclosed Combustion Device?

- PG&E currently used 2 types of combustor units
- Questor's Thermal Oxidizers: Oxidizes hazardous gases at a high temperature and releases benign by-products into atmosphere
- TCI's ECD units: Efficient waste gas combustion solution (flameless, however considered enclosed flare)

## Why use ECDs?

- To increase pipeline flow that would otherwise be insufficient to pull a pig
- The flow control device on ECD manifold allows for optimal pig velocity

## When will the ECDs be operating?

- ECD Delivery/Testing – April 2023
- Inspection – Beginning of May 2023 (Daytime hours)



3 Questor units– To be staged at Yountville Valve Lot



4 TCI Dual Stack Trailers – To be staged at Dunaweal Ln

# Previous ILI Project in Auburn (July 2022) – Similar ECD set up to Dunaweal Ln





# Meeting with Napa Emergency Officials

## Presentation with Napa Emergency Officials on 12/01/2022

- Attendees included:
  - PG&E ILI Project Team – PM, Engineer, and ECD subject matter expert
  - PG&E Public Safety Specialist & Government Relations
  - Cal FIRE, Napa County OES, Napa County Fire Chiefs, and local CHP
- During the meeting, the following topics were discussed/requested:
  - ECD Preparation & Fire Mitigation Plan
  - Transportation of ECD equipment in and out of Napa County
  - Social media notifications (including Cal FIRE Facebook)
  - Public notifications (including signage along Hwy 29 in Yountville & Calistoga)



# Thank You!

- Q&A
- Discussion





# Appendix - Reference

## ECD Preparation & Fire Mitigation Plan

- Start with PG&E Wildfire Mitigation Standard (TD-1464S)
- Local air district permitting coordination
- Communicate to all local agencies including CalFire, Napa County OES, CHP, as well as city/county fire departments
- Staging site(s) must be cleared to bare mineral soil with safety/buffer zone set around each ECD
- Dedicated fire watch by internal Safety and Infrastructure Protection Team (SIPT)
- Water sources should be staged around entire site including 4,000-gallon water tender and operational Fire Engine(s)
- No operation on Fire Potential Index ratings of R5 or higher
- No operation on Red Flag Warning or sustained winds above 15mph



## Public Outreach

- On going since 2019
- Media Outreach
- Door Hangers
- Letters
- Individual Business Contacts
- Robo calls
- Changeable Message Boards (along Hwy 29)
- Project Signage Boards (at ECD sites)
- Project Web Page