

Well Name:
06N04W17A001M

Monitoring Network
SGMA Representative Monitoring Network

SGMA Sustainability Indicator(s)
Groundwater Levels (GWL), Land Subsidence (LS)

Supplemental Indicator(s)
Groundwater Quality, Interconnected Surface Water, Groundwater Dependent Ecosystems

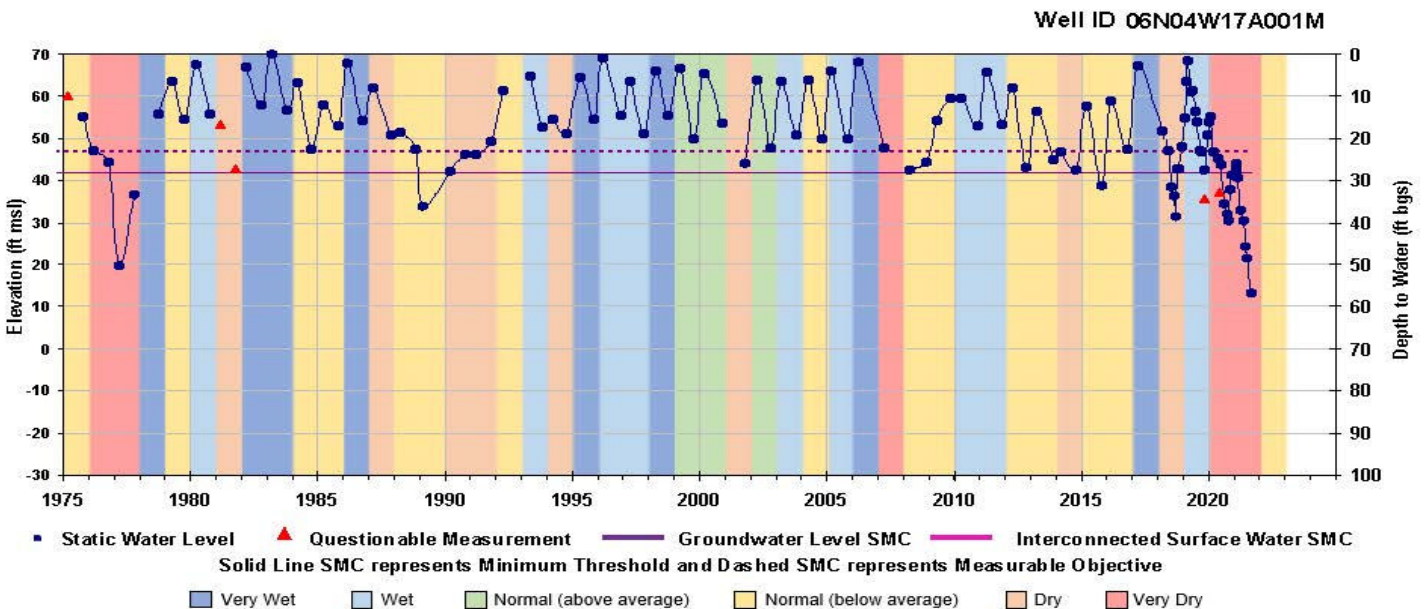
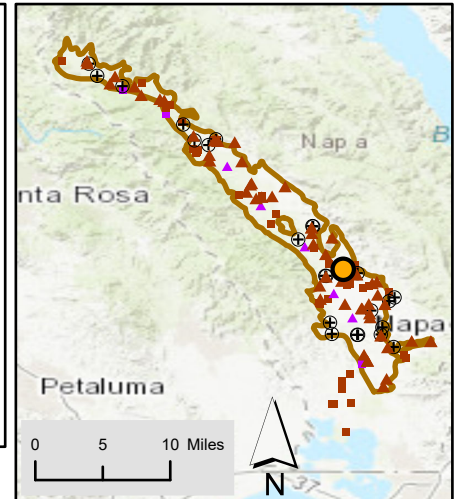
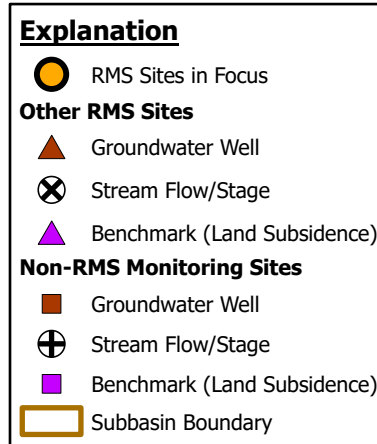
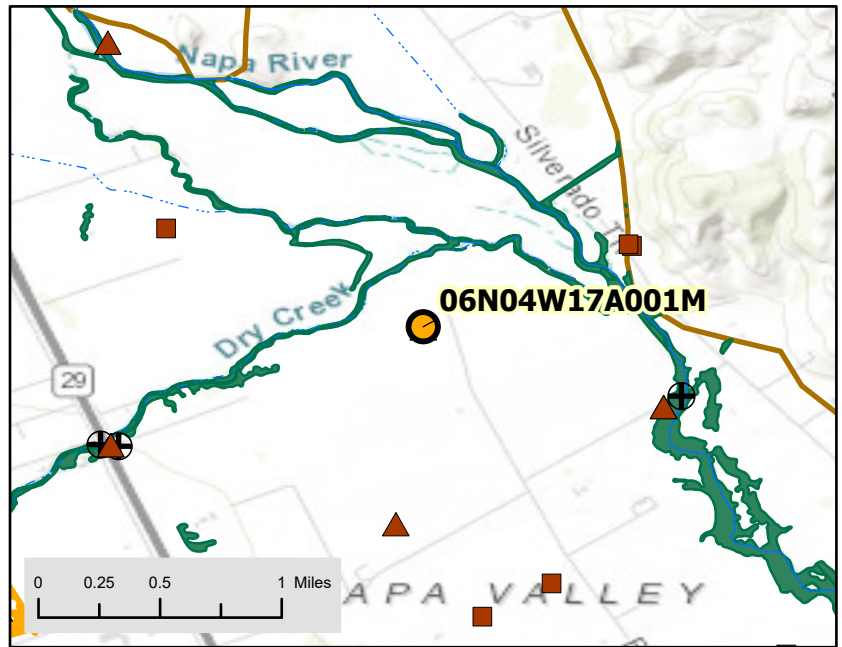
Well Identification
SWN: 006N004W17A001M
MNM: NA

Well Construction
Well Type: Domestic well
Well Depth (ft bgs): 250
Top of Perforation (ft bgs): NA
Bottom of Perforation (ft bgs): NA
Well Completion Report Available? Yes

Monitoring Information
Monitoring Frequency: Monthly GWL, Semi-Annual GWQ
Measurable Objectives (MO) and Minimum Thresholds (MT) (ft amsl):
GWL MO = 47.0; MT = 42.0

Groundwater Level Observation
Most Recent Water Level:
Measurement Date: 9/1/2021 (Napa County to take over monitoring)
Depth below ground surface (ft): 56.60
Elevation (ft amsl): 13.06

Location Description
Latitude/Longitude: 38.3721/-122.3189
Ground Surface Elevation (ft amsl): 69.66
Distance to Perennial Stream (ft): 1,100
Alluvial Thickness (ft): 210



Well Name:
07N05W09Q002M

Monitoring Network
SGMA Representative Monitoring Network

SGMA Sustainability Indicator(s)
Groundwater Levels (GWL), Land Subsidence (LS)

Supplemental Indicator(s)
Interconnected Surface Water, Groundwater Dependent Ecosystems

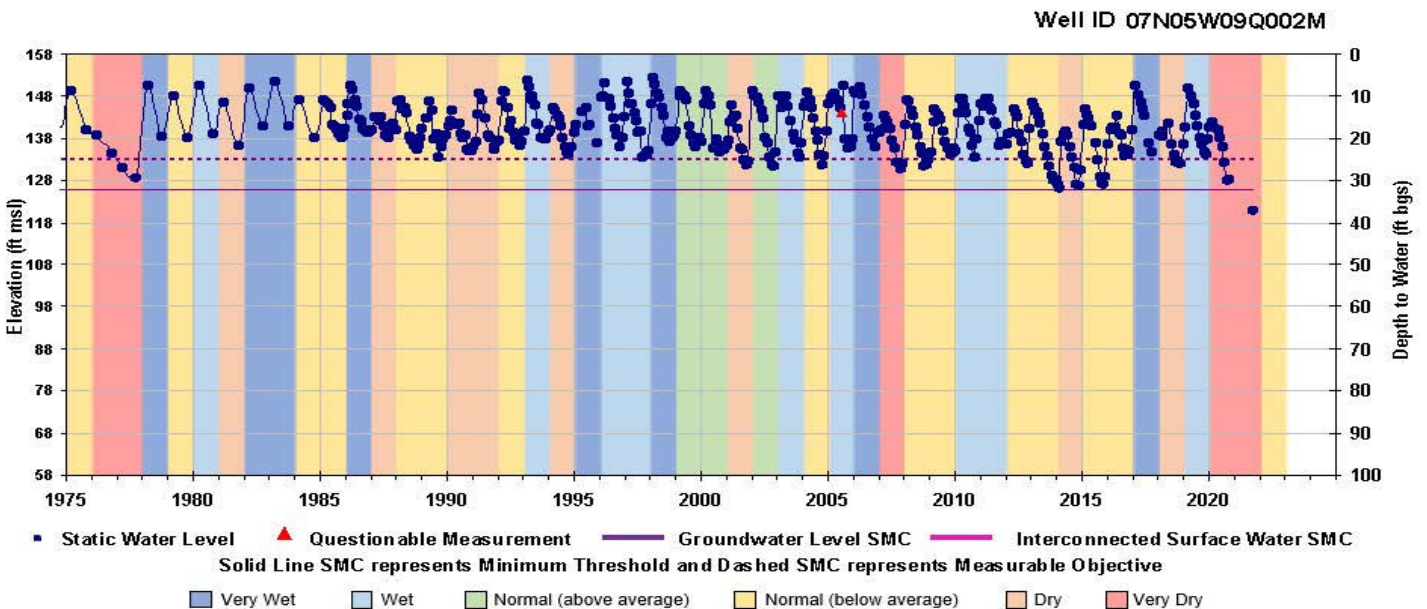
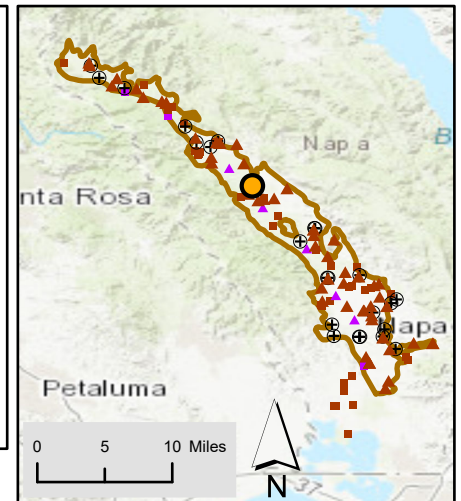
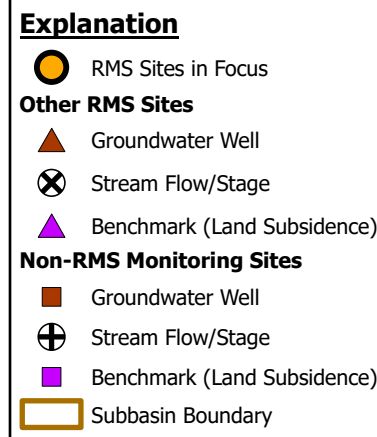
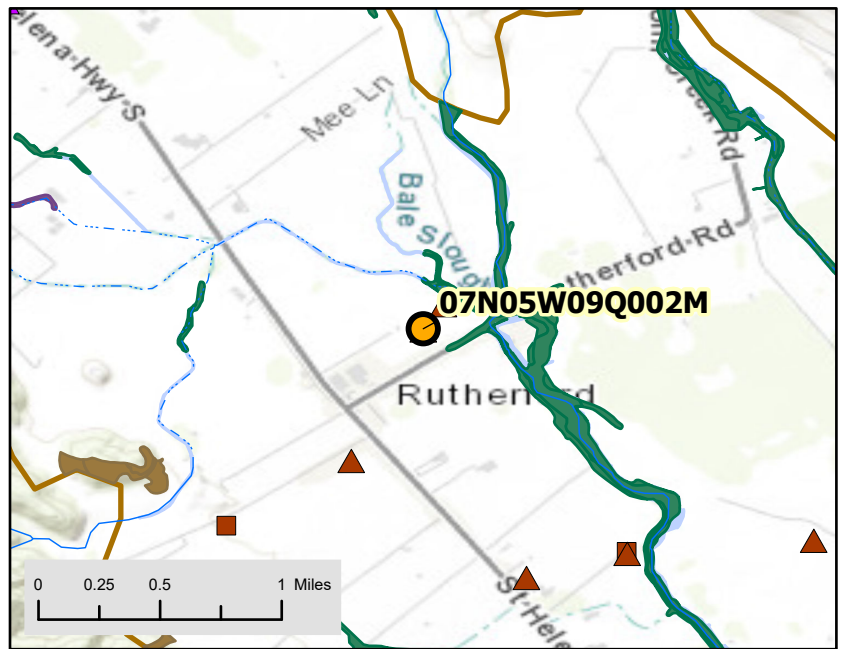
Well Identification
SWN: 007N005W09Q002M
MNM: 384635N1224182W001

Well Construction
Well Type: Unused well
Well Depth (ft bgs): 232
Top of Perforation (ft bgs): NA
Bottom of Perforation (ft bgs): NA
Well Completion Report Available? No

Monitoring Information
Monitoring Frequency: Monthly GWL, Semi-Annual GWQ
Measurable Objectives (MO) and Minimum Thresholds (MT) (ft amsl):
GWL MO = 133.0; MT = 126.0

Groundwater Level Observation
Most Recent Water Level:
Measurement Date: 9/17/2021 (Napa County to take over monitoring)
Depth below ground surface (ft): 36.89
Elevation (ft amsl): 120.85

Location Description
Latitude/Longitude: 38.4635/-122.4182
Ground Surface Elevation (ft amsl): 157.74
Distance to Perennial Stream (ft): 900
Alluvial Thickness (ft): 210



Well Name:
08N06W10Q001M

Monitoring Network
SGMA Representative Monitoring Network

SGMA Sustainability Indicator(s)
Groundwater Levels (GWL), Land Subsidence (LS)

Supplemental Indicator(s)
Interconnected Surface Water

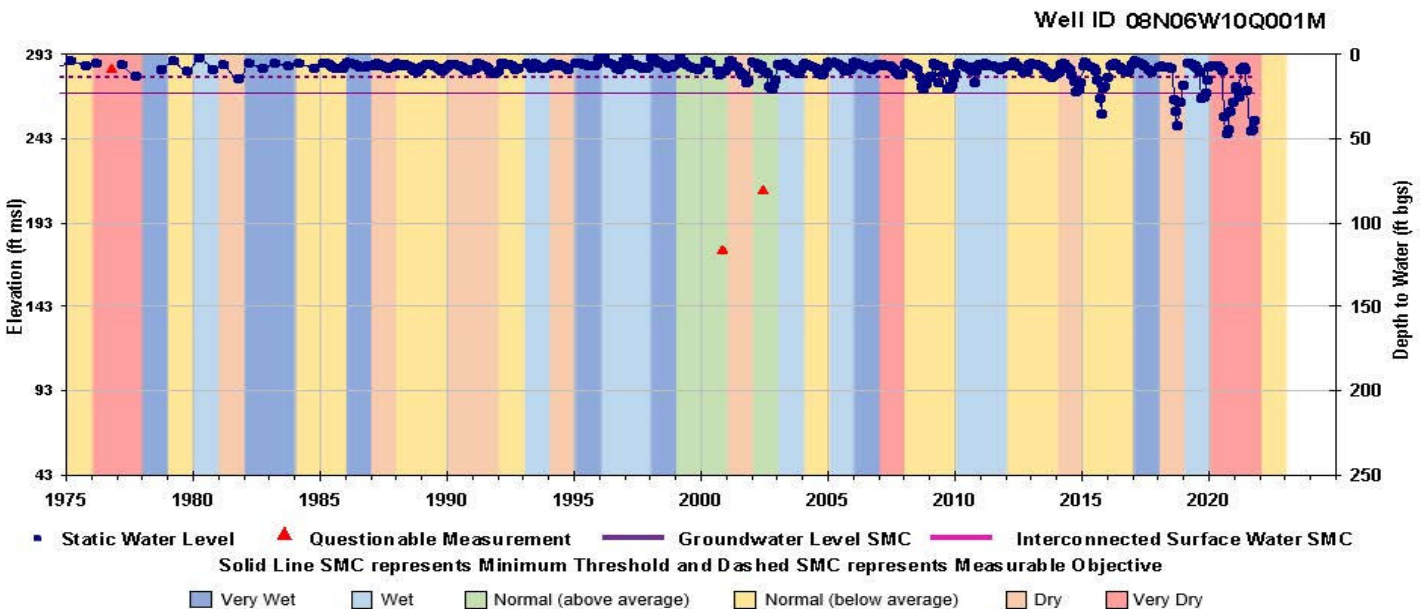
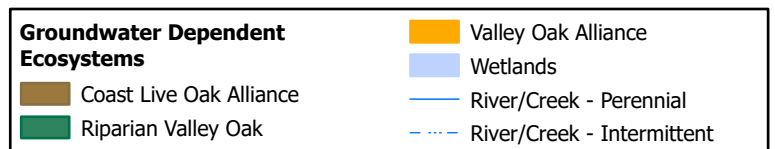
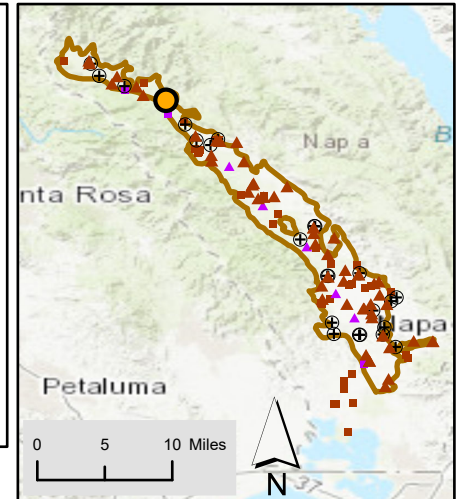
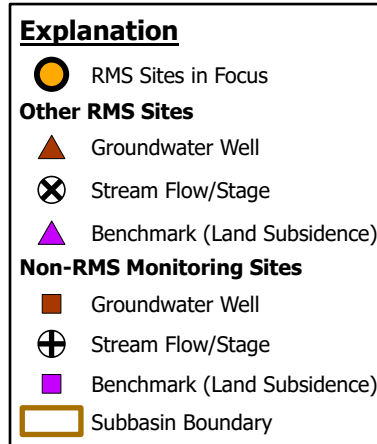
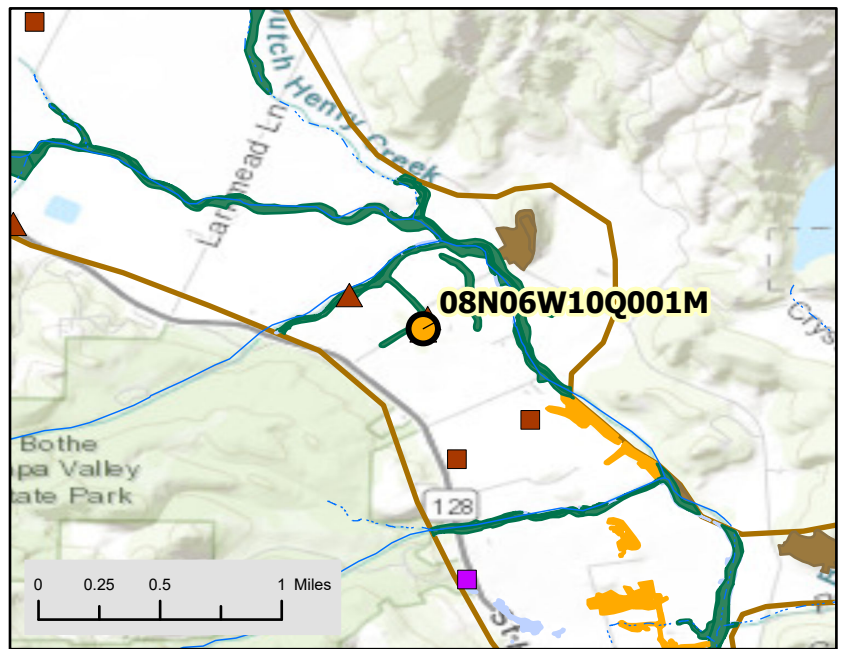
Well Identification
SWN: 008N006W10Q001M
MNM: 385529N1225106W001

Well Construction
Well Type: Unused well
Well Depth (ft bgs): 200
Top of Perforation (ft bgs): NA
Bottom of Perforation (ft bgs): NA
Well Completion Report Available? Yes

Monitoring Information
Monitoring Frequency: Monthly GWL, Semi-Annual GWQ
Measurable Objectives (MO) and Minimum Thresholds (MT) (ft amsl):
GWL MO = 279.0; MT = 270.0

Groundwater Level Observation
Most Recent Water Level:
Measurement Date: 10/8/2021 (Napa County to take over monitoring)
Depth below ground surface (ft): 39.20
Elevation (ft amsl): 253.63

Location Description
Latitude/Longitude: 38.5529/-122.5106
Ground Surface Elevation (ft amsl): 292.83
Distance to Perennial Stream (ft): 1,400
Alluvial Thickness (ft): 150



Well Name:
NapaCounty-122

Monitoring Network

SGMA Representative Monitoring Network

SGMA Sustainability Indicator(s)

Groundwater Levels (GWL), Land Subsidence (LS)

Supplemental Indicator(s)

NA

Well Identification

SWN: 006N004W26L005M

MNM: 383356N1222744W001

Well Construction

Well Type: Domestic well

Well Depth (ft bgs): 210

Top of Perforation (ft bgs): 60

Bottom of Perforation (ft bgs): 150

Well Completion Report Available? No

Monitoring Information

Monitoring Frequency: Semi-Annual GWL

Measurable Objectives (MO) and Minimum Thresholds (MT) (ft amsl):

GWL MO = -37.0; MT = -45.0

Groundwater Level Observation

Most Recent Water Level:

Measurement Date: 3/4/2022

Depth below ground surface (ft): 93.98

Elevation (ft amsl): -35.33

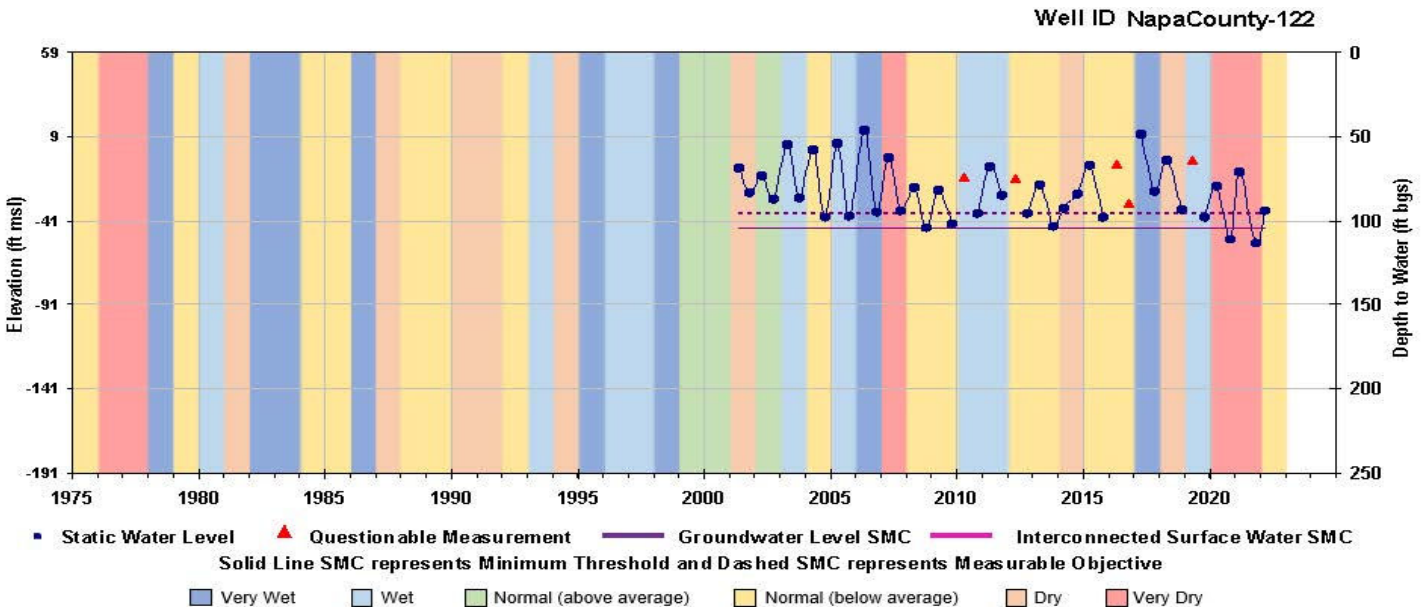
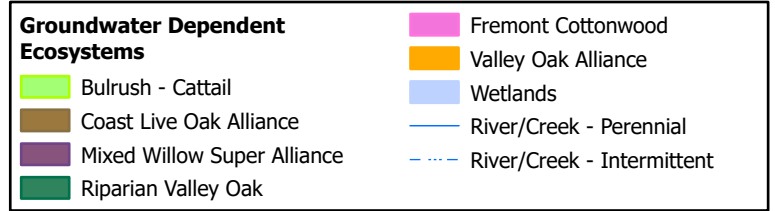
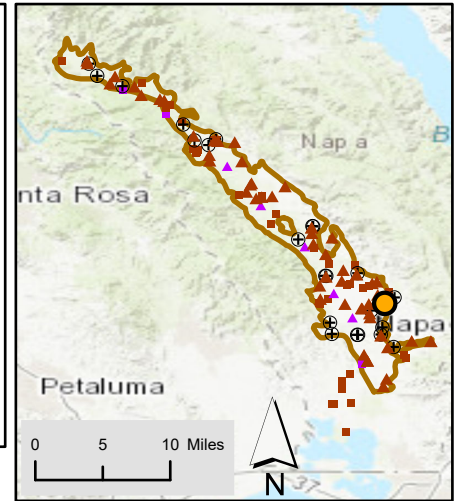
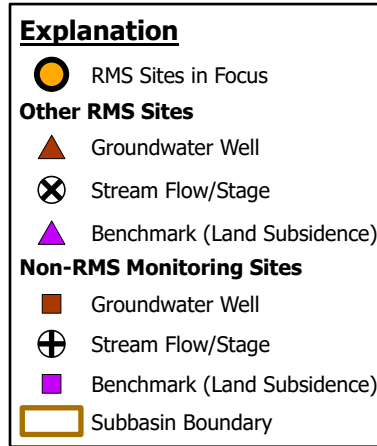
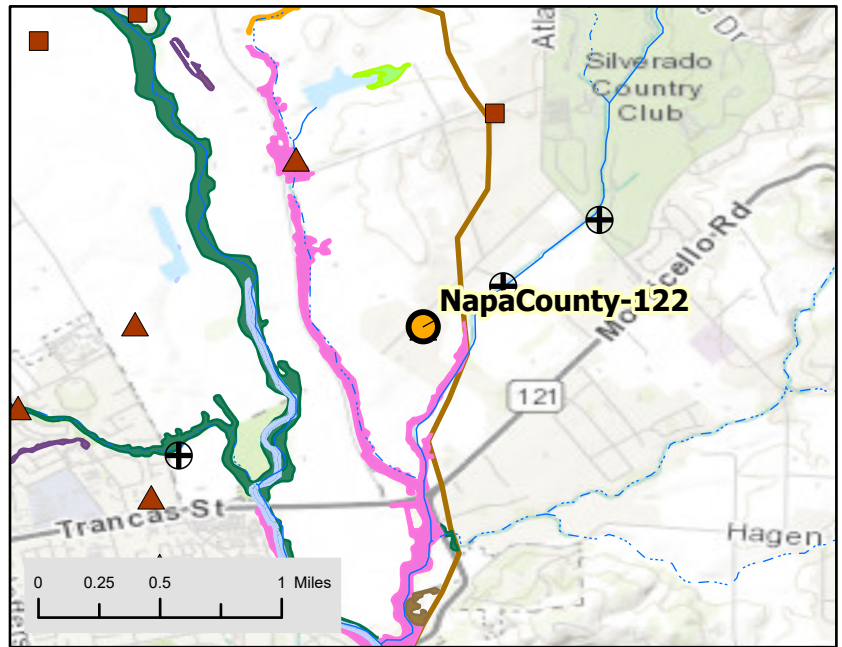
Location Description

Latitude/Longitude: 38.33565/-122.274472

Ground Surface Elevation (ft amsl): 58.65

Distance to Perennial Stream (ft): 900

Alluvial Thickness (ft): 230



Well Name:
NapaCounty-132

Monitoring Network

SGMA Representative Monitoring Network

SGMA Sustainability Indicator(s)

Groundwater Levels (GWL), Land Subsidence (LS)

Supplemental Indicator(s)

NA

Well Identification

SWN: 007N005W14B002M
MNM: 384616N1223811W001

Well Construction

Well Type: Irrigation well
Well Depth (ft bgs): 265
Top of Perforation (ft bgs): 25
Bottom of Perforation (ft bgs): 265
Well Completion Report Available? Yes

Monitoring Information

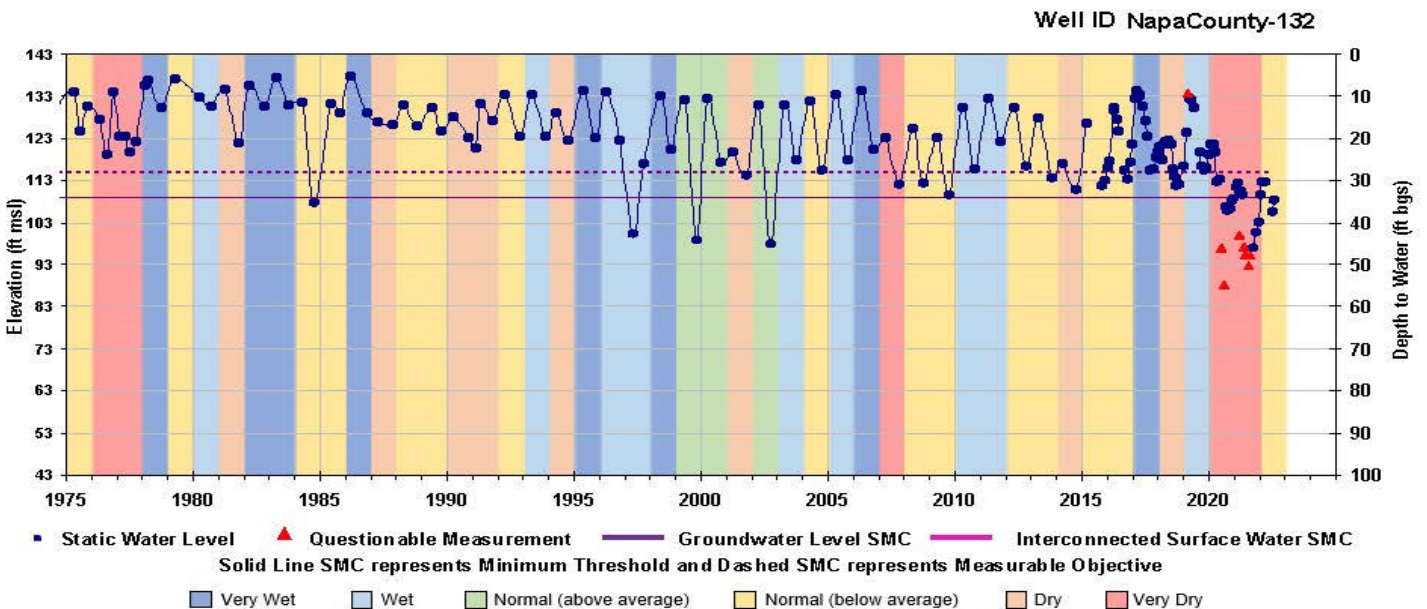
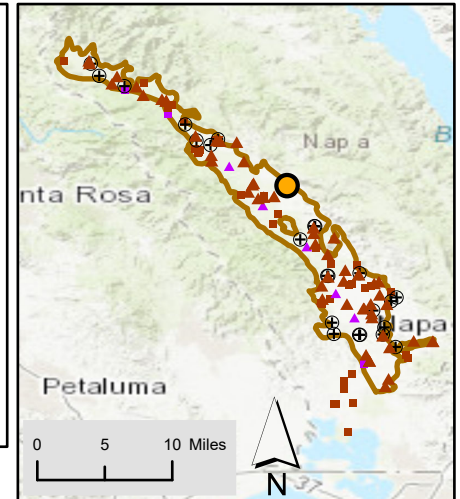
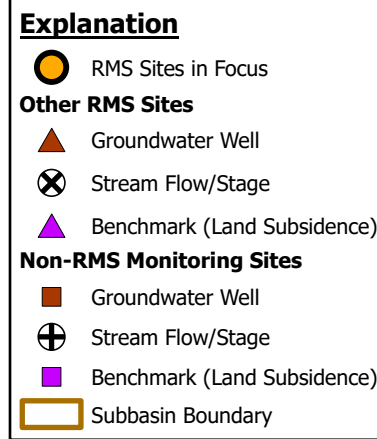
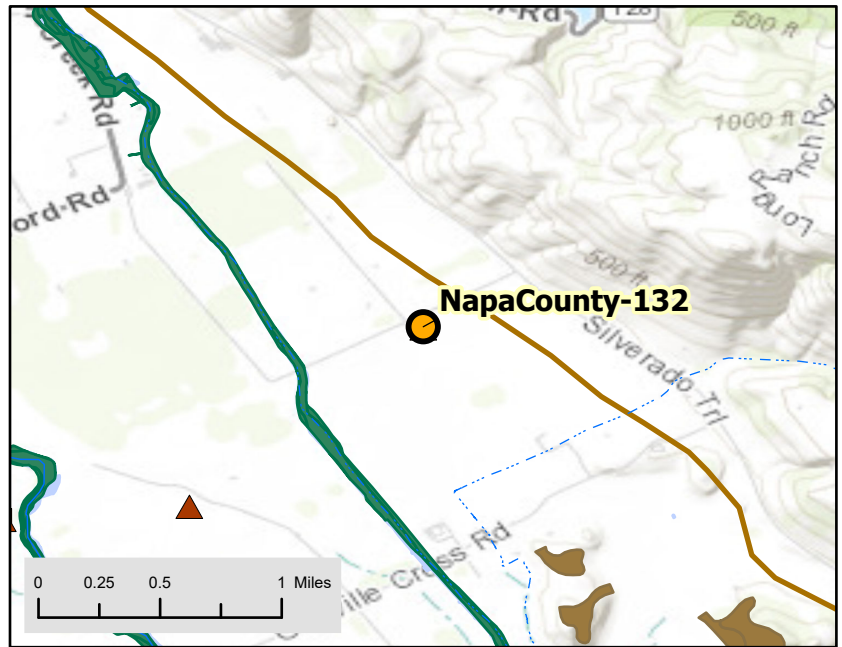
Monitoring Frequency: Monthly GWL
Measurable Objectives (MO) and Minimum Thresholds (MT) (ft amsl):
GWL MO = 115.0; MT = 109.0

Groundwater Level Observation

Most Recent Water Level:
Measurement Date: 7/26/2022
Depth below ground surface (ft): 33.65
Elevation (ft amsl): 108.35

Location Description

Latitude/Longitude: 38.4616/-122.3811
Ground Surface Elevation (ft amsl): 142.00
Distance to Perennial Stream (ft): 2,300
Alluvial Thickness (ft): 90



Well Name:
NapaCounty-133

Monitoring Network

SGMA Representative Monitoring Network

SGMA Sustainability Indicator(s)

Groundwater Levels (GWL), Land Subsidence (LS)

Supplemental Indicator(s)

Interconnected Surface Water

Well Identification

SWN: 007N004W31M001M

MNM: 384116N1223530W001

Well Construction

Well Type: Domestic well

Well Depth (ft bgs): 120

Top of Perforation (ft bgs): 20

Bottom of Perforation (ft bgs): 120

Well Completion Report Available? Yes

Monitoring Information

Monitoring Frequency: Monthly GWL

Measurable Objectives (MO) and Minimum Thresholds (MT) (ft amsl):

GWL MO = 75.0; MT = 73.0

Groundwater Level Observation

Most Recent Water Level:

Measurement Date: 7/26/2022

Depth below ground surface (ft): 18.62

Elevation (ft amsl): 74.08

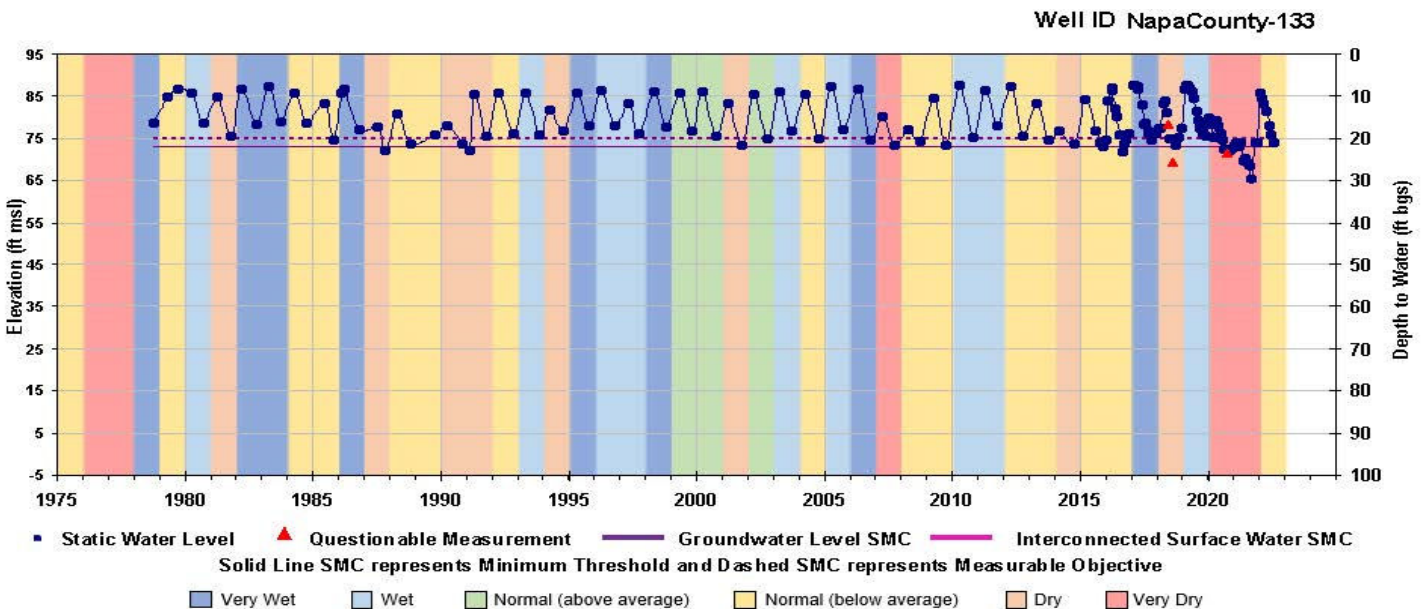
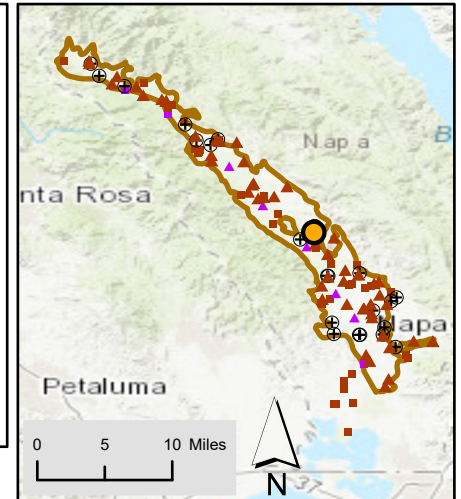
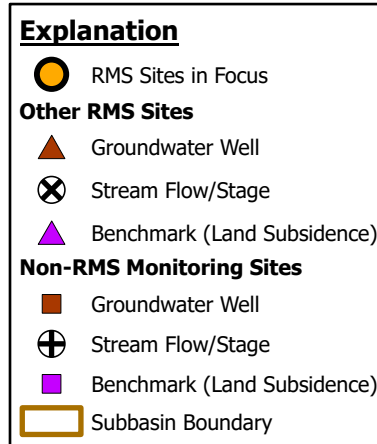
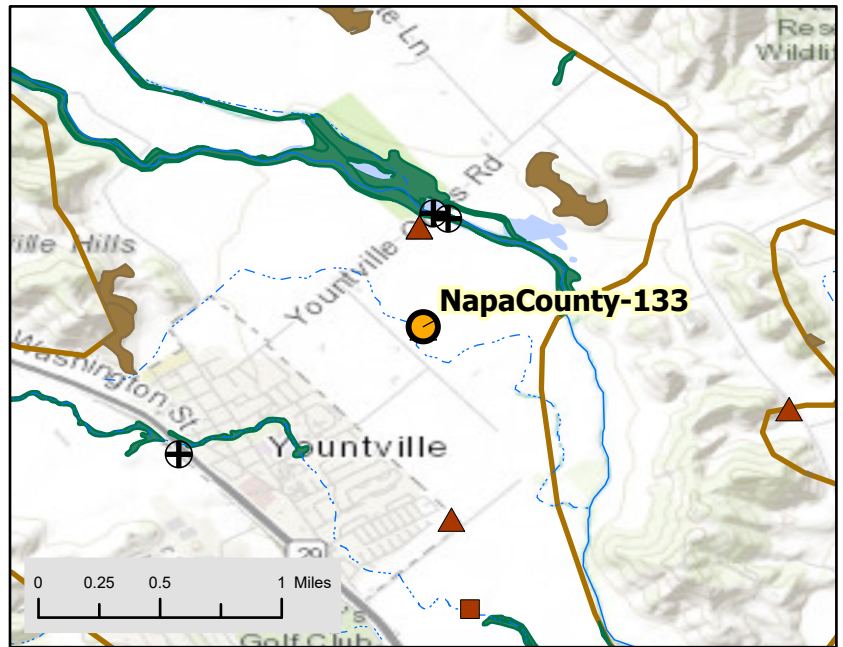
Location Description

Latitude/Longitude: 38.411578/-122.352477

Ground Surface Elevation (ft amsl): 92.70

Distance to Perennial Stream (ft): 40

Alluvial Thickness (ft): 210



Well Name:
NapaCounty-135

Monitoring Network

SGMA Representative Monitoring Network

SGMA Sustainability Indicator(s)

Groundwater Levels (GWL), Land Subsidence (LS)

Supplemental Indicator(s)

NA

Well Identification

SWN: 006N004W19B001M
MNM: 383554N1223441W001

Well Construction

Well Type: Irrigation well
Well Depth (ft bgs): 125
Top of Perforation (ft bgs): NA
Bottom of Perforation (ft bgs): NA
Well Completion Report Available? Yes

Monitoring Information

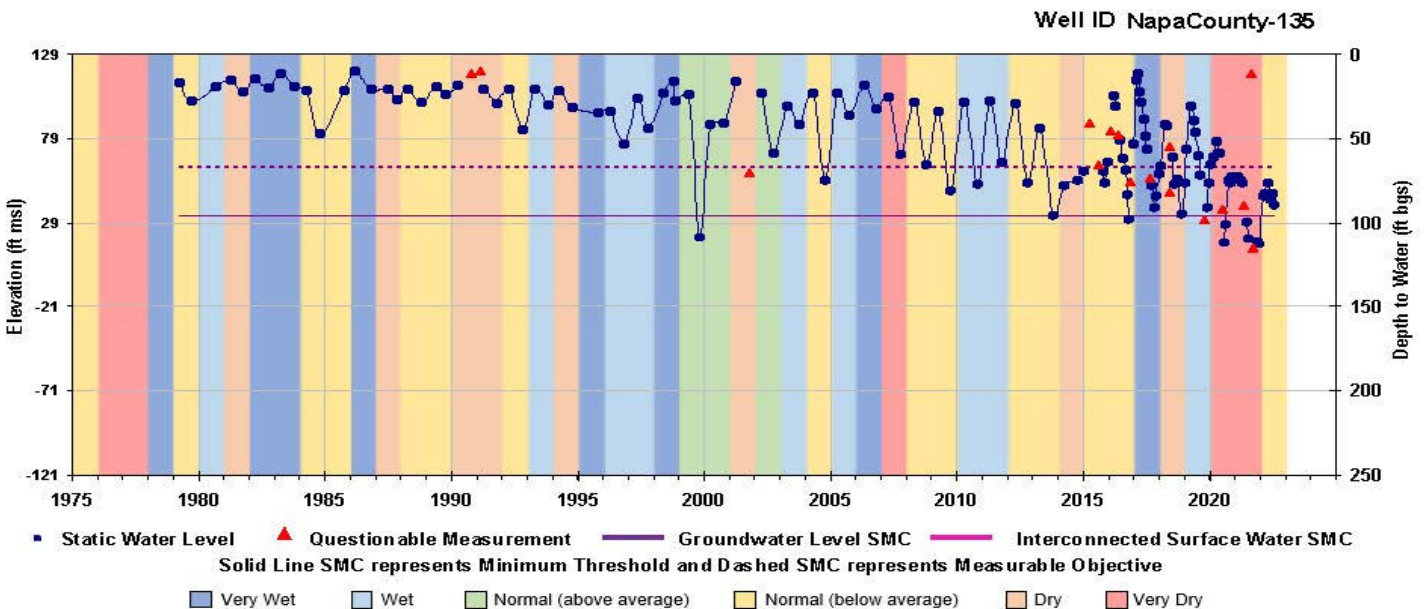
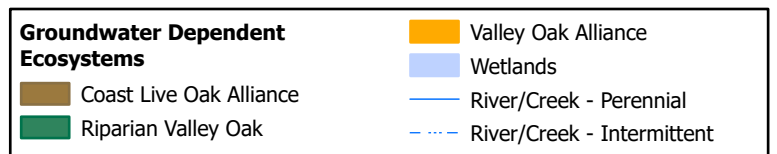
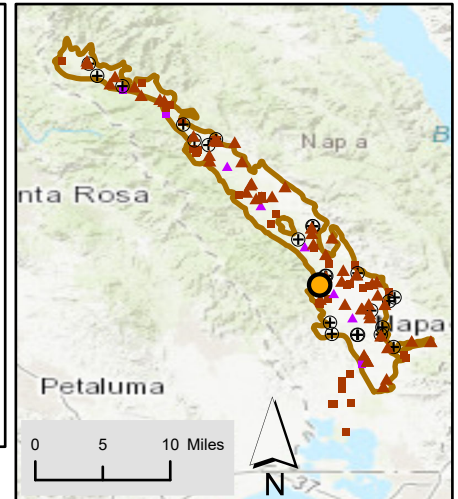
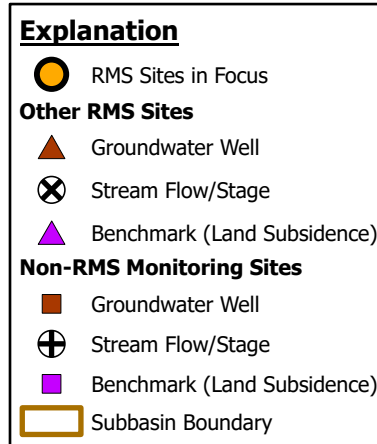
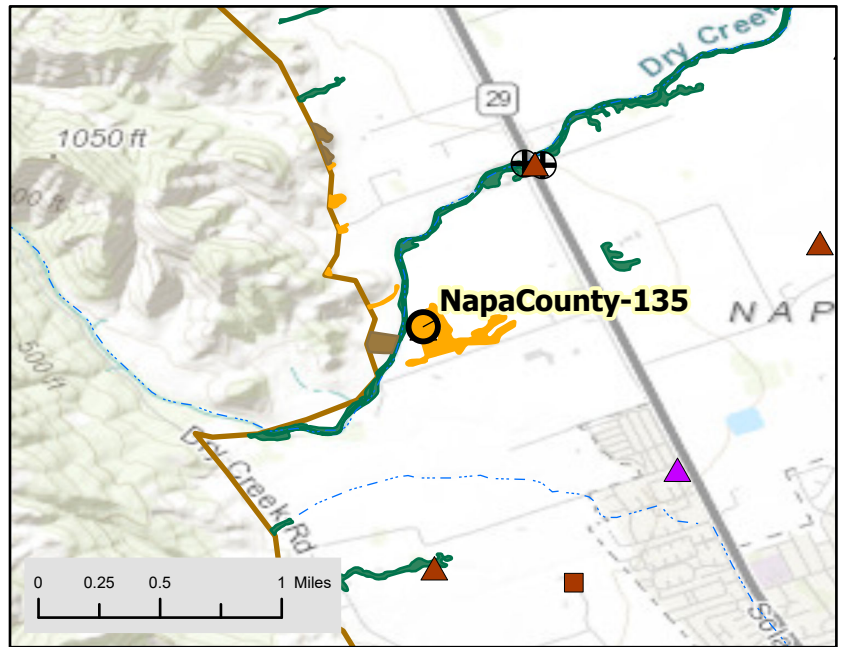
Monitoring Frequency: Monthly GWL
Measurable Objectives (MO) and Minimum Thresholds (MT) (ft amsl):
GWL MO = 62.0; MT = 33.0

Groundwater Level Observation

Most Recent Water Level:
Measurement Date: 7/26/2022
Depth below ground surface (ft): 88.07
Elevation (ft amsl): 39.63

Location Description

Latitude/Longitude: 38.3554/-122.3441
Ground Surface Elevation (ft amsl): 127.70
Distance to Perennial Stream (ft): 300
Alluvial Thickness (ft): 100



Well Name:
NapaCounty-152

Monitoring Network
SGMA Representative Monitoring Network

SGMA Sustainability Indicator(s)
Groundwater Levels (GWL)

Supplemental Indicator(s)
NA

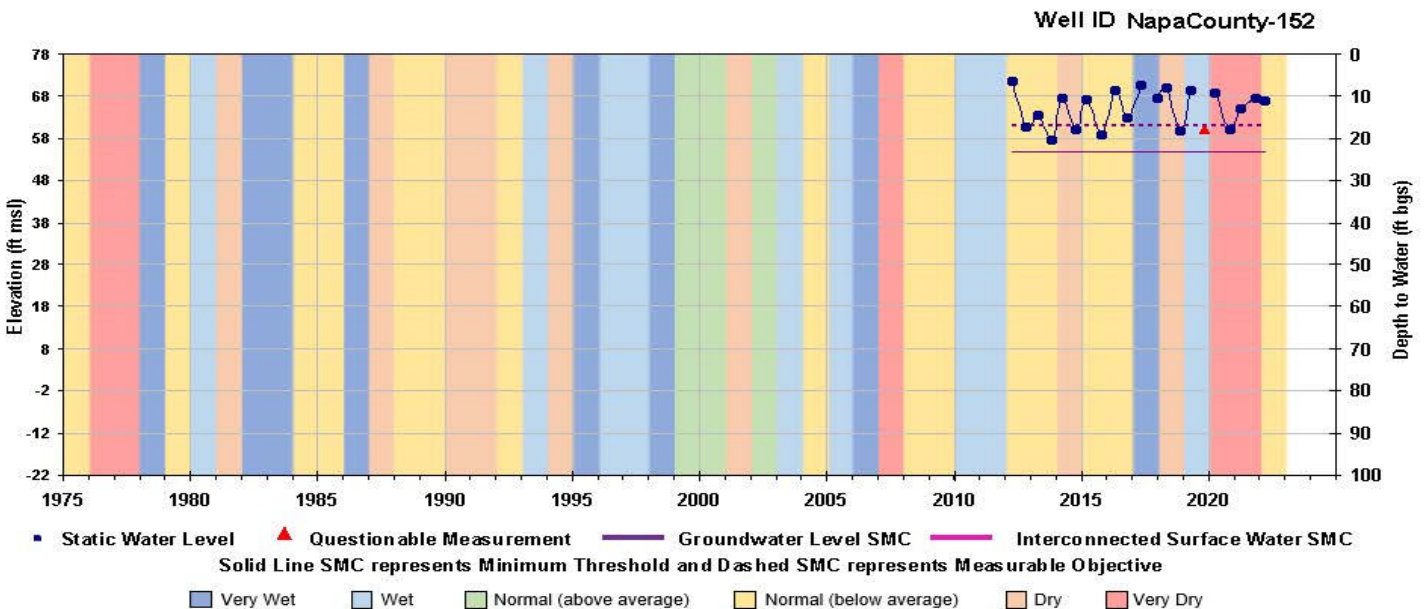
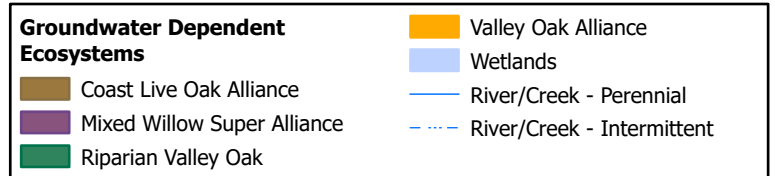
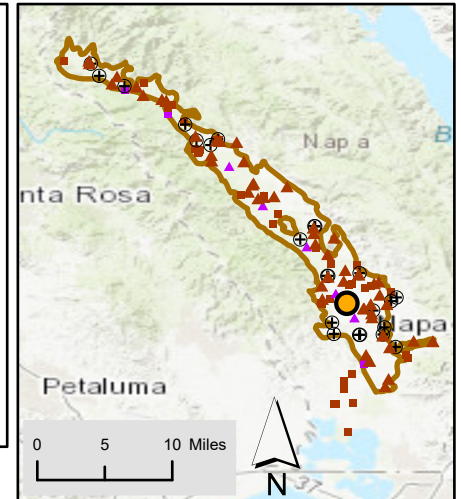
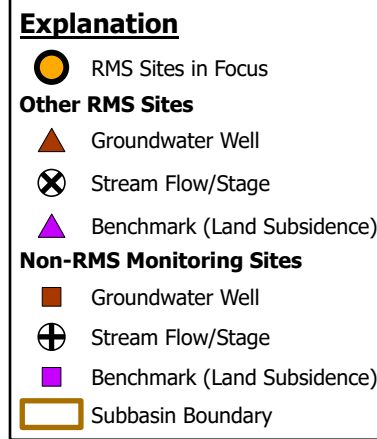
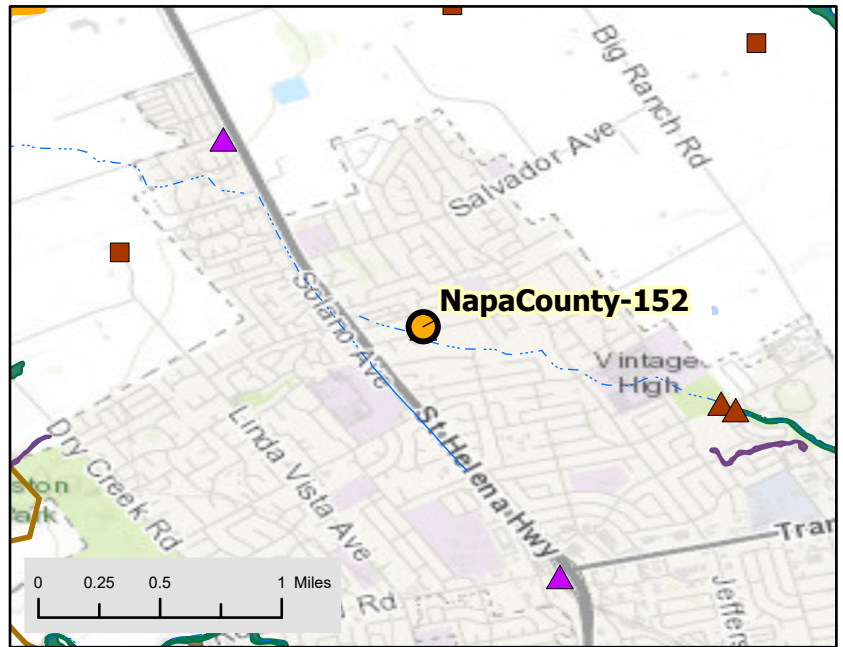
Well Identification
SWN: 006N004W28Mx
MNM: 383358N1223171W001

Well Construction
Well Type: Domestic well
Well Depth (ft bgs): 104
Top of Perforation (ft bgs): NA
Bottom of Perforation (ft bgs): NA
Well Completion Report Available? No

Monitoring Information
Monitoring Frequency: Semi-Annual GWL
Measurable Objectives (MO) and Minimum Thresholds (MT) (ft amsl):
GWL MO = 61.0; MT = 55.0

Groundwater Level Observation
Most Recent Water Level:
Measurement Date: 3/15/2022
Depth below ground surface (ft): 10.34
Elevation (ft amsl): 66.96

Location Description
Latitude/Longitude: 38.335773/-122.317117
Ground Surface Elevation (ft amsl): 77.30
Distance to Perennial Stream (ft): 300
Alluvial Thickness (ft): > 400



Well Name:
NapaCounty-171

Monitoring Network
SGMA Representative Monitoring Network

SGMA Sustainability Indicator(s)
Groundwater Levels (GWL), Land Subsidence (LS)

Supplemental Indicator(s)
NA

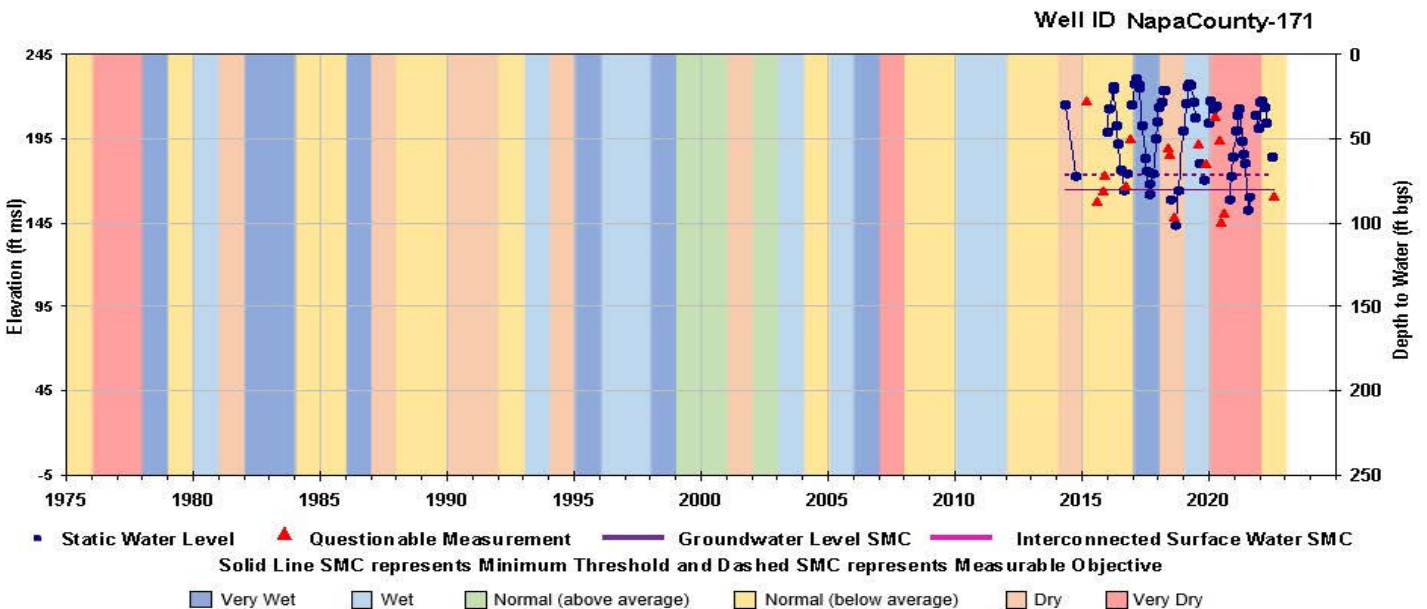
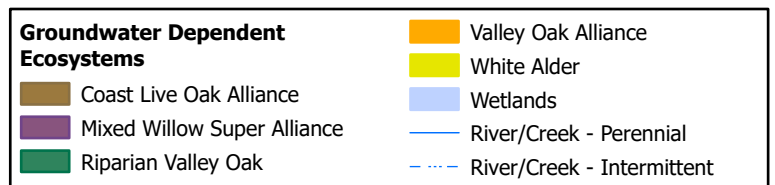
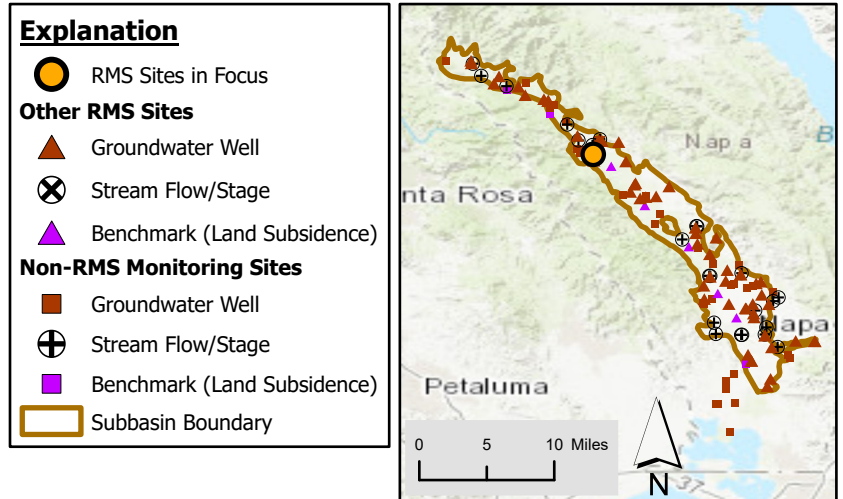
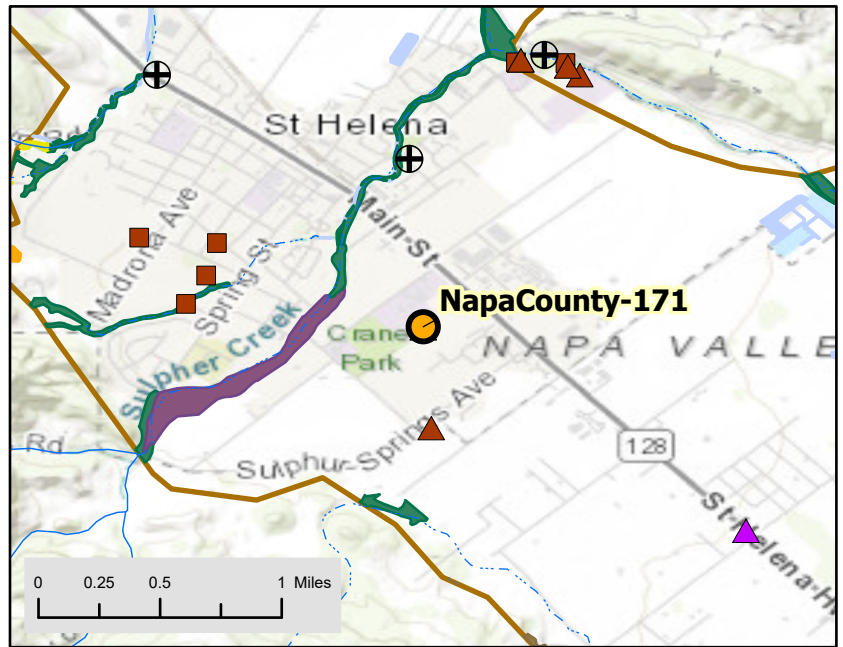
Well Identification
SWN: NA
MNM: 384950N1224621W001

Well Construction
Well Type: Irrigation well
Well Depth (ft bgs): 438
Top of Perforation (ft bgs): 118
Bottom of Perforation (ft bgs): 438
Well Completion Report Available? Yes

Monitoring Information
Monitoring Frequency: Monthly GWL
Measurable Objectives (MO) and Minimum Thresholds (MT) (ft amsl):
GWL MO = 173.0; MT = 165.0

Groundwater Level Observation
Most Recent Water Level:
Measurement Date: 7/26/2022
Depth below ground surface (ft): 83.20
Elevation (ft amsl): 160.80

Location Description
Latitude/Longitude: 38.495026/-122.462173
Ground Surface Elevation (ft amsl): 244.00
Distance to Perennial Stream (ft): 1,700
Alluvial Thickness (ft): > 400



Well Name:
NapaCounty-216s-swgw2

Monitoring Network
SGMA Representative Monitoring Network

SGMA Sustainability Indicator(s)
Groundwater Levels (GWL), Interconnected Surface Water (ISW)

Supplemental Indicator(s)
Groundwater Quality, Groundwater Dependent Ecosystems

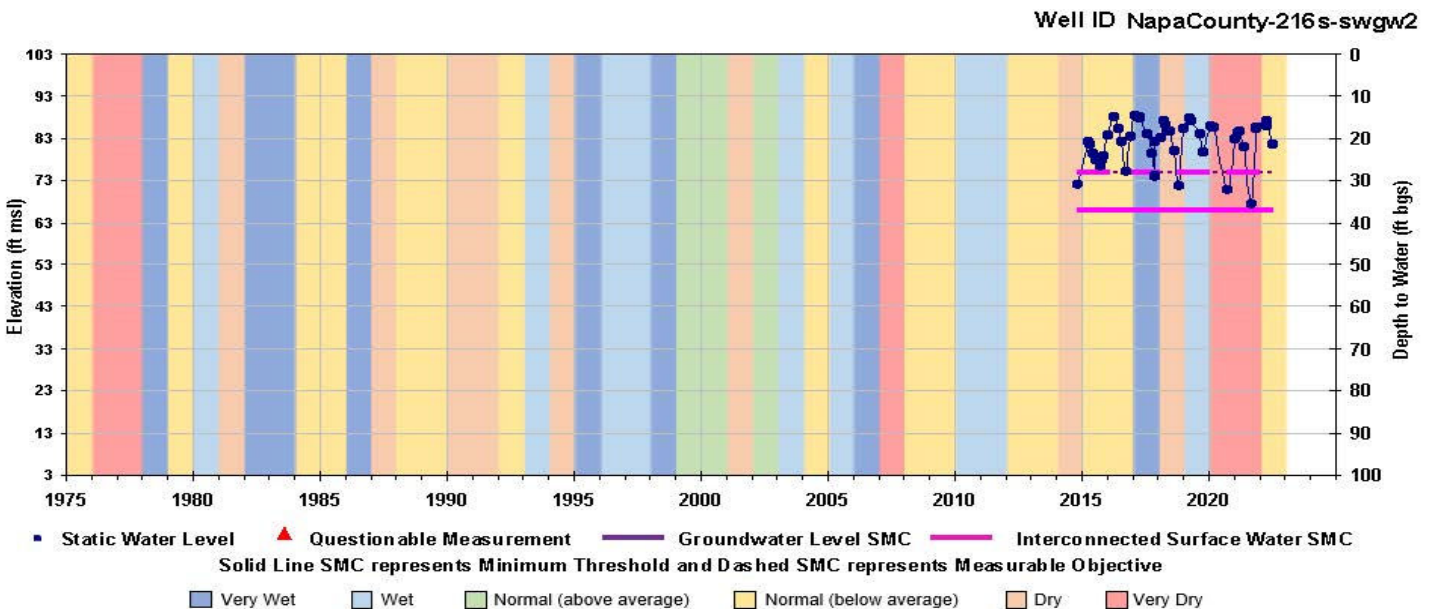
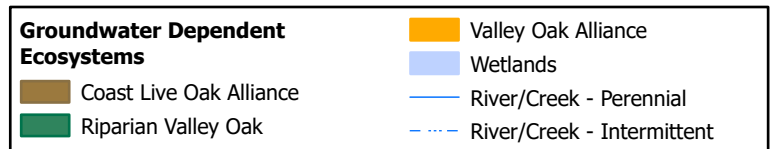
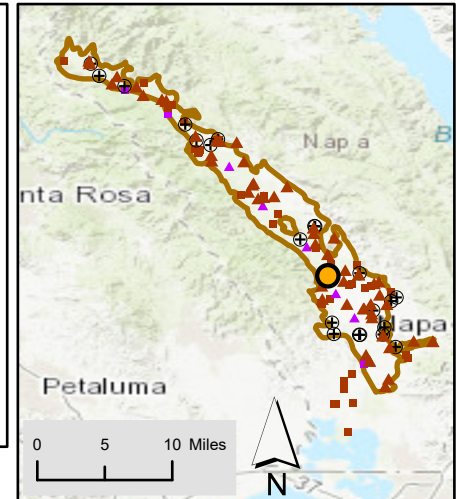
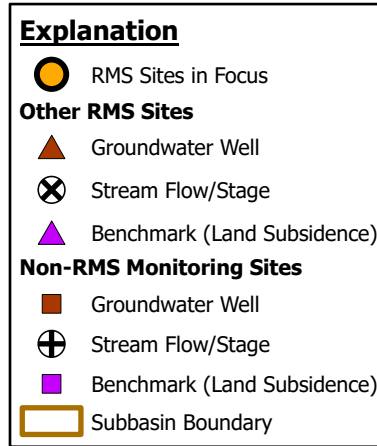
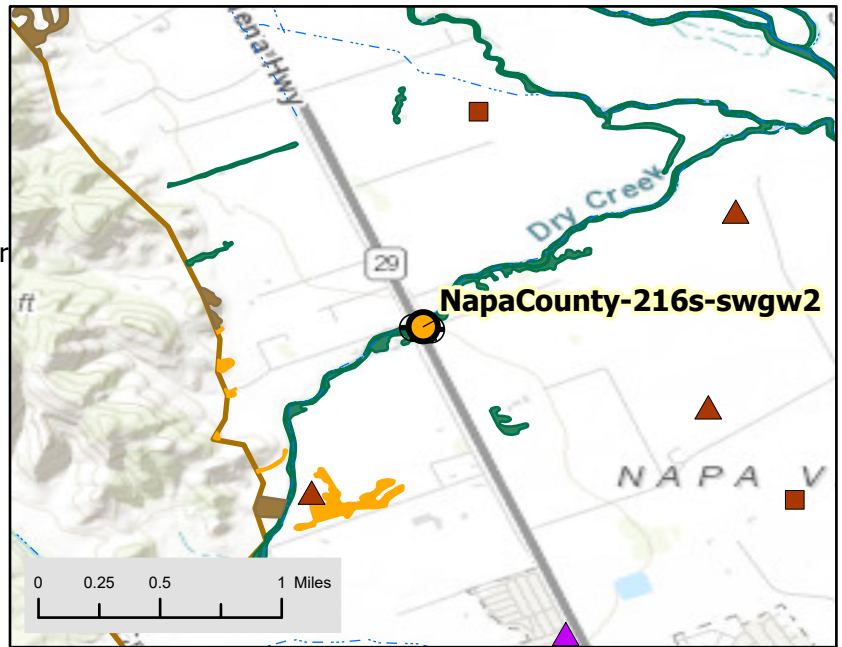
Well Identification
SWN: 06N04W18J003M
MNM: 383652N1223375W001

Well Construction
Well Type: Monitoring well
Well Depth (ft bgs): 50
Top of Perforation (ft bgs): 25
Bottom of Perforation (ft bgs): 45
Well Completion Report Available? Yes

Monitoring Information
Monitoring Frequency: Daily GWL, Semi-Annual GWQ
Measurable Objectives (MO) and Minimum Thresholds (MT) (ft amsl):
GWL MO = 75.0; MT = 66.0
ISW MO = 75.0; MT = 66.0

Groundwater Level Observation
Most Recent Water Level:
Measurement Date: 7/12/2022
Depth below ground surface (ft): NA
Elevation (ft amsl): 84.51

Location Description
Latitude/Longitude: 38.365159/-122.337464
Ground Surface Elevation (ft amsl): 103.41
Distance to Perennial Stream (ft): 90
Alluvial Thickness (ft): 100



Well Name:
NapaCounty-217d-swgw2

Monitoring Network
SGMA Representative Monitoring Network

SGMA Sustainability Indicator(s)
Groundwater Levels (GWL)

Supplemental Indicator(s)
Groundwater Quality, Interconnected Surface Water, Groundwater Dependent Ecosystems

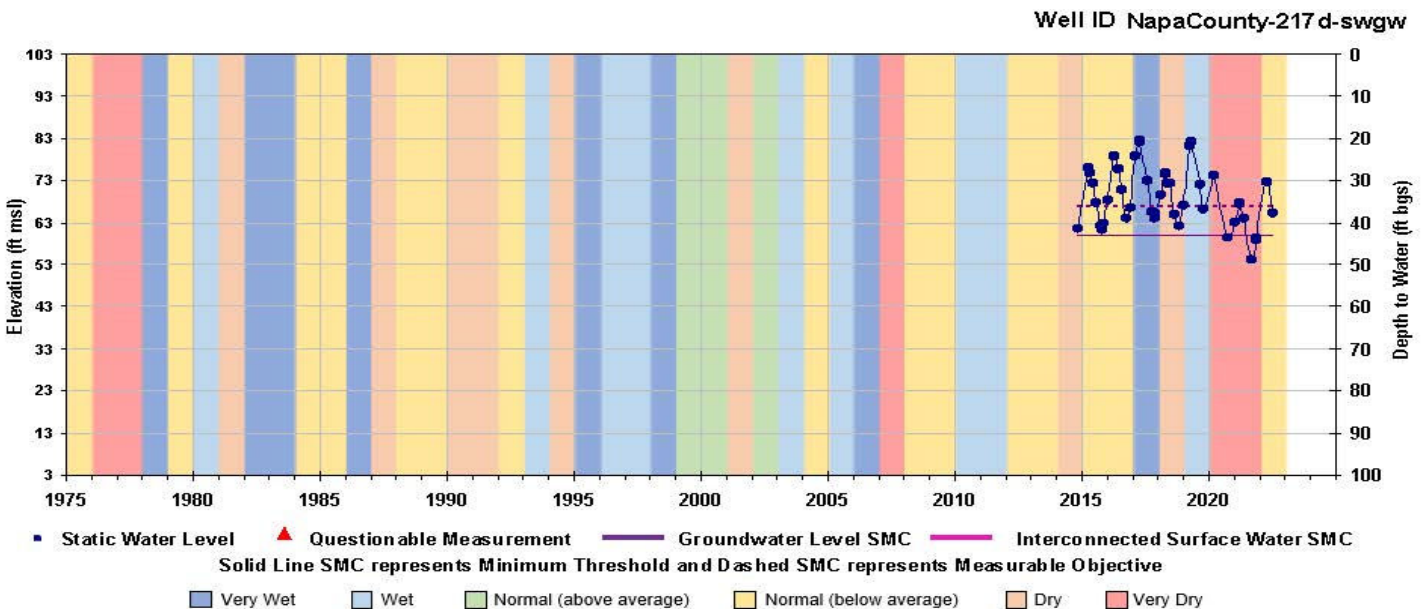
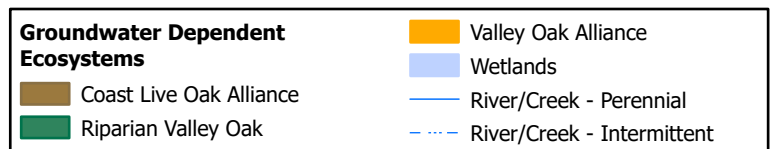
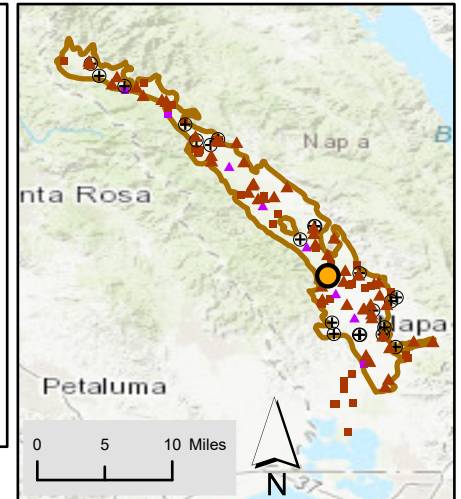
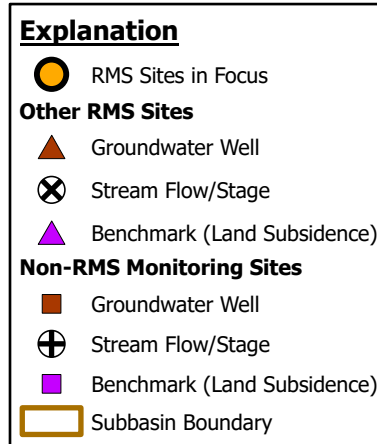
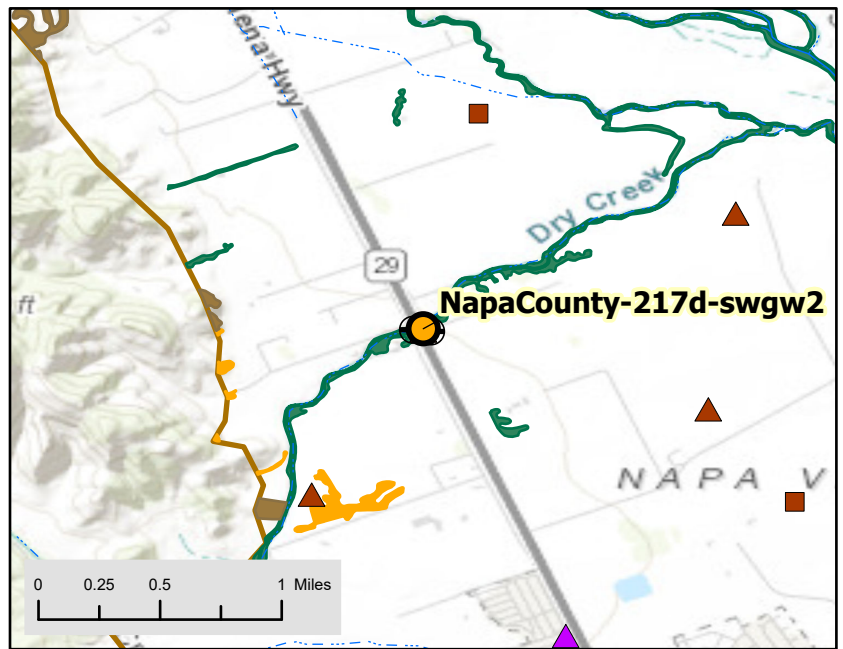
Well Identification
SWN: 06N04W18J004M
MNM: 383652N1223375W002

Well Construction
Well Type: Monitoring well
Well Depth (ft bgs): 86
Top of Perforation (ft bgs): 71
Bottom of Perforation (ft bgs): 81
Well Completion Report Available? Yes

Monitoring Information
Monitoring Frequency: Daily GWL, Semi-Annual GWQ
Measurable Objectives (MO) and Minimum Thresholds (MT) (ft amsl):
GWL MO = 67.0; MT = 60.0

Groundwater Level Observation
Most Recent Water Level:
Measurement Date: 7/12/2022
Depth below ground surface (ft): NA
Elevation (ft amsl): 67.97

Location Description
Latitude/Longitude: 38.365159/-122.337464
Ground Surface Elevation (ft amsl): 103.41
Distance to Perennial Stream (ft): 90
Alluvial Thickness (ft): 100



Well Name:
NapaCounty-218s-swgw3

Monitoring Network
 SGMA Representative Monitoring Network

SGMA Sustainability Indicator(s)
 Groundwater Levels (GWL), Interconnected Surface Water (ISW)

Supplemental Indicator(s)
 Groundwater Quality, Groundwater Dependent Ecosystems

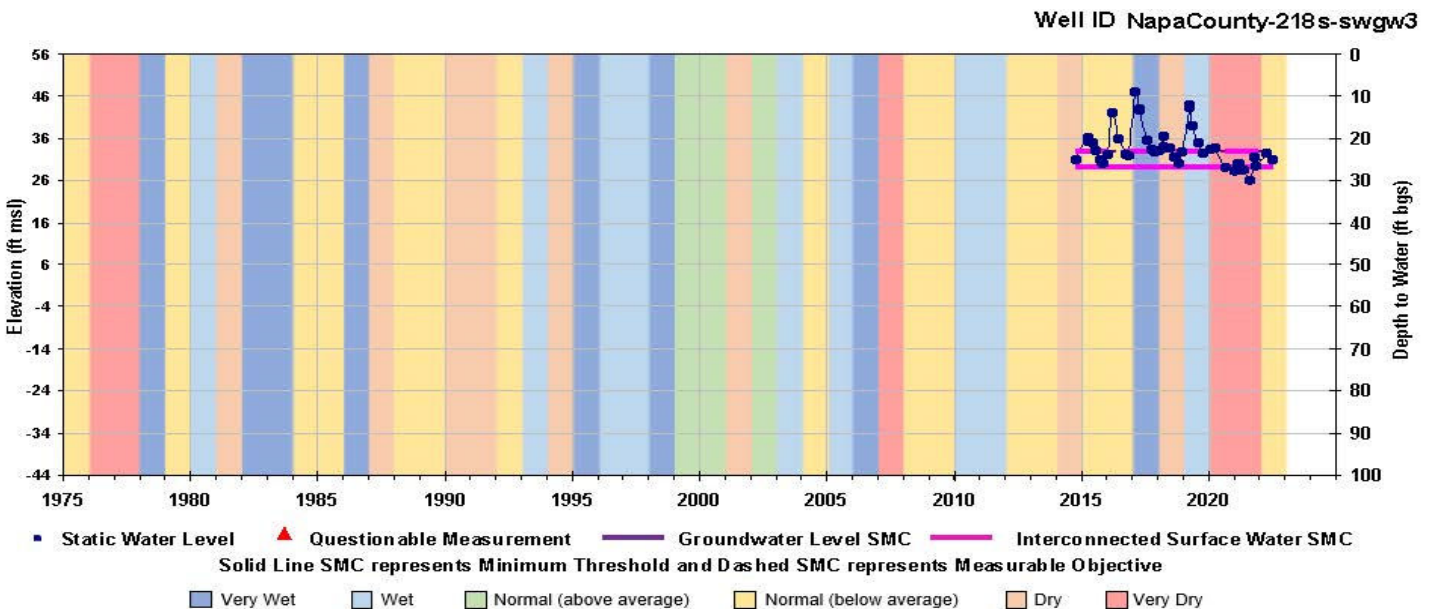
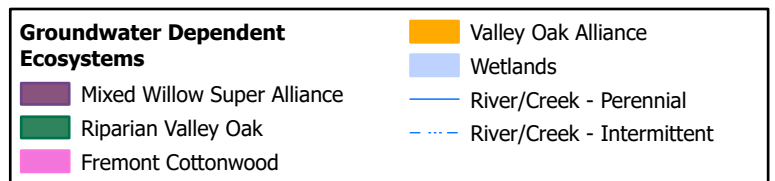
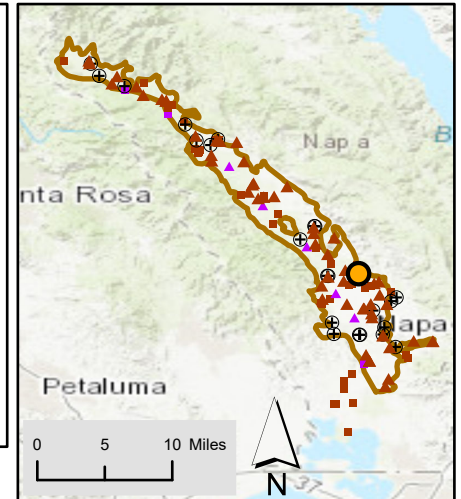
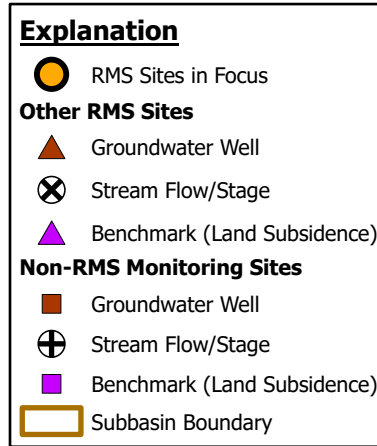
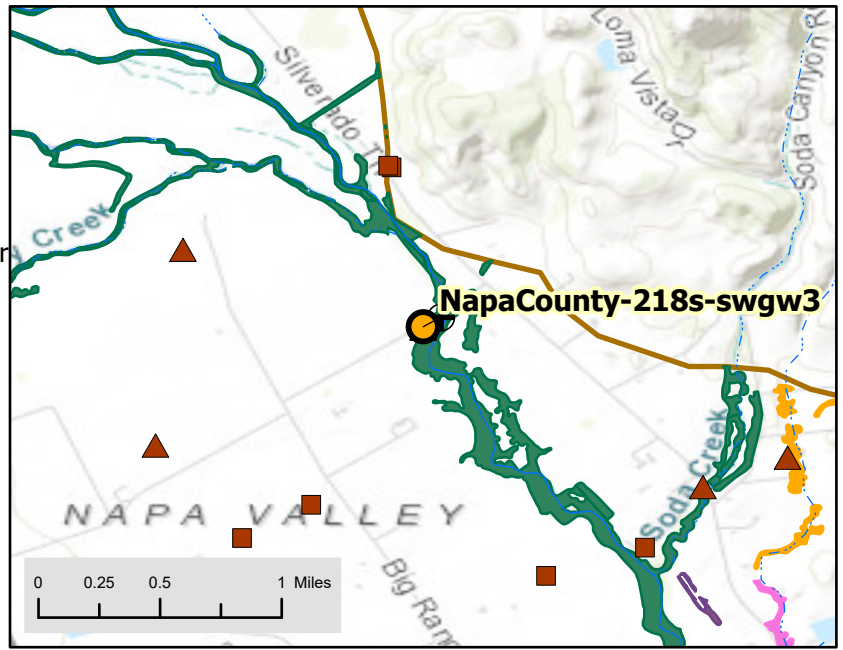
Well Identification
 SWN: 06N04W16G001M
 MNM: 383674N1223046W001

Well Construction
 Well Type: Monitoring well
 Well Depth (ft bgs): 40
 Top of Perforation (ft bgs): 25
 Bottom of Perforation (ft bgs): 35
 Well Completion Report Available? Yes

Monitoring Information
 Monitoring Frequency: Daily GWL, Semi-Annual GWQ
 Measurable Objectives (MO) and Minimum Thresholds (MT) (ft amsl):
 GWL MO = 33.0; MT = 29.0
 ISW MO = 33.0; MT = 29.0

Groundwater Level Observation
 Most Recent Water Level:
 Measurement Date: 7/12/2022
 Depth below ground surface (ft): NA
 Elevation (ft amsl): 27.62

Location Description
 Latitude/Longitude: 38.367428/-122.304619
 Ground Surface Elevation (ft amsl): 56.32
 Distance to Perennial Stream (ft): 300
 Alluvial Thickness (ft): 100



Well Name:
NapaCounty-219d-swgw3

Monitoring Network
 SGMA Representative Monitoring Network

SGMA Sustainability Indicator(s)
 Groundwater Levels (GWL)

Supplemental Indicator(s)
 Groundwater Quality, Interconnected Surface Water, Groundwater Dependent Ecosystems

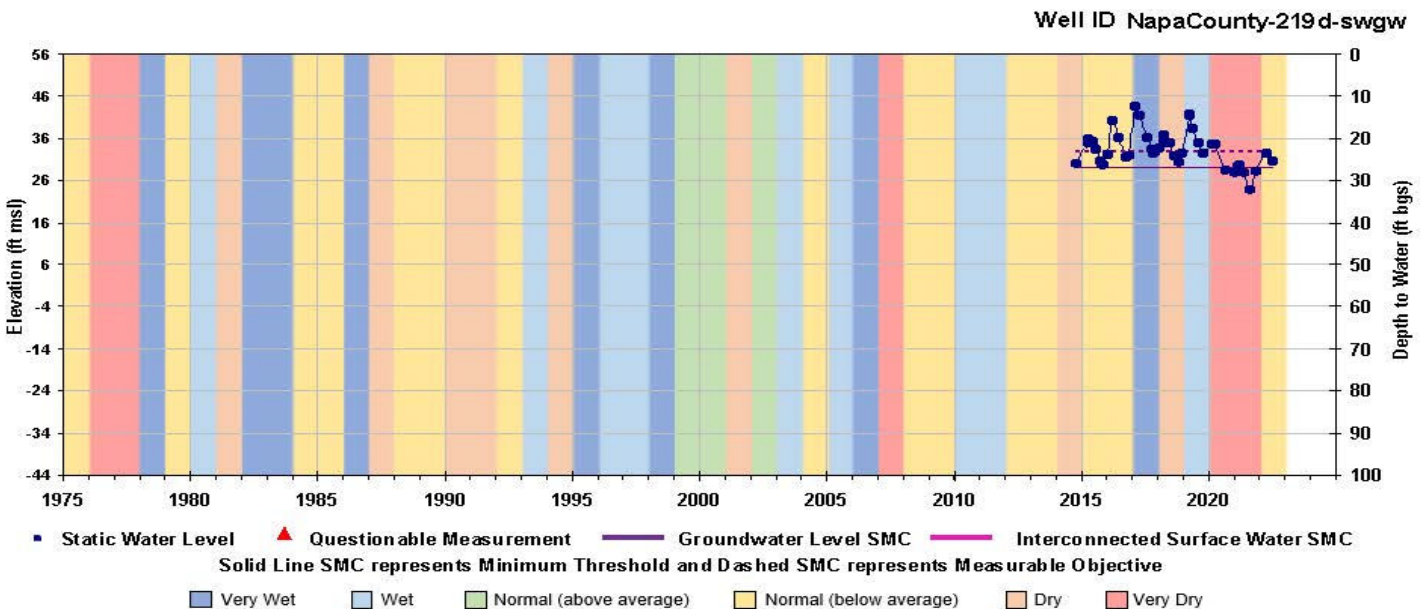
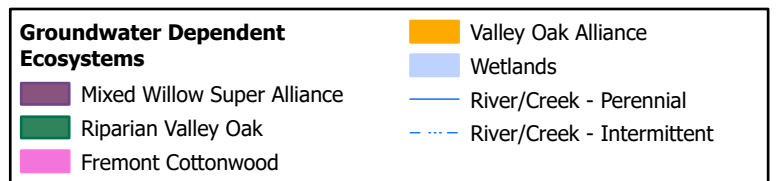
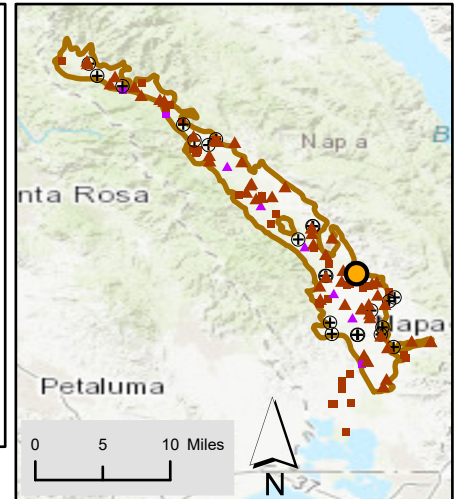
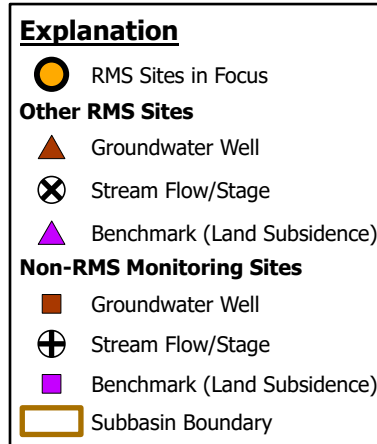
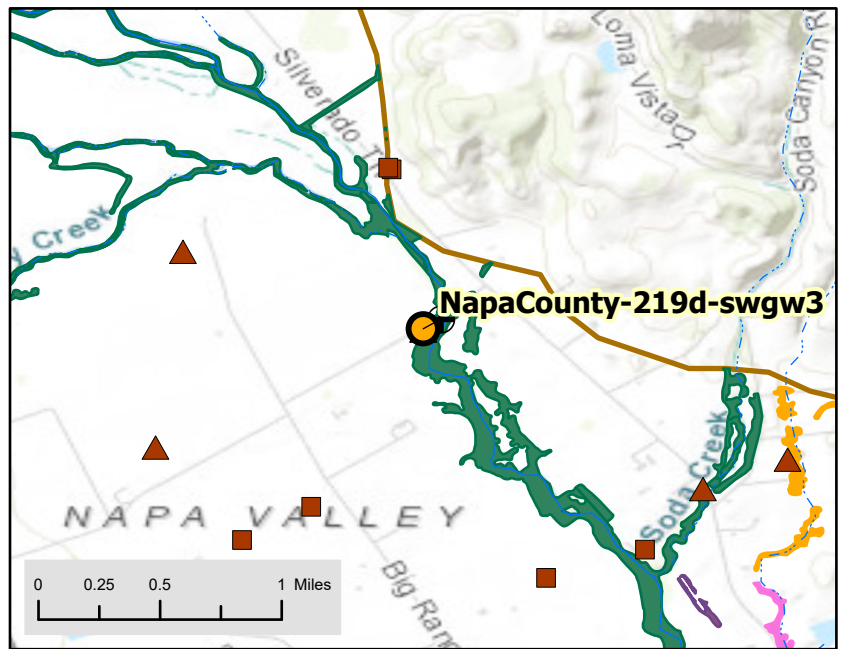
Well Identification
 SWN: 06N04W16G002M
 MNM: 383674N1223046W002

Well Construction
 Well Type: Monitoring well
 Well Depth (ft bgs): 93
 Top of Perforation (ft bgs): 78
 Bottom of Perforation (ft bgs): 88
 Well Completion Report Available? Yes

Monitoring Information
 Monitoring Frequency: Daily GWL, Semi-Annual GWQ
 Measurable Objectives (MO) and Minimum Thresholds (MT) (ft amsl):
 GWL MO = 33.0; MT = 29.0

Groundwater Level Observation
 Most Recent Water Level:
 Measurement Date: 7/12/2022
 Depth below ground surface (ft): NA
 Elevation (ft amsl): 27.20

Location Description
 Latitude/Longitude: 38.367428/-122.304619
 Ground Surface Elevation (ft amsl): 56.32
 Distance to Perennial Stream (ft): 300
 Alluvial Thickness (ft): 100



Well Name:
NapaCounty-220s-swgw4

Monitoring Network
 SGMA Representative Monitoring Network

SGMA Sustainability Indicator(s)
 Groundwater Levels (GWL), Interconnected Surface Water (ISW)

Supplemental Indicator(s)
 Groundwater Quality, Groundwater Dependent Ecosystems

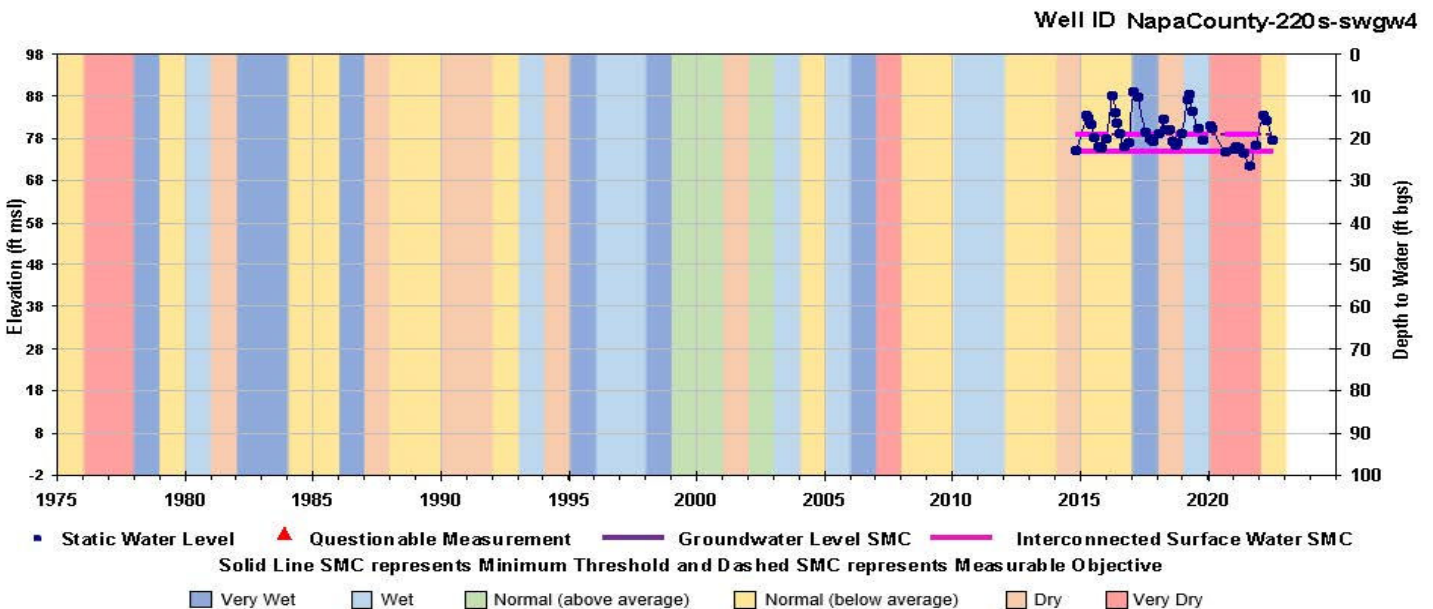
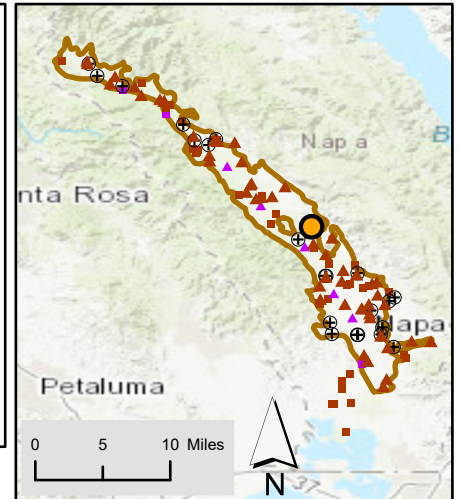
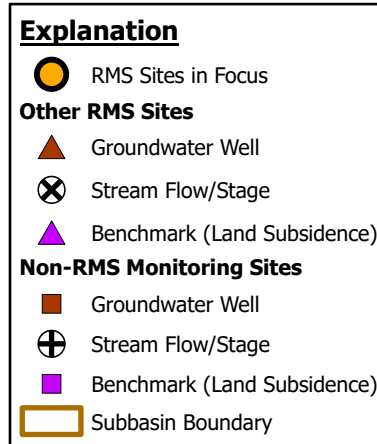
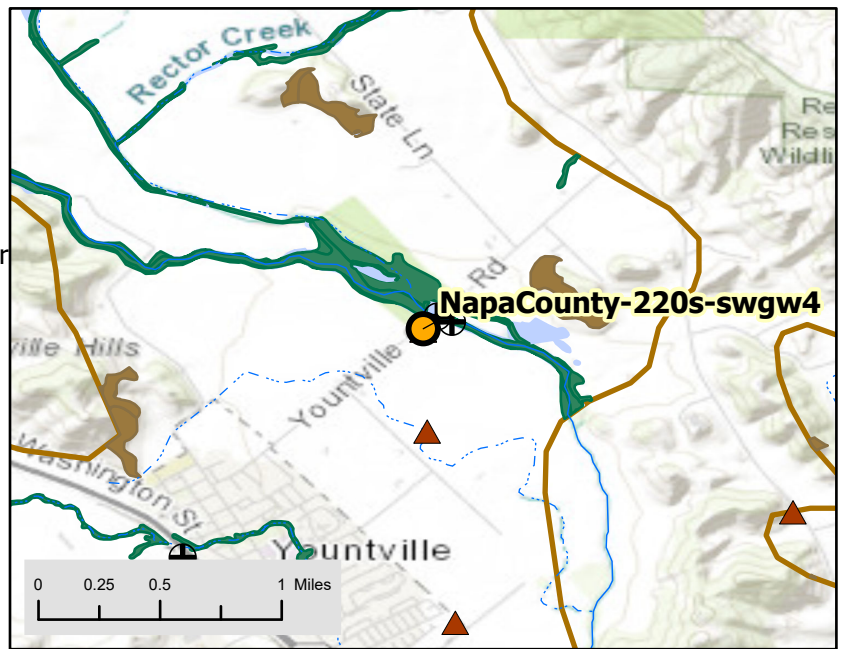
Well Identification
 SWN: 07N04W31D001M
 MNM: 384176N1223527W001

Well Construction
 Well Type: Monitoring well
 Well Depth (ft bgs): 45
 Top of Perforation (ft bgs): 25
 Bottom of Perforation (ft bgs): 40
 Well Completion Report Available? Yes

Monitoring Information
 Monitoring Frequency: Daily GWL, Semi-Annual GWQ
 Measurable Objectives (MO) and Minimum Thresholds (MT) (ft amsl):
 GWL MO = 79.0; MT = 75.0
 ISW MO = 79.0; MT = 75.0

Groundwater Level Observation
 Most Recent Water Level:
 Measurement Date: 7/12/2022
 Depth below ground surface (ft): NA
 Elevation (ft amsl): 79.13

Location Description
 Latitude/Longitude: 38.417589/-122.352706
 Ground Surface Elevation (ft amsl): 98.40
 Distance to Perennial Stream (ft): 300
 Alluvial Thickness (ft): 90



Well Name:
NapaCounty-221d-swgw4

Monitoring Network
 SGMA Representative Monitoring Network

SGMA Sustainability Indicator(s)
 Groundwater Levels (GWL)

Supplemental Indicator(s)
 Groundwater Quality, Interconnected Surface Water,
 Groundwater Dependent Ecosystems

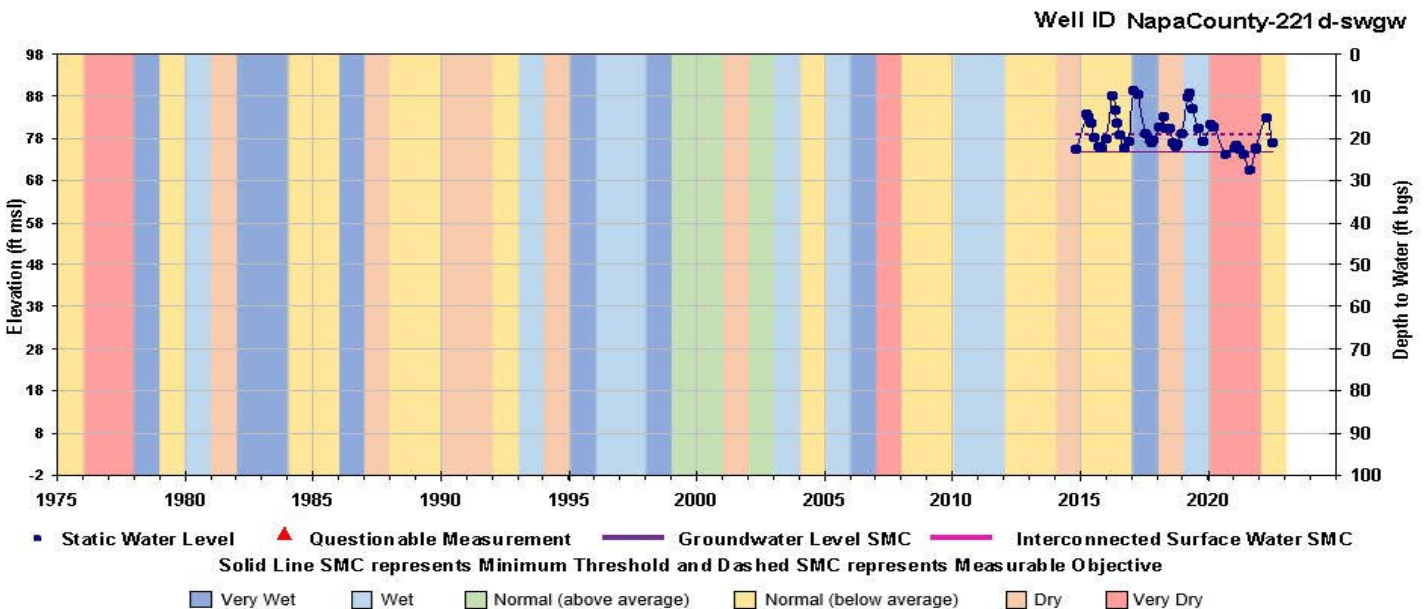
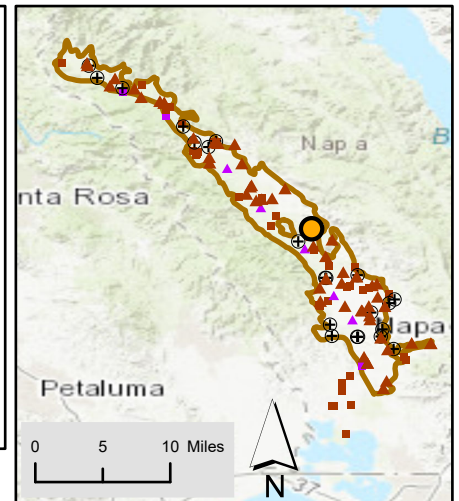
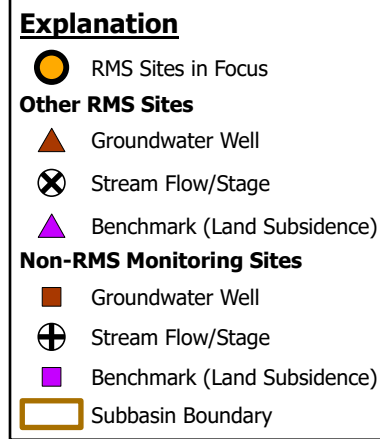
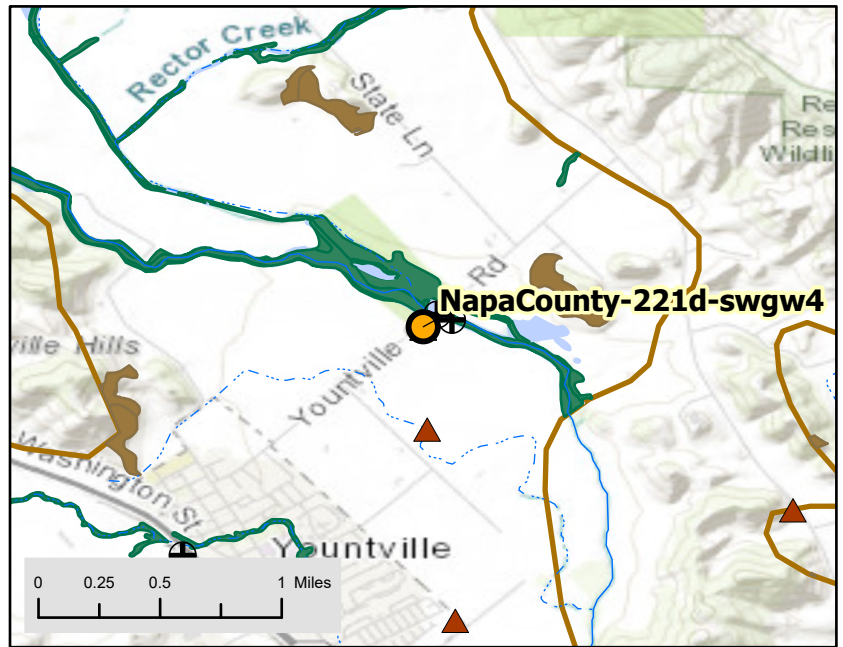
Well Identification
 SWN: 07N04W31D002M
 MNM: 384176N1223527W002

Well Construction
 Well Type: Monitoring well
 Well Depth (ft bgs): 85
 Top of Perforation (ft bgs): 70
 Bottom of Perforation (ft bgs): 80
 Well Completion Report Available? Yes

Monitoring Information
 Monitoring Frequency: Daily GWL, Semi-Annual GWQ
 Measurable Objectives (MO) and Minimum Thresholds (MT) (ft amsl):
 GWL MO = 79.0; MT = 75.0

Groundwater Level Observation
 Most Recent Water Level:
 Measurement Date: 7/12/2022
 Depth below ground surface (ft): NA
 Elevation (ft amsl): 78.41

Location Description
 Latitude/Longitude: 38.417589/-122.352706
 Ground Surface Elevation (ft amsl): 98.40
 Distance to Perennial Stream (ft): 300
 Alluvial Thickness (ft): 90



Well Name:
NapaCounty-222s-swgw5

Monitoring Network
SGMA Representative Monitoring Network

SGMA Sustainability Indicator(s)
Groundwater Levels (GWL), Interconnected Surface Water (ISW)

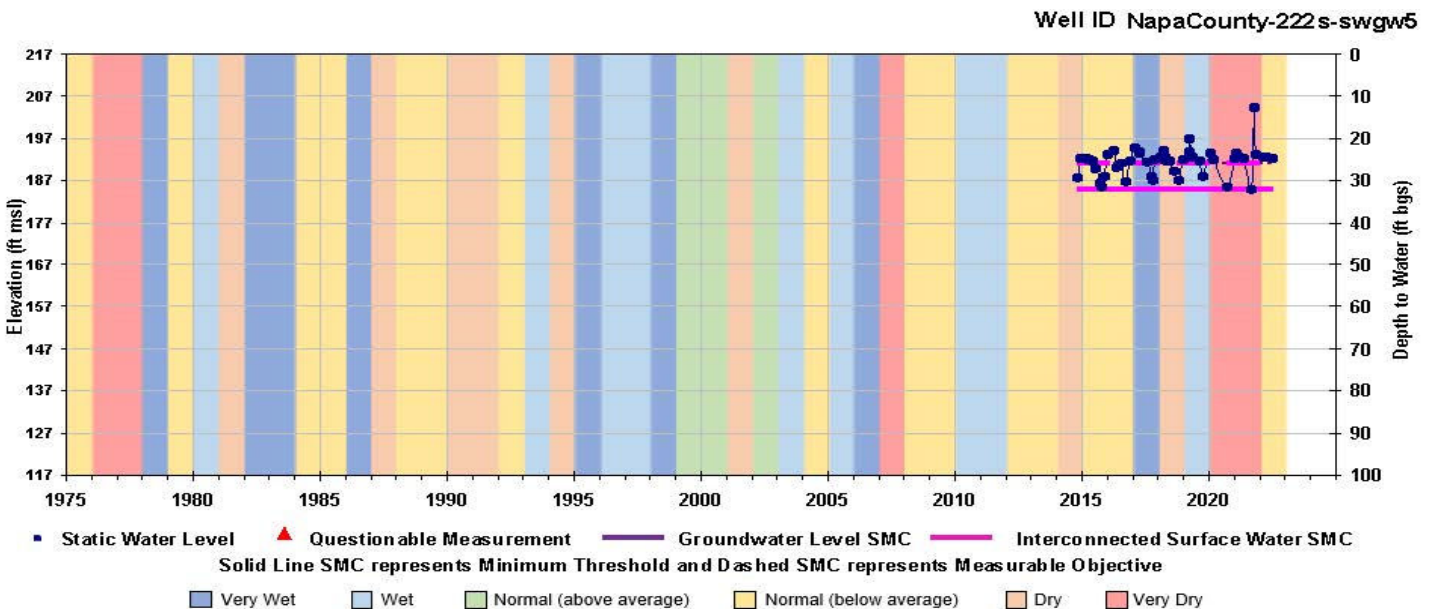
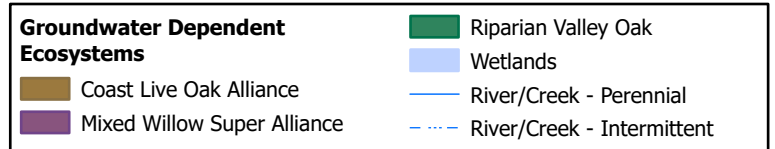
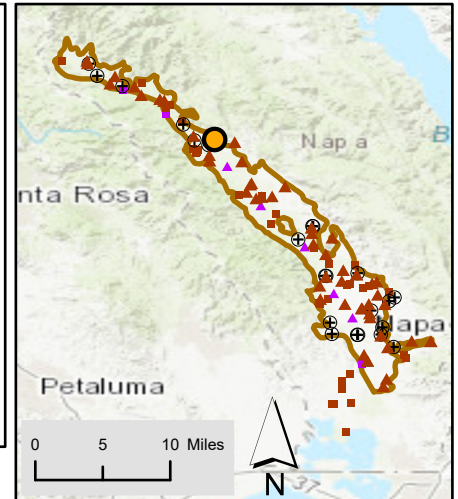
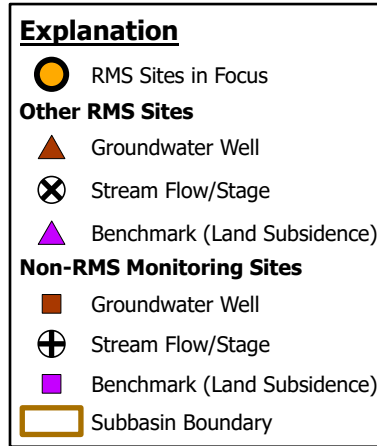
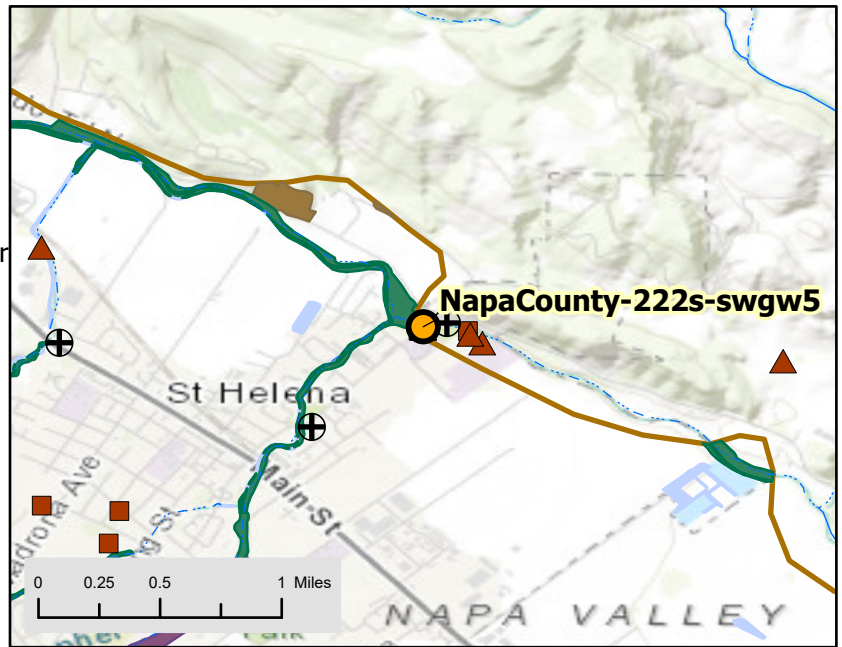
Supplemental Indicator(s)
Groundwater Quality, Groundwater Dependent Ecosystems

Well Identification
SWN: 08N05W30Q001M
MNM: 385110N1224564W001

Well Construction
Well Type: Monitoring well
Well Depth (ft bgs): 40
Top of Perforation (ft bgs): 25
Bottom of Perforation (ft bgs): 35
Well Completion Report Available? Yes

Monitoring Information
Monitoring Frequency: Daily GWL, Semi-Annual GWQ
Measurable Objectives (MO) and Minimum Thresholds (MT) (ft amsl):
GWL MO = 191.0; MT = 185.0
ISW MO = 191.0; MT = 185.0
Groundwater Level Observation
Most Recent Water Level:
Measurement Date: 7/12/2022
Depth below ground surface (ft): NA
Elevation (ft amsl): 192.16

Location Description
Latitude/Longitude: 38.510951/-122.456379
Ground Surface Elevation (ft amsl): 212.36
Distance to Perennial Stream (ft): 100
Alluvial Thickness (ft): 90



Well Name:
NapaCounty-223d-swgw5

Monitoring Network
SGMA Representative Monitoring Network

SGMA Sustainability Indicator(s)
Groundwater Levels (GWL)

Supplemental Indicator(s)
Groundwater Quality, Interconnected Surface Water, Groundwater Dependent Ecosystems

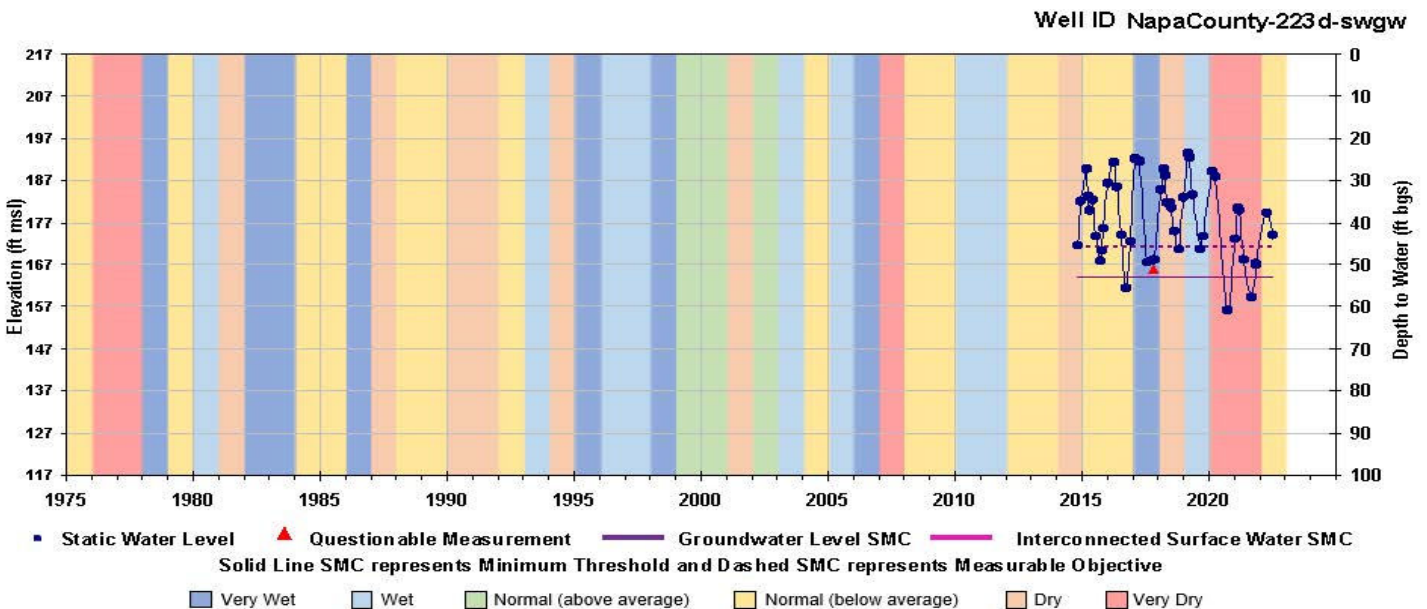
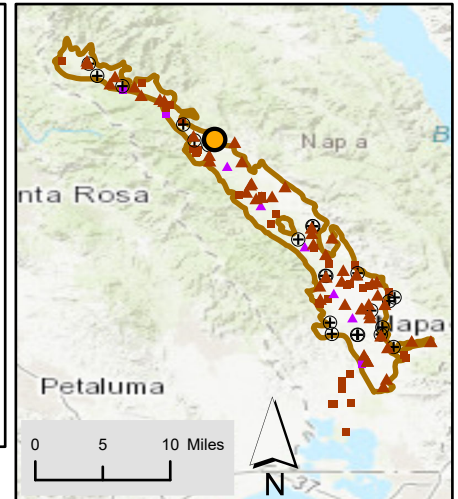
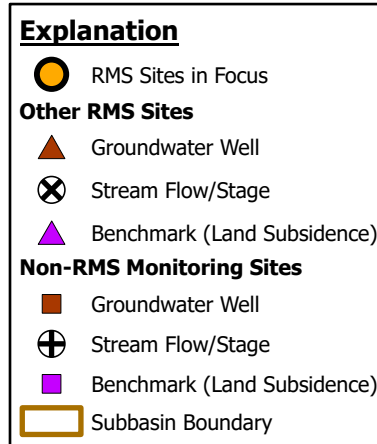
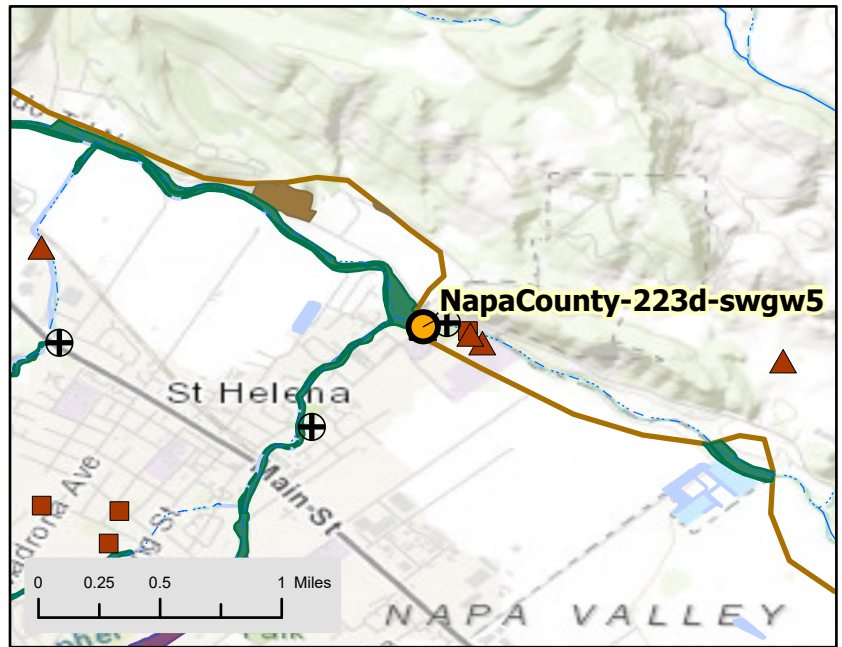
Well Identification
SWN: 08N05W30Q002M
MNM: 385110N1224564W002

Well Construction
Well Type: Monitoring well
Well Depth (ft bgs): 100
Top of Perforation (ft bgs): 80
Bottom of Perforation (ft bgs): 95
Well Completion Report Available? Yes

Monitoring Information
Monitoring Frequency: Daily GWL, Semi-Annual GWQ
Measurable Objectives (MO) and Minimum Thresholds (MT) (ft amsl):
GWL MO = 171.0; MT = 164.0

Groundwater Level Observation
Most Recent Water Level:
Measurement Date: 7/12/2022
Depth below ground surface (ft): NA
Elevation (ft amsl): 174.11

Location Description
Latitude/Longitude: 38.510951/-122.456379
Ground Surface Elevation (ft amsl): 212.36
Distance to Perennial Stream (ft): 100
Alluvial Thickness (ft): 90



Well Name:
NapaCounty-227

Monitoring Network
SGMA Representative Monitoring Network

SGMA Sustainability Indicator(s)
Groundwater Levels (GWL), Groundwater Quality (GWQ), Land Subsidence (LS)

Supplemental Indicator(s)
NA

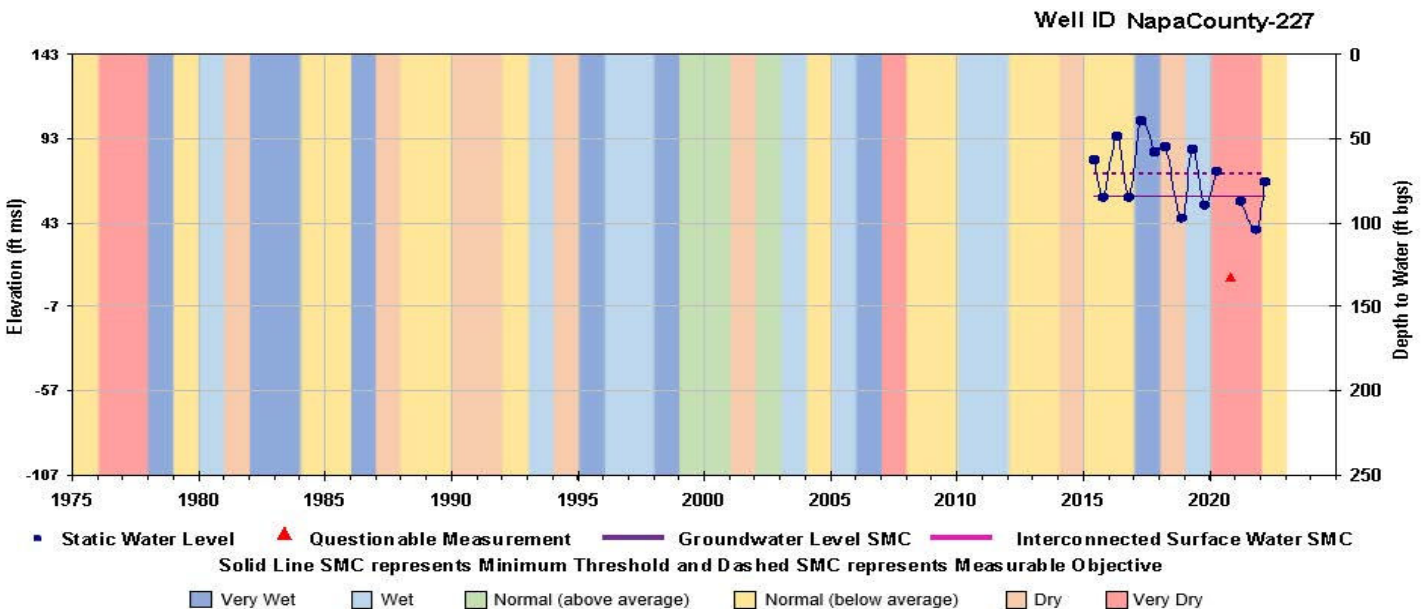
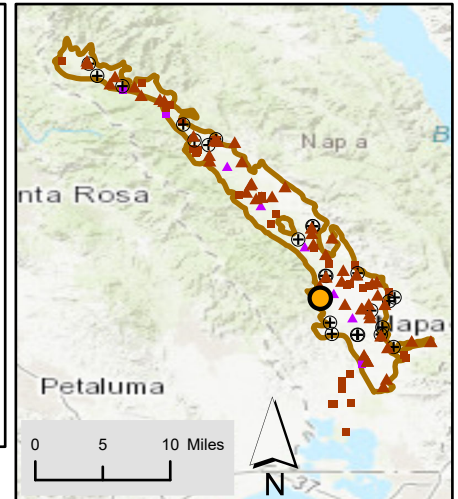
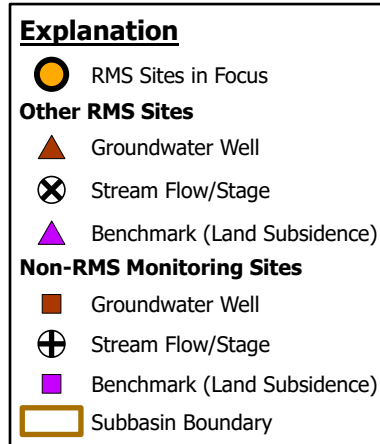
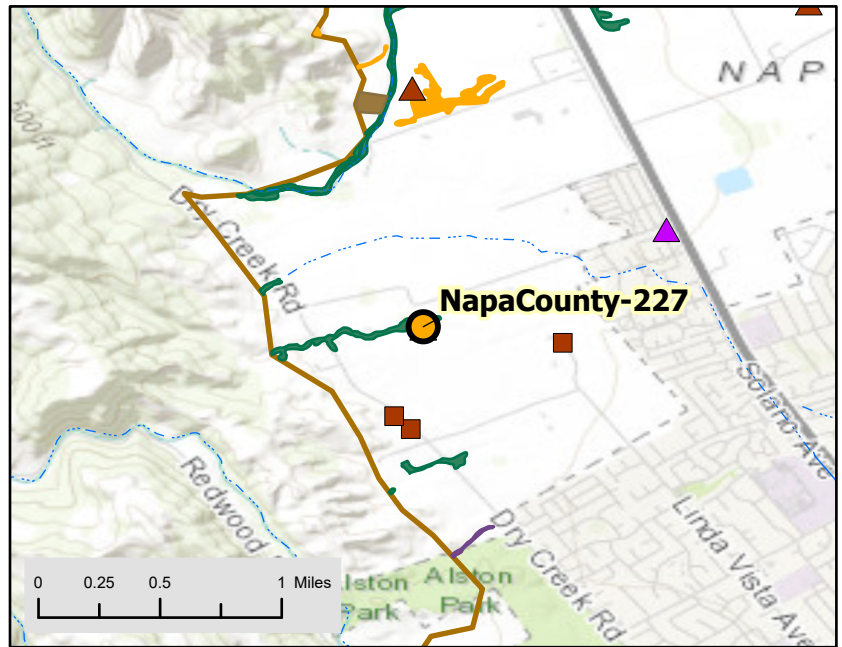
Well Identification
SWN: NA
MNM: 383411N1223434W001

Well Construction
Well Type: Domestic well
Well Depth (ft bgs): 260
Top of Perforation (ft bgs): 80
Bottom of Perforation (ft bgs): 260
Well Completion Report Available? Yes

Monitoring Information
Monitoring Frequency: Semi-Annual GWL, Semi-Annual GWQ
Measurable Objectives (MO) and Minimum Thresholds (MT) (ft amsl):
GWL MO = 72.0; MT = 59.0

Groundwater Level Observation
Most Recent Water Level:
Measurement Date: 3/8/2022
Depth below ground surface (ft): 74.89
Elevation (ft amsl): 67.11

Location Description
Latitude/Longitude: 38.341146/-122.343444
Ground Surface Elevation (ft amsl): 142.00
Distance to Perennial Stream (ft): 1,900
Alluvial Thickness (ft): 390



Well Name:
NapaCounty-229

Monitoring Network
SGMA Representative Monitoring Network

SGMA Sustainability Indicator(s)
Groundwater Levels (GWL)

Supplemental Indicator(s)
NA

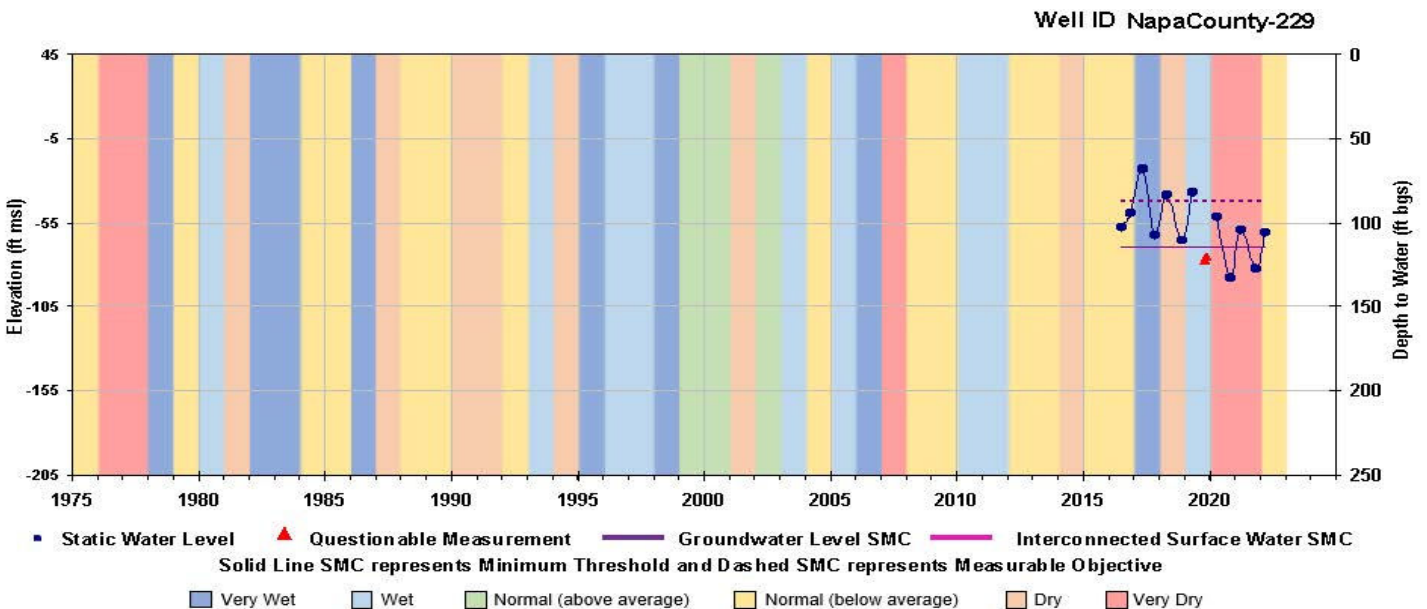
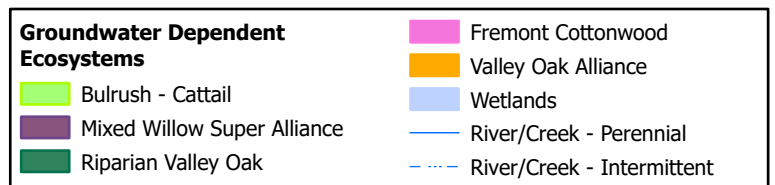
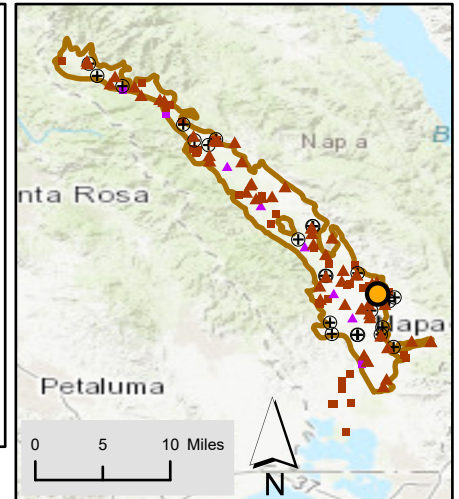
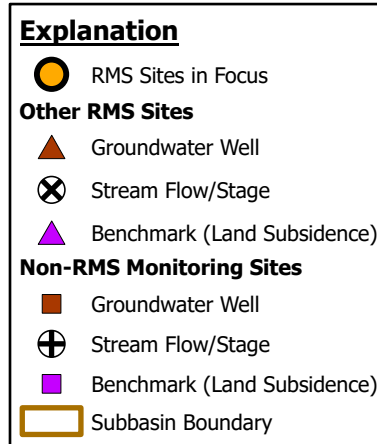
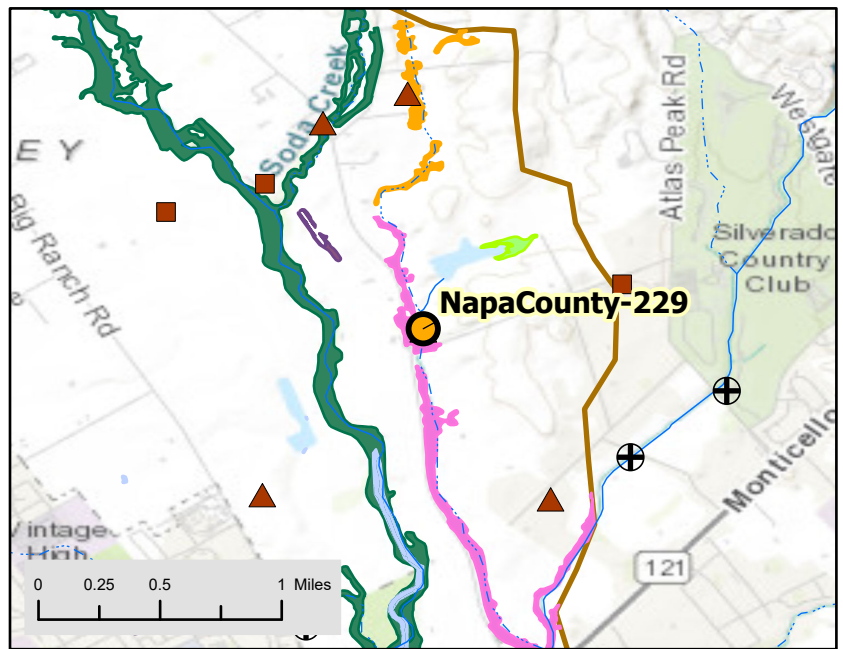
Well Identification
SWN: NA
MNM: 383457N1222820W001

Well Construction
Well Type: Domestic well
Well Depth (ft bgs): 350
Top of Perforation (ft bgs): 180
Bottom of Perforation (ft bgs): 350
Well Completion Report Available? Yes

Monitoring Information
Monitoring Frequency: Semi-Annual GWL
Measurable Objectives (MO) and Minimum Thresholds (MT) (ft amsl):
GWL MO = -42.0; MT = -69.0

Groundwater Level Observation
Most Recent Water Level:
Measurement Date: 3/2/2022
Depth below ground surface (ft): 104.40
Elevation (ft amsl): -60.63

Location Description
Latitude/Longitude: 38.345689/-122.282036
Ground Surface Elevation (ft amsl): 43.77
Distance to Perennial Stream (ft): 10
Alluvial Thickness (ft): NA



Well Name:
06N04W27L002M

Monitoring Network
SGMA Representative Monitoring Network

SGMA Sustainability Indicator(s)
Groundwater Levels (GWL), Groundwater Quality (GWQ),
Seawater Intrusion (SWI), Land Subsidence (LS)

Supplemental Indicator(s)
Interconnected Surface Water, Groundwater Dependent
Ecosystems

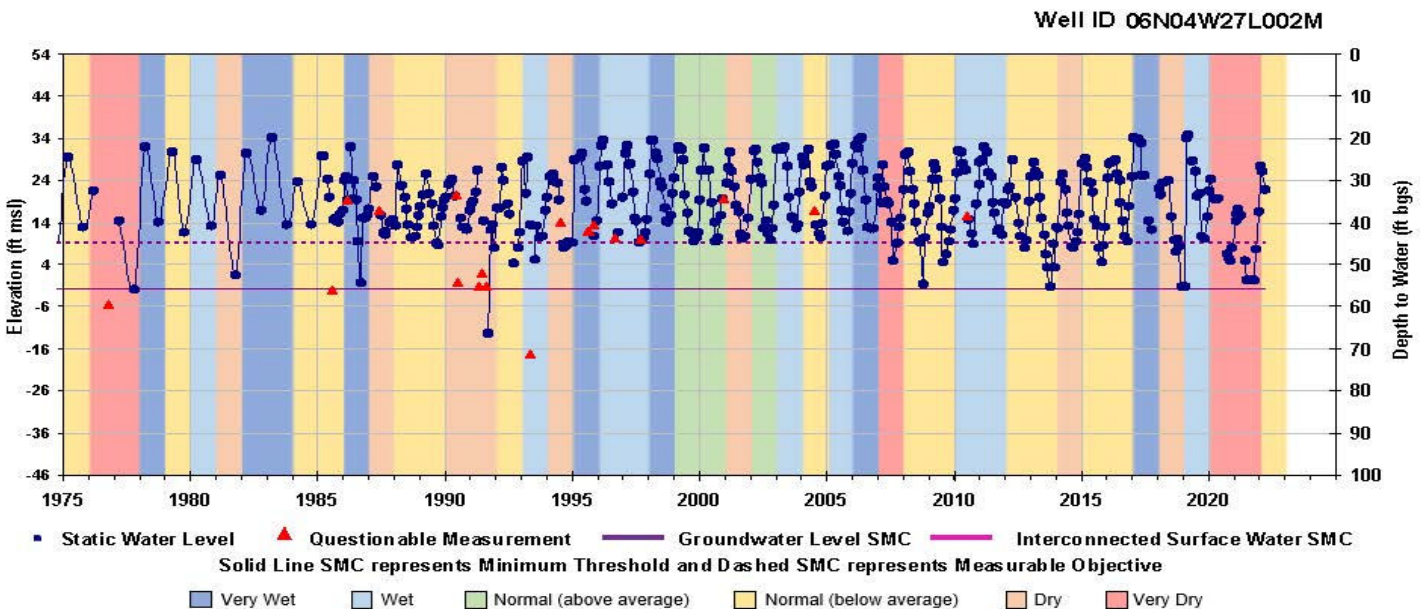
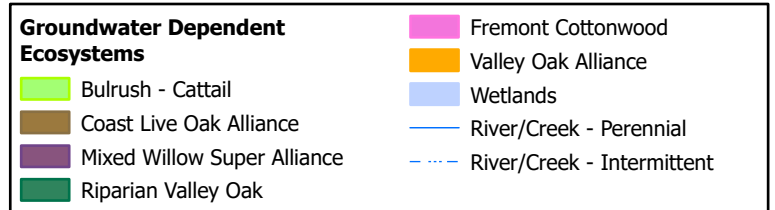
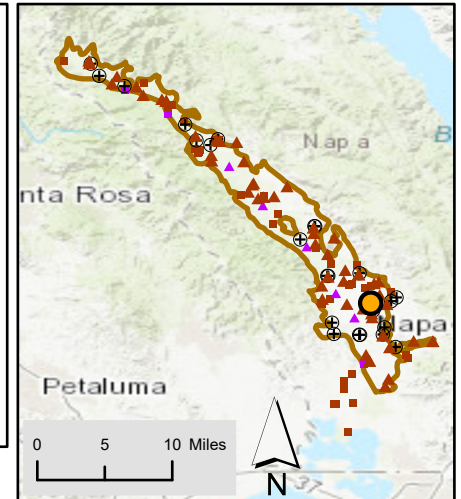
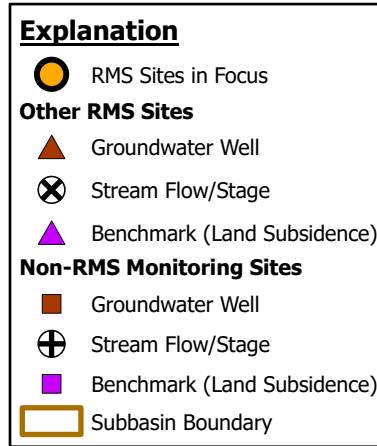
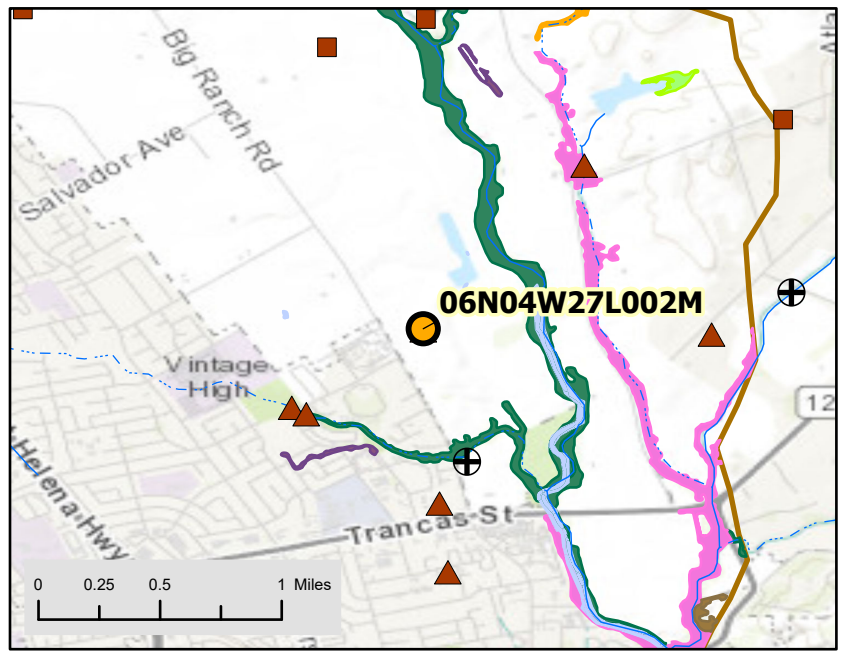
Well Identification
SWN: 006N004W27L002M
MNM: NA

Well Construction
Well Type: Domestic well
Well Depth (ft bgs): 120
Top of Perforation (ft bgs): 60
Bottom of Perforation (ft bgs): 120
Well Completion Report Available? Yes

Monitoring Information
Monitoring Frequency: Monthly GWL, Semi-Annual GWQ
(including Chloride)
Measurable Objectives (MO) and Minimum Thresholds
(MT) (ft amsl):
GWL MO = 9.0; MT = -2.0

Groundwater Level Observation
Most Recent Water Level:
Measurement Date: 3/23/2022
Depth below ground surface (ft): 30.60
Elevation (ft amsl): 22.00

Location Description
Latitude/Longitude: 38.3359/-122.2916
Ground Surface Elevation (ft amsl): 52.60
Distance to Perennial Stream (ft): 2,100
Alluvial Thickness (ft): > 400



Well Name:
NapaCounty-127

Monitoring Network
SGMA Representative Monitoring Network

SGMA Sustainability Indicator(s)
Groundwater Levels (GWL)

Supplemental Indicator(s)
NA

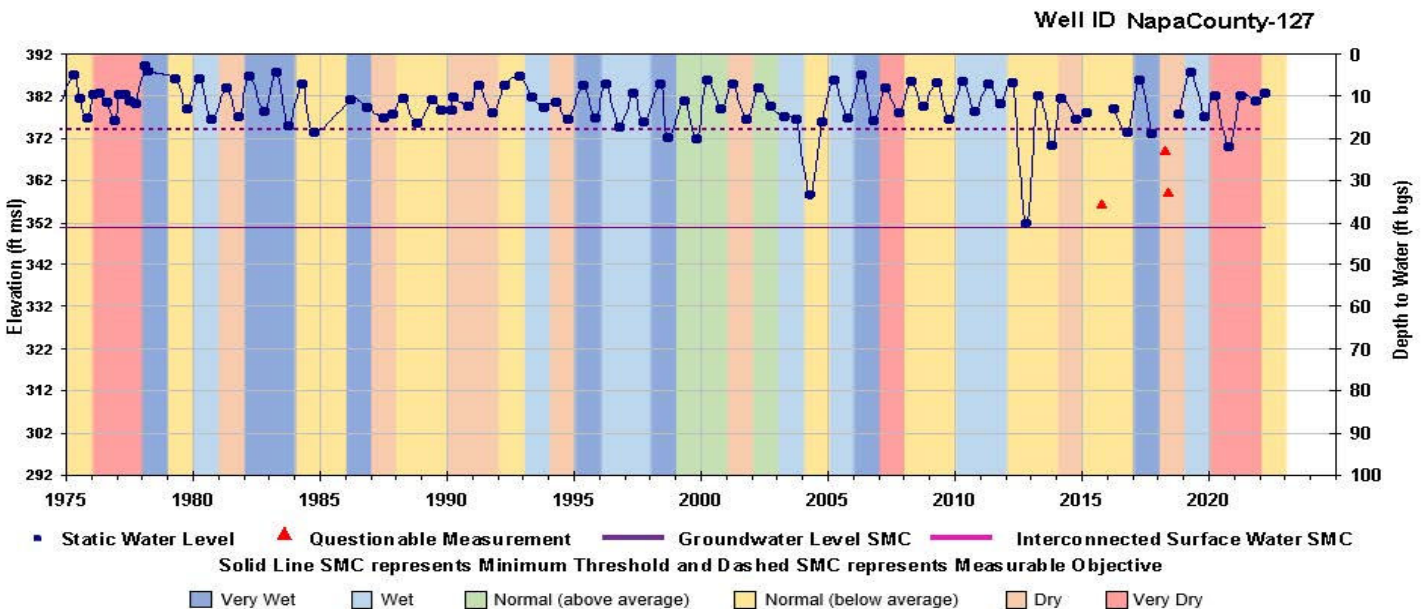
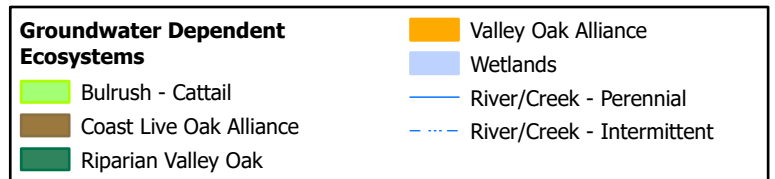
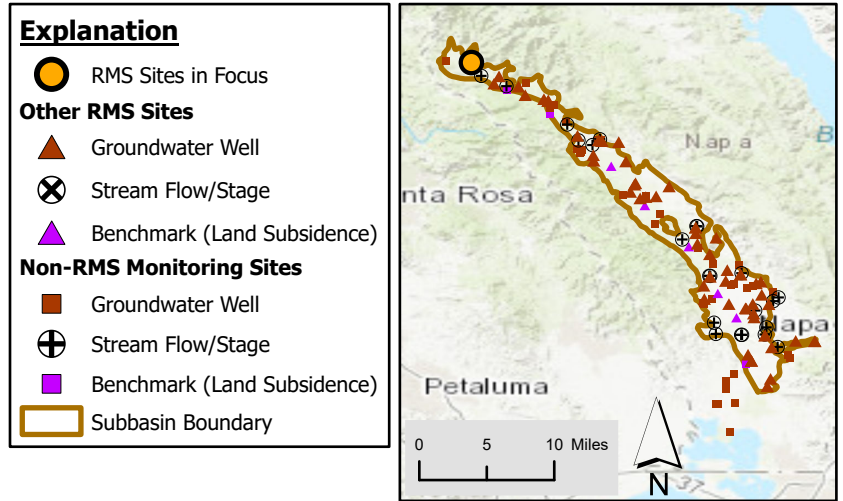
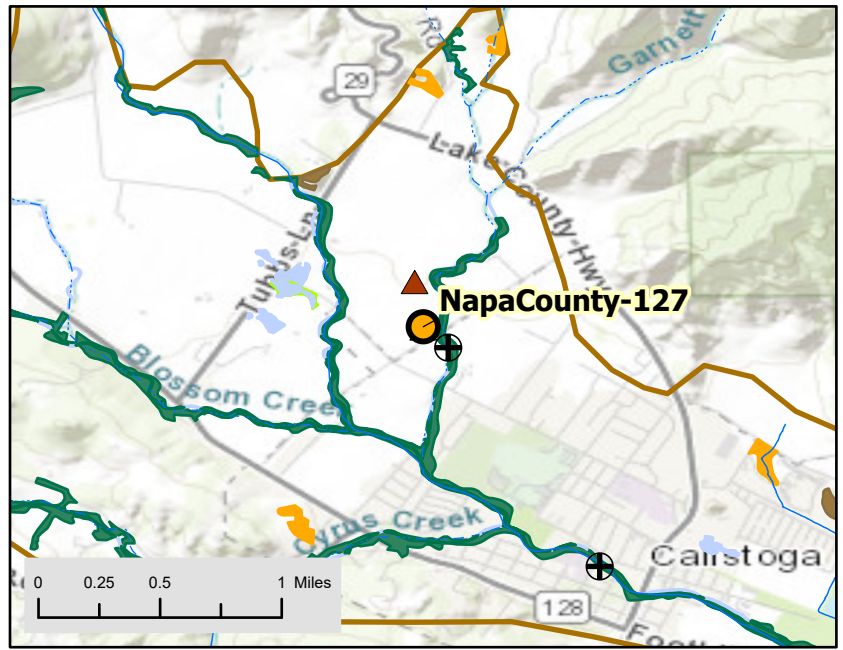
Well Identification
SWN: 009N007W25N001M
MNM: 385926N1225938W001

Well Construction
Well Type: Domestic well
Well Depth (ft bgs): 149
Top of Perforation (ft bgs): NA
Bottom of Perforation (ft bgs): NA
Well Completion Report Available? Yes

Monitoring Information
Monitoring Frequency: Semi-Annual GWL
Measurable Objectives (MO) and Minimum Thresholds (MT) (ft amsl):
GWL MO = 374.0; MT = 351.0

Groundwater Level Observation
Most Recent Water Level:
Measurement Date: 3/7/2022
Depth below ground surface (ft): 9.33
Elevation (ft amsl): 382.67

Location Description
Latitude/Longitude: 38.593241/-122.592484
Ground Surface Elevation (ft amsl): 392.00
Distance to Perennial Stream (ft): 300
Alluvial Thickness (ft): 70



Well Name:
NapaCounty-128

Monitoring Network
SGMA Representative Monitoring Network

SGMA Sustainability Indicator(s)
Groundwater Levels (GWL)

Supplemental Indicator(s)
Groundwater Quality, Land Subsidence

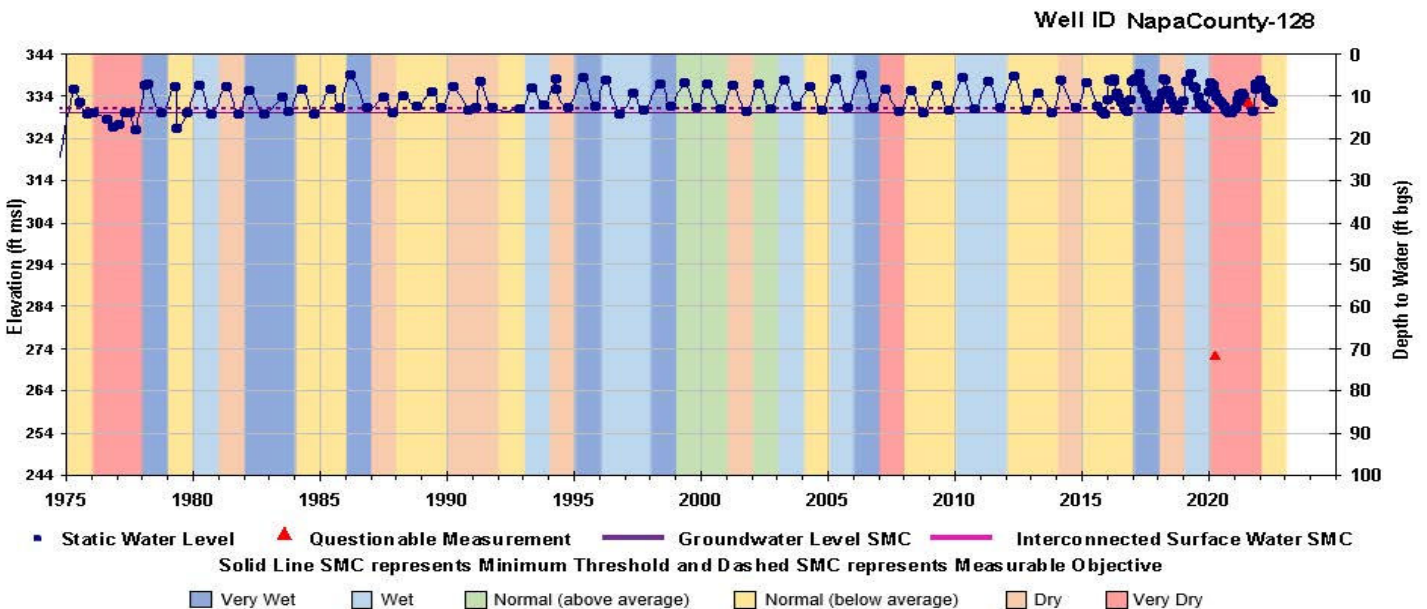
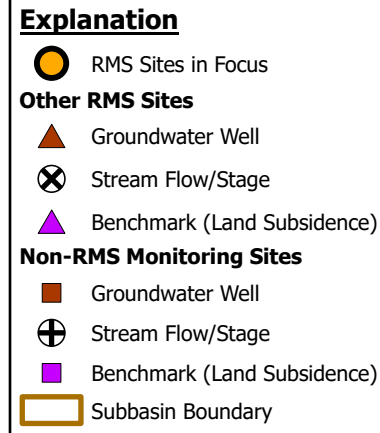
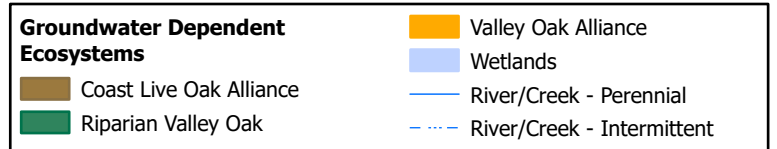
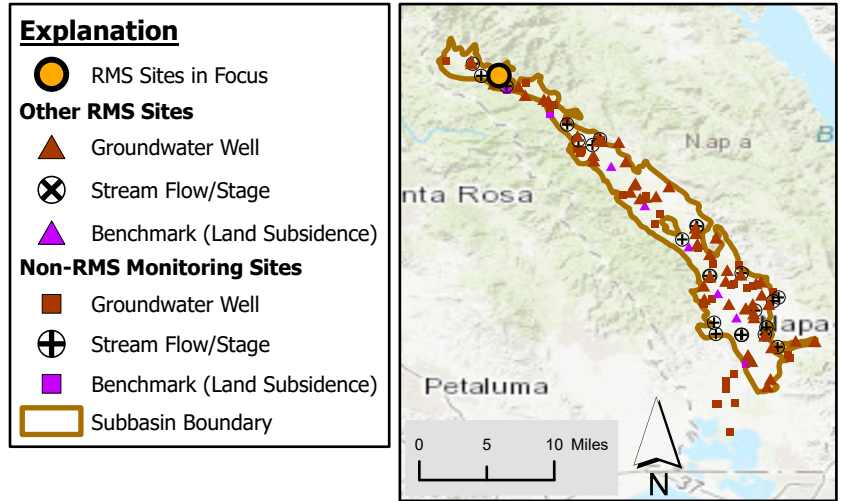
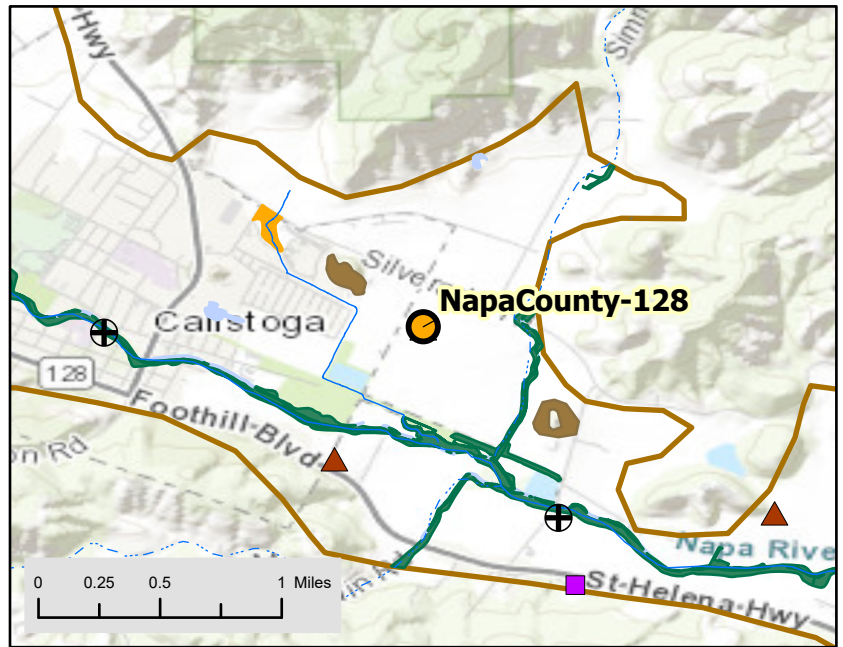
Well Identification
SWN: 009N006W31Q001M
MNM: 385791N1225636W001

Well Construction
Well Type: Unused well
Well Depth (ft bgs): 50
Top of Perforation (ft bgs): NA
Bottom of Perforation (ft bgs): NA
Well Completion Report Available? No

Monitoring Information
Monitoring Frequency: Monthly GWL
Measurable Objectives (MO) and Minimum Thresholds (MT) (ft amsl):
GWL MO = 331.0; MT = 330.0

Groundwater Level Observation
Most Recent Water Level:
Measurement Date: 6/22/2022
Depth below ground surface (ft): 10.40
Elevation (ft amsl): 332.60

Location Description
Latitude/Longitude: 38.579352/-122.563038
Ground Surface Elevation (ft amsl): 343.00
Distance to Perennial Stream (ft): 1,200
Alluvial Thickness (ft): 70



**Well Name:
NapaCounty-177**

Monitoring Network

SGMA Representative Monitoring Network

SGMA Sustainability Indicator(s)

Groundwater Levels (GWL)

Supplemental Indicator(s)

NA

Well Identification

SWN: NA

MNM: 384487N1224120W001

Well Construction

Well Type: Unused well

Well Depth (ft bgs): 123

Top of Perforation (ft bgs): 30

Bottom of Perforation (ft bgs): 122

Well Completion Report Available? Yes

Monitoring Information

Monitoring Frequency: Semi-Annual GWL

Measurable Objectives (MO) and Minimum Thresholds (MT) (ft amsl):

GWL MO = 136.0; MT = 131.0

Groundwater Level Observation

Most Recent Water Level:

Measurement Date: 3/7/2022

Depth below ground surface (ft): 8.31

Elevation (ft amsl): 139.69

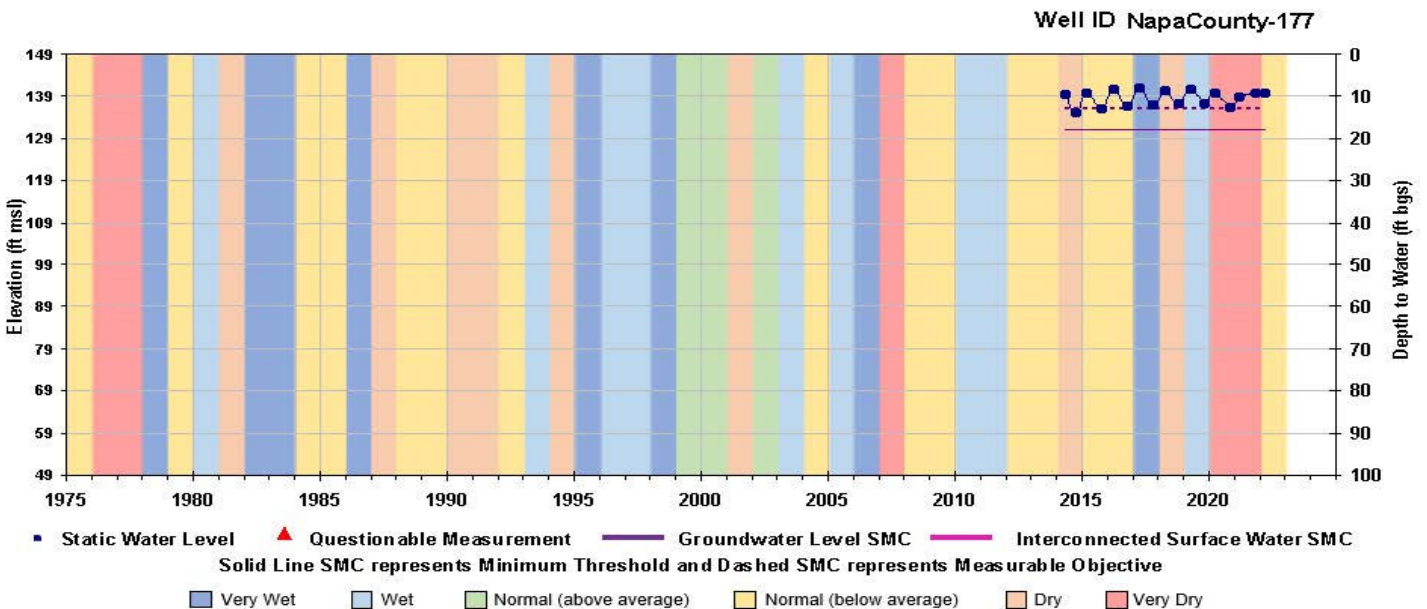
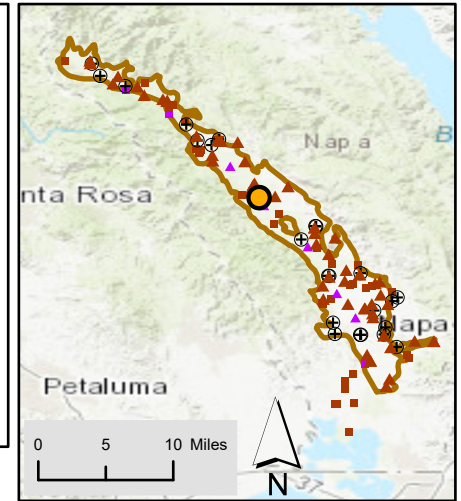
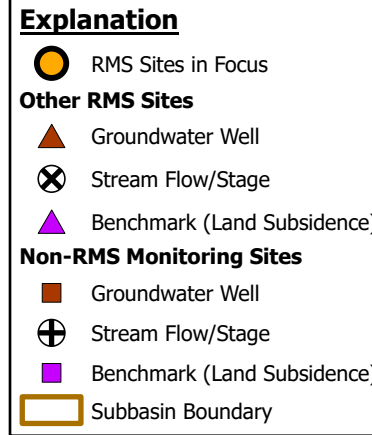
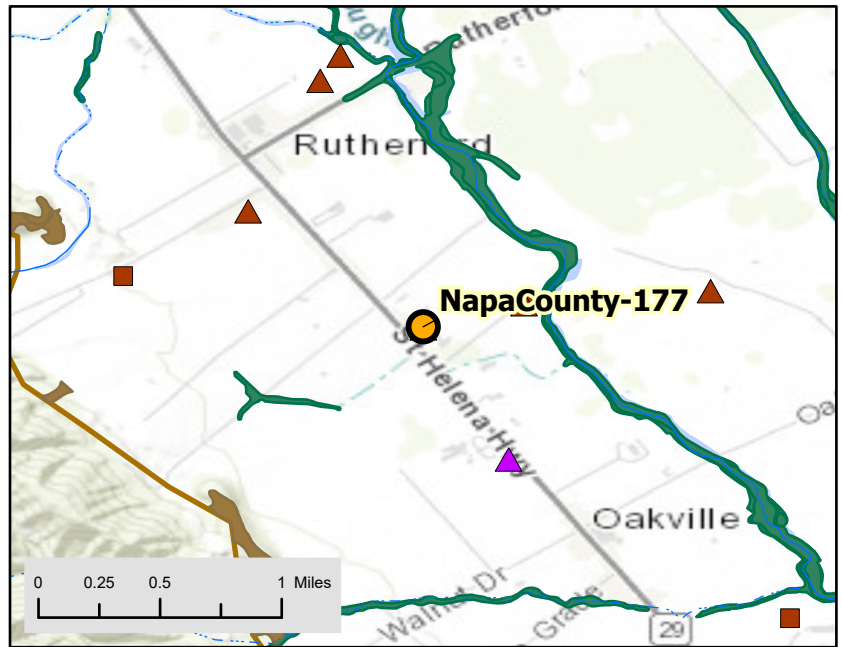
Location Description

Latitude/Longitude: 38.44879/-122.412071

Ground Surface Elevation (ft amsl): 148.00

Distance to Perennial Stream (ft): 2,100

Alluvial Thickness (ft): 150



Well Name:
NapaCounty-214s-swgw1

Monitoring Network
SGMA Representative Monitoring Network

SGMA Sustainability Indicator(s)
Groundwater Levels (GWL), Seawater Intrusion (SWI),
Interconnected Surface Water (ISW)

Supplemental Indicator(s)
Groundwater Quality, Groundwater Dependent
Ecosystems

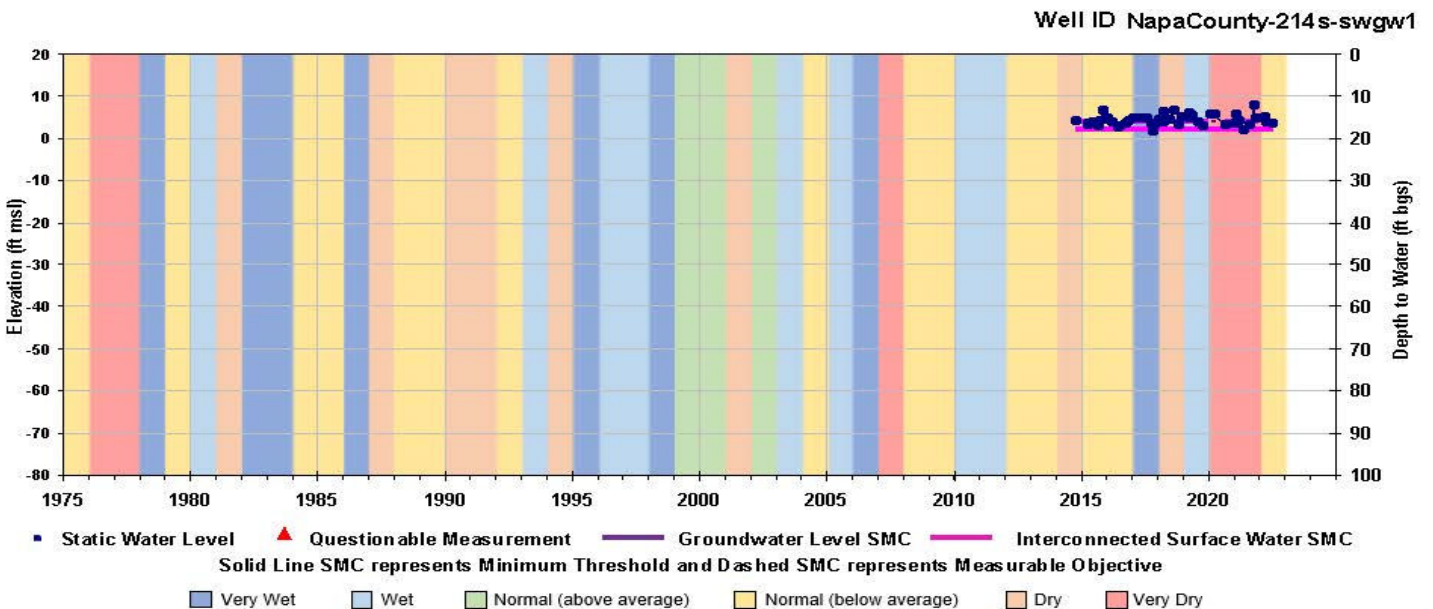
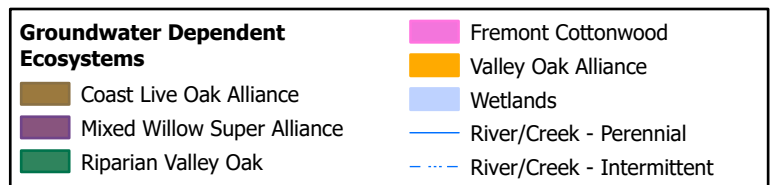
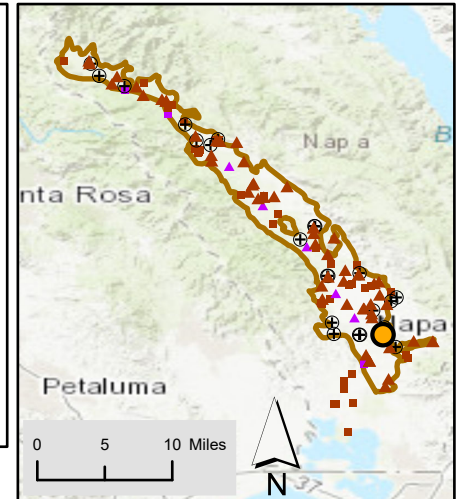
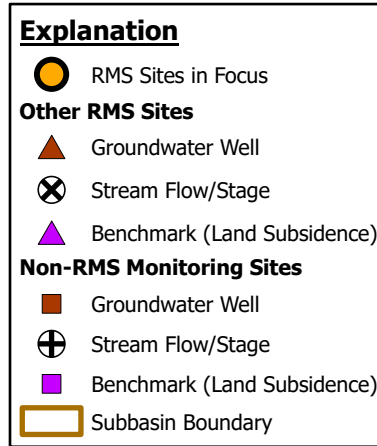
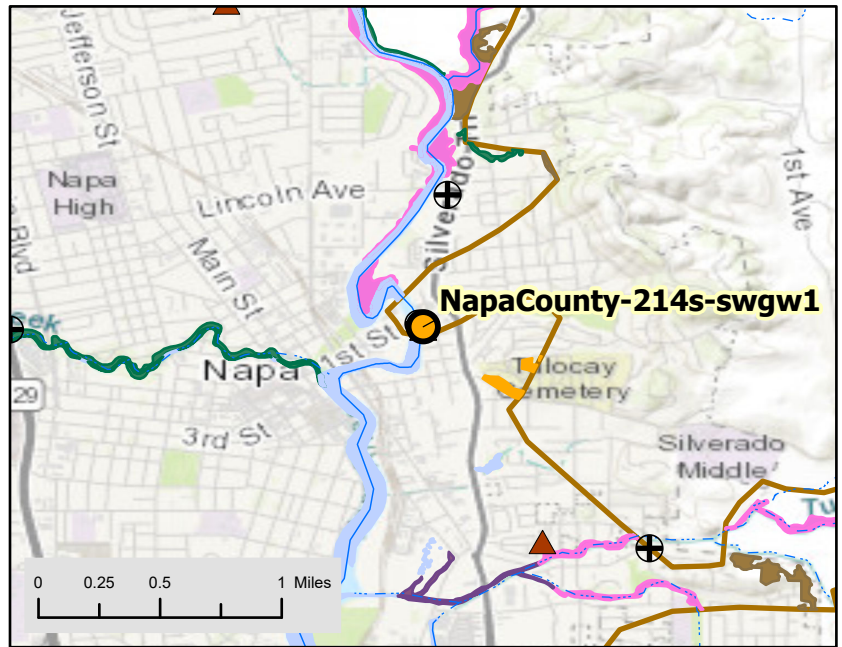
Well Identification
SWN: 05N04W02N002M
MNM: 383022N1222784W001

Well Construction
Well Type: Monitoring well
Well Depth (ft bgs): 53
Top of Perforation (ft bgs): 30
Bottom of Perforation (ft bgs): 50
Well Completion Report Available? Yes

Monitoring Information
Monitoring Frequency: Daily GWL, Semi-Annual GWQ
Measurable Objectives (MO) and Minimum Thresholds
(MT) (ft amsl):
GWL MO = 4.0; MT = 2.0
ISW MO = 4.0; MT = 2.0

Groundwater Level Observation
Most Recent Water Level:
Measurement Date: 7/12/2022
Depth below ground surface (ft): NA
Elevation (ft amsl): 5.72

Location Description
Latitude/Longitude: 38.302163/-122.278444
Ground Surface Elevation (ft amsl): 18.58
Distance to Perennial Stream (ft): 70
Alluvial Thickness (ft): 210



Well Name:
NapaCounty-215d-swgw1

Monitoring Network

SGMA Representative Monitoring Network

SGMA Sustainability Indicator(s)

Groundwater Levels (GWL), Seawater Intrusion (SWI)

Supplemental Indicator(s)

Groundwater Quality, Interconnected Surface Water, Groundwater Dependent Ecosystems

Well Identification

SWN: 05N04W02N001M
MNM: 383022N1222784W002

Well Construction

Well Type: Monitoring well
Well Depth (ft bgs): 98
Top of Perforation (ft bgs): 75
Bottom of Perforation (ft bgs): 95
Well Completion Report Available? Yes

Monitoring Information

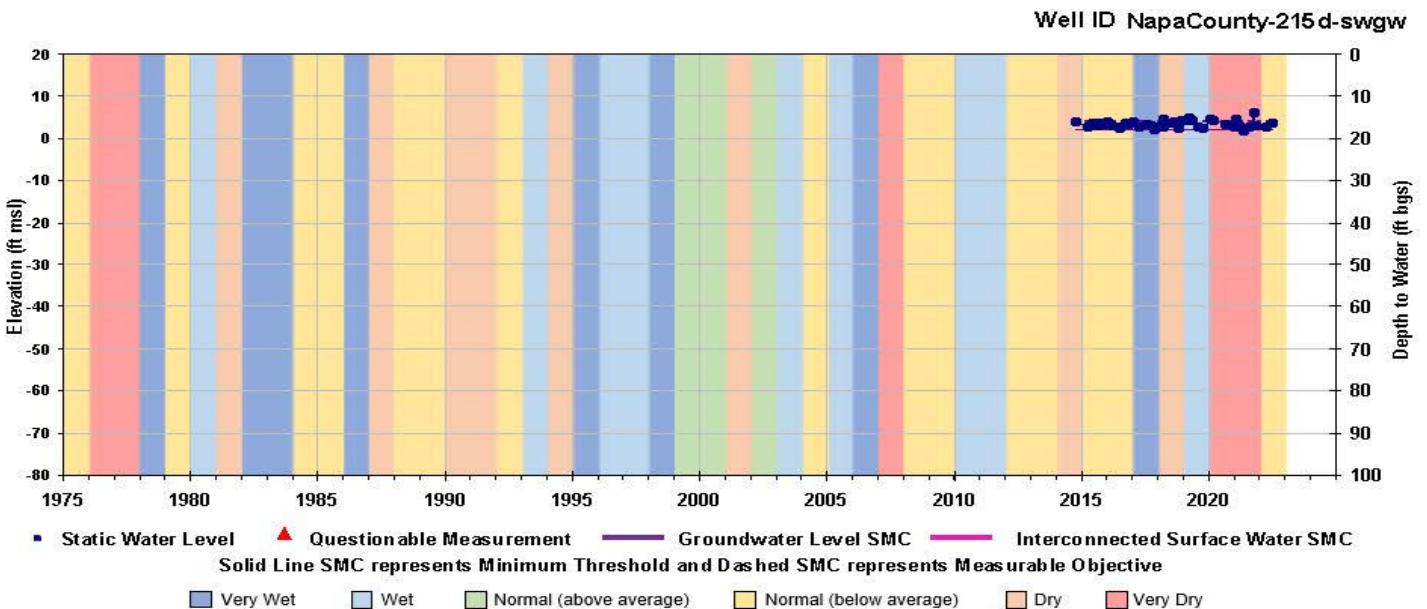
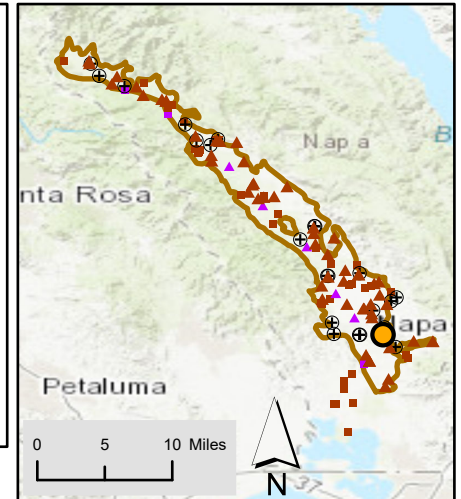
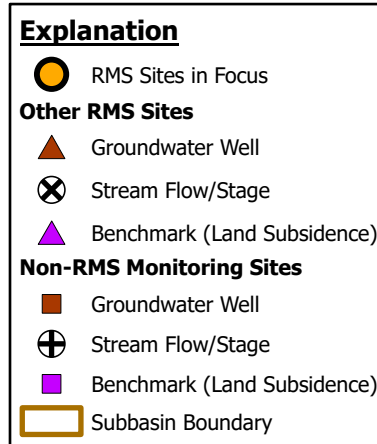
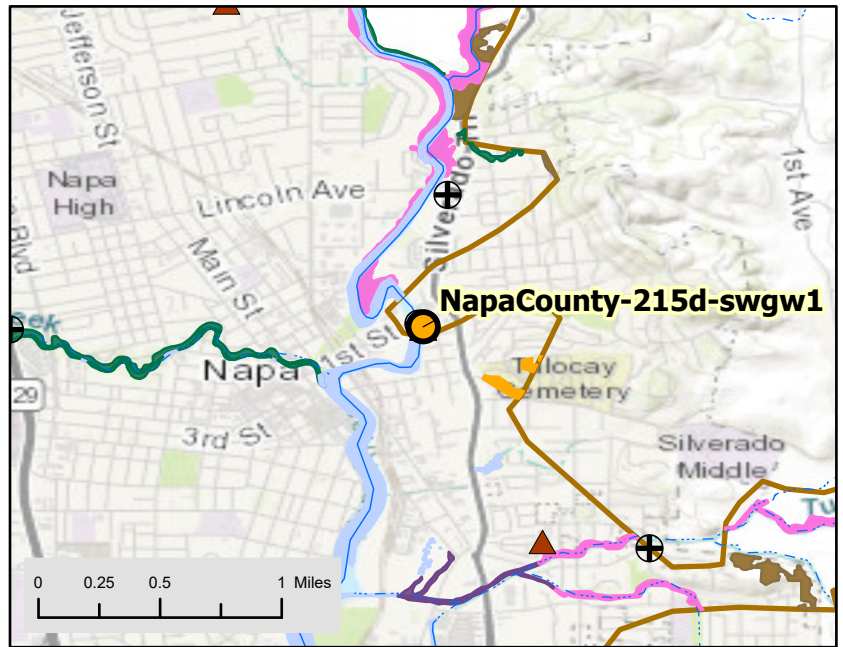
Monitoring Frequency: Daily GWL, Semi-Annual GWQ
Measurable Objectives (MO) and Minimum Thresholds (MT) (ft amsl):
GWL MO = 4.0; MT = 2.0

Groundwater Level Observation

Most Recent Water Level:
Measurement Date: 7/12/2022
Depth below ground surface (ft): NA
Elevation (ft amsl): 3.49

Location Description

Latitude/Longitude: 38.302163/-122.278444
Ground Surface Elevation (ft amsl): 18.58
Distance to Perennial Stream (ft): 70
Alluvial Thickness (ft): 210



Well Name:
NapaCounty-22

Monitoring Network
SGMA Representative Monitoring Network

SGMA Sustainability Indicator(s)
Groundwater Levels (GWL)

Supplemental Indicator(s)
Groundwater Dependent Ecosystems

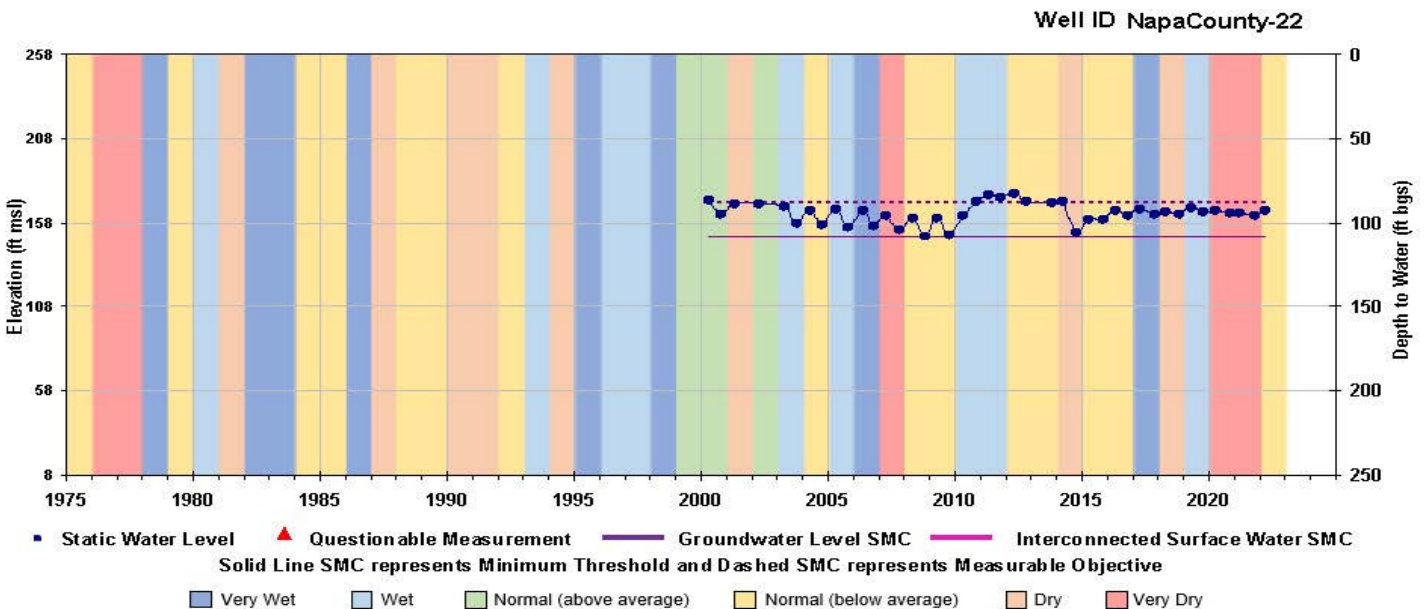
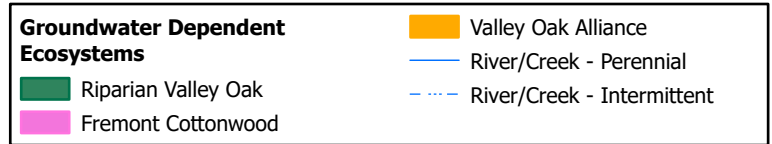
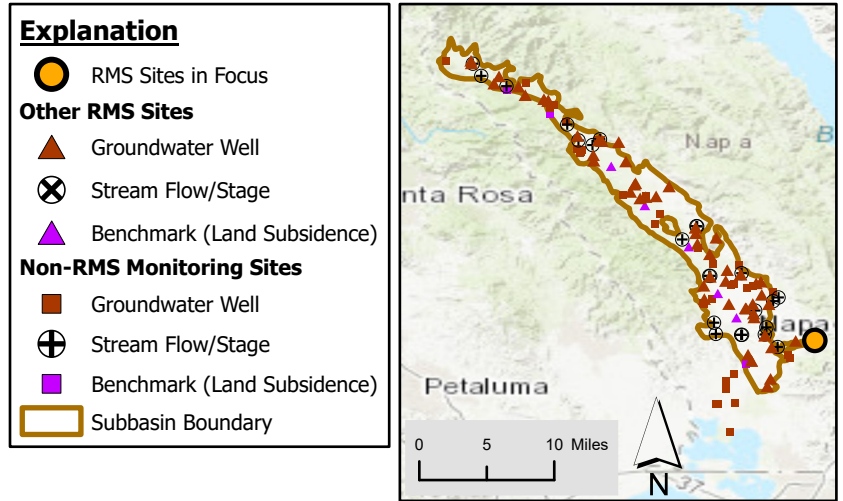
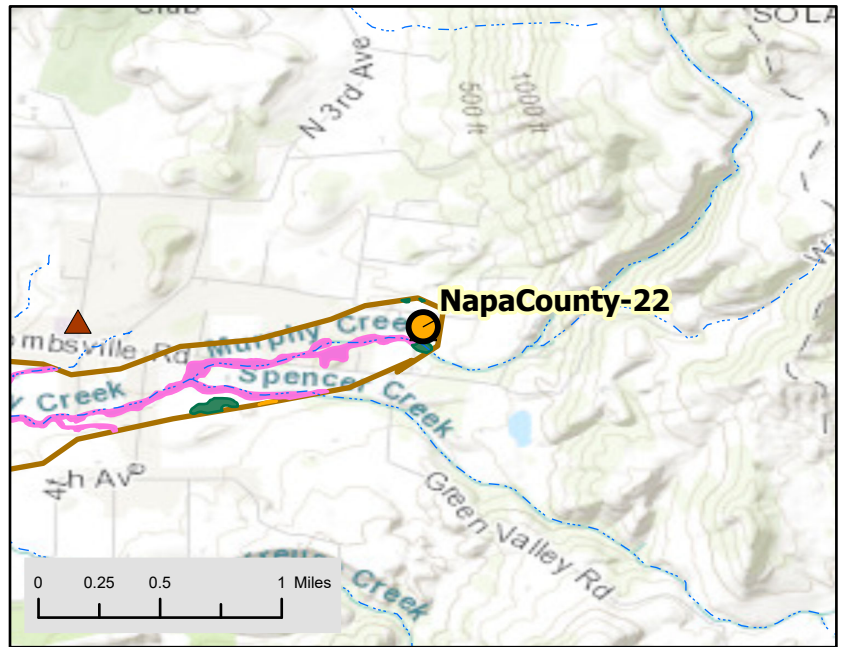
Well Identification
SWN: 005N003W08E001M
MNM: 382960N1222252W002

Well Construction
Well Type: Domestic well
Well Depth (ft bgs): 135
Top of Perforation (ft bgs): NA
Bottom of Perforation (ft bgs): NA
Well Completion Report Available? No

Monitoring Information
Monitoring Frequency: Semi-Annual GWL
Measurable Objectives (MO) and Minimum Thresholds (MT) (ft amsl):
GWL MO = 170.0; MT = 150.0

Groundwater Level Observation
Most Recent Water Level:
Measurement Date: 3/8/2022
Depth below ground surface (ft): 91.96
Elevation (ft amsl): 165.34

Location Description
Latitude/Longitude: 38.296038/-122.225197
Ground Surface Elevation (ft amsl): 257.30
Distance to Perennial Stream (ft): 300
Alluvial Thickness (ft): NA



Well Name:
NapaCounty-76

Monitoring Network
SGMA Representative Monitoring Network

SGMA Sustainability Indicator(s)
Groundwater Levels (GWL)

Supplemental Indicator(s)
NA

Well Identification
SWN: 006N004W15R003M
MNM: 383597N1222829W001

Well Construction
Well Type: Domestic well
Well Depth (ft bgs): 395
Top of Perforation (ft bgs): 60
Bottom of Perforation (ft bgs): 395
Well Completion Report Available? Yes

Monitoring Information
Monitoring Frequency: Semi-Annual GWL
Measurable Objectives (MO) and Minimum Thresholds (MT) (ft amsl):
GWL MO = -15.0; MT = -29.0

Groundwater Level Observation
Most Recent Water Level:
Measurement Date: 3/8/2022
Depth below ground surface (ft): 84.25
Elevation (ft amsl): 12.25

Location Description
Latitude/Longitude: 38.359748/-122.282972
Ground Surface Elevation (ft amsl): 96.50
Distance to Perennial Stream (ft): 200
Alluvial Thickness (ft): NA

